

PALM▲**TECH**

home inspection software

V E R S I O N 9

HOW TO:

Make a Narrative Style Report

This step by step How To article explains how to make a Narrative style report.

For a complete list of available How To documents, visit the Support section of our website: www.palm-tech.com/support/

HOW TO: Make a Narrative Style Report

You can customize the way the reports you create look with various settings in Report Settings. By default, the out of the box settings create a checklist style report, but you can easily switch it to be narrative.

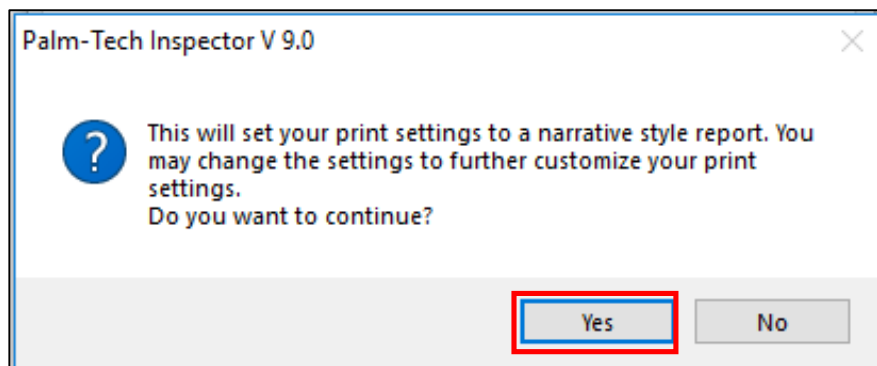
1. The first step is to click on the Report Settings icon from the Toolbar at the top of an open inspection report on the PC Version of Palm-Tech.



2. This will bring up the Report Options window and the 'Margins' tab. At the bottom of this tab, you have an option for 'Default Report Style'. To create a narrative style report, click on 'Narrative'.

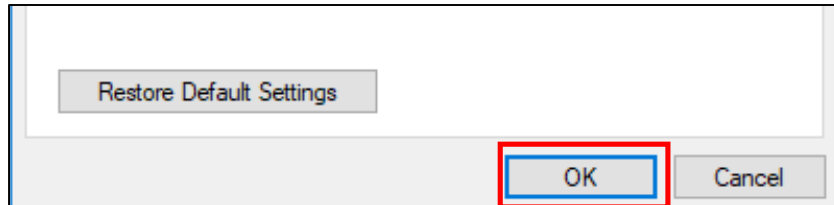


3. When you do this, the message below appears. Click on 'Yes' to switch to a narrative style report.



HOW TO: Make a Narrative Style Report

- The program has automatically changed the necessary Report Settings to switch the format to a narrative style report. You can now make any other desired changes to the Report Settings. When finished click on 'OK'.



- You have now switched to a narrative style report.