

PALM▲**TECH**

home inspection software

V E R S I O N 9

HOW TO:

Delete Components

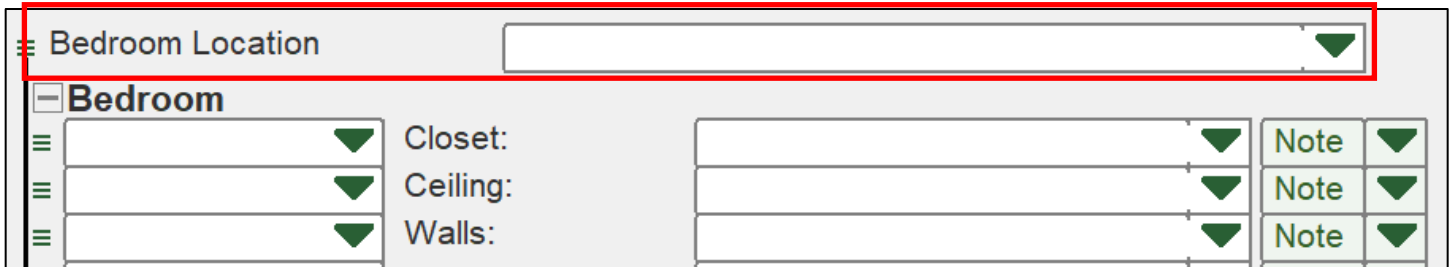
This step by step How To article explains how to delete components in your inspections

For a complete list of available How To documents, visit the Support section of our website: www.palm-tech.com/support/

HOW TO: Delete Components

Components are a series of lines that are grouped together. Examples of components are bedrooms and bathrooms.

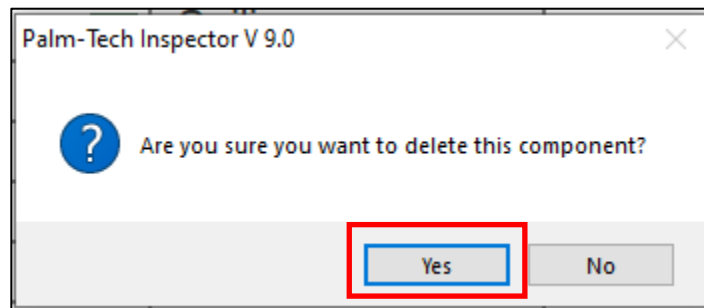
1. The first step is to right click on the location line for the component you want to delete.



2. Next, click on 'Delete Component'.



3. A message will appear asking if you are sure you want to delete the component. Click on 'Yes' to continue.



4. The component will now be removed from the inspection.