

PALM  **TECH**

home inspection software

V E R S I O N 9

HOW TO:

Enable the Entry of Cost Estimates

This step by step How To article will show you what setting to change to enable the entry of cost estimates

For a complete list of available How To documents, visit the Support section of our website: www.palm-tech.com/support/

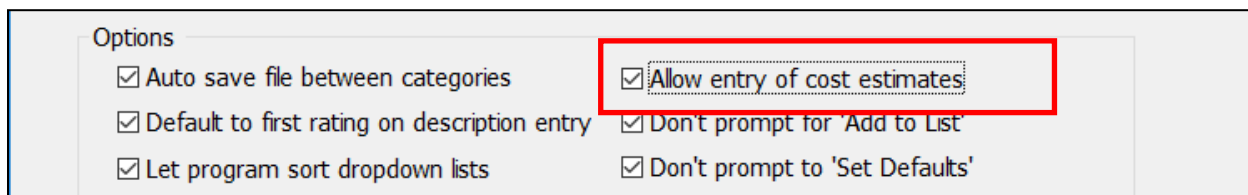
HOW TO: Enable the Entry of Cost Estimates

In order to be able to enter cost estimates you must first make sure you have the option selected in Program Settings to 'Allow Entry of Cost Estimates'.

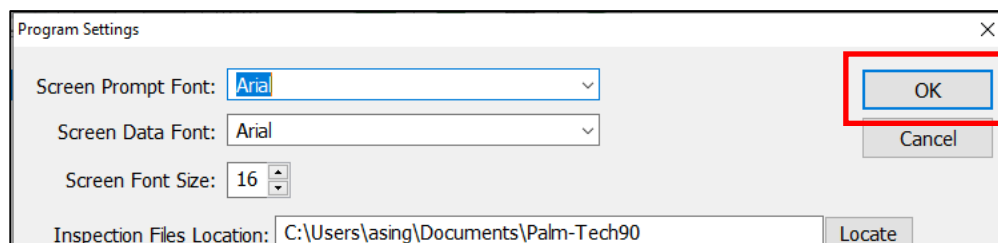
1. The first step is to click on the Program Settings icon from the Toolbar.



2. The Program Settings window will now appear.
3. Next, you need to check the option for 'Allow entry of cost estimates'



4. Next, click on 'OK'.



5. Cost Estimates are now enabled and you will see cost estimate buttons at the end of each line.

☰	▼	Driveway:	▼	Note	▼	\$
☰	▼	Walks:	▼	Note	▼	\$
☰	▼	Steps/Stoops:	▼	Note	▼	\$
☰	▼	Porch:	▼	Note	▼	\$