

PALM  **TECH**

home inspection software

V E R S I O N 9

HOW TO:

Send an Inspection from the App to the PC

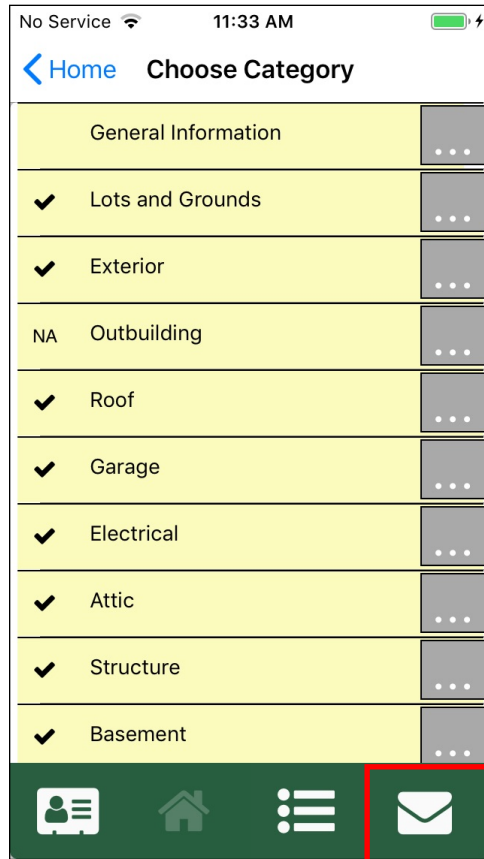
This step by step How To article explains how to move an inspection file from the app to a PC.

For a complete list of available How To documents, visit the Support section of our website: www.palm-tech.com/support/

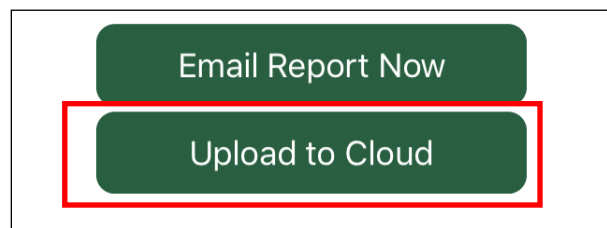
HOW TO: Send an Inspection from the App to the PC

After finishing an inspection on the app you can move it over to the PC to deliver (if you didn't email it to the client from the app) or for storage.

1. With your inspection open, tap the 'Email' view.

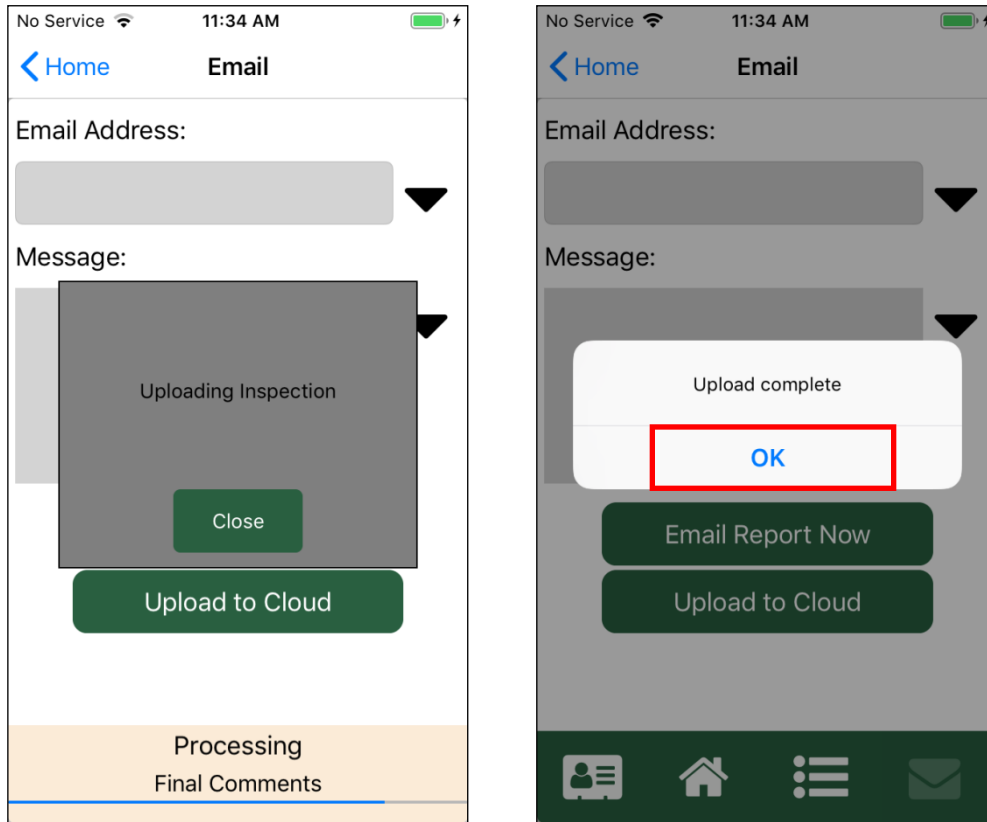


2. Next, tap 'Upload to Cloud'



HOW TO: Send an Inspection from the App to the PC

3. A window will appear that says 'Uploading Inspection'. Wait until you see the 'Upload Complete' message and tap 'OK'.



4. The inspection has now been uploaded and you are ready to download it on your PC. To do this, open the Palm-Tech program on your PC by double-clicking the icon.



HOW TO: Send an Inspection from the App to the PC

5. On the screen that appears you'll see a list of your 'Recent Cloud Inspections'. If you want to open the inspection file you uploaded then click on it to highlight it, and click 'Open'.

