

PALM  **TECH**

home inspection software

V E R S I O N 9

HOW TO:

Reset the Inspection Files Location

This step by step How To article explains how to reset the inspection files location to the default location.

For a complete list of available How To documents, visit the Support section of our website: www.palm-tech.com/support/

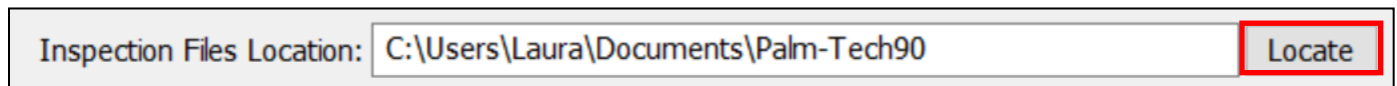
HOW TO: Reset the Inspection Files Location

Palm-Tech automatically saves your inspection files and PDFs by default in the Palm-Tech90 folder which is located in C:\Documents\Palm-Tech90. This guide will walk you through resetting the inspection files location back to the default location.

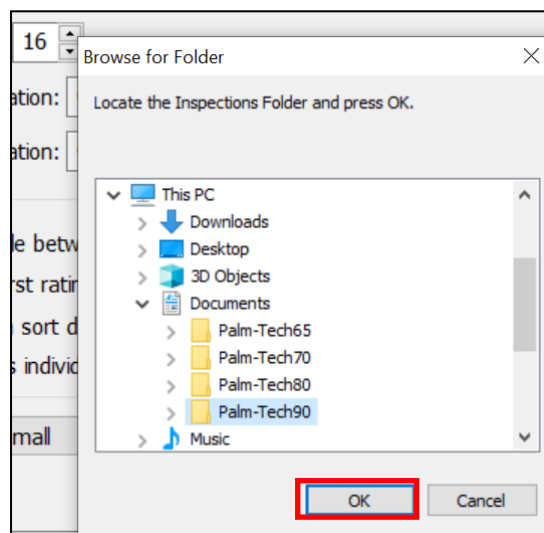
1. The first step is to click on the Program Settings icon from the toolbar.



2. Next, the Program Settings window will appear.
3. Next, you will have an option for 'Inspection Files Location' and it will show what the current inspection files location is set to. To the right, click on the 'Locate' button to change the inspection files location.



4. Now, simply navigate to the C:\Documents\Palm-Tech90 folder and click OK.



5. Your inspection files location has now been reset to the default location.

