



Palm-Tech
HOME INSPECTION SOFTWARE

Step by Step

How To

**Change the Inspection
Files Location**

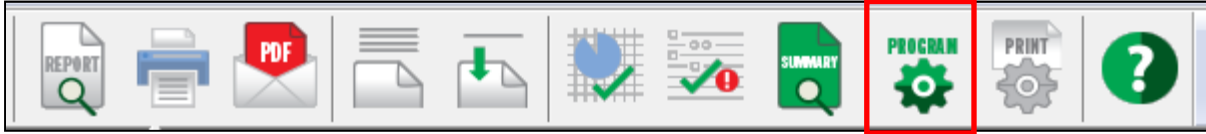
*This How To article explains how to change
the inspection files location*

For a complete list of available How To documents visit the
Support section of our website: www.palm-tech.com/support/

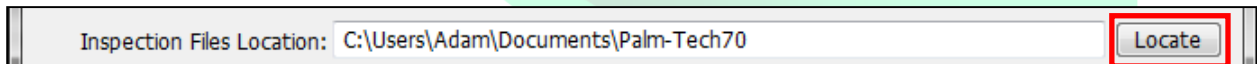
HOW TO: CHANGE THE INSPECTION FILES LOCATION

When you save inspection files in Palm-Tech the default location for your inspection files is C:\Documents\Palm-Tech70. You can change this to a different folder of your choosing.

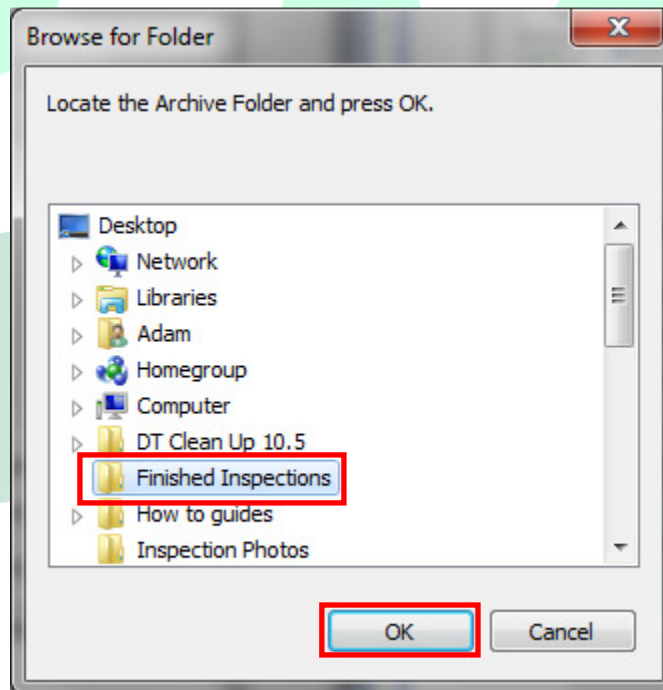
1. The first step is to click on the Program Settings icon from the Toolbar.



2. The Program Settings window will now appear.
3. Next, locate where it says 'Inspection Files Location' in the middle of the screen. Here you will see what the inspection files location is currently set to. On the right of the line there a 'Locate' button. To change the location click on 'Locate'.



4. On the next screen you can navigate to the folder you want to make the new file location. Click on the folder to highlight it and then click on 'OK'.



5. You have now changed the inspection files location.

