



Palm-Tech
HOME INSPECTION SOFTWARE

Step by Step

How To

Delete Templates

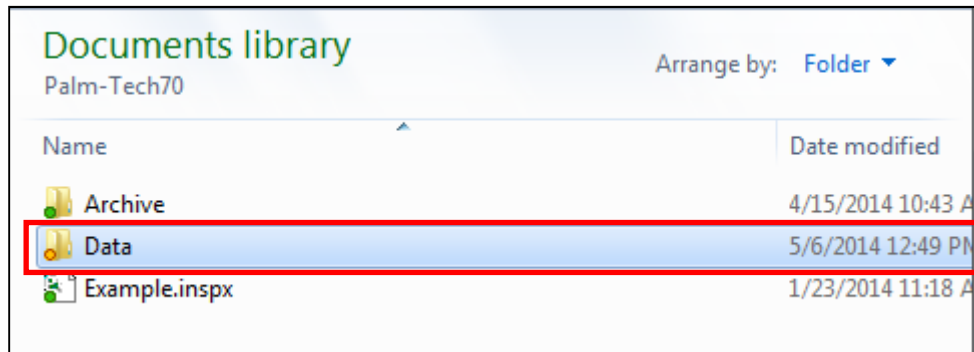
This How To article explains how to delete unused custom templates from the PC

For a complete list of available How To documents visit the Support section of our website: www.palm-tech.com/support/

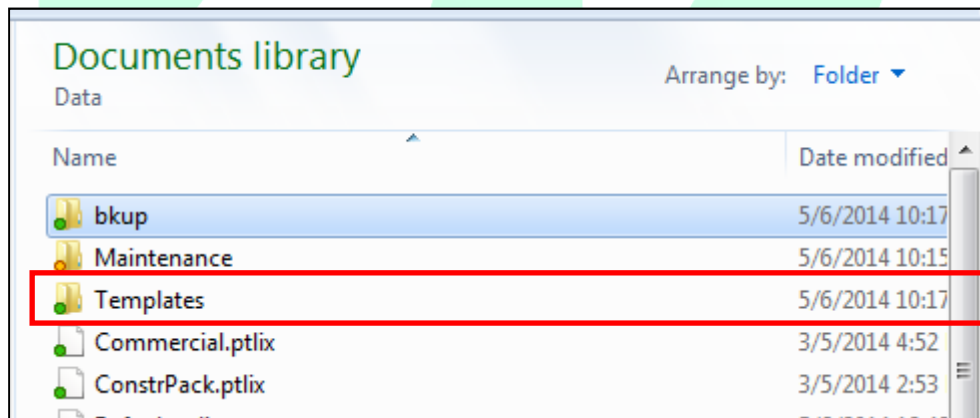
HOW TO: DELETE TEMPLATES

As you create your custom templates, there may be older versions of templates that you no longer need and would like to delete. This document walks through how to do this.

1. The first step is to close out of all programs related to Palm-Tech.
2. Next, open up File Explorer (or your Documents folder) and navigate to your Palm-Tech70 Folder. It will be located in C:/Documents/Palm-Tech70
3. Now, double click on the 'Data' folder.

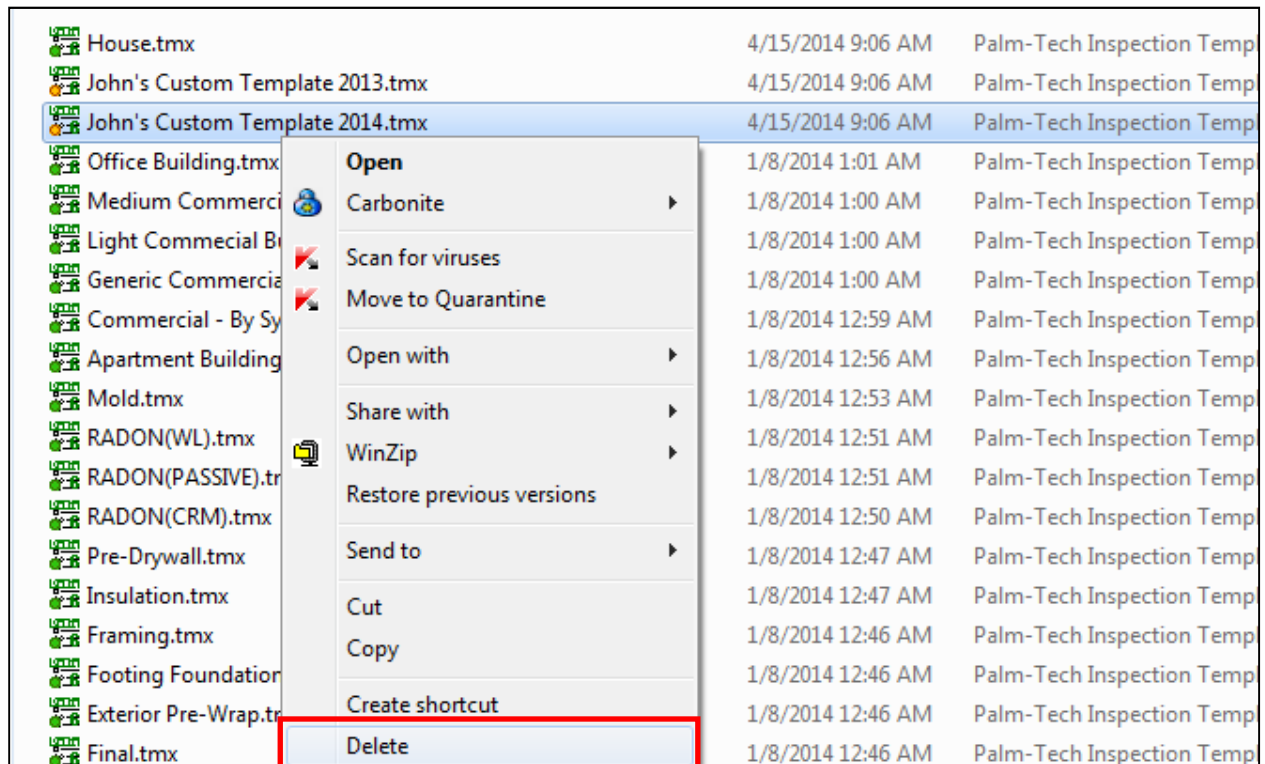


4. In the 'Data' folder you'll see a folder named 'Templates'. Double click on it.

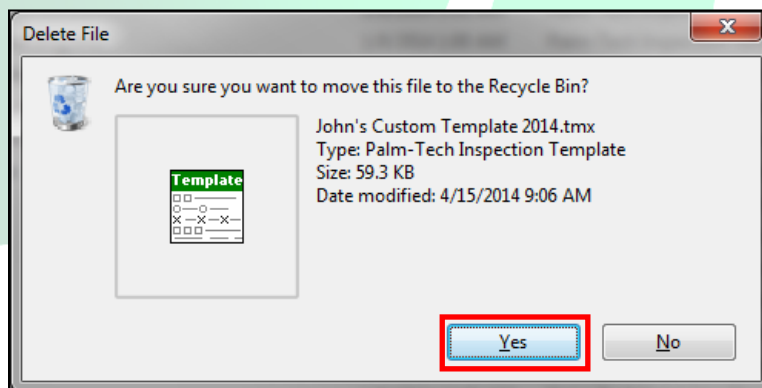


HOW TO: DELETE TEMPLATES

- In this folder you'll see a list of your templates. Next, right click on the template that you want to delete and you'll see several options to choose from. Click on 'Delete'.



- A window will appear asking if you are sure you want to delete this file. Click on 'Yes'.



- The template will now be deleted.