



Palm-Tech
HOME INSPECTION SOFTWARE

Step by Step

How To

Palm-Tech and ISN

This How To article will show you how to set up Palm-Tech and ISN, and then open an inspection from Inspection Support Network in Palm-Tech.

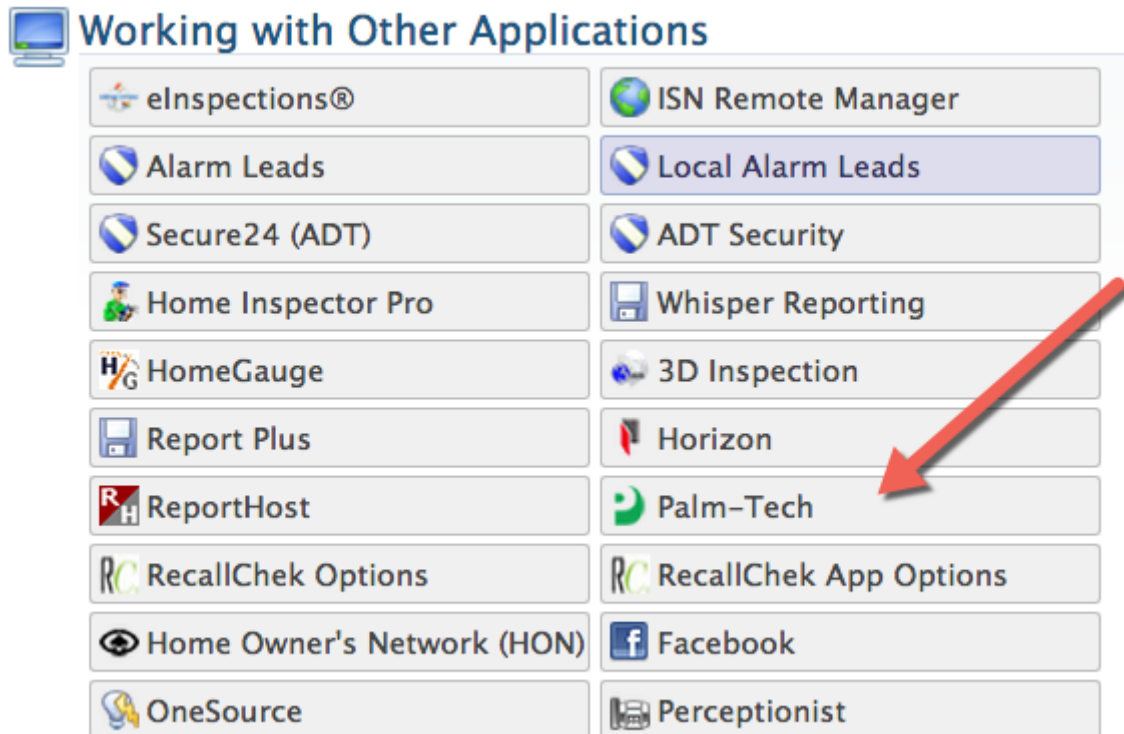
For a complete list of available How To documents visit the Support section of our website: www.palm-tech.com/support/

HOW TO: PALM-TECH AND ISN

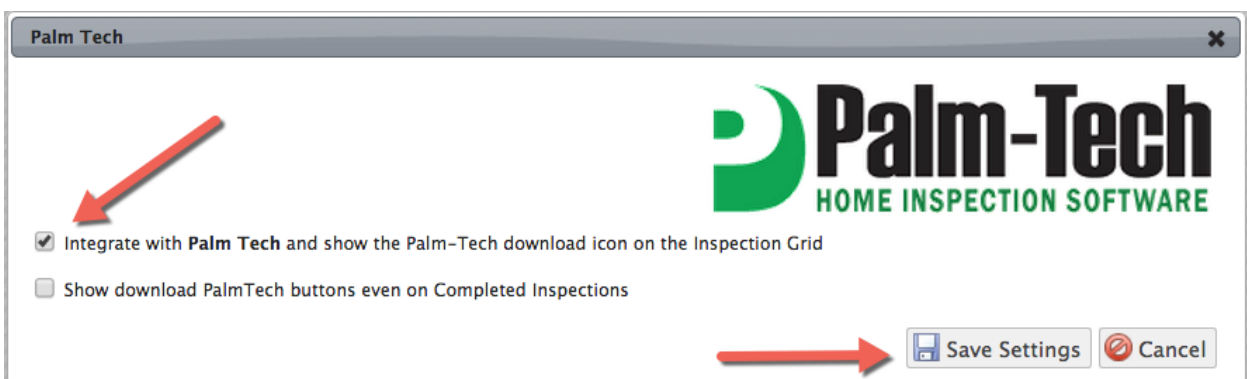
This document explains how to first setup Palm-Tech and ISN. Then walks you through how to open an inspection from Inspection Support Network (ISN) in Palm-Tech.

Setting up Palm-Tech and ISN

1. The first step is to open ISN. From there you will go to **Settings>Office Settings**. The under Working with Other Applications (bottom left of you screen) click on Palm-Tech



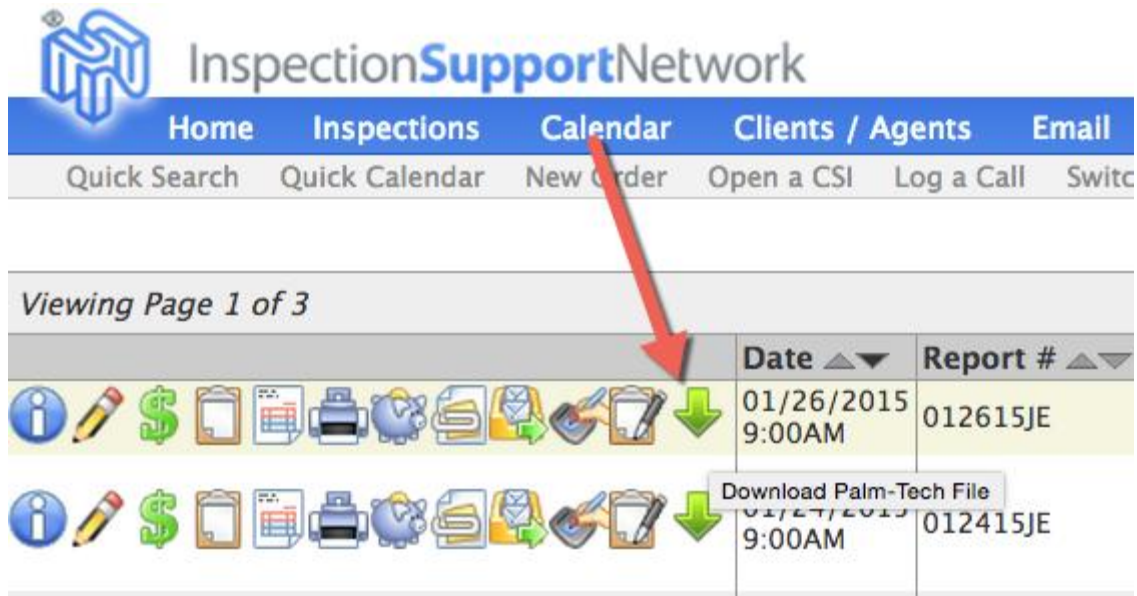
2. Now check 'Integrate with Palm-Tech and show the Palm-Tech download icon on the Inspection Grid.' Then click Save Settings.



HOW TO: PALM-TECH AND ISN

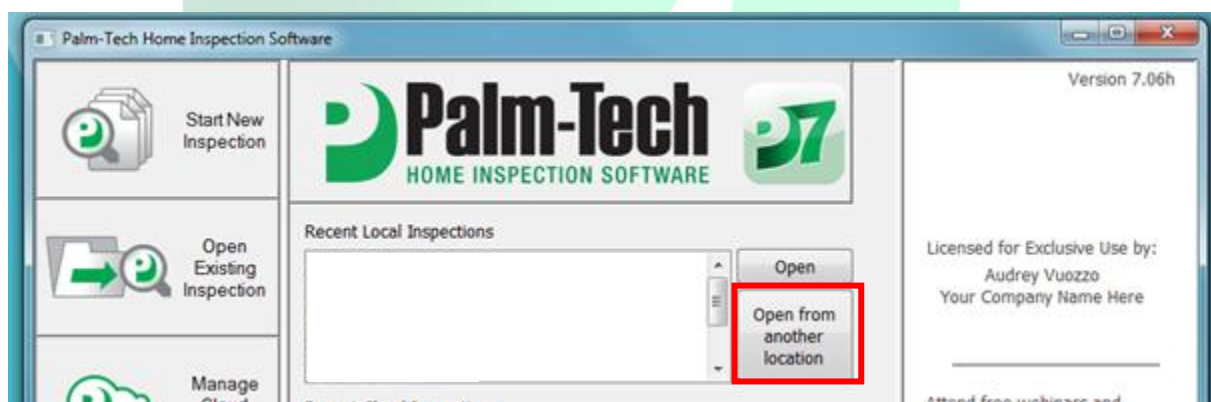
Opening an Inspection

1. Click on the green download arrow next to your inspection from the Inspection Grid.



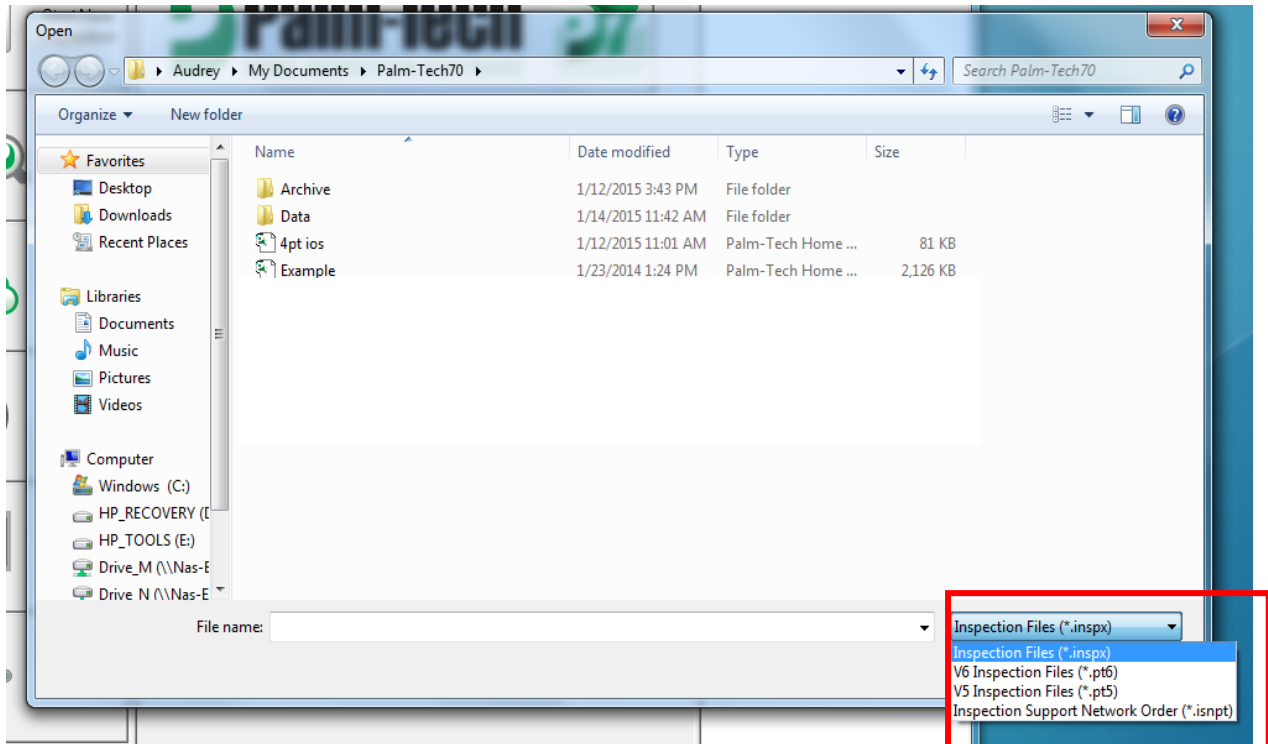
2. Now the file will be at the bottom of your screen. You can now save the file to a location you like best. For this example we are going to leave the file in the Download folder.

3. Next you will go open up Palm-Tech and click 'Open from Another Location'

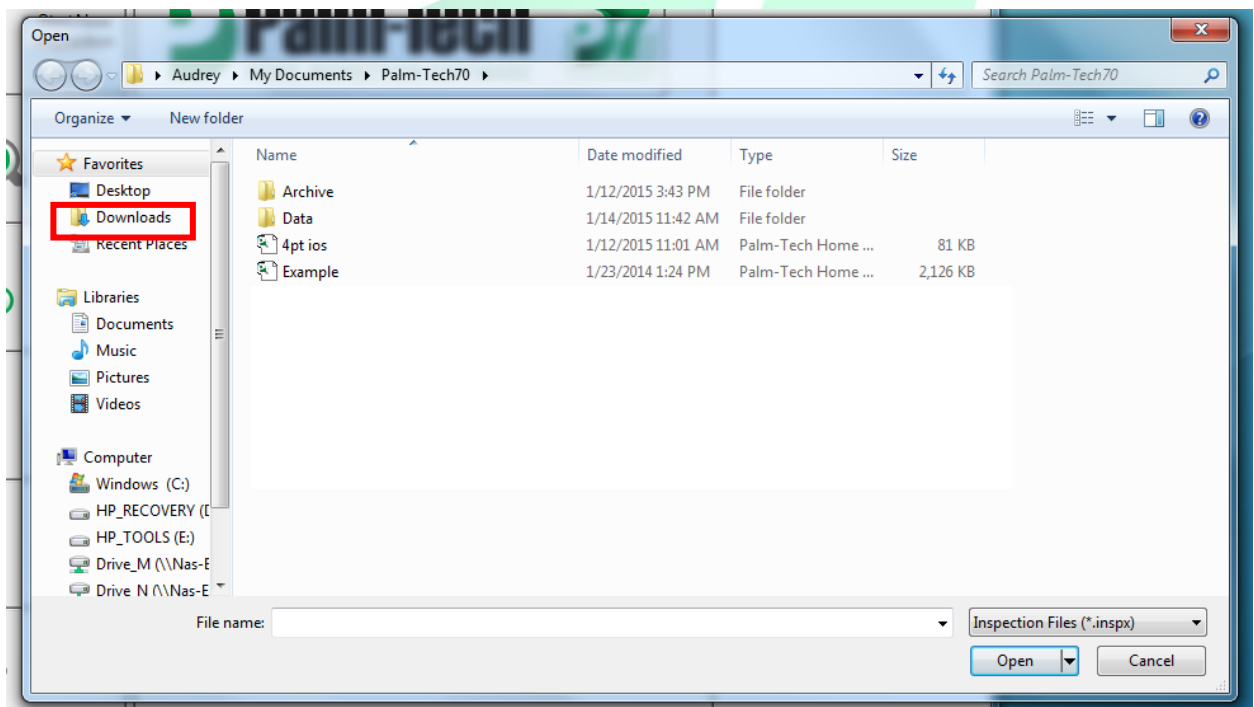


HOW TO: PALM-TECH AND ISN

4. The next step is to change the file type to from "Inspection files (*.inspx)," to "Inspection Support Network Order (*.isnpt)."



5. Next, navigate to the folder that your ISN inspection file is located in. For this example, we have it located in the 'Downloads' folder so we'll navigate to there.



HOW TO: PALM-TECH AND ISN

6. Once you are in the download folder you will double click on the file you want to open. Then you will select the template you want to use.

7. You must give the file a name and then hit save. After that you can either start working on the report on the PC or you can uploaded it to the cloud so you can do the inspection on the App.

