



Palm-Tech

HOME INSPECTION SOFTWARE

Step by Step

How To

Run the Latest Update on Your PC

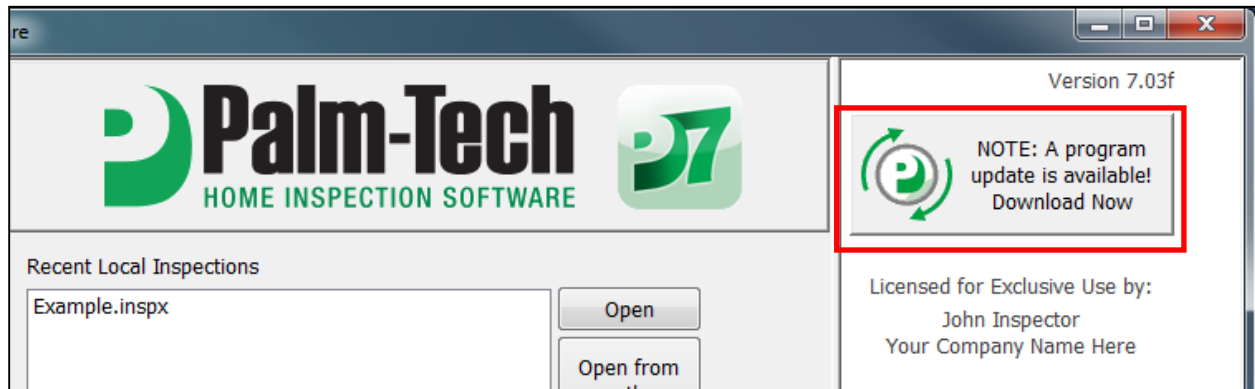
This How To article explains how to run the latest Palm-Tech update on your pc

For a complete list of available How To documents visit the Support section of our website: www.palm-tech.com/support/

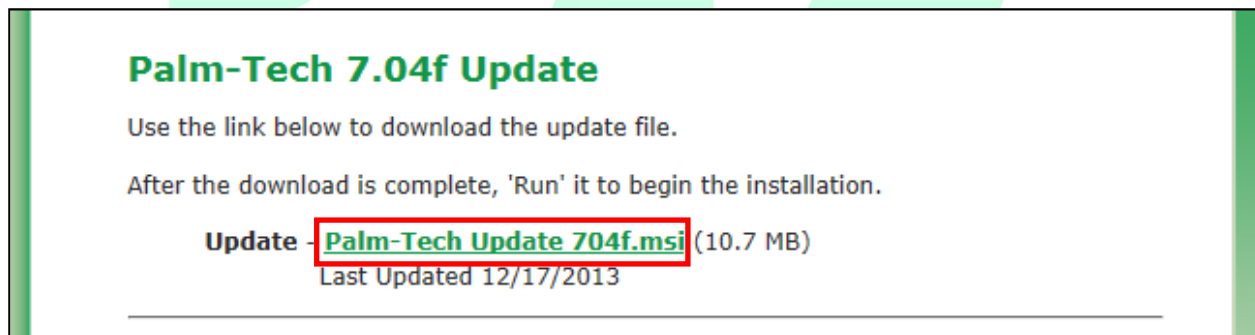
HOW TO: RUN THE LATEST PALM-TECH UPDATE ON YOUR PC

Palm-Tech releases updates to its program as time goes on. Anytime an update is available you will see a notification pop up on the Palm-Tech main program screen.

1. If a program update is available you will see a button in the top left corner of the main program screen. Click on this button.



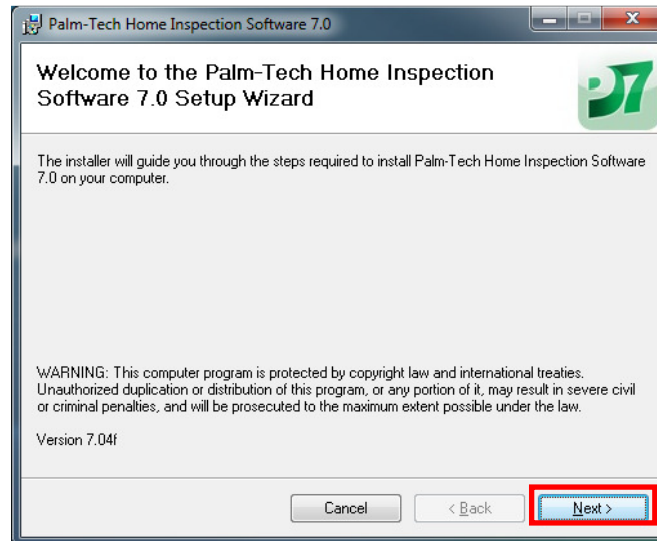
2. When you do this, it will bring up your internet browser and take you to a page on the Palm-Tech website that has information about the latest update and a spot where you can download it. To download the latest update, click on the update link.



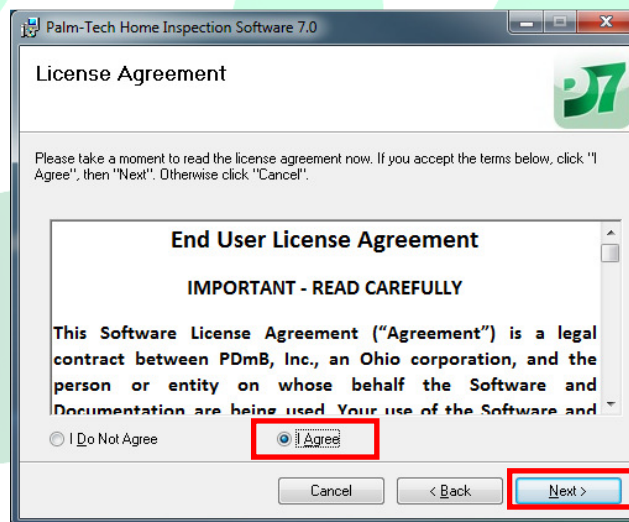
3. Depending on your internet browser and how it is setup to download files you may have the option to 'Run' the file, 'Save' the file or it may automatically download it and place it in your 'Downloads' folder. Regardless of how it works, the next step is to run the update.

HOW TO: RUN THE LATEST PALM-TECH UPDATE ON YOUR PC

4. Once the update begins you will see a screen like the one below. Click on 'Next' to continue.



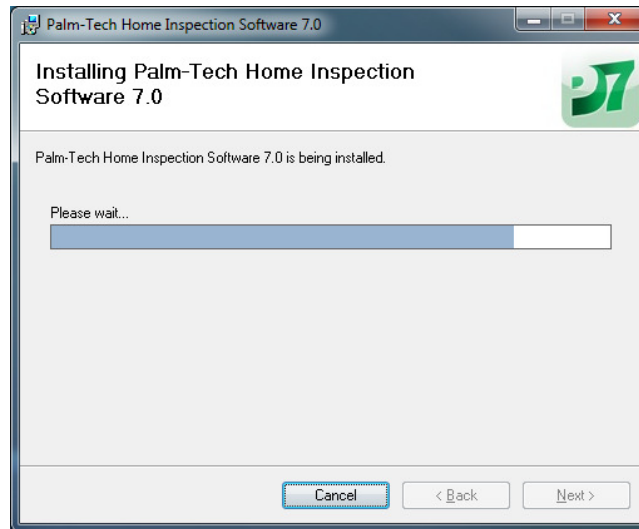
5. The next screen is the 'License Agreement'. You must agree to the terms before you can continue with the update. If you agree to the terms click on the 'I Agree' button and then click on 'Next'.



6. The update will walk you through several more screens and you can proceed after reading through them and confirming the information is correct. Simply continue to click on 'Next' to move forward.

HOW TO: RUN THE LATEST PALM-TECH UPDATE ON YOUR PC

7. The update will then begin to run.



8. Once finished you will see the message below stating the installation is complete. Simply click on 'Close' and the update will be complete.

