



# How To:

## Import Version 6 Data into Version 8

**This step by step How To article explains how to import your templates and libraries from Palm-Tech 6 into Palm-Tech 8.**

**For a complete list of available How To documents visit the Support section of our website: [www.palm-tech.com/support/](http://www.palm-tech.com/support/)**

# HOW TO: IMPORT VERSION 6 DATA INTO VERSION 8

---

**When upgrading to Palm-Tech 8, you are able to import all of your templates and libraries from Palm-Tech 6 so that you don't lose any data when upgrading to the latest version.**

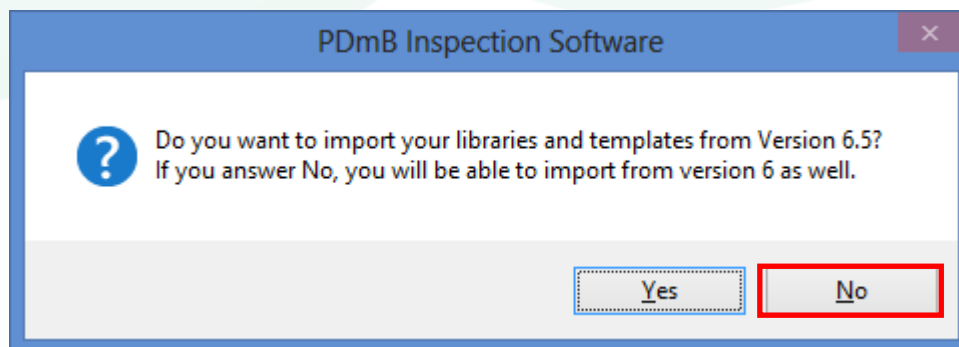
**In order to import from version 6, you will need to have versions 7 and 8 installed on the same PC. Then you will import from version 6 to 7 and then from version 7 to 8.**

## Installing version 7 and importing version 6 or 6.5

1. To import from version 6 to version 7, we'll first need to install version 7 on the same PC where version 6 is installed. To do this you'll click on the link to install version 7 from the setup email you received from Palm-Tech. You can also install version 7 from here: <http://www.palm-tech.com/files/Palm-TechSetup706k.msi>
2. After installing Palm-Tech 7, double click on the Palm-Tech 7 icon on your desktop.

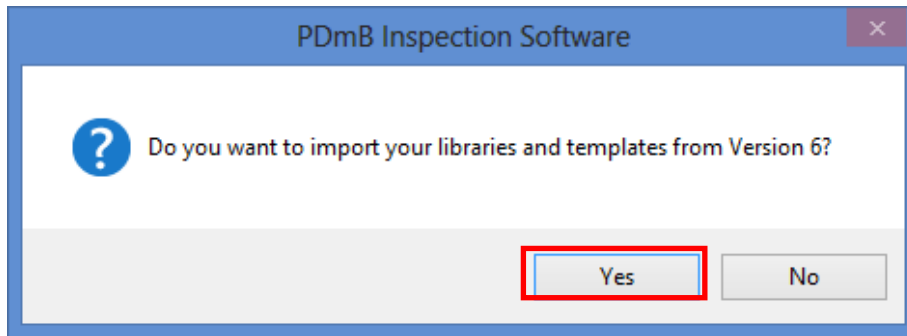


3. The program will recognize that you have a previous version of Palm-Tech already installed on the PC and will ask if you want to import your libraries and templates into version 7. The first box that appears asks if you want to import from version 6.5 and it lets you know that if you click 'No' you can import from version 6 with the next box. Since we are importing from version 6 for this How To, we'll click 'No' here.

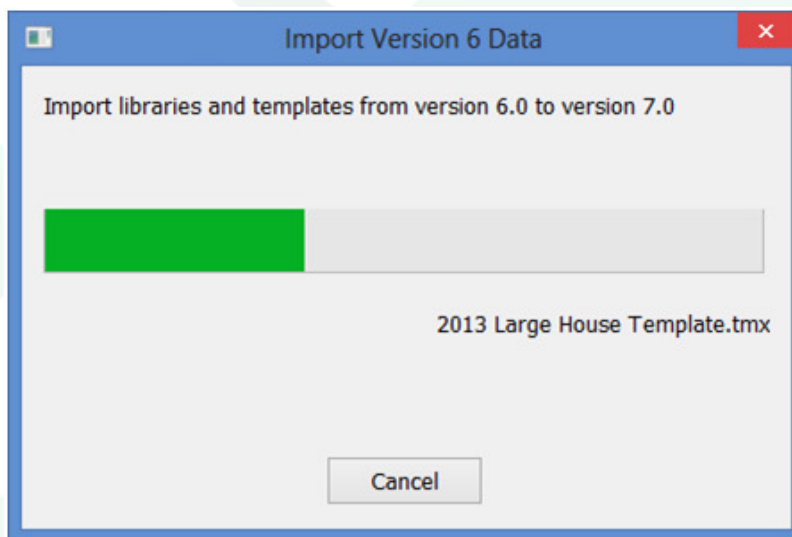


# HOW TO: IMPORT VERSION 6 DATA INTO VERSION 8

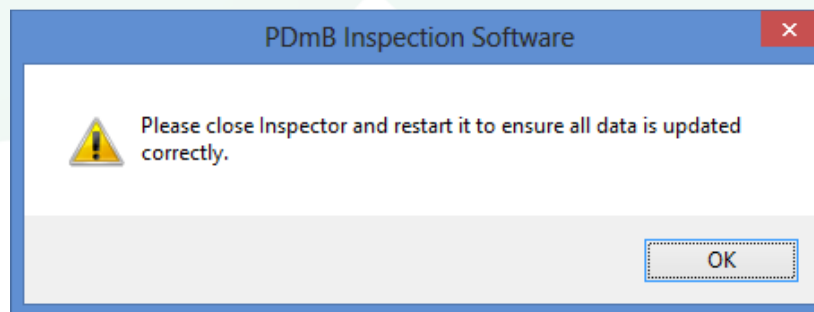
- The next box that appears asks if you want to import from version 6, click 'Yes'.



- A box will appear on screen showing the import in progress.



- Once the import is finished, completely close out of Palm-Tech and then go back into the program.

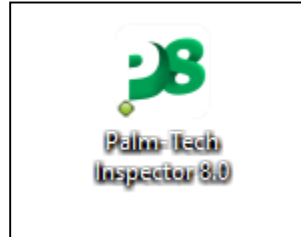


- You have successfully imported your libraries and templates from version 6 into version 7.

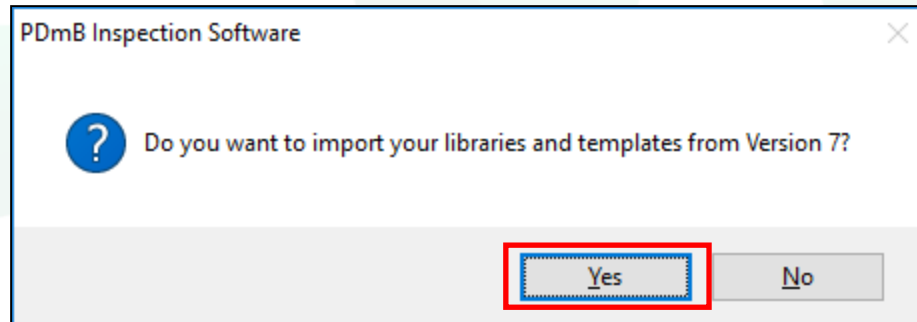
# HOW TO: IMPORT VERSION 6 DATA INTO VERSION 8

## Installing version 8 and importing version 7

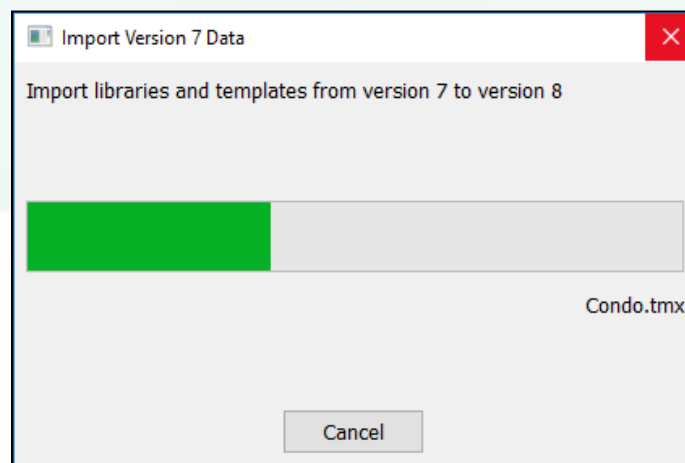
1. After installing Palm-Tech 8, double click on the Palm-Tech 8 icon on your desktop.



2. The program will recognize that you have version 7 of Palm-Tech installed on the PC and will ask if you want to import your libraries and templates into version 8. Click 'Yes'.



3. A box will appear on screen showing the import in progress.



4. Once the import is finished the Palm-Tech program will be opened and ready for use. You have successfully imported your libraries and templates from version 7 into version 8.