



# How To:

## Install Palm-Tech on a Windows PC

**This step by step How To article explains how to install Palm-Tech 8 on a Windows PC.**

**For a complete list of available How To documents visit the Support section of our website: [www.palm-tech.com/support/](http://www.palm-tech.com/support/)**

# How To: INSTALL PALM-TECH ON A WINDOWS PC

**Based on your PC and internet browser, the steps may vary slightly when installing a program to your PC. For example, running the download may be different with Internet Explorer, than with Firefox or Chrome.**

1. Have your Palm-Tech 8 setup email open. This is the email you received from Palm-Tech when you got started with Palm-Tech 8.

Follow the steps below to install Palm-Tech 8.

**Installing to a Windows PC** - If you already have the Palm-Tech 8 Demo installed, then skip to step #6

1. Download Palm-Tech 8 from here - <http://www.palm-tech.com/files/Palm-TechSetup812f.msi>
2. Once the program is downloaded, you'll need to run the download.
3. When the installation is finished, double click on the Palm-Tech 8 icon on your desktop.
4. If you have version 7 installed, you will be prompted to import your templates and libraries. To bring over your templates and libraries from version 7, click Yes.
5. Once the program is finished updating your profile, the Palm-Tech shell will open.
6. Next, you'll need to license the program to you. To do this you'll click on the Support button in the bottom left corner of the shell.
7. Then you'll click 'Get/Reset License' in the bottom right corner of the middle box.
8. The program will ask if you have a username and password issued by PDmB, click Yes.
9. Enter the username and password below and click Continue:

**NOTE:** The username and password are case sensitive so be sure to enter them exactly as you see below. It may be easiest to copy and paste into the program. You will also need an internet connection to complete the licensing.

User Name: Inspector\_123

Pass: abc123

10. If the username and password is entered correctly, you'll see a window that says the license was successfully retrieved, click OK.
11. In the top right corner of the shell, the program should now show that it is licensed to you.
12. You are finished with the PC installation.

#### **Installing the Palm-Tech App**

If you plan on using the Palm-Tech app on a mobile device such as a smartphone or tablet, follow the instructions below to install the app. If you do not plan on using the app, you are finished with the installation.

Next, we want to install the Palm-Tech app onto your device. If you already have the demonstration version of the app installed, you can just enter your new User Name and Password under Settings. If you still need to install the app, open the Google Play Store (Android Market) or Apple App Store and search 'Palm-Tech' and then install. When it prompts you for a User Name and Password, you will enter the same login information as above.

For everything you need to know about getting started, visit our webpage here - [http://www.palm-tech.com/getting\\_started.php](http://www.palm-tech.com/getting_started.php)

**Please keep this email in case you need to reinstall version 8 to another device in the future.**

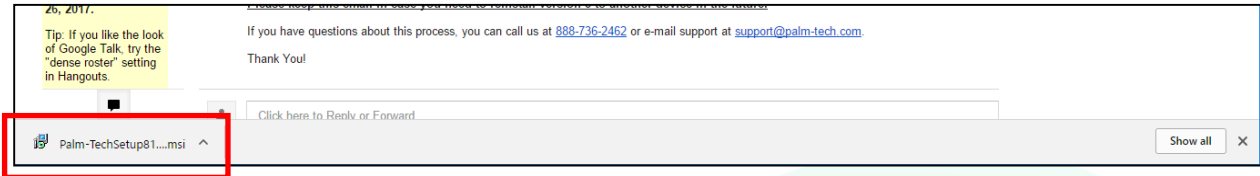
If you have questions about this process, you can call us at [888-736-2462](tel:888-736-2462) or e-mail support at [support@palm-tech.com](mailto:support@palm-tech.com).

2. Click on the link in the email to begin the install. To make sure you have the latest version of Palm-Tech, use the link provided in the email.

1. Download Palm-Tech 8 from here <http://www.palm-tech.com/files/Palm-TechSetup812f.msi>

# How To: INSTALL PALM-TECH ON A WINDOWS PC

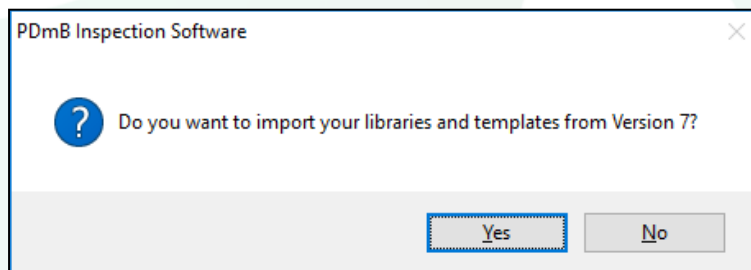
3. Once the program is downloaded, you'll need to 'Run' or 'Save' (and then 'Run') the download. Since it is a download from the internet, you'll want to save the download when you have the option. You may not see an option to save and that's fine. In this case you'll run the download typically by clicking 'Run' or double clicking on the download.



4. Once the installation process begins follow the onscreen prompts to complete the process. When the installation is finished you will see an icon for Palm-Tech 8 on your desktop. Double click on this icon to open the program.

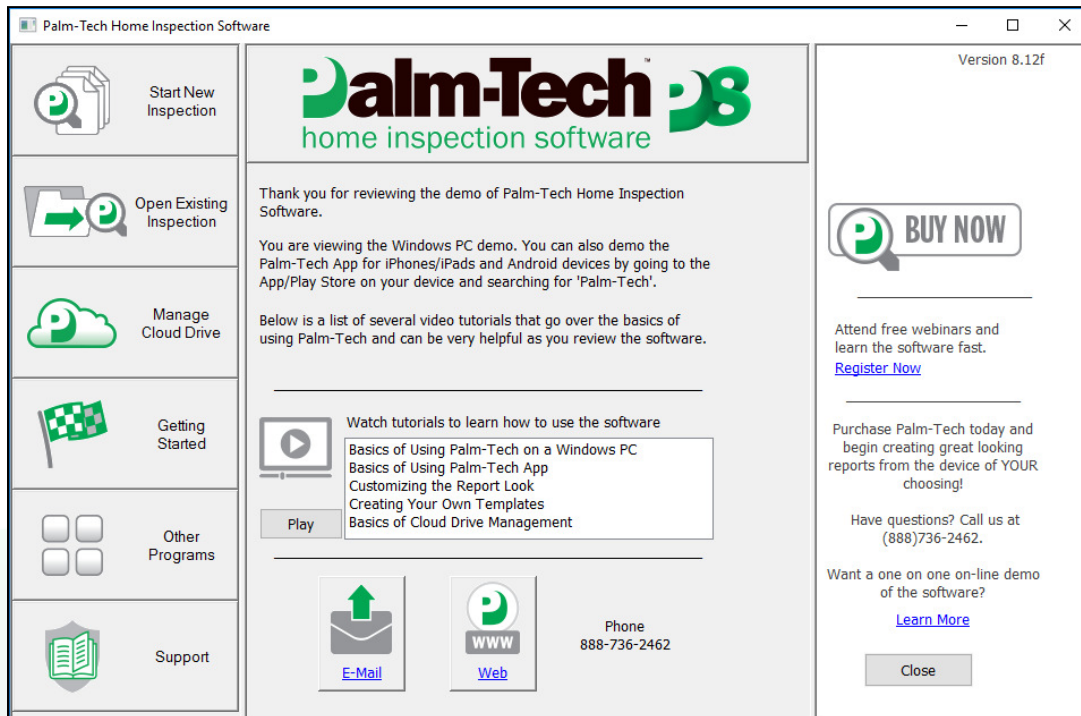


5. If you have version 7 installed, you will be prompted to import your templates and libraries. To bring over your templates and libraries from version 7, click 'Yes'. If you do not have Version 7 installed then click on 'No'.

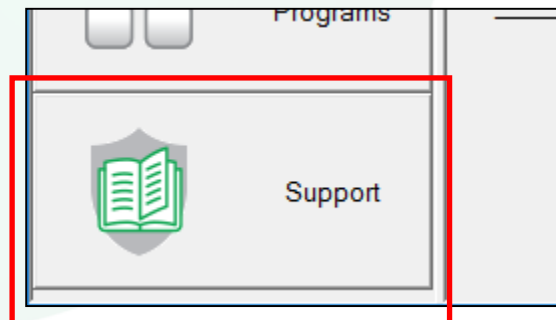


# How To: INSTALL PALM-TECH ON A WINDOWS PC

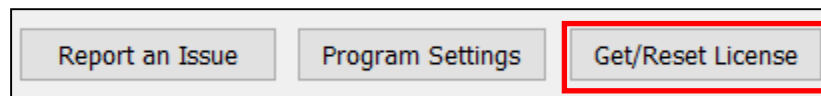
6. Once the program is finished updating your profile, the Palm-Tech shell will open.



7. Next, you'll need to license the program to you. To do this you'll click on the Support button in the bottom left corner of the shell.

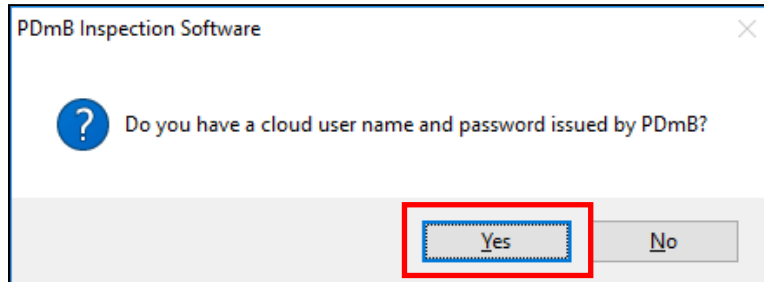


8. Then you'll click 'Get/Reset License' in the bottom right corner of the middle box.



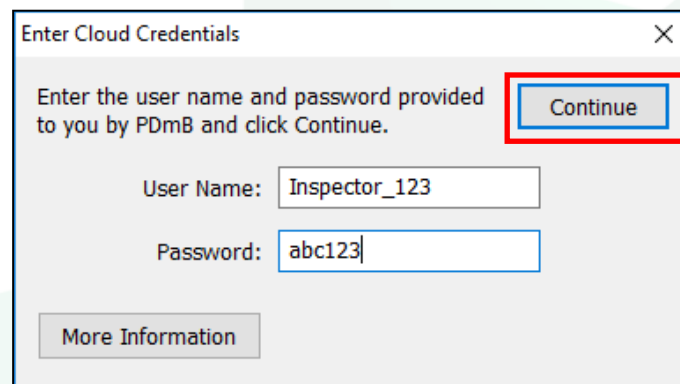
# How To: INSTALL PALM-TECH ON A WINDOWS PC

- The program will ask if you have a username and password issued by PDmB, click Yes.

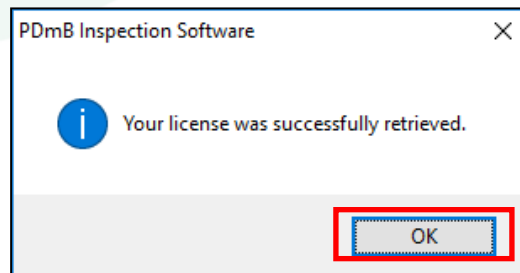


- Enter the username and password and click Continue.

**NOTE:** The username and password are case sensitive so be sure to enter them exactly as they appear in the setup email. It may be easiest to copy and paste into the program. You will also need an internet connection to complete the licensing.



- If the username and password are entered correctly, you'll see a window that says the license was successfully retrieved, click OK.



# How To: INSTALL PALM-TECH ON A WINDOWS PC

---

12. In the top right corner of the shell, the program should now show that it is licensed to you.

Licensed for Exclusive Use by: John Inspector Your Company Name Here
--

13. Palm-Tech 8 has successfully been installed and you are now ready to begin using the program.

