



# How To:

## **Reset the Inspection Files Location**

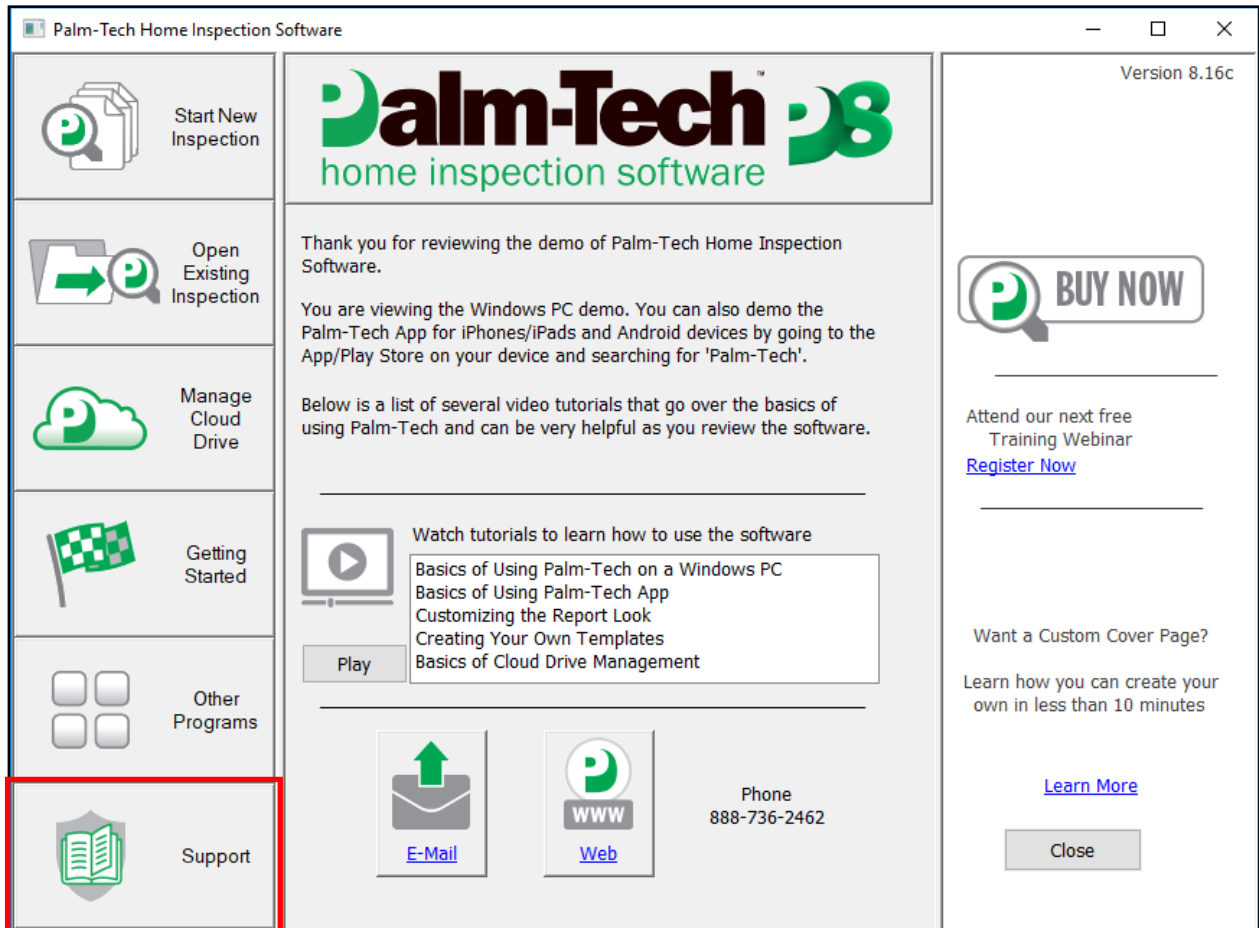
This step by step How To article explains how to reset the inspection files location to the default location.

For a complete list of available How To documents visit the Support section of our website: [www.palm-tech.com/support/](http://www.palm-tech.com/support/)

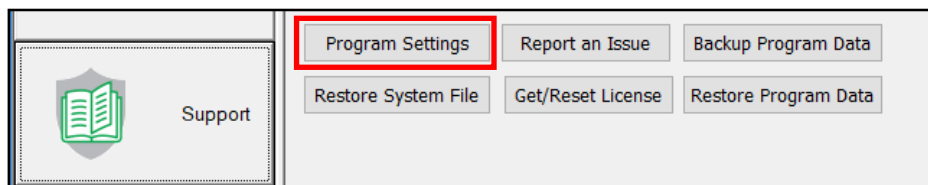
# HOW TO: RESET THE INSPECTION FILES LOCATION

**Palm-Tech automatically saves your inspection files and PDFs by default in the Palm-Tech80 folder which is located in C:\Documents\Palm-Tech80. This guide will walk you through resetting the Inspection file location back to the default location.**

1. The first step is to click on the Support button from the Shell.

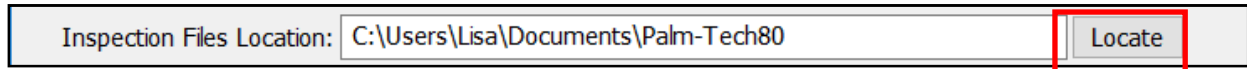


2. Next Click on Program Settings.

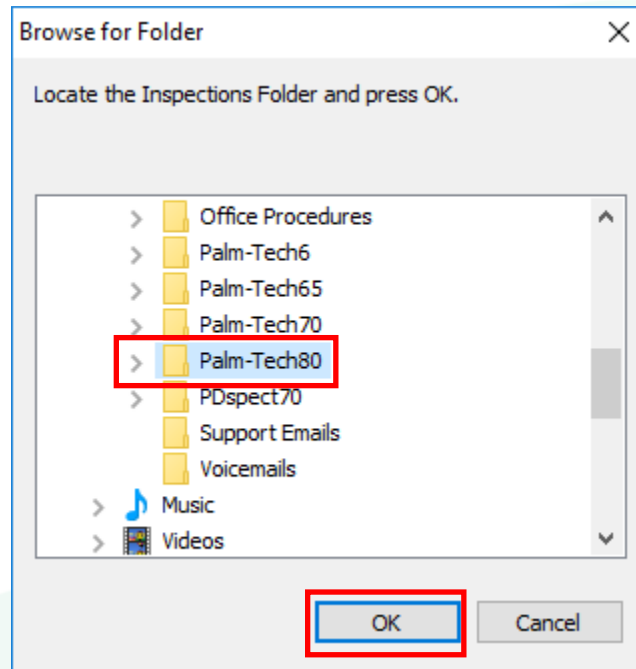


# HOW TO: RESET THE INSPECTION FILES LOCATION

- Next, you will have an option for 'Inspection Files Location' and it will show what the current inspection files location is set to. To the left, there is an option for 'Locate'. To reset the inspection files location, click on 'Locate'.



- Now, simply navigate to the C:\Documents\Palm-Tech80 and click on OK.



- Your 'Inspection Files Location' will now be reset to the default location.

