



front porch news

Karen Acevedo | 555-333-2222 | karen@coldwellbanker.com

"I Wonder What They're Asking..."

No need to wonder about the price of a home, or download a cumbersome app just for a quick answer. Just text me the address.

987-654-3210

Rebus & Canting Arms

You've seen coats of arms from medieval times. Did you know that many of them are visual puns (called a rebus) rather than any sort of display of power?

For example, this shield represents Elizabeth Bowes-Lyon (Queen Elizabeth the Queen Mother). It doesn't depict the power of lions or the skillful use of the bow and arrow. Instead, it's simply a pun, also known as a cant, using lions and bows to represent the name, Bowes-Lyon.



April Quiz Question

What is special about this series of numbers: 8591730?

Word play like this was common in the middle ages when secret messages were often written as rebuses. Can you guess the phrases represented by these modern day rebuses? (Answers on page 2.)

- ban ana
- noon lazy
- gesg
- ecnalg
- pas
- millio1n

Some Colors Go Together Better than Others

Here's Why...

Both science and conventional color wisdom say that colors on opposite sides of a color wheel—complementary colors—look good together in your home decor.

The most common sets of complementary colors are red and green, yellow and purple, and orange and blue, derived from the Red-Yellow-Blue color model. If

you use a different color model, you'll have different sets of complementary colors. For instance, in the *additive* color model, the complements are green and magenta, red and cyan, and blue and yellow. (IKEA, anyone?)

Complementary colors work because different types of cones (photoreceptor cells) in your eye perceive different colors of light. If you stare at a block of color and then quickly look at a white wall, you'll see a faint afterimage in the complementary color. For instance, if you stare at a blue square, after a while the cells in your eye that process blue light will become fatigued, making the signal they send to your brain weaker. Since that part of the visual spectrum is suppressed, when you look at a white wall after staring at the blue square, you'll see a faint orange afterimage—the complimentary color.

So what does this mean for your decor? It means that combinations of primary and complementary colors are dynamic together. Choose a color model to start with, then pick a complementary pair to decorate around.



Have You Seen My Website?

Every real estate buyer or seller needs information. Buyers need to see listings. Sellers need data. Drop by my website to get what you need to make decisions.

www.coldwellbanker.com



OPEN HOUSE – SUNDAY APRIL 15, 1-4 pm 123 Lake View Dr. | 7 Bed / 8 Baths

Don't miss this one-of-a-kind lake home with a two-bedroom guest suite.



Free Report

7 Cracks Where Home Buyers Lose Money

A mortgage is the biggest debt most of us will ever have.

Because the numbers are so big, thousands of dollars can easily slip away without a borrower ever noticing. Contact me for a copy of these 7 money-draining cracks to avoid.



front porch news

Karen Acevedo
Coldwell Banker
123 Main St.
Milwaukee, MN 54820

Rebus (from page 1)

- **ban ana** = banana split
- **noon lazy** = lazy afternoon
- **gesg** = scrambled eggs
- **ecnalg** = backward glance
- **pas** = incomplete pass
- **millio1n** = one in a million

Thank You!

Welcome new clients and Thank You friends who've trusted me to work with you, your friends, and acquaintances. Special thanks to...

Gary and Susan Smith
Kara Turner
Beth and Katana

Please introduce me to the people you care about, so I can help them, too!

Win a \$10 Coffee Card on Me

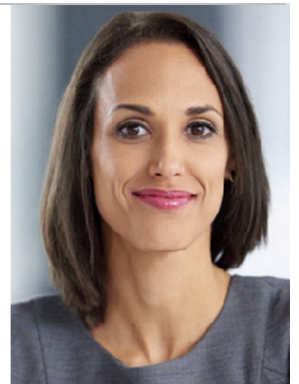
Send me your answer to the quiz question on page 1. Each month, all correct entries have a chance to win. Send your answer to karen@coldwellbanker.com

- **Last Month's Quiz:** Which character is first to speak in the original "Star Wars" movie?
- **Answer:** C3PO.



Congratulations to last month's winner!

Tim Cantwell



Karen Acevedo
987-654-3210

karen@coldwellbanker.com