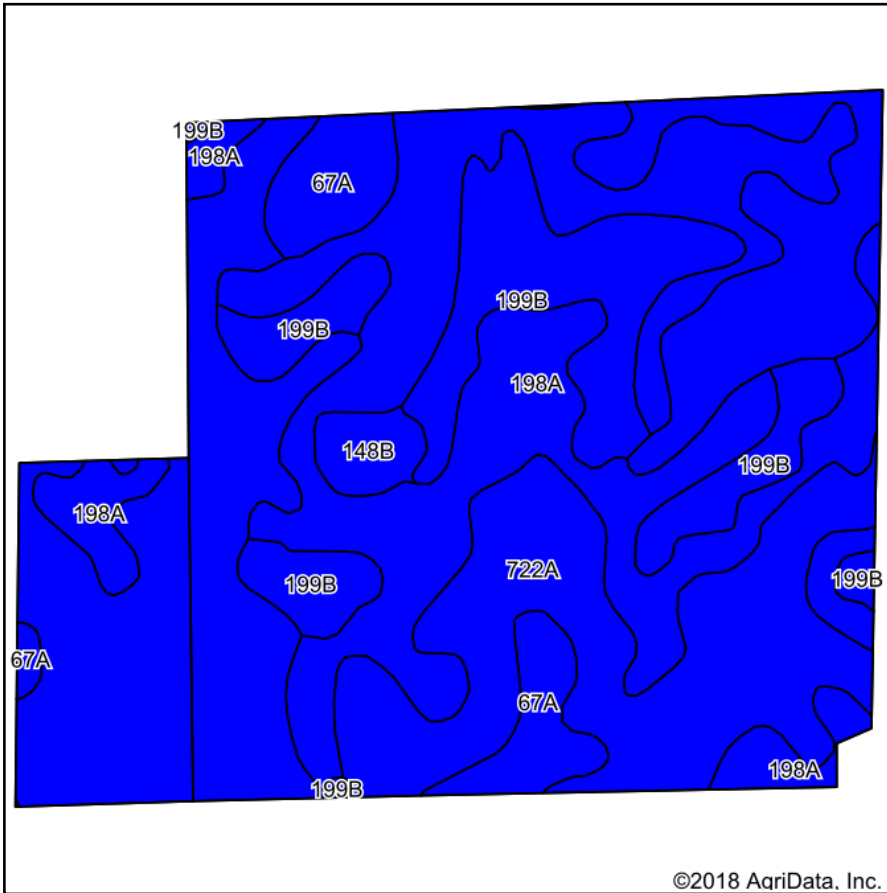
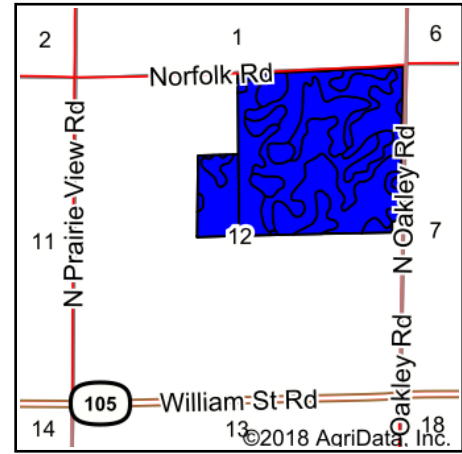


Soils Map



Soils data provided by USDA and NRCS.



State: **Illinois**
 County: **Macon**
 Location: **12-16N-3E**
 Township: **Oakley**
 Acres: **179.2**
 Date: **10/18/2018**


**FIRST ILLINOIS
 AG GROUP**

Maps Provided By:



Area Symbol: IL115, Soil Area Version: 15

Code	Soil Description	Acres	Percent of field	Il. State Productivity Index Legend	Corn Bu/A	Soybeans Bu/A	Wheat Bu/A	Crop productivity index for optimum management
722A	Drummer-Milford silty clay loams, 0 to 2 percent slopes	82.15	45.8%		184	60	70	137
198A	Elburn silt loam, 0 to 2 percent slopes	58.75	32.8%		197	61	74	143
**199B	Plano silt loam, 2 to 5 percent slopes	25.95	14.5%		**192	**59	**73	**141
67A	Harpster silty clay loam, 0 to 2 percent slopes	9.67	5.4%		182	57	68	133
**148B	Proctor silt loam, 2 to 5 percent slopes	2.68	1.5%		**183	**57	**69	**134
Weighted Average					189.3	60	71.6	139.3

Table: Optimum Crop Productivity Ratings for Illinois Soil by K.R. Olson and J.M. Lang, Office of Research, ACES, University of Illinois at Champaign-Urbana. Version: 1/2/2012 Amended Table S2 B811

Crop yields and productivity indices for optimum management (B811) are maintained at the following NRES web site: <http://soilproductivity.nres.illinois.edu/>

** Indexes adjusted for slope and erosion according to Bulletin 811 Table S3

Soils data provided by USDA and NRCS. Soils data provided by University of Illinois at Champaign-Urbana.

*c: Using Capabilities Class Dominant Condition Aggregation Method