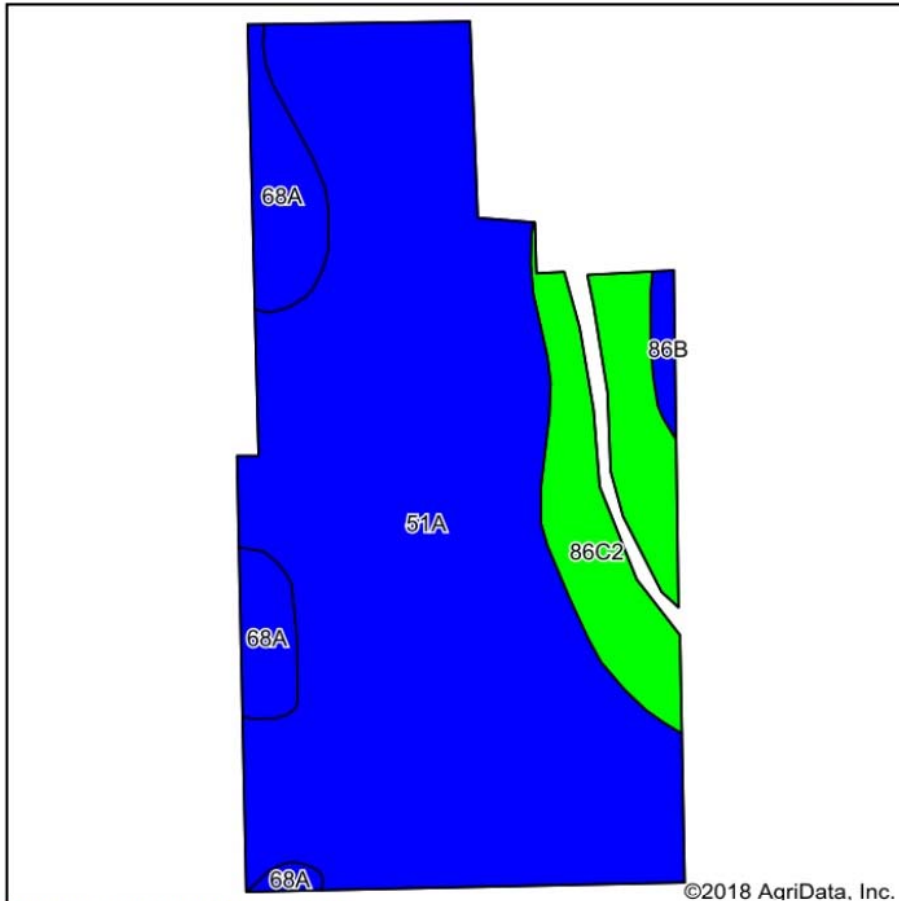
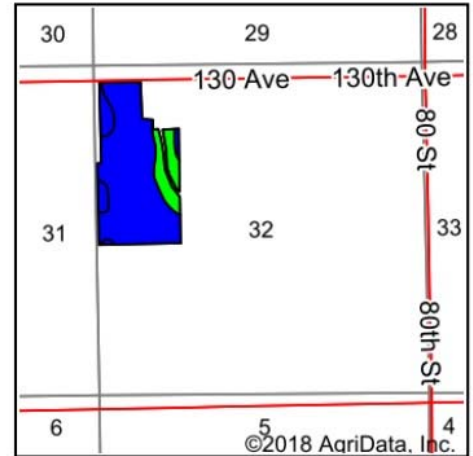


# Soils Map



Soils data provided by USDA and NRCS.



State: **Illinois**  
 County: **Warren**  
 Location: **32-10N-2W**  
 Township: **Lenox**



Area Symbol: IL187, Soil Area Version: 12

Code	Soil Description	Acres	Percent of field	Il. State Productivity Index Legend	Subsoil rooting <sup>a</sup>	Corn Bu/A	Soybeans Bu/A	Wheat Bu/A	Crop productivity index for optimum management
51A	Muscature silt loam, 0 to 2 percent slopes	51.48	77.8%		FAV	200	64	75	147
**86C2	Osco silt loam, 5 to 10 percent slopes, eroded	8.90	13.4%		FAV	**178	**56	**70	**131
68A	Sable silty clay loam, 0 to 2 percent slopes	5.11	7.7%		FAV	192	63	74	143
**86B	Osco silt loam, 2 to 5 percent slopes	0.71	1.1%		FAV	**189	**59	**74	**140
Weighted Average						196.3	62.8	74.2	144.5

**Table: Optimum Crop Productivity Ratings for Illinois Soil by K.R. Olson and J.M. Lang, Office of Research, ACES, University of Illinois at Champaign-Urbana. Version: 1/2/2012 Amended Table S2 B811**

Crop yields and productivity indices for optimum management (B811) are maintained at the following NRES web site: <http://soilproductivity.nres.illinois.edu/>

\*\* Indexes adjusted for slope and erosion according to Bulletin 811 Table S3

<sup>a</sup> UNF = unfavorable; FAV = favorable

Soils data provided by USDA and NRCS. Soils data provided by University of Illinois at Champaign-Urbana.

\*c: Using Capabilities Class Dominant Condition Aggregation Method