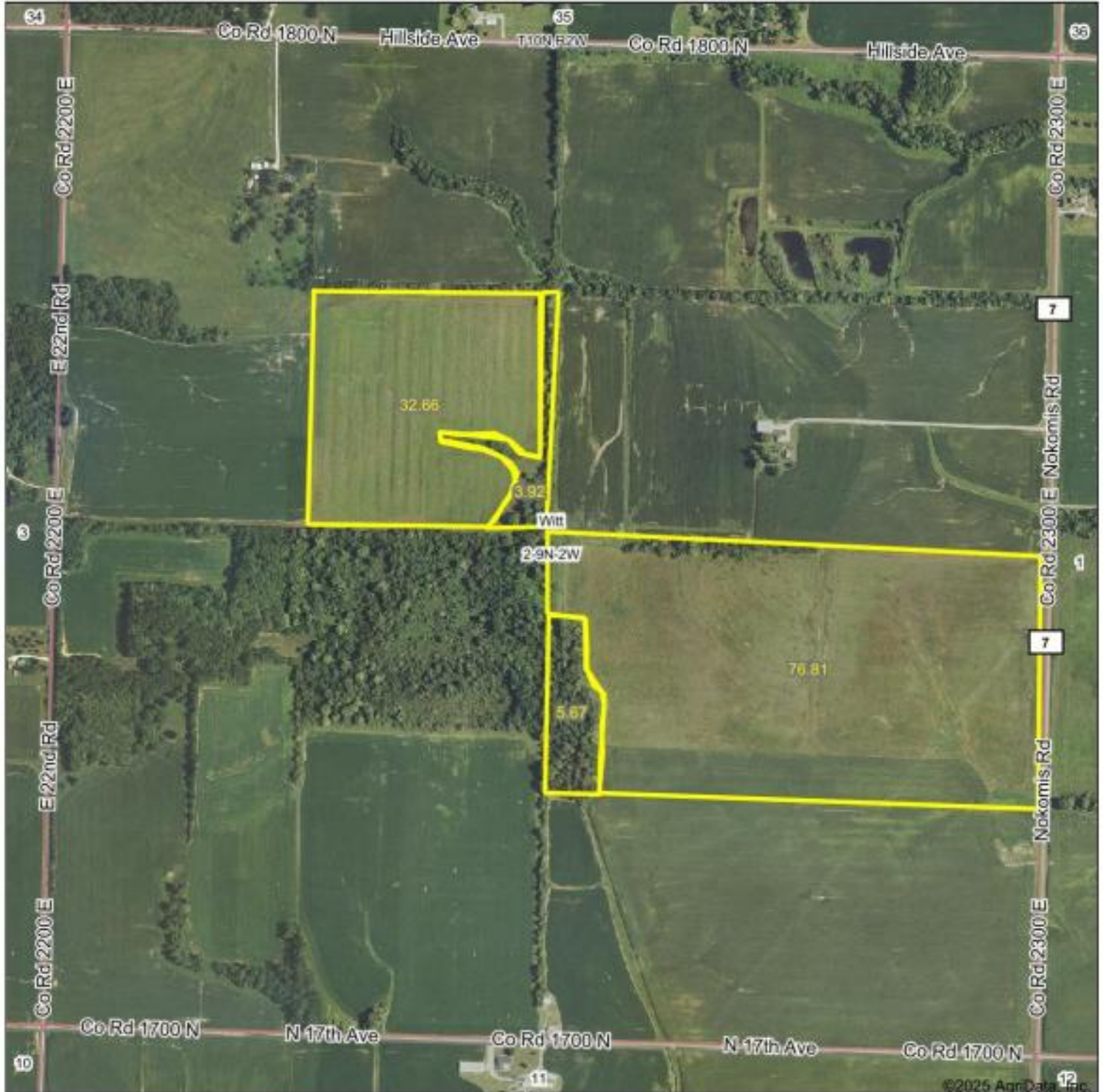
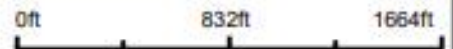


Aerial Map



Boundary Center: 39° 15' 14.86, -89° 16' 35.05



FIRST ILLINOIS
AG GROUP



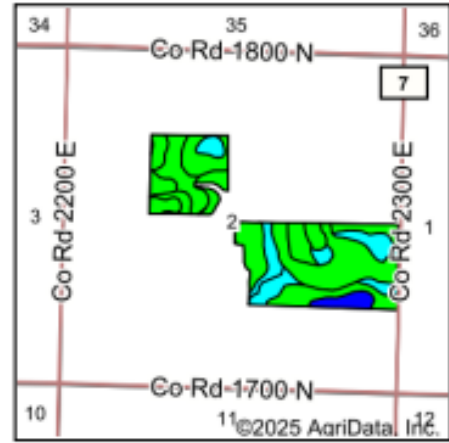
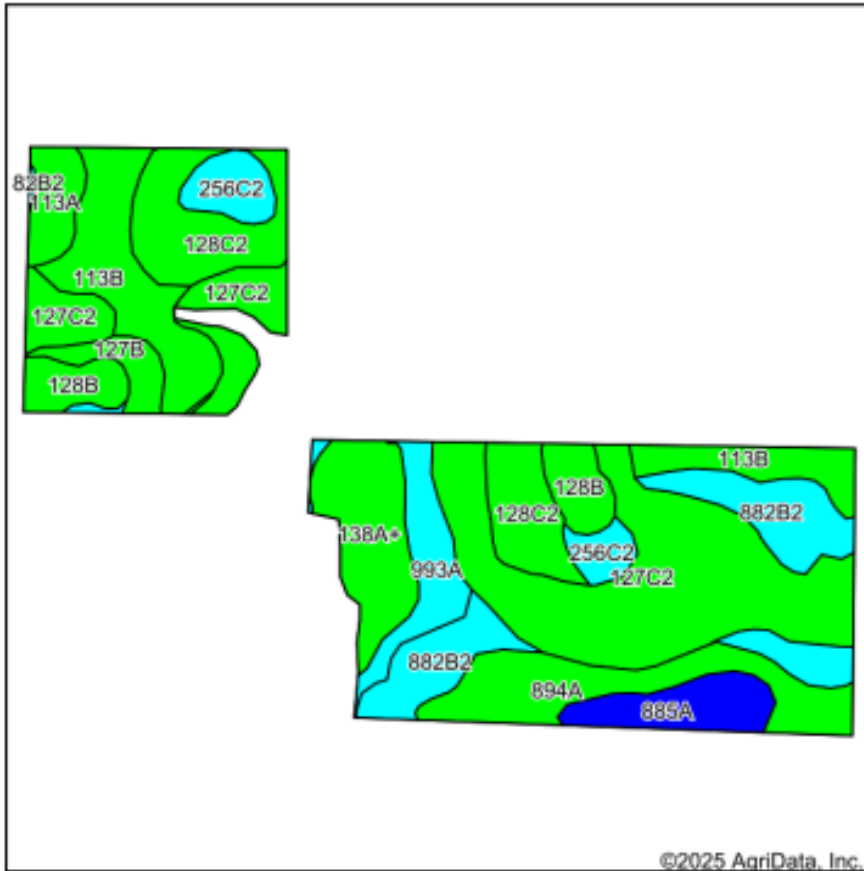
© AgrData, Inc. 2025 www.AgrDataInc.com

2-9N-2W
Montgomery County
Illinois



9/18/2025

Soils Map



State: **Illinois**
 County: **Montgomery**
 Location: **2-9N-2W**
 Township: **Witt**
 Acres: **106.16**
 Date: **9/18/2025**

FIRST ILLINOIS
AG GROUP



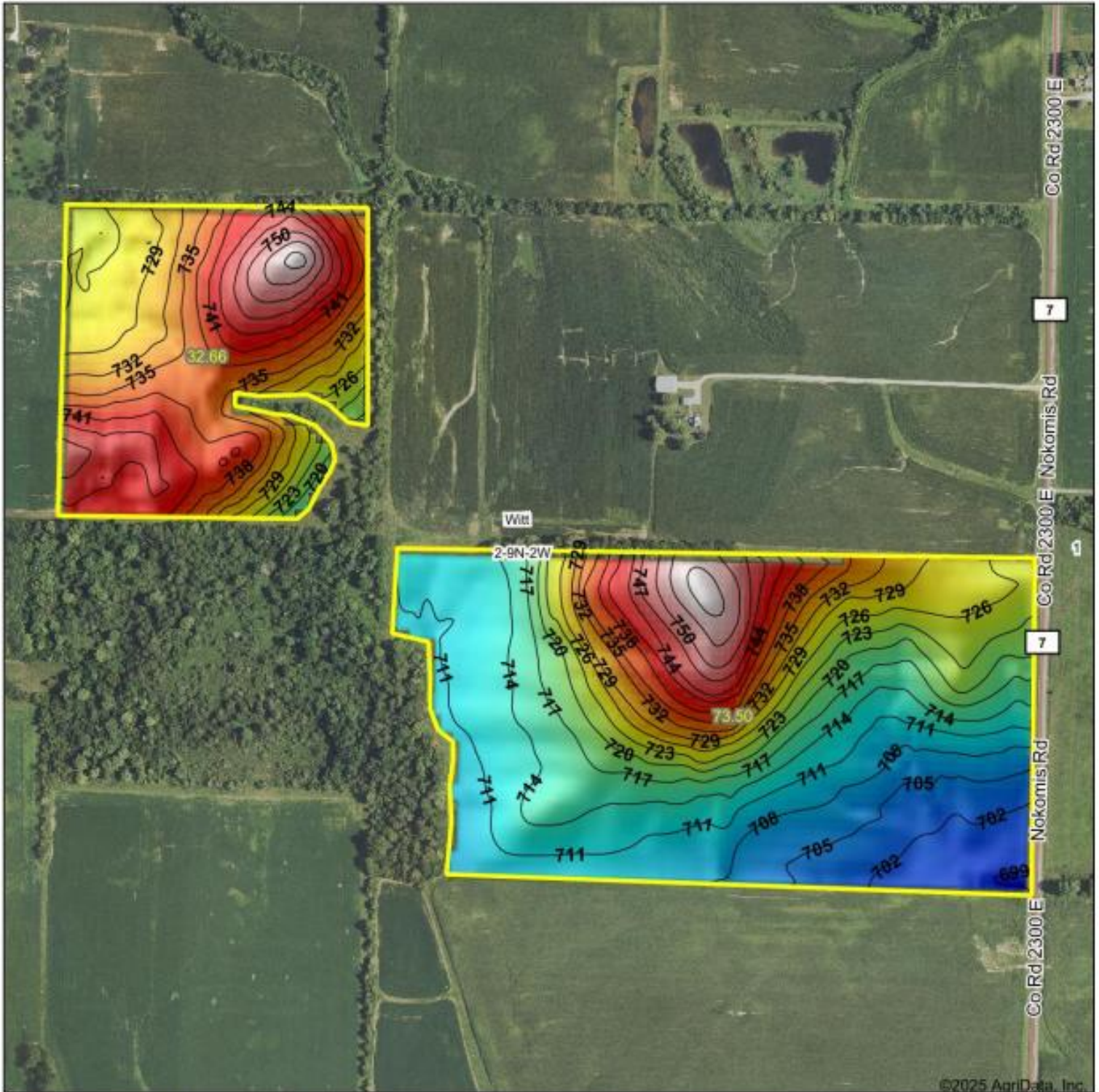
©2025 AgriData, Inc.

Soils data provided by USDA and NRCS.

Area Symbol: IL135, Soil Area Version: 21							
Code	Soil Description	Acres	Percent of field	Il. State Productivity Index Legend	*Corn Bu/A	*Soybeans Bu/A	*Crop productivity index for optimum management
**127C2	Harrison silt loam, 5 to 10 percent slopes, eroded	29.89	28.1%		**166	**51	**121
**113B	Ocoonee silt loam, 2 to 5 percent slopes	12.61	11.9%		**162	**50	**118
**882B2	Ocoonee-Darmstadt-Coulterville silt loams, 2 to 5 percent slopes, eroded	11.88	11.2%		**139	**45	**104
**128C2	Douglas silt loam, 5 to 10 percent slopes, eroded	11.41	10.7%		**162	**50	**118
894A	Herrick-Biddle-Piasa silt loams, 0 to 2 percent slopes	9.33	8.8%		162	53	121
**138A+	Shiloh silt loam, 0 to 2 percent slopes, overwash	7.54	7.1%		**177	**58	**131
**128B	Douglas silt loam, 2 to 5 percent slopes	4.96	4.7%		**172	**53	**126
993A	Cowden-Piasa silt loams, 0 to 2 percent slopes	4.87	4.6%		148	49	111
**885A	Virden-Fosterburg silt loams, 0 to 2 percent slopes	4.46	4.2%		**182	**59	**136
**256C2	Pana loam, 5 to 10 percent slopes, eroded	4.24	4.0%		**141	**47	**105
113A	Ocoonee silt loam, 0 to 2 percent slopes	2.77	2.6%		164	50	119
**127B	Harrison silt loam, 2 to 5 percent slopes	2.20	2.1%		**177	**54	**129
Weighted Average					161.8	51	119

Soils data provided by USDA and NRCS. Soils data provided by University of Illinois at Champaign-Urbana.

Topography Hillshade



FIRST ILLINOIS
AG GROUP

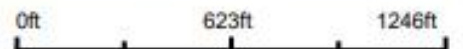
Maps Provided By:



© AgriData, Inc. 2023

www.AgriDataInc.com

Source: USGS 10 meter dem
Interval(ft): 3
Min: 694.6
Max: 757.7
Range: 63.1
Average: 724.5
Standard Deviation: 14.5 ft



9/18/2025

2-9N-2W
Montgomery County
Illinois

Boundary Center: 39° 15' 14.81, -89° 16' 35.05