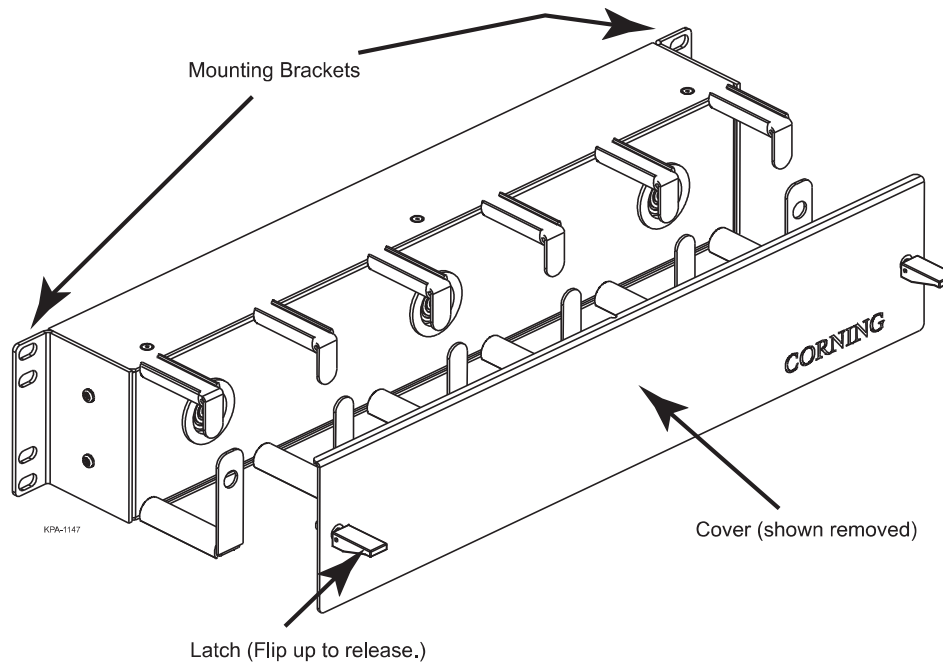




- Visit <http://www.corning.com/cablesystems/videos> for additional information and videos
- Visit www.corning.com/cablesystems/safety for full safety precautions



1. CARTON CONTENTS

- Jumper management panel
- Hardware Kit containing:
 - (8) 10-32 rack mounting screws
 - (4) 12-24 rack mounting screws

2. TOOLS REQUIRED

- Phillips-head screwdriver

3. ADDITIONAL MATERIALS (PURCHASED SEPARATELY)

- Closet Connector Housing (CCH-01U/-02U/-03U/-04U)
- Rear-mounted Closet Splice Housing (CJH-02U/-03U)
- Slack storage panel (CJS-03U)
- 23-inch rack adapter brackets (CDF-01U/-02U/-03U-23-BKT)
- 24-inch rack adapter brackets (CDF-01U/-02U/-03U-24-BKT)

4. MOUNT THE PANEL TO THE RACK

- To partially flush mount panel, remove the mounting brackets and reattach them with the mounting flange flipped from its original orientation.
- Position the panel directly above a Closet Connector Housing (CCH), directly above or below electronics, or in the same vertical race space in racks next to each other to create a jumper trough.
- Use appropriate Phillips-head rack mounting screws (or hardware provided by rack manufacturer), two per side to secure to the rack.

5. USING THE MANAGEMENT PANEL

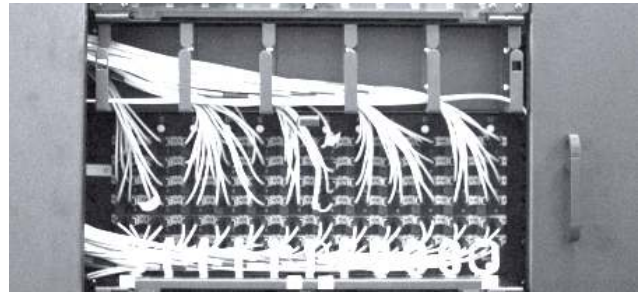
NOTE: Fiber optic cable is sensitive to excessive pulling, bending, and crushing forces. Consult the cable specification sheet for the cable you are installing. Do not bend the cable more sharply than the minimum recommended bend radius. Do not apply more pulling force to the cable than specified. Do not crush the cable or allow it to kink. Doing so may cause damage that can alter the transmission characteristics of the cable; the cable may have to be replaced.

For all applications

- Lift up on swell latches and remove cover.

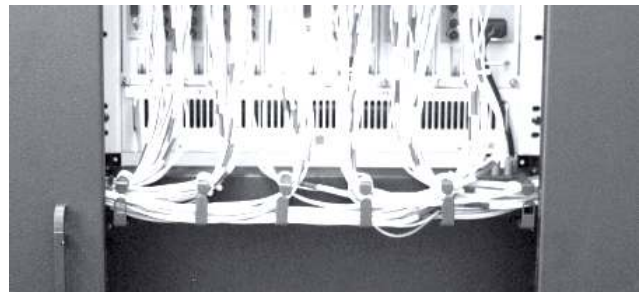
With a CCH

- Route the jumpers out the top of the connector housing and through the management panel to either side of the equipment rack.



With Electronics

- Route fibers from electronics above and/or below through the management panel to either side of the equipment rack.



As a jumper trough

- With multiple management panels mounted in the same rack space, lay in jumpers.

For all applications

- Replace cover and secure by flipping down the swell latches.

Corning Cable Systems LLC • PO Box 489 • Hickory, NC 28603-0489 USA
1-800-743-2671 • FAX +1-828-325-5060 • International +1-828-901-5000 • <http://www.corning.com/cablesystems>

Corning Cable Systems reserves the right to improve, enhance, and modify the features and specifications of Corning Cable Systems' products without prior notification. LANScape is a registered trademark of Corning Cable Brand, Inc. All trademarks are the properties of their respective owners. Corning Cable Systems is ISO 9001 certified.

© 1996, 1998, 2001, 2006, 2010 Corning Cable Systems. All rights reserved. Published in the USA.