

1. Feature

It is suitable for wall-mounting installation

It is IP65

It is suitable for duplex LC/SC adapters installation and usage

It is suitable for outdoor cable or indoor soft cable

Bulkhead panel with 2 SC/LC Duplex (SC Footprint)(F1-62DW-2)

The maximum capacity is 4 fibers for duplex LC, and 2 fibers for SC (F1-62DW-2)

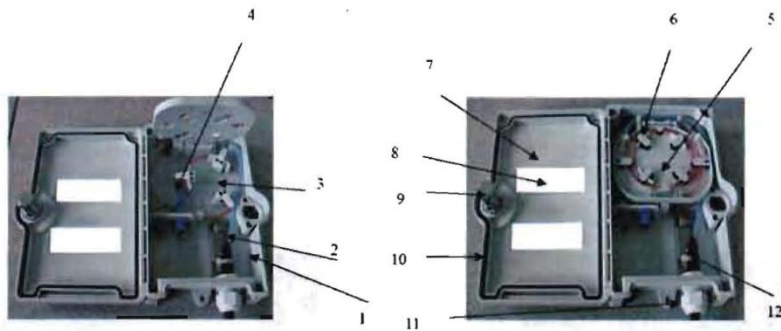
Can accommodate up to a 1x8 splitter (F1-62DW-3)

Max capacity 24 LC (using quad adapters) or 12 SC (using duplex adapters) (F1-62DW-3)

Size: 8.2" x 6" x 2" (F1-62DW-2) 10.2" x 7" x 2" (F1-62DW-3)

*Note: Cable or adapter not included

2. Internal Structure



1. Base, 2. Fixing cable parts, 3. For coiling cable, 4. For adapter fixing, 5. Splice protective sleeve, 6. Splice tray, 7. Cover, 8. For labeling, 9. Lock, 10. Door seal, 11. Cable gland, 12. Nylon tie

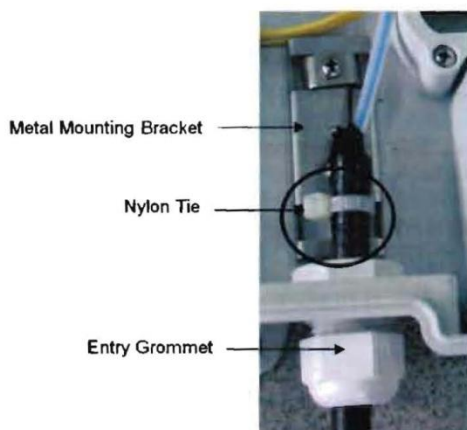
3. Usage

3.1 Open the outer package of box

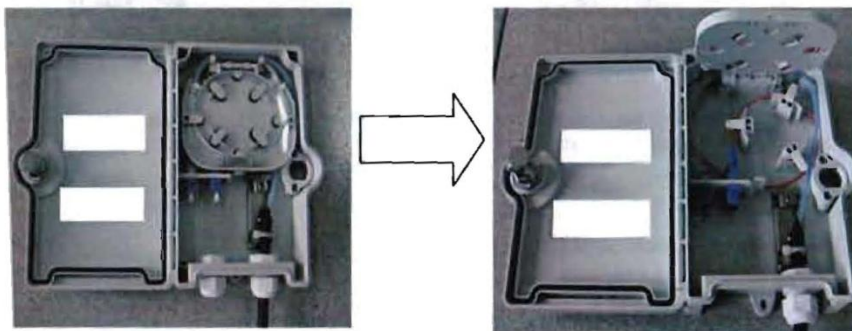
3.2 Using the key, open the box



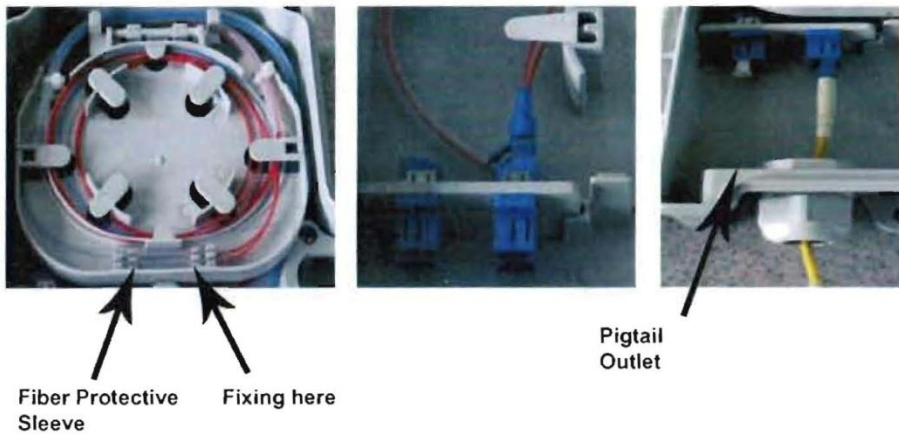
3 Measure 120 centimeters from the end of the cable and remove the outer jacket and Kevlar. For outdoor applications you may want to place a 1-inch piece of adhesive filled shrink tube at the end of the cable jacket so it overlaps the junction between the cable outer-jacket and the units. Pull the stripped cable through the entry grommet until the end of the cable jacket is approximately 2" inside the case. Use a Nylon-tie to attach the cable jacket end to the metal mounting bracket. Tighten down the entry grommet onto the cable jacket.



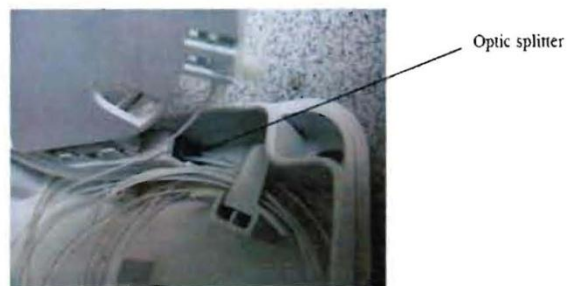
The built-in splice tray can be tilted up giving you access to the cable management bracket on the bulkhead panel.



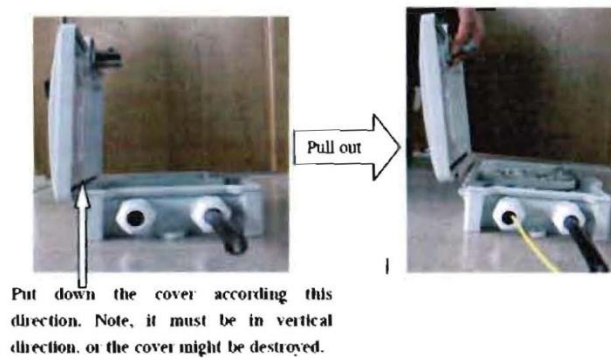
Place the mating sleeve bulkheads into the bulkhead panel. Connect your pigtails to the mating sleeves and bring the pigtail ends up to the splice tray. You can use Nylon tie wraps to secure the pigtails to the splice tray. Bring the end of your field fiber into the opposite side of the splice tray. The internal splice tray is designed to hold the mini splice protection sleeves which are included with the enclosure. pn#: **MCRO140CFD-50** or **MCRO125CFD-50**, also work with this splice tray. The patchcords or cable that you are mating to can be brought into the enclosure through the second entry grommet.



3.6 If you are using optical splitters, you would place them under the splice tray mount at the top of the enclosure. The splice tray mount can be unscrewed to give you access to this area.

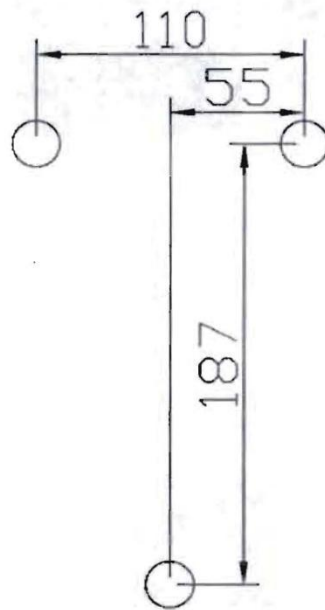


3.7 When you are finished with the fiber installation, swing down the splice tray and snap it into position. Place the clear protective cover over the splice tray.



4. Install construction

4.1 Drill the 3 holes on the wall for M4 plastic expansion screw as shown below.



4.2 Put M4 plastic expansion screws into holes.

4.3 Mount the box on the wall using 4×25 self-tapping screws. Cover the box, and lock it.