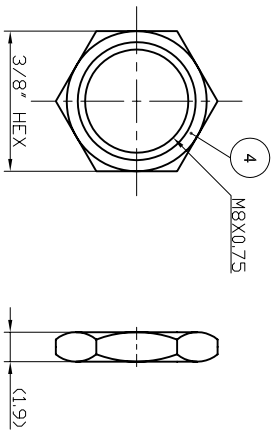
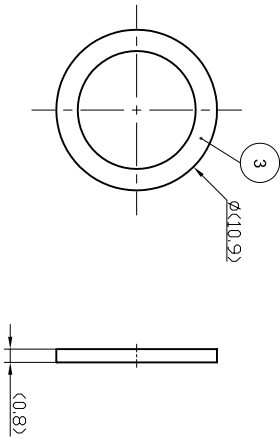
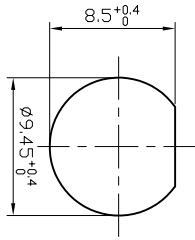
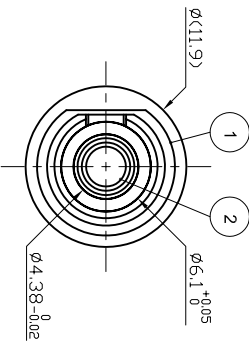
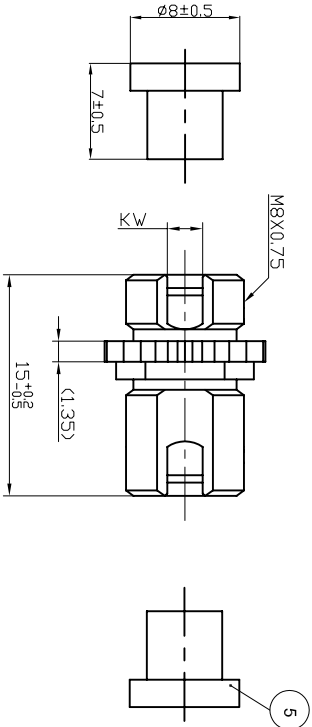


MOUNTING HOLE DIMENSIONS
(INFORMATIVE REFERENCE)



KW	Connection
2.05 ±0.02	APC
2.15 ±0.05	PC
2.4±0.2	PC



Notes:

- * All material complies with UL94 V0 and RoHS
- * Interface Dimensions Comply With IEC-61754-13 FC Adapter Connector Interface Mechanism.

UNLESS OTHERWISE SPECIFIED
DEBURRS ALL SHARP EDGES
DIMENSIONS ARE AFTER FINISH

TOLERANCES

X ±.1
XX ±.1
XXX ±.1
Z ±.1

Rev.	Revision note	Date	Revised	Approved
A	ER# SACI-0024	02/08/2008	D.G.	

Item#	Quantity	Part #	Title/Name, designation, material, dimension etc.
5	2		DUST CAP, TYPE
4	1		NUT, NICKEL PLATED BRASS
3	1		WASHER, NICKEL PLATED BRASS
2	1		SLEEVE, Zr or PB
1	1		HOUSING, NICKEL PLATED BRASS

Drawn By
Eng. Dept.

Checked By
D.Geldart

Approved by

All Dimensions in mm
Material: See Above

Date
02/08/2008

Scale
Free

Name:
253-XX3 (FC Round Adapter D)

EngR.No
SAC-DR-ENS-1485

Dwg.No
EN08-032

Rev.
A

Sheet
1/1



SENKO
Advanced Components