

OWNERS MANUAL

100X - 8X FIBER Inspection Scope

Mfr. Part Nos. 15LCD-9025,
14MU-9025, 14MTP-9025,
14MJ-9025

U.S. Patent #5,731,893

**Please read instructions
carefully before operating
your new instrument!**

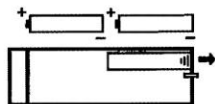
**CAUTION - DO NOT VIEW
ACTIVE FIBER WITH
THIS INSTRUMENT!**

PREPARATION

INSTALLING BATTERIES

Use two AA batteries to properly power your TrueView fiber scope.

- Remove the battery housing cover by placing a slight amount of thumb pressure near the viewing end of the scope body, sliding in the direction of the arrow as shown below.



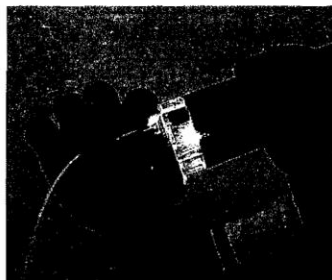
- Insert batteries and replace cover.

OPERATION

USING THE 100X ADJUSTABLE SCOPE

The 100X adjustable magnifier is configured with a field aligning aluminum head. (See field alignment section of this manual)

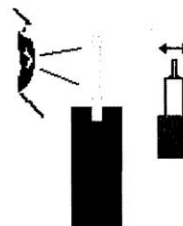
- To view the ferrule end of an MT or LC fiber connector, slide the ferrule onto the inspection port. It may be necessary to hold the connector in place for proper viewing.
- Viewing the image can be accomplished by focusing with the thumb-wheel adjustment knob. First switch on the internal light source. (In bright room lighting, the internal light source may not be necessary.) Swivel the top aluminum plate from one side to another to capture one or more ferrules for viewing.



- To view other types of connectors such as the ST, SC, and SMA, it will be necessary to purchase the desired adapter from your supplier. To re-configure your scope for other connector styles, either snap off existing head assembly (see section 4) or unscrew the threaded knurl from the aluminum plate. Thread in or snap on the replacement.

USING THE 8X RETRACTABLE CROWN INSPECTION LOUPE

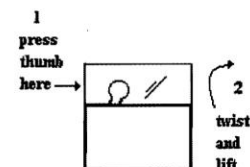
- To perform crown inspections in preparation for fiber cleaving or polishing simply pull out the 8X loupe from the viewing end of the scope and hold within approximately 2 inches of your eye. Maximum magnification is obtained by moving the ferrule back and forth on the opposite side of the lens.



REPLACING THE BULB OR ADDING OTHER SCOPE HEAD ASSEMBLIES

**FOLLOW THESE EASY STEPS
TO REPLACE THE BULB OR
ADD OPTIONAL HEAD
ASSEMBLIES.**

- Hold scope base unit in one hand with your thumb resting on the bulb side of the clear plastic lens.
- Apply thumb pressure against the plastic lens until it pops loose (about 1/4 inch of lateral movement can be expected).
- Lift off the plastic lens by applying a two finger prying motion on the broad sides of the lens.
- Unscrew old bulb and replace with a new like part (available at your local hardware or electronics store). If changing the head assembly, simply snap on the new head and re-align the plate as indicated in step 5 of this manual.
- Reverse the steps above to restore scope to original configuration.



5

FIELD ALIGNMENT OF ALUMINUM HEAD

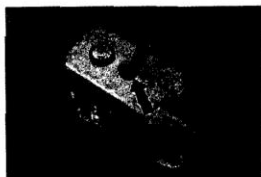
The only tool needed to perform aligning adjustment is a small electronic screw driver.

ADJUSTMENT PROCEDURE

- There is no need to remove pivot block for adjustment.
- Insert connector in inspection port.
- Loosen screw inside the access hole on top of the moveable aluminum plate head piece.



DUAL LC CONNECTOR HEAD



MU, MT & MT-RJ CONNECTOR HEAD

- Align image and hold plate and clear lens together while tightening the hold-down screw.

6

NOTE: Be aware that image will move in the opposite direction that pressure is applied.

CAUTION: Do not over-tighten hold down screw.

CARE AND STORAGE

Store your fiber inspection scope in appropriate ambient temperatures. Extreme temperatures can shorten the life of your instrument.

Dust and dirt can cause premature wear on your scope. Be sure to gently clean the scope with a lint free cloth after each use.

When not using your scope, be sure to store it in a protected case to avoid lens damage from sun, dust, dirt, or moisture.

Do not clean any portion of your scope with a harsh chemical, alcohol or solvent. Use a dry lint free cloth or electronics grade canned compressed air.

CAUTION: Always remove all epoxy from connector ferrules before inserting into scope.

7

WARRANTY

Your TrueView scope is factory warranted for a period of one year from date of purchase, whether purchased as a single unit or in an installation kit. During this period, we will repair or replace any unit or sub-component that is factory defective at our expense. We will also provide free "direct-drop" shipment to the scope owner. This warranty gives you specific rights which may vary depending on your location. Our policy is:

Complete Client Satisfaction

Dated proof of purchase required.

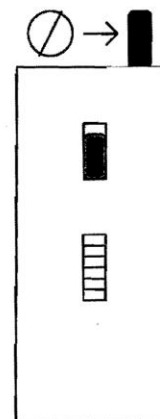
Other TrueView Products

- Angle plate adapter for enhanced (200X - 400X) effective inspection capabilities.
- SMA and Biconic connector type adapters. (Easy change-out design.)
- Pocket Source, LAN continuity tester.
- Bare fiber Splice View Adapter; highly recommended for no-polish crimp style connectors, pre-fusion and mechanical splice fiber inspection.
- Polishing plates, pads
- VF-45 Viewing Adapter
- Polishing pucks/fixtures
- Polishing film

8

ADDITIONAL INFORMATION

CAUTION:



Do not apply thumb pressure to extended objective while the acrylic head piece is removed. Doing so will cause damage to the scope.