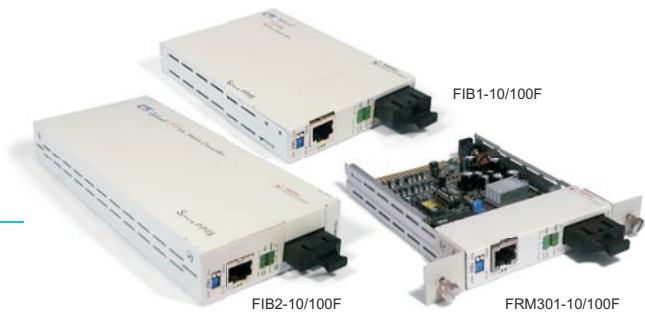




Managed Platform

Stand-alone Fast Ethernet to Fiber Media Converter

FRM301-10/100F FIB1-10/100F, FIB2-10/100F



FRM301-10/100F, FIB1-10/100F, FIB2-10/100F series are Fast Ethernet 10/100Base-TX to 100Base-FX manageable stand-alone media converters, which give you the options to choose from the most popular fiber cabling connectors, ST, SC, or FC. Both multi-mode and single mode converter models are available as well as BiDi which allows bi-directional transmissions using only a single fiber cable. When auto-negotiation is selected, these units will automatically tailor themselves to convert both half-duplex and full-duplex signals, depending on your specific network needs. LED indicators signal the power status of the converter, UTP port speed, Link, and duplex status, FX port Link and duplex status.

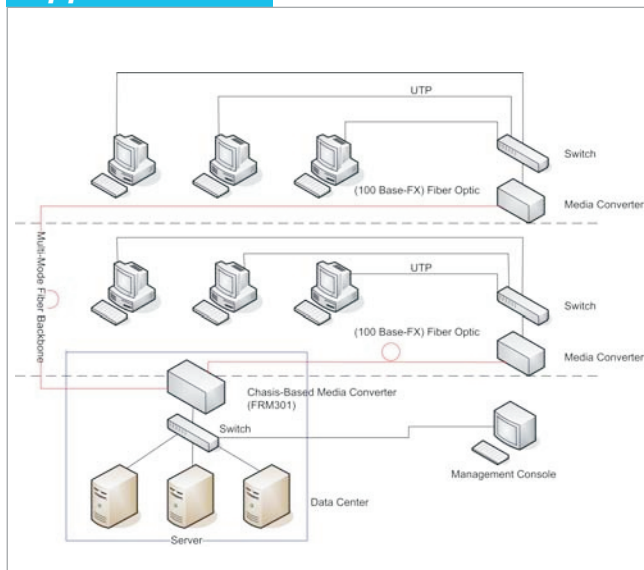
Features

- 10/100Base-TX to 100Base-FX Converter
- Auto-Negotiation or forced mode
- Auto MDI/MDIX
- Forward 1600 bytes (Max.) packets
- Supports Q in Q double tagged frame transparent
- Supports IEEE 802.1q Tag VLAN pass thru
- Supports local monitor and configure by the SNMP manager.
- Support flow control (Pause)
- Supports Link Fault Pass through (LFP)
- Supports Loop Back Test
- Auto Laser Shutdown (ALS)

Specifications

Ports	Connector : 1x9 (SC, ST, FC)
Optical Interface :	Data rate : 100Mbps
	Duplex mode : Full duplex
	Cable type : MM 62.2/125µm, 50/125µm. SM 9/125µm
Distance :	MM 2km, SM 15/30/50/80/120km, WDM 20/40/60/80km
	Wavelength: 1310nm, 1550nm
	Electrical Interface :
Data rate :	10Mbps, 100Mbps
	Duplex mode: Half / Full duplex
Cable type :	10Base-T Cat.3, 4, 5, UTP, 100Base-TX Cat.5, 5e
	Distance: 100 meters
Standard	IEEE 802.3, IEEE 802.3u
LEDs	Power, FX Link, FX Duplex, TX SPD, TX Link, TX Duplex
Power	FIB1:DC In 9V, FIB2:AC 100 ~ 240V/ DC 24 ~ 72V
Power Consumption	< 4W
Dimensions (D x W x H)mm	FRM301/FIB1: 123 x 86 x 20mm
	FIB2: 192 x 86 x 30mm
Weight	FRM301: 290g, FIB1: 340g, FIB2: 550g
Temperature	0~50°C (Operating) ,0~70°C (Storage)
Humidity	10~90% non-condensing
Certification	CE, FCC, RoHS
MTBF	65,000 h (25°C)

Application



Ordering Information

- **FRM301-10/100F** 10/100Base-TX to 100Base-FX slide-in card
- **FIB1-10/100F** 10/100Base-TX to 100Base-FX stand-alone converter
- **FIB2-10/100F** 10/100Base-TX to 100Base-FX AC or DC power built-in