

## Managed Family

### Slide-in card & stand-alone Gigabit Ethernet fiber converter

# FRM301-1000ES, FIB1-1000ES



The FRM301-1000ES and FIB1-1000ES are Gigabit Ethernet 10/100/1000Base-T to 1000Base-SX/LX SFP. They are managed (when installed in FRM301 with management) or non-managed stand-alone media converters, which give you the options to choose from a wide range of industry standard SFP modules with LC connectors. SFPs in multi-mode and single mode models are available as well as BiDi which allows bi-directional transmissions using only a single fiber cable. When auto-negotiation is selected, these units will automatically tailor themselves to convert both half-duplex and full-duplex signals, depending on your specific network needs. LED indicators signal the power status of the converter, UTP port speed, Link, and duplex status, FX port Link and duplex status.

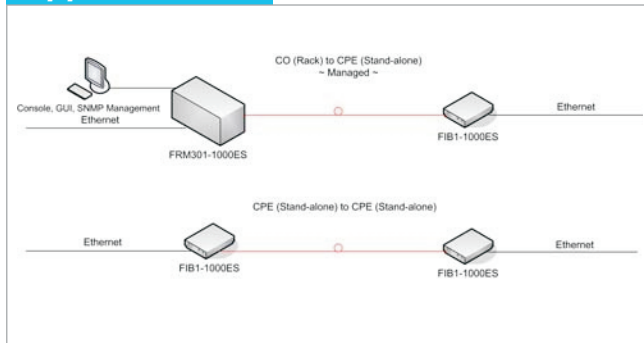
### Features

- 10/100/1000Base-T to 1000Base-SX/LX SFP
- Network management via terminal, or SNMP in FRM301-CH chassis
- Auto-negotiation or forced mode
- Auto MDI/MDIX
- Forward 1632 bytes (Max.) packets
- Supports Flow control (Pause)
- Support Link Fault Pass through (LFP) function
- Auto Laser Shutdown (ALS)

### Specifications

Ports	Connector : SFP LC
Optical Interface :	Data rate : 1000Mbps
	Duplex mode : Full duplex
	Cable type : MM 62.2/125µm, 50/125µm. SM 9/125µm
Distance :	MM 2km, SM 15/30/50/80/120km, WDM 20/40/60/80km
	Wavelength: 850, 1310, 1550nm
	Electrical Interface :
Data rate :	10Mbps, 100Mbps, 1000Mbps
Duplex mode:	Half / Full duplex
Cable type :	10Base-T Cat.3, 4, 5, UTP, 100Base-TX Cat.5, 5e, 1000Base-T Cat. 5e or higher
	Distance: 100 meters
	Standard
LEDs	Power, FX-Link, TX-Link, TX-SPD, TX-Duplex, LLF
Power	DC In 12V
Power Consumption	< 5W
Dimensions (D x W x H)mm	FRM301/FIB1: 123 x 86 x 20mm
Weight	FRM301: 290g, FIB1:340g
Temperature	0~50°C (Operating) ,0~70°C (Storage)
Humidity	10~90% non-condensing
Certification	CE, FCC, LVD, RoHS
MTBF	65,000 h (25°C)

### Application



### Ordering Information

- **FRM301-1000ES** 10/100/1000Base-TX to 1000Base-FX SFP slide-in card
- **FIB1-1000ES** 10/100/1000Base-TX to 1000Base-FX SFP stand-alone converter