



VDSL2 Bridge LAN Extender with 4-Port 10/100Base-TX Ethernet VDTU2A-304



The VDTU2A-304 VDSL2 LAN Extender is a long reach Ethernet extender with four Ethernet ports and two phone jacks, in which one is for VDSL2 connection and the other is for POTS (Plain Old Telephone Service) connection. It has built-in POTS splitter to share the existing phone line with POTS eliminating the need for replacing the existing copper wiring. It is ideal for use as an Ethernet extender to an existing Ethernet network.

Well accommodating VDSL2 (Very-high-data-rate Digital Subscribe Loop) technology to extends Ethernet service over single-pair phone line, VDTU2A-304 can reach up to 100/75 Mbps bandwidth (line rate) within 300M or 40/10 Mbps bandwidth (line rate) for 1 Km long-range connections. By providing ultra-high speed, VDTU2A-304 LAN Extender makes your telephone line achieve its best performance ever. It has the advantage of minimum installation time (simply as plug-n-play) and minimum expense by allowing video streaming and data to share the same telephone pair without interference.

VDTU2A-304 delivers everything needed to quickly deploy a high-speed IP-based network for providing high-speed Internet access, video-on demand services and voice services. The resulting compact, cost-effective form factor offers systems integrators, small business owners an attractive long reach Ethernet solution.

Features

- Cost effective bridge function to connect two Ethernet LAN
- Easy installation via simple plug-and-play
- Selectable CPE and CO mode
Two working modes are built in the same unit, which keep the flexibility of installation and easy provision of service but lower inventory of service provider.
- Selectable fast and interleaved mode:
Fast mode guarantees a minimum end to end latency less than 1 mS. Interleaved mode provides impulse noises protection for any impulse noise with duration less than 250uS. Interleaved mode has a maximum end to end latency of 10mS.
- Selectable target band plan:
VDSL2 defines multiple band plans and configuration modes to allow asymmetric and symmetric services in same binder for data transmission.
Symmetric is selected that provides better downstream performance. Asymmetric is selected that provides better upstream performance.
- Selectable target SNR margin:
It has the ability to select fixed SNR margin value on 9 dB or 6db. The systems will maintain the SNR margin at their value across all usable loop length. The higher SNR value gets better line quality, but lower performance.

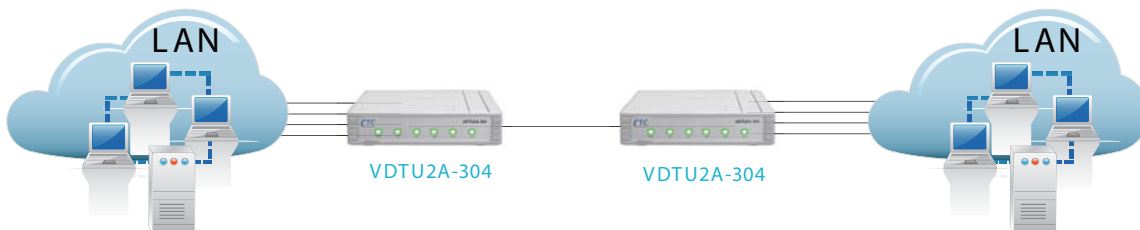
VDSL2 standards

Connections

Indicators

Physical/Electrical

- Compliant with ITU VDSL2 standard G.993.2 Annex A, Annex B and Annex C
- Support VDSL2 profile: 8a, 8b, 8c, 8d, 12a, 12b and 17a
- Band plan profile: symmetric (Plan 997) and asymmetric (Plan998)
- Support fast and interleaved mode
- Target SNR Margin: 6dB and 9dB
- Built-in POTS splitter to share voice and data
- Four RJ-45 connectors for Ethernet 10/100Mbps ports with auto MDX/MDIX
- One RJ-11 connectors for VDSL2 port,
- One RJ-11 connection for POTS connection
- LED : PWR
WAN(VDSL2) : LNK, ACT and ALM
LAN (Ethernet) : 1,2,3,4 LNK/ ACT
- Power: 100-240VAC (via power adapter)
- Power consumption: 9 watts maximum.
- Temperature: 0-45°C
- Humidity: 0%-95%RH (non-condensing)



Ordering Information

- VDTU2A-304/EU: VDSL2 LAN Extender with 4-port 10/100TX Ethernet w/ splitter 150 ohm(EU)
- VDTU2A-304/US: VDSL2 LAN Extender with 4-port 10/100TX Ethernet w/ splitter 600 ohm(US)