

Like

Share

413 people like this.

Sign Up to

THE ON-LINE COMMUNITY



FOR PONTIAC VIBE ENTHUSIASTS

**genVibe.com**

The Online Community for Pontiac Vibe Enthusiasts

Quick links

FAQ

Register

Login

Board index

< Maintenance and Care

< Tech Info & Do-It-Yourself Info

Door Molding Reattached

Post Reply

3 posts • Page 1 of 1

Door Molding Reattached

by vibrologist » Mon Sep 07, 2015 7:12 am

The Vibe's passenger side door cladding gets easily dislodged. When you park curbside and a passenger opens the door wide and plops in the seat the end of the door can bite into the grass. This passenger will tug on the door to close it and rip out the rear end of the door cladding in the process. 🙄

To go from here 🙄 to there 😊 takes few \$\$ and about 60 minutes.

Get 2 packs of Balkamp 665-2849 fasteners at the NAPA Auto Parts Store. You need 9 but they come in packs of 7. I think this is a well planned coincidence.

While there, pick up a roll of 3M Super Strength Molding Tape.

Pull the molding completely off the door with your hands. Start at the loose end alternating on the bottom and top edge, working your way to the front.

Using combination pliers grab the fasteners that remain in the door. Wiggle and tug to pull them out. They will break in the process.

Remove the old molding tape from the door. I put on a mechanic's leather glove and rubbed it off with my thumb.


Remove the old tape from the molding. The gloved thumb should work here too. However, I used a chisel. I also rubbed some dust into the gooey stuff so it looses its adhesive power.

Wash the door and the molding. Wipe down the surfaces where the molding tape will be placed with rubbing alcohol.

Put the fasteners into the slots.

Lay down the molding tape and leave the cover film in place. The tape goes on the top edge and at either end. There is no tape at the bottom.

Check that the fasteners line up with the holes in the door. Adjust if needed.



vibrologist

Posts: 1144

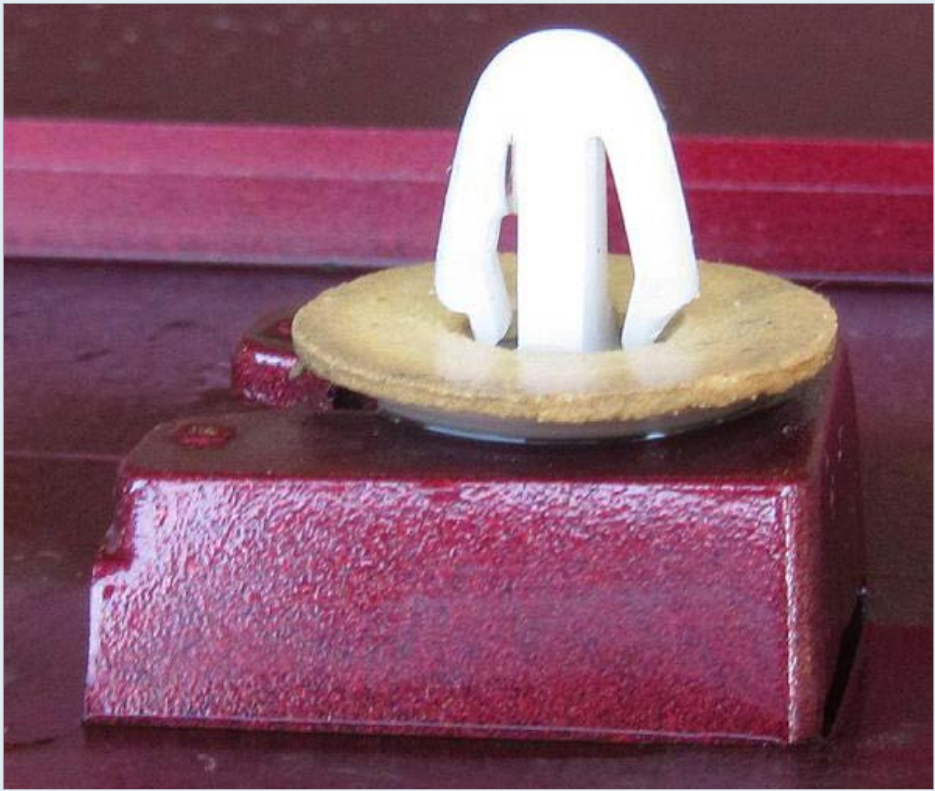
Joined: Sat May 10, 2014 8:24 am

Location: Iowa

Remove the cover film from the molding tape, line up the molding with the holes in the door and pop it into place. Go around the perimeter and press the molding to the door to make sure the tape grabs everywhere and all fasteners are seated.



Vibe door and cladding cropped.jpg (110.35 KiB) Viewed 471 times



Vibe door cladding fastener.jpg (60.96 KiB) Viewed 471 times



Vibe door cladding supplies.jpg (118.67 KiB) Viewed 471 times

Last edited by [vibrologist](#) on Mon Sep 07, 2015 7:33 am, edited 2 times in total.

Vibrologist
'05 Vibe

"It is important to know the difference between 'accurate' and 'precise' even if you are neither!"

<http://forums.genvibe.com/phpBB3/viewtopic.php?f=30&t=43476>

Re: Door Molding Reattached

by [vibrologist](#) » Mon Sep 07, 2015 7:17 am

And two more pictures:



Vibe door cladding with tape and fasteners.jpg (72.97 KiB) Viewed 470 times

“



[vibrologist](#)
Posts: 1144
Joined: Sat May 10, 2014 8:24 am
Location: Iowa



Vibe door cladding, done.jpg (43.86 KiB) Viewed 470 times

Vibrologist
'05 Vibe

"It is important to know the difference between 'accurate' and 'precise' even if you are neither!"

<http://forums.genvibe.com/phpBB3/viewtopic.php?f=30&t=43476>

Re: Door Molding Reattached

by **trb** » Mon Sep 07, 2015 9:40 am

Looks good! I need to work on my driver's door as it came loose on the outer corner. And to top it off, my son's car's rear fender piece got scraped to heck somehow, so now I have to work on it too. Thanks for the part # and info.

Thomas
the "Mustang Guy"
1987 5.0 LX bought new 3/31/87. 306K mile former daily driver
2016 Mustang GT - current daily
2003 Neptune Vibe GT - prior daily w/233K
2010 Red Vibe GT - former daily - RIP 6/16/14
2006 Platinum Vibe - son's car



trb
Posts: 1651
Joined: Thu May 08, 2008 4:06 am
Location: Houston, TX

Display posts from previous: All posts Sort by Post time Ascending

Post Reply

3 posts • Page 1 of 1

Return to "Tech Info & Do-It-Yourself Info"

Jump to

WHO IS ONLINE

Users browsing this forum: No registered users and 4 guests

Board index

Contact us The team Delete all board cookies All times are UTC-08:00