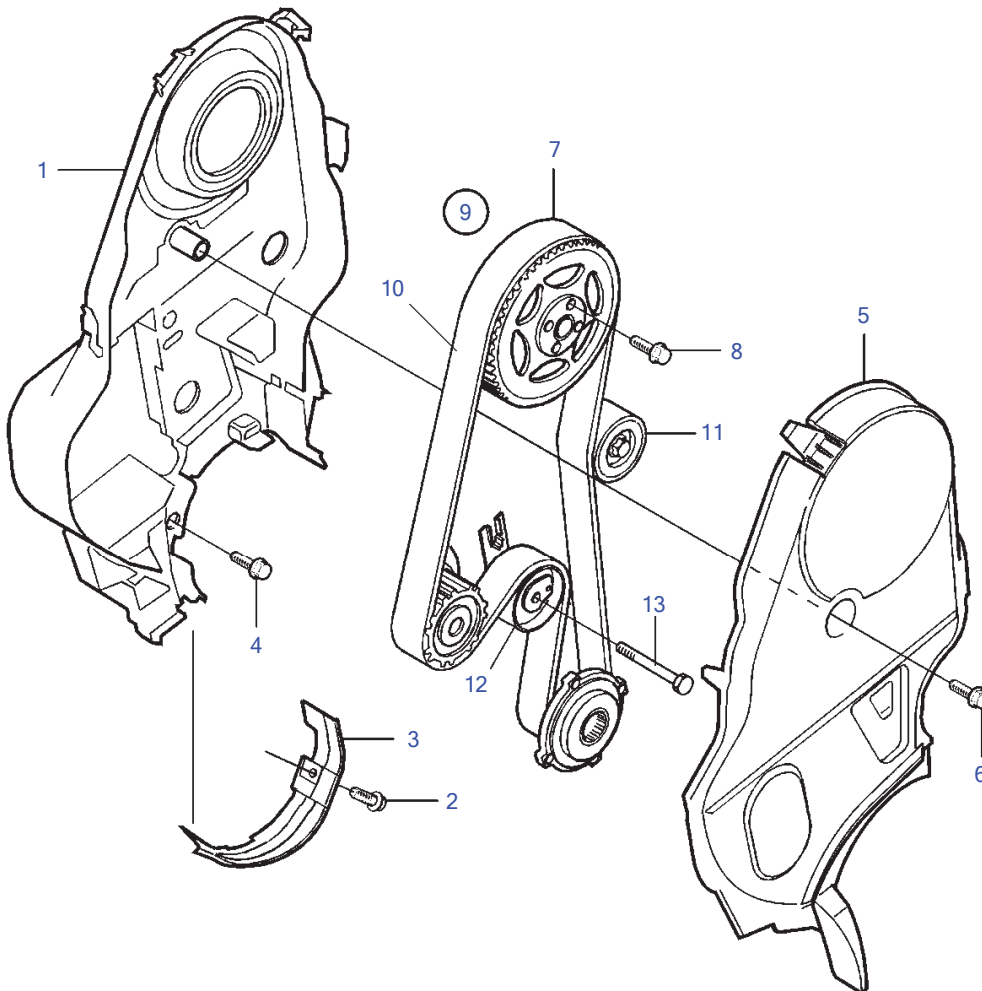


D3-110I-A, D3-110I-B, D3-110I-C, D3-130A-A, D3-130I-A, D3-130A-B, D3-130I-B, D3-130A-C, D3-130I-C, D3-160A-A, D3-160I-A, D3-160A-B, D3-160I-B, D3-160A-C, D3-160I-C, D3-190A-B, D3-190I-B, D3-190A-C, D3-190I-C



22729

D3-110I-A, D3-110I-B, D3-110I-C, D3-130A-A, D3-130I-A, D3-130A-B, D3-130I-B, D3-130A-C, D3-130I-C, D3-160A-A, D3-160I-A, D3-160A-B, D3-160I-B, D3-160A-C, D3-160I-C, D3-190A-B, D3-190I-B, D3-190A-C, D3-190I-C

REF	PART NO.	QTY	DESCRIPTION	NOTES
1	8631626	1	Belt protector	
2	981311	2	Flange screw	
3	30731907	1	Belt protector	
4	982384	4	Screw	M6x11,5mm
5	30731283	1	Belt protector	
6	981312	1	Flange screw	M7x48,5mm
7	8631554	1	Gear pulley	Replaced by gear pulley 8642804 and 4 pcs screw 985373.
	8642804	1	Gear pulley	
8	968881	4	Flange screw	M8x25mm
	985373	4	Screw	For 8642804
9	31258305	1	Tooth belt	
10	31258306	1	* Tooth belt	
11	8692561	1	* Idler pulley	
12	30731774	1	* Tensioner	
13	985806	1	Hexagon screw	M8x53,5mm