

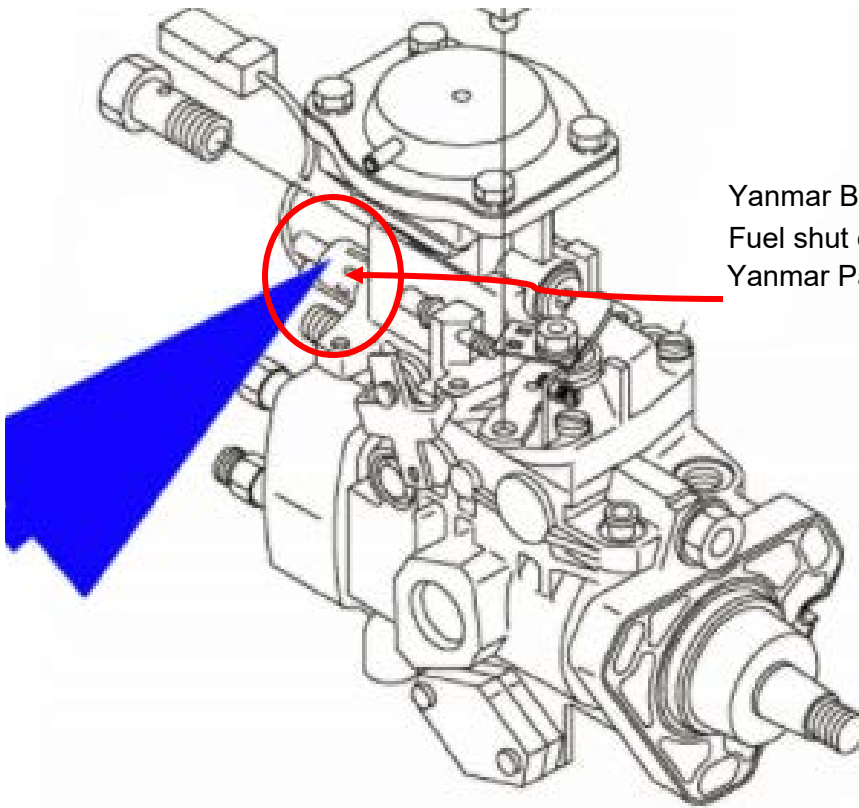
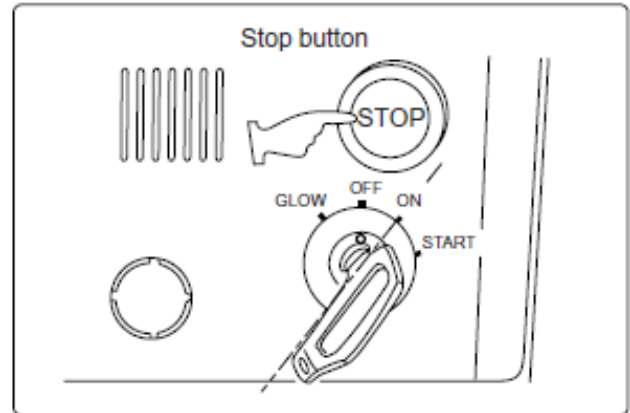
Yanmar Stop Solenoid

(4) Stop button

The engine is stopped by pushing the stop button on the right of the control panel.

When the stop button is pushed, the solenoid valve on the fuel injection pump works to cut off the fuel supply and stop the engine.

Continue to push the stop button until the engine has come to a complete stop.



Yanmar Bosch/Zexel VE Fuel Injection Pump
Fuel shut off solenoid
Yanmar Part Number: 119171-67200

