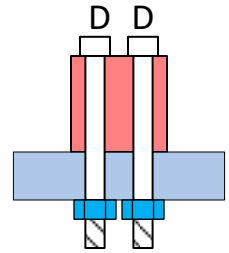


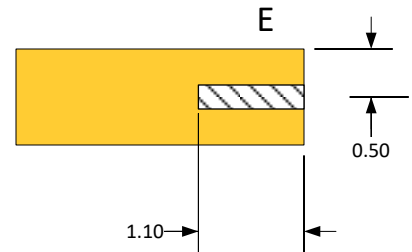
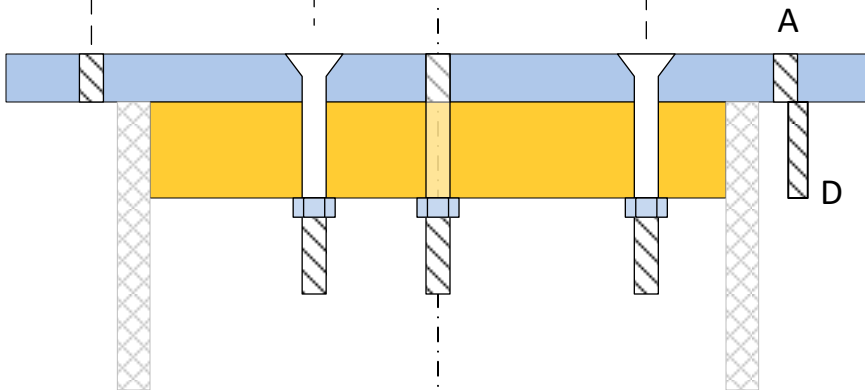
- A ¼-20 threaded through top plate only. Radius 3.615
- A2 ¼-20 threaded through top plate only. Radius 2.615
- B ¼ smooth through both plates, counter-sunk
- C ¼ smooth through both plates
- D 13/64 hole for 10-24 screw, 3.75 radius, 0.5 spacing
- E ¼-20 threaded, depth 1.1
3 places to match pier



>> Not enough space for washers !!

How much tilt for single ¼-20 ?

Cup bottom slightly ?



Moved A2 to 2 5/8 radius

Pier Top Adapter for AP-900
21 Sept 2019
D L Fischer