



# FEMA



## FEMA P-154, *Rapid Visual Screening of Buildings for Potential Seismic Hazards*

### WEB-BASED TRAINING DESCRIPTION

Training on the Third Edition of FEMA P-154, *Rapid Visual Screening of Buildings for Potential Seismic Hazards*, provides instruction on how to identify potentially hazardous buildings before earthquakes occur. The web-based training covers methods and processes that enable personnel to rapidly identify, inventory, and screen local buildings according to their expected safety and usability during and after earthquakes. Local officials can use these data to plan and prioritize further engineering and vulnerability analysis, emergency-response needs, and mitigation projects. This web-based training is based on the third edition of the document published by FEMA in January 2015. Although some of the material remain unchanged from the Second Edition FEMA P-154 (published in 2002), the *Third Edition* provides major enhancements.

### TARGET AUDIENCE

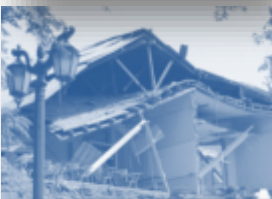
The target audience for this web-based training includes building officials, engineers, architects, building owners, emergency managers, risk analysts, and other interested citizens and volunteers.

### GENERAL INFORMATION

**Time:** 1pm-5pm (Pacific)  
**Date:** Thursday, September 24, 2020  
**Location:** Online (See “*How to Register*” section below)  
**Instructor:** Keith Porter, Research Professor, University of Colorado Boulder, and Principal, SPA Risk LLC  
**Materials:** FEMA P-154 report, *Rapid Visual Screening of Buildings for Potential Seismic Hazards, Third Edition* (in PDF) and; FEMA P-155 report, *Rapid Visual Screening of Buildings for Potential Seismic Hazards: Supporting Documentation, Third Edition* (in PDF).

### HOW TO REGISTER

To **register** for this free web-based training, please follow this link:  
<https://attendee.gotowebinar.com/register/7677251288985703440>



This web-based training is supported by National Earthquake Hazards Reduction Program (NEHRP) National Earthquake Technical Assistance Program (NETAP). For more information visit:  
<http://www.fema.gov/earthquake-training/national-earthquake-technical-assistance-program>