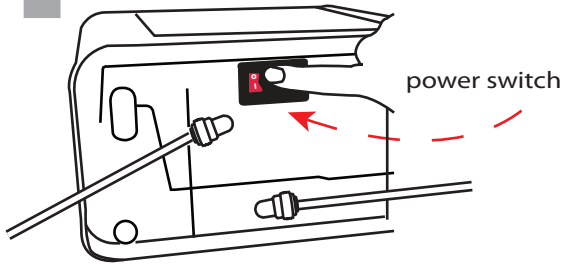


# 1

### Turn power off

Turn off power to the ionizer by pressing the circle side of the power switch located at the bottom of the ionizer.



# 2

### Remove cover

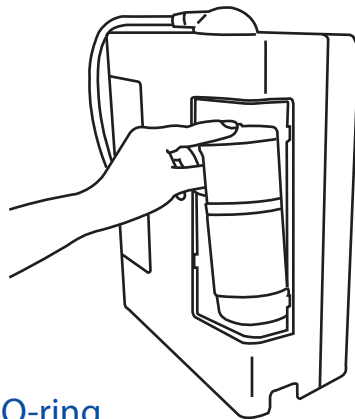
Remove the #2 filter cover located on the right side when looking at the back of the ionizer.



# 3

### Remove #2 filter

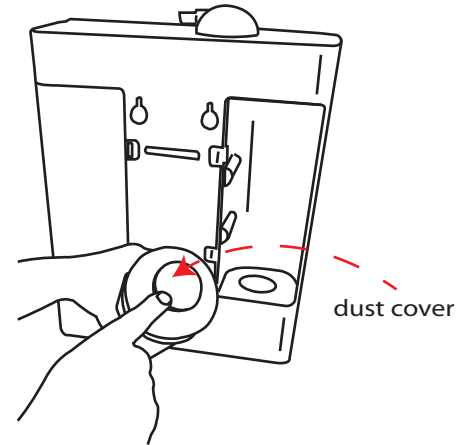
Remove the #2 filter by twisting the filter and then lifting it out of the ionizer.



# 4

### Prepare scaling filter

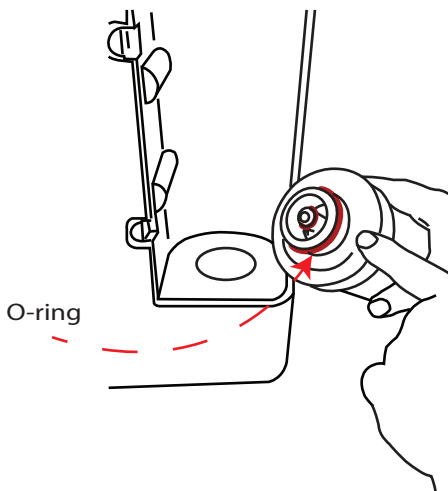
Remove the clear plastic packaging and dust cover from the bottom of the scaling filter.



# 5

### Lubricate O-ring

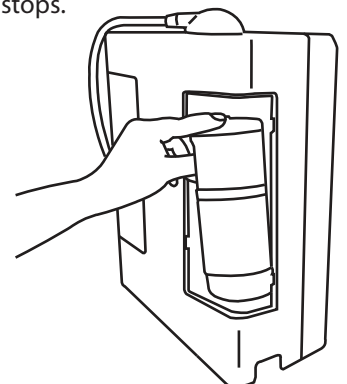
Before installing the filter, lube up the large outer O-ring with either olive oil or vaseline. Line up the 2 tabs on the filter to the filter base in the ionizer.



# 6

### Insert Scaling filter

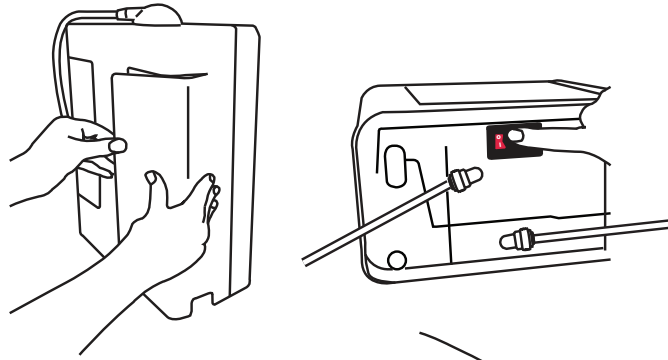
Once you have aligned the tabs on the filter with the ionizer, press down and twist the filter until it stops.



# 7

## Replace cover

Replace the cover and turn the power switch back on.

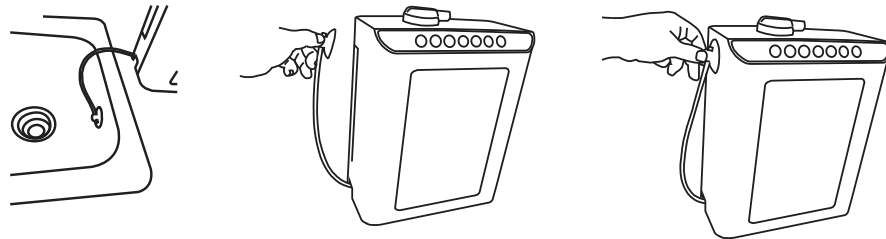


# 8

## Let ionizer sit

Apply water pressure, press the "ON/OFF" button and produce water for 15 seconds. Press the "ON/OFF" button to stop extraction.

For counter top applications, remove the acidic tube from the sink and fasten it to the ionizer ensuring that the cleaning solution will not leak out of the ionizer.

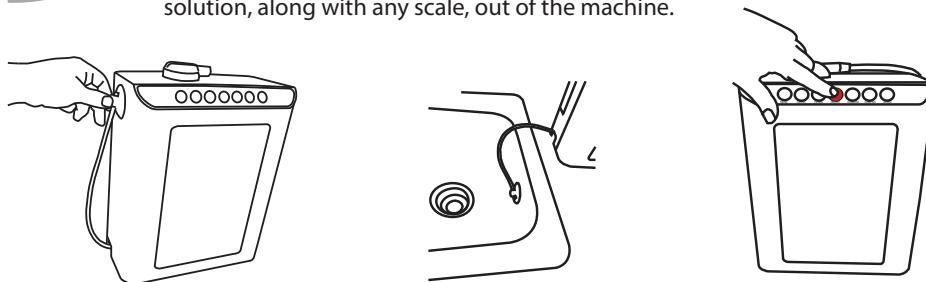


Now let the unit sit for a minimum of 6-8 hours or for best results, overnight. The unit is full of a citric acid solution that will take many hours to break down the scale that has built up in your unit. Letting it sit in the unit for over a 6 hour period is okay and will not harm the ionizer.

# 9

## A few more steps until finished!

Once the unit has sat for the recommended time, (leaving scaling filter in place) unfasten the acidic tube from the ionizer and place it back in the sink (for counter top applications) and then press the center "ON/OFF" button. Let the unit extract water for 3-5 minutes. This step will purge all of the citric solution, along with any scale, out of the machine.



**The cleaning process is now complete. Remove the scaling filter and throw it away or recycle it and reinstall a #2 filter.**