

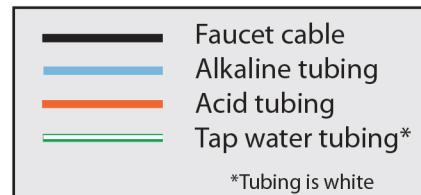
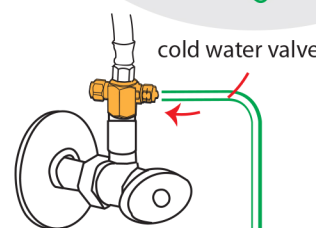
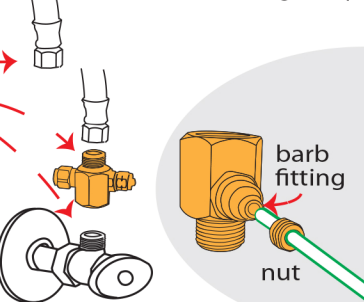
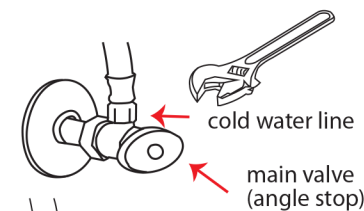
1 Cold Water Connect

- Find the cold water supply under sink
- Turn the **main valve (angle stop)** off
- Remove the cold water line from the **main valve** by using a wrench

- Totally disconnect the **cold water line**

- Add Teflon tape to the male threads on both the **cold water connect** and **main valve**
- Connect the **cold water connect** to the **main valve**
- Then connect the cold water line to the **cold water connect**
- Tighten both with a wrench

- Remove the small nut from the **cold water connect**
- Slide the tubing through it
- Connect the 1/4" tubing on to the barb fitting on the **cold water connect**
- Tighten the nut back on with a wrench
- Open the **cold water connect valve**



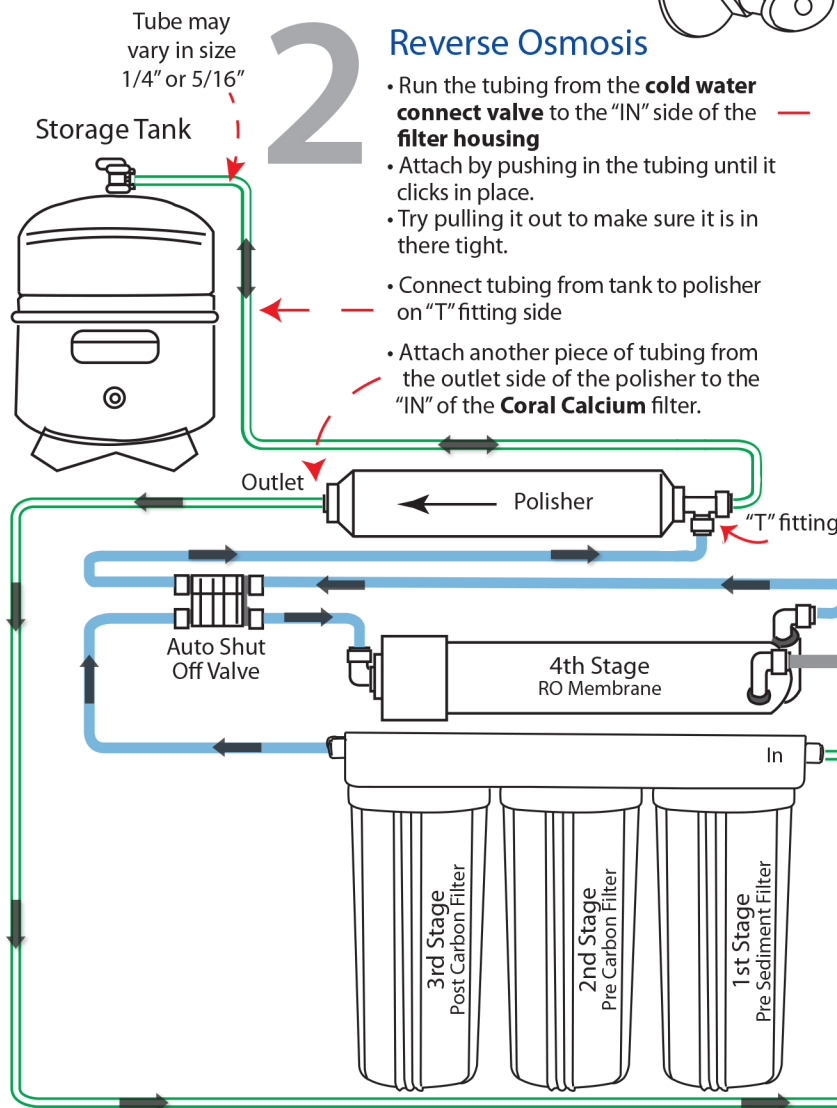
*Use a flat head screw driver to turn on the **Cold Water Connect** and adjust the pressure

2 Reverse Osmosis

- Run the tubing from the **cold water connect valve** to the "IN" side of the **filter housing**
- Attach by pushing in the tubing until it clicks in place.
- Try pulling it out to make sure it is in there tight.

- Connect tubing from tank to polisher on "T" fitting side

- Attach another piece of tubing from the outlet side of the polisher to the "IN" of the **Coral Calcium** filter.



3 Coral Calcium

- Attach another piece of tubing from the "OUT" side of the Coral Calcium filter which will then lead to the bottom of the ionizer

Flow Restrictor Drain Water

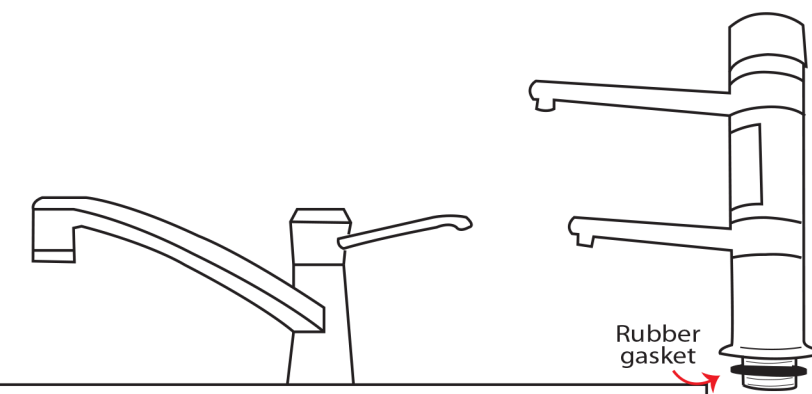
Coral Calcium filter

In Out
(Flush out pre filters)

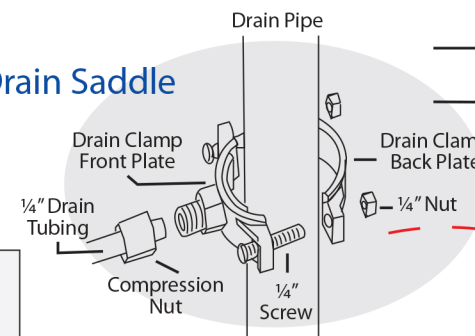
NOTE:
Run 2-3 gallons of water through the pre-filters before you connect them to the ionizer.

5 Faucet

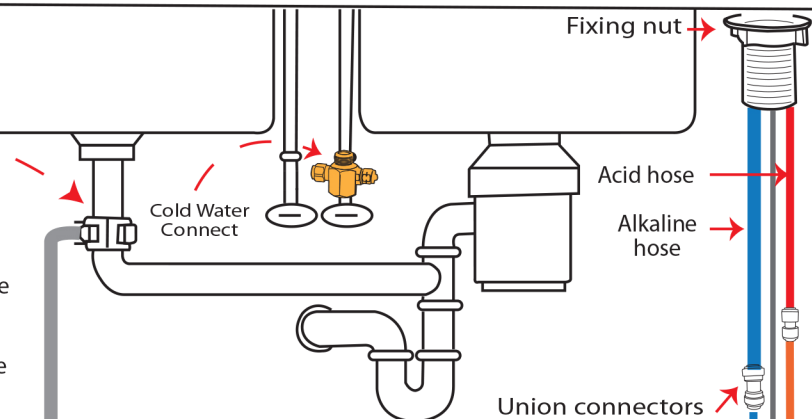
- Make sure the counter hole for the faucet is 1 3/8"
- Install the **faucet** with the black rubber gasket under the faucet base
- Tighten fixing nut from under the sink
- Using a union connector, connect the red acid hose from the **faucet** to the orange **acid tubing**
- Run the other end of the orange **acid tubing** to the Acidic water "outlet" on the bottom of the machine
- Using another union connector, connect the blue alkaline hose from the faucet to the blue alkaline tubing.
- Connect the **faucet patch cable** to the **faucet**



6 RO Drain Saddle



- Mount **Drain Saddle** on drain pipe with supplied hardware.
- Drill 1/4" hole in the drain line port
- Remove compression nut from the **Drain Saddle**
- Insert 1/4" drain tube through compression nut
- Hand tighten compression nut on to the **Drain Saddle**



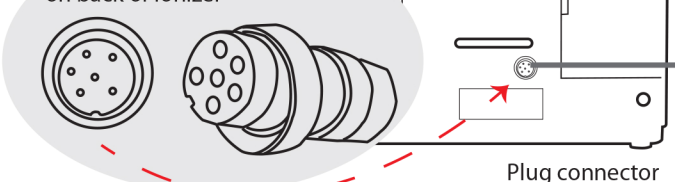
7 Back

- Connect the **faucet adapter** to the turret until they butt up flush. This should only be hand tightened.*
- Then connect the **blue alkaline tubing** from the **faucet** to the **faucet adapter****

* No Teflon or tools are needed
** Some trimming may be needed on the tubing

- Connect the **faucet patch cable** from the **faucet** to the back of the ionizer by lining up the pins on the 6 pin **plug connector**
- Push in and screw the cap down until snug but don't over tighten

* Do not over tighten connection on back of ionizer



4 Bottom

(See page 18 in the manual for Quick Connect Fitting instructions).

- After removing the plugs from the inlet and outlet elbows, connect the tubing coming from the **Coral Calcium** filter "OUT" to the source water "inlet".
- Connect the power cable to a dedicated outlet under the sink

