

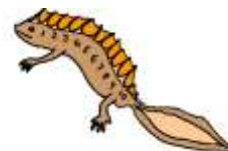


NEWTON'S NUMBER TRACK PUZZLE 4

Each number in the number track is made by adding the previous 2 numbers.

Example

7	5	12	17	29
---	---	----	----	----

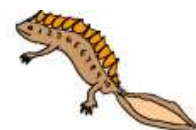


- The third number is made by adding the first 2 numbers $7+(-5) = 2$
- The 4th number is made by adding the 2nd and 3rd numbers: $5+12=17$, etc.

Fill in the missing numbers in these number tracks.

1)	6	12			
2)	30	50			
3)	7	6			
4)	13	8			
5)	0.1	0.2			
6)	0.4	0.3			
7)	0.5	0.2			
8)	7		19		
9)	3				21
10)					30
					30
					30
					30

See if you can find 4 different solutions to question 10.





NEWTON'S NUMBER TRACK PUZZLE 4 ANSWERS

1)	6	12	18	30	48
2)	30	50	80	130	210
3)	7	6	13	19	32
4)	13	8	21	29	50
5)	0.1	0.2	0.3	0.5	0.8
6)	0.4	0.3	0.7	1	1.7
7)	0.5	0.2	0.7	0.9	1.6
8)	7	12	19	31	50
9)	3	5	8	13	21
10)	0	10	10	20	30
	3	8	11	19	30
	6	6	12	18	30
	9	4	13	17	30
	12	2	14	16	30
	15	0	15	15	30

There are 6 possible (positive integer) solutions to question 10.