



# Complete **Anatomy** Shortcuts

Here are some useful shortcuts to help you to work more quickly in Complete Anatomy. You can now do things by pressing a combination of keys that would normally need a mouse or trackpad.

To use a keyboard shortcut, hold down the first one or more keys while pressing the last key of the shortcut. You'll find the complete list of shortcuts below. We have also included a helpful guide for you to obtain all of the same results through the Mac Menu.

## COMMANDS

## SHORTCUTS

## MAC MENU

### FUNCTIONALITY

Home	⌘ command + <b>enter</b>	File > Home
Undo All	⌘ command + <b>R</b>	File > Undo All
Clear all Tools	⌘ command + <b>delete</b>	Tools > Clear all tools
New Screen	⌘ command + <b>shift + S</b>	File > New > Screen
New Recording	⌘ command + <b>shift + R</b>	File > New > Recording
New Quiz	⌘ command + <b>N</b>	File > New > Quiz
New Question	⌘ command + <b>shift + N</b>	File > New > Question
Redo	⌘ command + <b>shift + Z</b>	File > Redo
Undo	⌘ command + <b>Z</b>	File > Undo
Quit	⌘ command + <b>Q</b>	File > Quit
Deselect structure, Cancel Save, Close Edit/Tips Mode, Cancel Search	<b>esc</b>	File > Cancel
Rotate the model	<b>arrow</b> keys <b>↶ ↷</b>	Camera > Rotate
Move (the model)	<b>shift + arrow</b> keys <b>↶ ↷</b>	Camera > Move
Zoom in	<b>shift + +</b>	Camera > Zoom +/-
Zoom out	<b>shift + -</b>	Camera > Zoom +/-
Open Models Menu	⌘ command + <b>M</b>	File > Models
Show/Hide Open Tabs	⌘ command + <b>T</b>	File > Show Tabs
Create New Tab	⌘ command + <b>shift + T</b>	File > Create New Tab
Close Current Tab	⌘ command + <b>W</b>	File > Close Current Tab
Close Other Tabs	⌘ command + <b>shift + W</b>	File > Close Other Tab
Go to Next Tab	control + <b>tab</b>	-
Go to Previous Tab	control + <b>shift + tab</b>	-

### SYSTEM MENU

Skeletal	<b>1</b>	System > Skeletal
Connective T.	<b>2</b>	System > Connective Tissue
Muscular	<b>3</b>	System > Muscular



# Complete **Anatomy** Shortcuts

Arterial	4	System > Arterial
Venous	5	System > Venous
Lymphatic	6	System > Lymphatic
Nervous	7	System > Nervous
Respiratory	8	System > Respiratory
Digestive	9	System > Digestive
Endocrine	0	System > Endocrine
Urogenital	-	System > Urogenital
Integumentary	+	System > Integumentary
Add/Remove layers	(choose system) + <b>option</b> + ( + / - )	System > Choose system > Remove Layer /Add Layer
Switch off/on system	(choose system) + <b>option</b> + 0	System > Choose system > Turn System On/Off

## MAIN MENU

Search	⌘ command + F	Help > Search
Open Tools	⌘ command + 2	File > Tools
Open Library: Courses	⌘ command + 3	File > Library > Courses
Open Library: Content	⌘ command + 4	File > Library > Content
Open Library: Screens	⌘ command + <b>shift</b> + 5	File > Library > Content Types > Screens
Open Library: Recordings	⌘ command + <b>shift</b> + 6	File > Library > Content Types > Recordings
Open Library: Quizzes	⌘ command + <b>shift</b> + 7	File > Library > Content Types > Quizzes
Open Library: Questions	⌘ command + <b>shift</b> + 8	File > Library > Content Types > Questions
Open Library: Models	⌘ command + 5	File > Library > Models
Open Library: Videos	⌘ command + 6	File > Library > Videos
Open Store	⌘ command + 7	File > Stores
Open Settings	⌘ command + 8	File > Settings

## MANIPULATION TOOLS (only available when a structure is selected)

Isolate	⌘ command + i	Edit > Isolate
Hide	delete	Edit > Hide
Fade	⌘ command + J	Edit > Fade
Hide Others	⌘ command + <b>shift</b> + K	Edit > Hide Others
Fade Others	⌘ command + <b>shift</b> + J	Edit > Fade Others
Multi Selection	⌘ command + (select structure)	-
Multi Selection (Enter Mode)	⌘ command + <b>shift</b> + M	Edit > Multi Selection



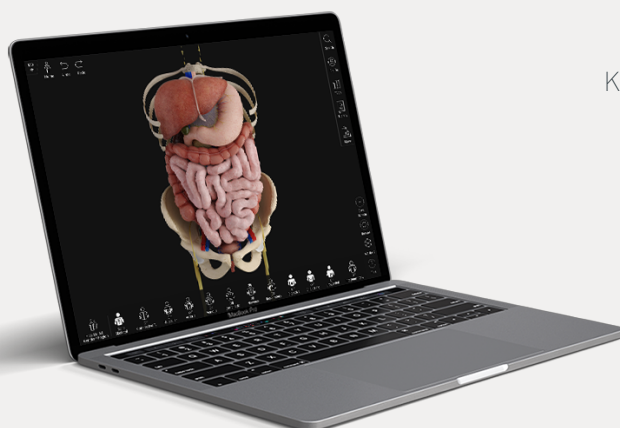
# Complete **Anatomy** Shortcuts

## MODELS

Full Body	shift + 0	File > Models > Full Body
Head & Neck	shift + 1	File > Models > Head & Neck
Upper Limb (Right)	shift + 2	File > Models > Upper Limb (Right)
Upper Limb (Left)	shift + 3	File > Models > Upper Limb (Left)
Thorax	shift + 4	File > Models > Thorax
Abdomen	shift + 5	File > Models > Abdomen
Back	shift + 6	File > Models > Back
Pelvis	shift + 7	File > Models > Pelvis
Lower Limb (Right)	shift + 8	File > Models > Lower Limb (Right)
Lower Limb (Left)	shift + 9	File > Models > Lower Limb (Left)

## TOOLS

2D Pen	P	Tools > 2D Pen
3D Pen	shift + P	Tools > 3D Pen
Labels	L	Tools > Labels
Change label side	shift + L	-
Textbox	T	Tools > Textbox
Sketch	S	Tools > Sketch
Cut	C	Tools > Cut
Change cut type	shift + C	-
Fracture	F	Tools > Fracture
Change fracture type	shift + F	-
Growth	G	Tools > Growth
Spurs	O	Tools > Spurs
Pain	X	Tools > Pain
Discover	D	Tools > Discover
Import Image	I	Tools > Insert Image



Keyboard shortcuts are available on  
Complete Anatomy for Mac

