

# Compass Side Carry Handle Kit

Part Number 71190031

## Kit Contents:

- (2) Side Carry Handles
- (4) Screw 10-32 x 1" PHMS
- (4) Nut 10-32 Nylock
- (4) Washer #10 x 0.625"
- (4) Fender Washer #10

## Tools Needed:

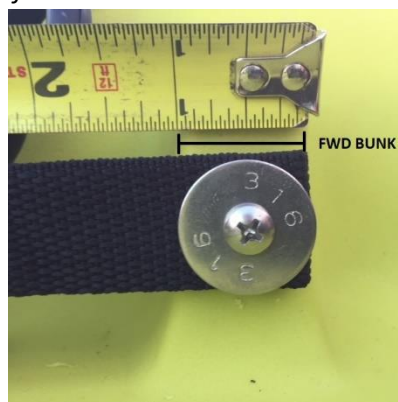
- Drill
- Phillips driver bit
- 3/8" wrench
- 3/16" drill bit

## Installation Instructions:

1. Drill a 3/16" hole in the center of the inboard surface of each molded-in Compass seat bunk, 1 1/4" down from the top of the bunk.



2. Fold the nylon webbing ends of each handle over and pass the 10-32 x 1" screw through the #10 fender washer and both holes in the doubled-over webbing. *\*Note: The forward seat bunk is slightly narrower than the aft seat bunk, and the doubled-over webbing is manufactured to match the width of each bunk. Make sure the handle is oriented so that the width of the folded nylon webbing portion matches the width of each seat bunk.*



3. Insert the screws into the 3/16" holes you drilled in each seat bunk. Reach in through the center hatch to access the screws inside the hull where you'll apply the #10 x .625" washer over the screw and then thread the nylock nut on, finger tight to start.

*\*Note the correct hardware orientation for the assembly, with the smaller washer on the inside of the hull:*



4. Using a Phillips driver bit and a 3/8" wrench to secure the nylock nut, tighten up the thru-bolt fasteners securing the handle to the kayak.