



Hobie 12 Mono-Cat

Set-up & Assembly Instructions

IMPORTANT

PLEASE READ INSTRUCTIONS
COMPLETELY
BEFORE ASSEMBLING OR
SAILING THE BOAT.

Congratulations on your purchase of the Hobie Mono-Cat. You can take pride in the fact that you have chosen a product which lives up to the traditional Hobie quality and performance. As all Hobie products, your Mono-Cat comes complete and ready to sail—just add wind.

Mono-Cat Features

Below are some of the features that place your Mono-Cat in a class of its own.

● ABS ACRYLIC—POLYSTYRENE BEAD FUSION

For unequalled strength to weight ratio results in a strong, dependable craft that still retains the necessary lightweight characteristics for high performance.

● SPACE AGE ACRYLIC FILM COVERING ALL SURFACES

Keeps the hull and deck at a high degree of gloss finish. Protects from abrasive sand and scratches. Greatly retards the sun's damaging ultra-violet rays.

● SELF-BAILING COCKPIT

Equipped with two large capped neoprene through-hull tubes that purge the cockpit of all water.

● IMPORTED MALAYAN TEAK RUDDER WITH ALL NEW KICK-UP DESIGN

Enables you to safely sail up onto the beaches or in shallow waters without fear of breaking rudder.

● IMPORTED MALAYAN TEAK CENTER BOARD

Fully adjustable to any position from the cockpit and shock equipped. The down position is backed-up by a bungee which allows the centerboard to temporarily retract upon hitting an unknown object. Centerboard can be lowered or raised from the cockpit to any desired position. It's especially effective during certain racing conditions.

● COUPLED MAST

Quickly uncoupled by hand for compact storage or transport.

● TWO LARGE WATERTIGHT COMPARTMENTS

Ideal for storing beach towels, sailing jackets, or snacks.

● TWO BUILT-IN ICE CHESTS

Due to the Polystyrene foam lining in the watertight storage compartments, the compartments make ideal insulated ice chests for storing your favorite beverage.

● BOOM VANG

Controllable from the cockpit and allows you to super-trim your sail through a multitude of boom tensions and is used in sailing down wind or away from the wind to hold the boom down so the sail does not spill the wind.

● DOWN HAUL

Controllable from the cockpit and allows further combinations of tuning in conjunction with the boom vang. Haul down tight for light winds, and loose for stronger winds.

● TRAVELER CONTROL

Controllable from the cockpit allowing precise positioning of the traveler. Pull it tight to sail to windward, and slack off on a broad reach sailing down wind.

CARE-CLEANING OF KORAD A ACRYLIC FILM LAMINATES

For best results, the following cleaning agents have been found best:

For increased gloss level:

DO USE

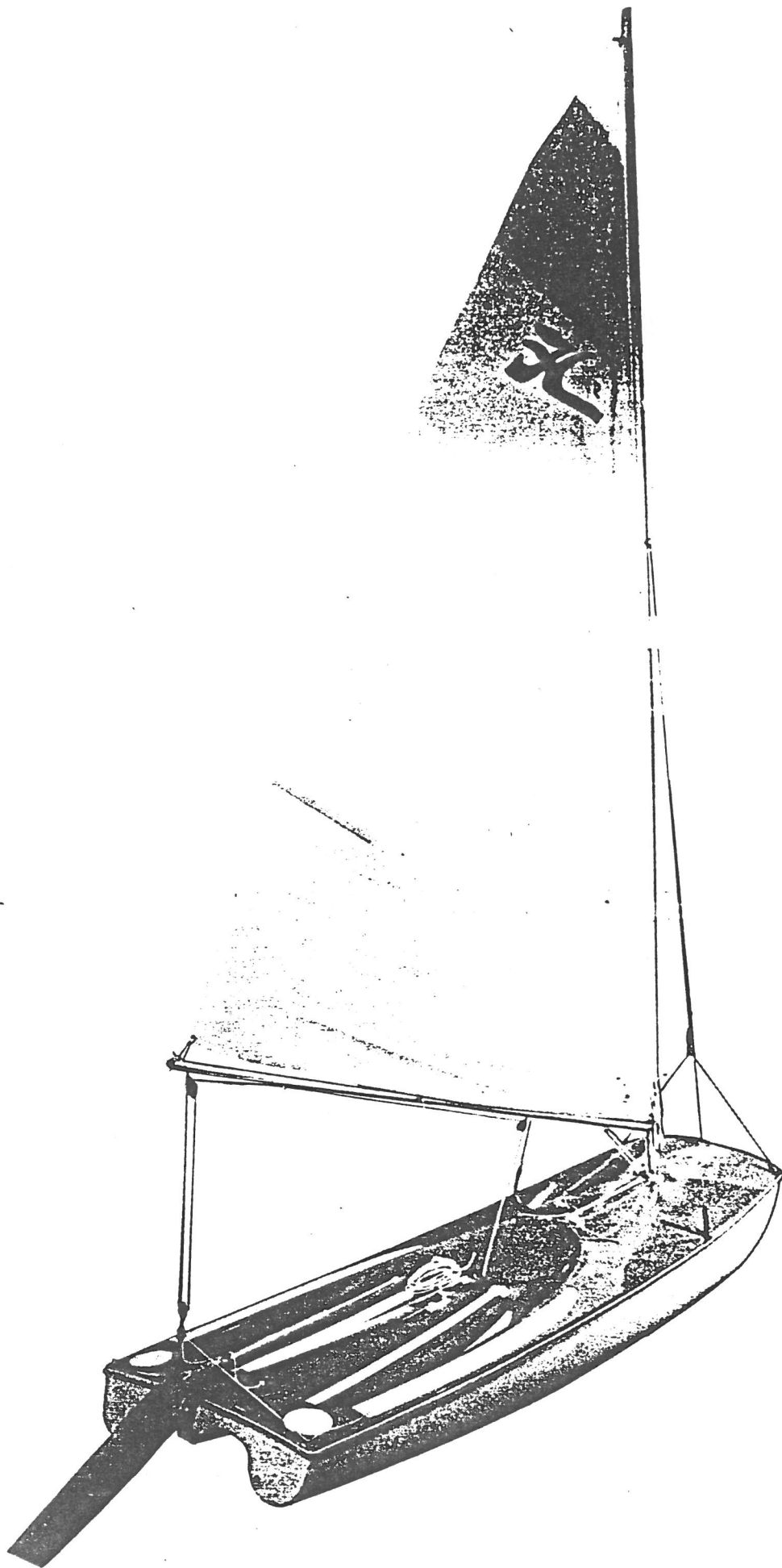
Fantastic
Joy Detergent
Swish Detergent
Calgonite

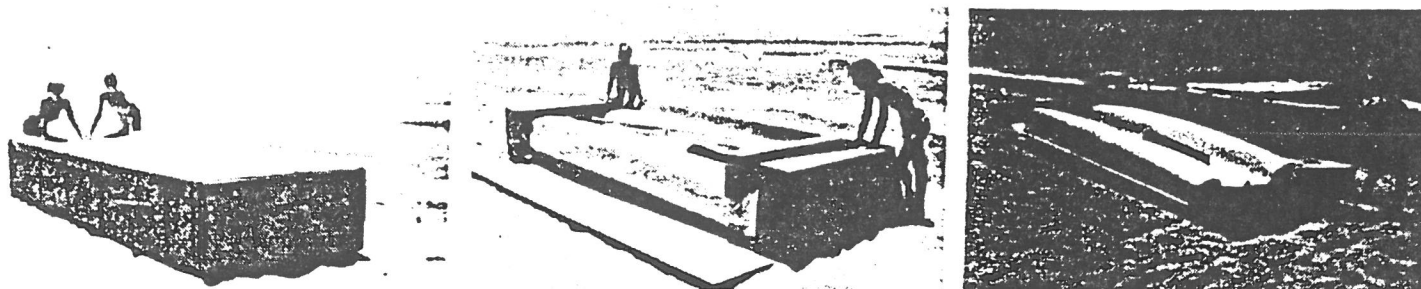
DO NOT USE

Solvents
Boiling Water
Cloths with Grit or Abrasive Particles
Kitchen Scouring Components

DO USE

Simonize
Aero Wax
Glo Coat





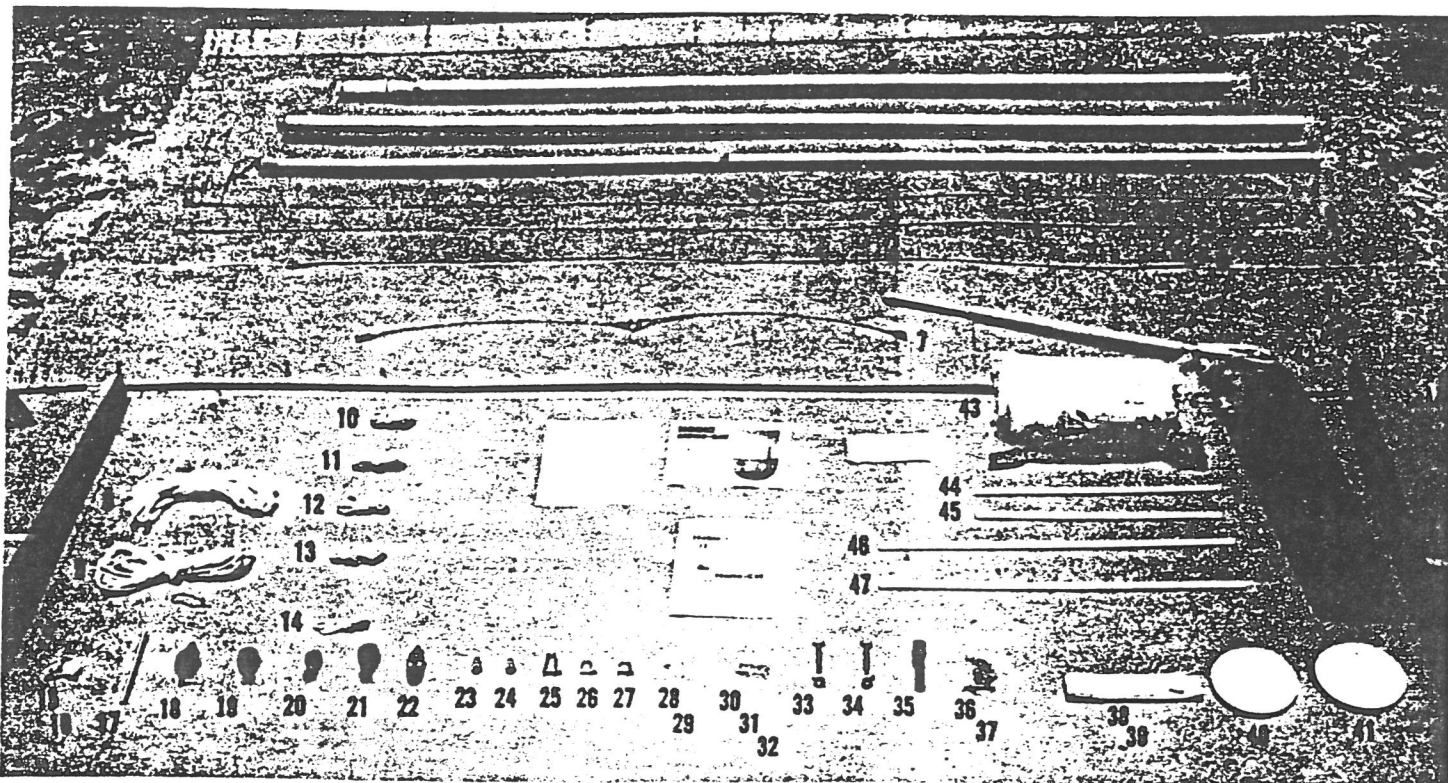
1

2

3

Your new Hobie Mono-Cat comes carefully packed in a specially designed container measuring 22 x 51 x 143 inches. Uncrating should be done as depicted in Pictures 1 through 6. The crate can be utilized to lay out the components.

NOTE: IF SOME PARTS ARE MISSING—RECHECK THE CONTAINER AND WRAPPING.

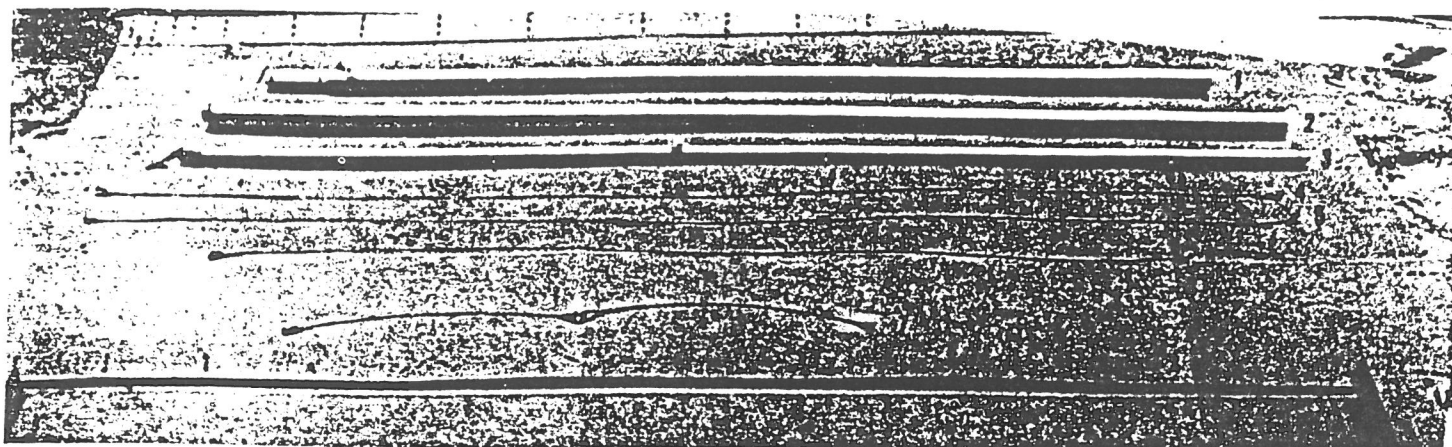


4

For the purpose of assembly, we will identify all parts by the assembly numbers #1 through #47. Tools required for assembly: 1 screwdriver, 2 pair of pliers. Make sure on final assembly that all shackles are tightened securely.

Assembly Numbers	Description
#1	Mast Top
#2	Mast Bottom
#3	Boom
#4	Shroud 10' 1"
#5	Shroud 10' 1"
#6	Forestay 7' 11"
#7	Bridle Assembly Inc. Ring
#8	Line Mainsheet 5/16" Dia., 35'
#9	Line Halyard 3/16" Dia., 36'
#10	Line Vang 3/16" Dia., 7-1/2'
#11	Line Outhaul 3/16" Dia., 6-1/2'

Assembly Numbers	Description
#12	Line Traveler 3/16" Dia., 6-1/2'
#13	Line Downhaul 3/16" Dia., 5-1/2'
#14	Line Traveler Control 3/16" Dia., 2-1/2'
#15	Mast Step Bearing
#16	Mast Step Bearing Screw
#17	Rudder Pin with Cotter Key
#18	Sheet Block Becket with Bell Shackle attached
#19	Sheet Block with Bell Shackle attached
#20	Traveler Block
#21	Traveler Block with Eye

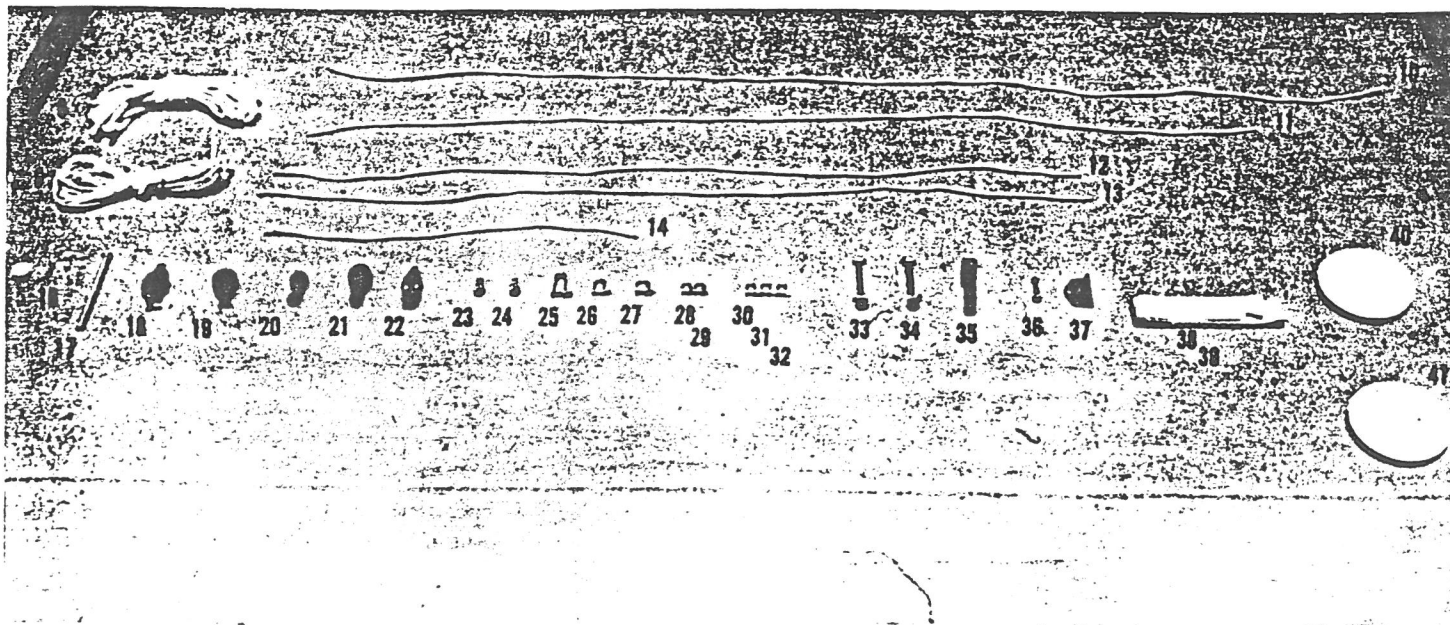


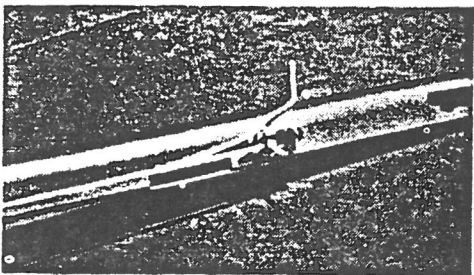
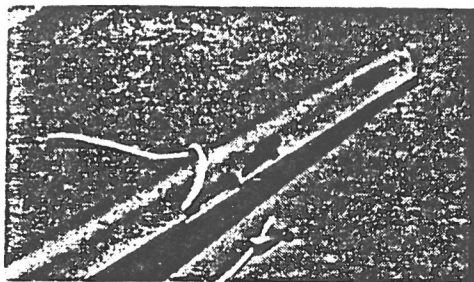
5

Assembly Numbers	Description
#22	Fiddle Block
#23	Downhaul Block
#24	Vang Block Boom
#25	Halyard Shackle
#26	Mast Step and Fiddle Block Shackle
#27	Shackle - Mast Tang
#28	Bell Shackle - Bridle Assembly
#29	Bell Shackle - Bridle Assembly
#30	Dee Shackle - Downhaul
#31	Dee Shackle - Vang
#32	Dee Shackle - Gooseneck
#33	Stay Adjuster with Bell Shackle attached
#34	Stay Adjuster with Bell Shackle attached
#35	Pelican Hook
#36	Screw and Nut Gooseneck
#37	Gooseneck
#38	Hiking Strap
#39	Hiking Strap

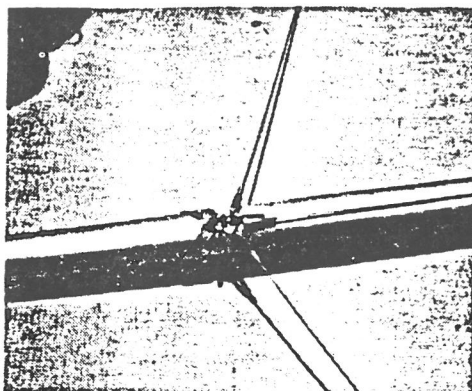
Assembly Numbers	Description
#40	Cover Storage Compartment
#41	Cover Storage Compartment
#42	Rudder Assembly
#43	Sail
#44	Sail Batten Short
#45	Sail Batten Short
#46	Sail Batten Long
#47	Sail Batten Long

6

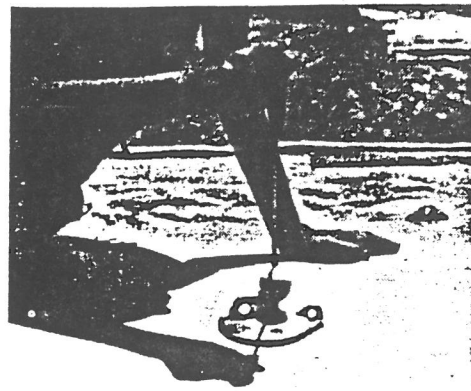




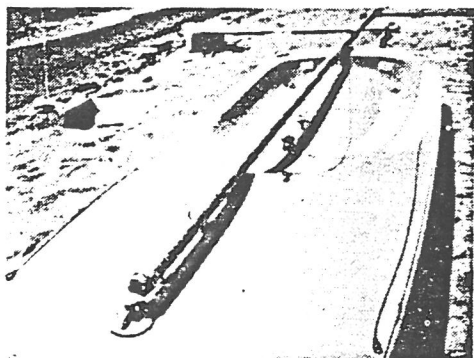
15
Secure both ends to the mast cleat.



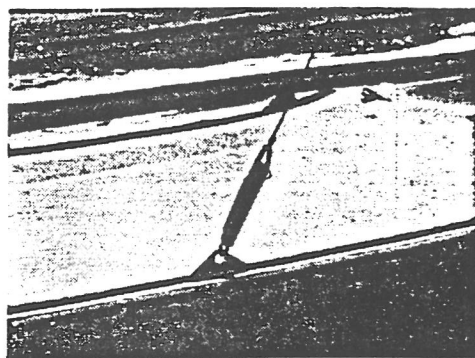
16
Using #27 (Shackle - Mast Tang) attach #4 (Shroud), #5 (Shroud) and #6 (Forestay) to the mast tang. The shorter #6 (Forestay) should be in the center with the longer #5 and #6 (Shrouds) on each side.



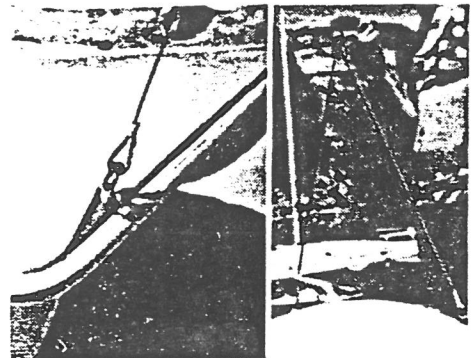
17
Screw #16 (Mast Step Bearing Screw) thru #15 (Mast Step Bearing) to the mast step base.



18
Lay the mast on the deck and attach #33 (Stay Adjuster with Bell Shackle attached) to the left side chain plate. Attach #34 (Stay Adjuster with Bell Shackle attached) to the right side chain plate.



19
NOTE: The open end of the stay adjuster should be facing the stern.
Attach the right shroud (long) to the right stay adjuster and the left shroud (long) to the left stay adjuster.
NOTE: For the time being, use the top hole of the stay adjuster. Care should be taken that the shrouds are straight and not kinked.

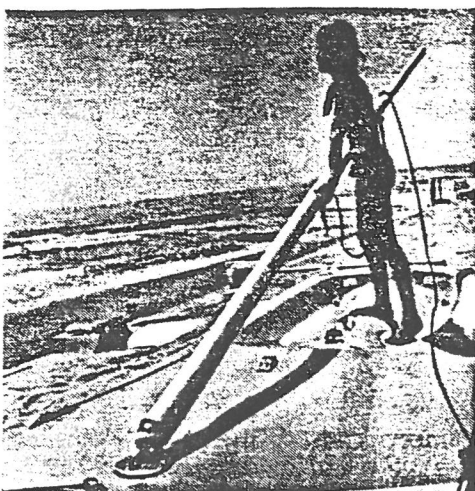


20
Attach #22 (Bridle Assembly) to the front chain plates.

NOTE: The body of the shackle should go through the chain plate and the shackle pin through the shroud.



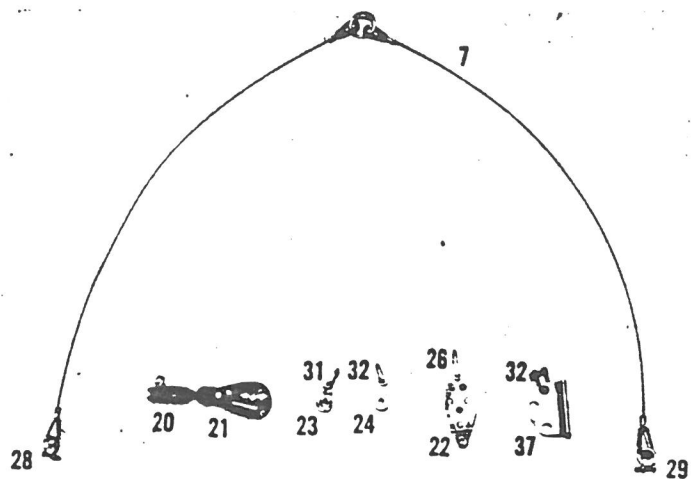
21
Attach #35 (Pelican Hook) to #6 (Forestay) leaving the hook in the open position with the pin and clip secure in your hand.



22
Raise the mast, holding #6 (Forestay) with your left hand, to its full upright position.



23
Keeping tension on #21 (Forestay),



7

Attach: #28 (Bell Shackle) and #29 (Bell Shackle) to the ends of #7 (Bridle Assembly)

#20 (Traveler Block) to #21 (Traveler Block with Eye)

#23 (Downhaul Block) to #30 (Dee Shackle - Downhaul)

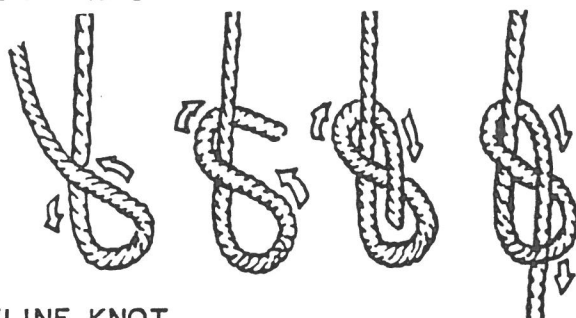
#24 (Vang Block Boom) to #31 (Dee Shackle - Boom)

#22 (Fiddle Block) to #26 (Mast Step and Fiddle Block Shackle)

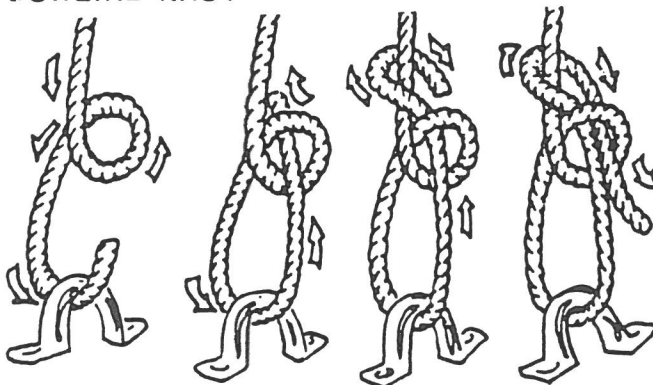
#37 (Gooseneck) to #32 (Dee Shackle - Gooseneck)

Note the position of the 3 holes on the Gooseneck.

FIGURE 8 KNOT

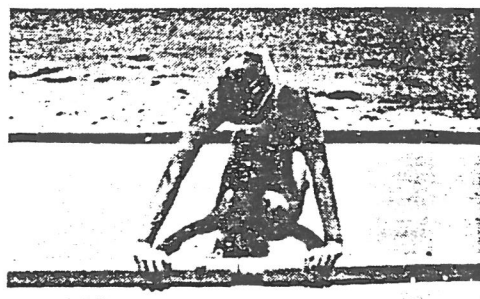
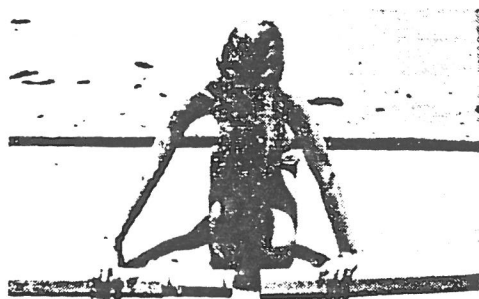


ROWLINE KNOT



8

Lines should be secured by using the knots diagrammed.

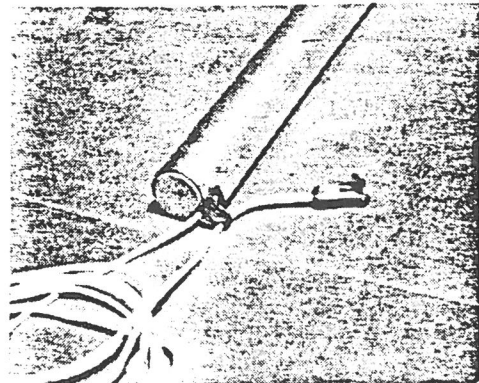
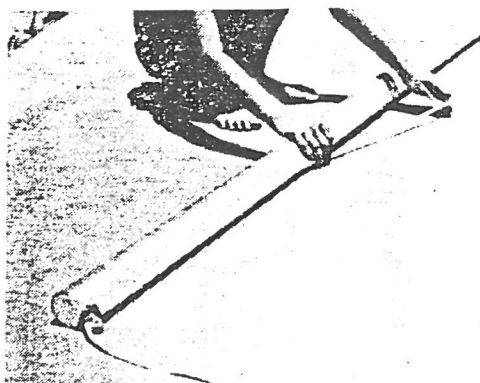
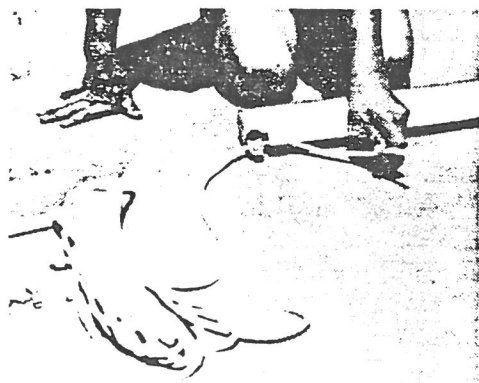


9

10

11

Join #1 (Mast Top) and #2 (Mast Bottom) as depicted above—It's a simple press fit.



12

Insert one end of #9 (Line Halyard) through the pulley at the top of the mast.

13

Pull the line down the Sail Track (inserting as you go) to the Sail Track opening.

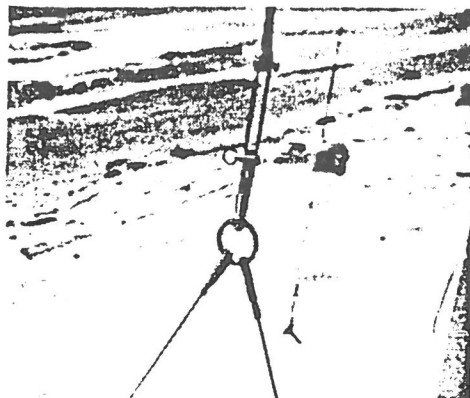
14

Run the other end of #9 (Line Halyard) thru the outside of the pulley and secure it to #25 (Halyard Shackle) using a figure-8 knot.



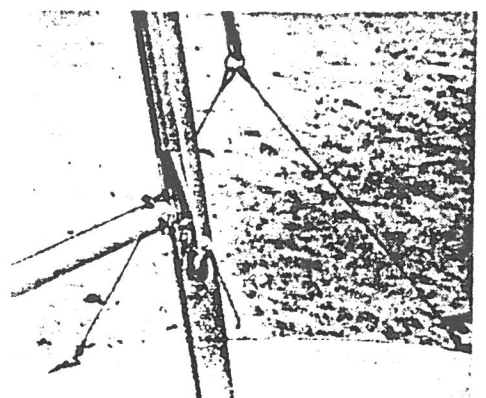
24

step off the front of the deck and place the open hook thru the ring of #7 (Bridle Assembly).



25

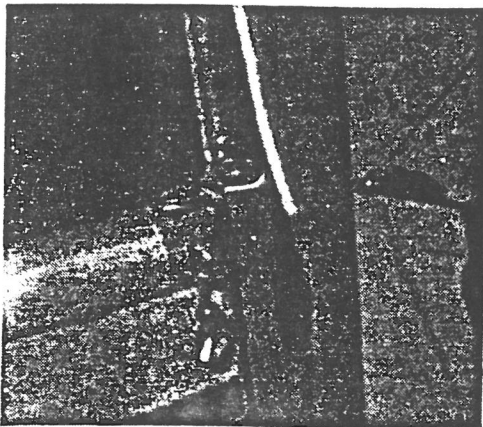
Pull the hook upward and secure with pin and clip.



26

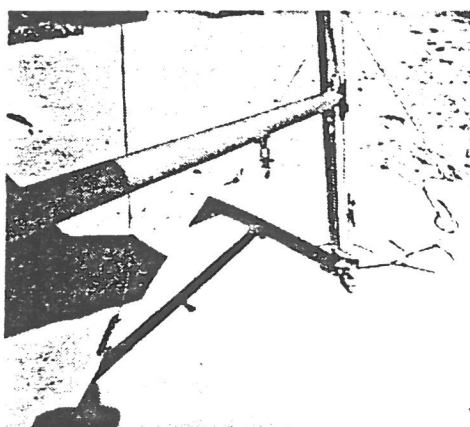
Attach #37 (Gooseneck) to #3 (Boom) using #36 (Screw and Nut). Insert #37 (Gooseneck) in the sail track opening.

NOTE: The #32 (Shackle should be on the top.



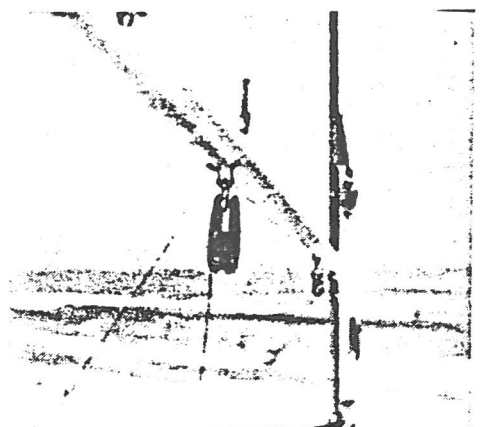
27

Attach #23 (Downhaul Block) to the bottom hole of #37 (Gooseneck).



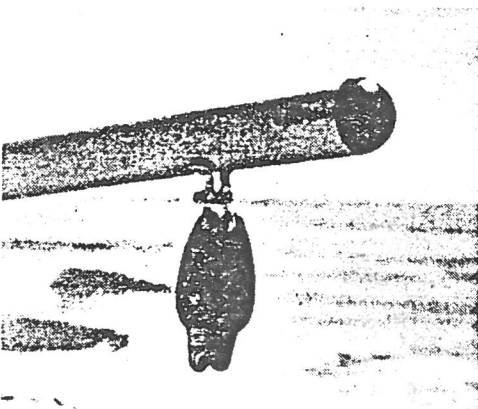
28

Attach #24 (Vang Block Boom) to the boom hanger.



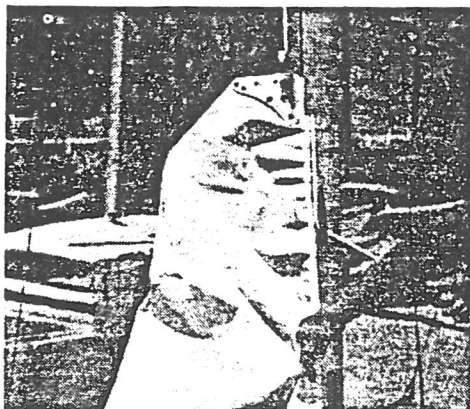
29

Attach #19 (Sheet Block) to the next boom hanger.



30

Attach #18 (Sheet Block Becket) to the boom hanger at the end of the boom.



31

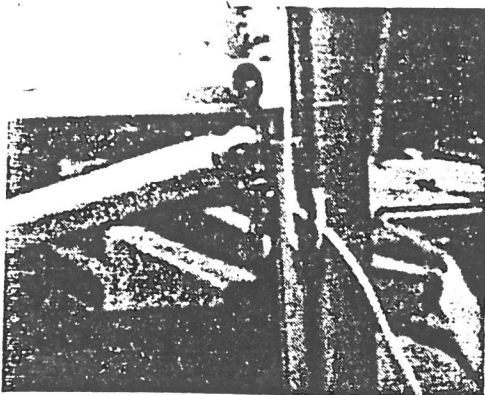
Remove #43 (Sail) from the sail bag. Unfold it and place on the deck.

Attach #25 (Halyard Shackle) to the top of the sail. As you pull down on the free end of #9 (Halyard Line) feed the sail into the mast opening.

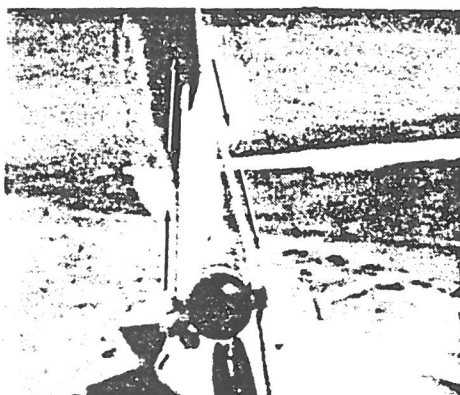


32

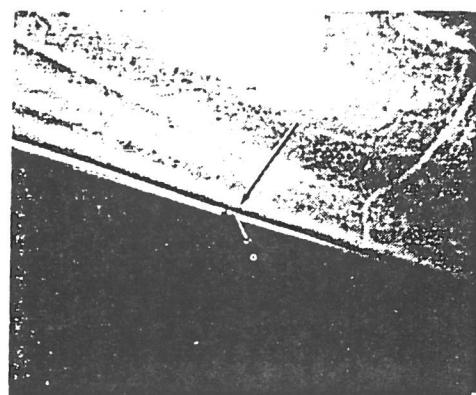
As you raise the sail, insert #44 (Sail Batten - Short), #46 (Sail Batten - Long), #47 (Sail Batten - Long) and #45 (Sail Batten - Short) into the batten pockets.



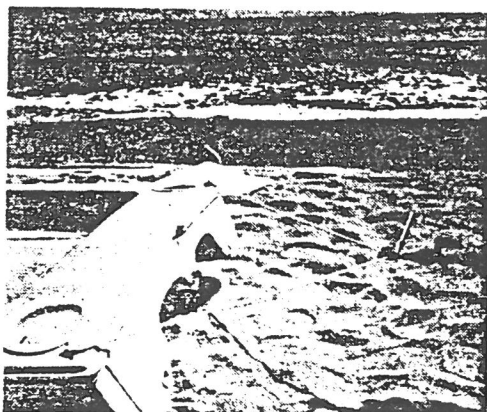
33 Once the sail is fully up, make the halyard line fast to the mast cleat and attach the bottom of the sail to the boom using the attached #32 (Dee Shackle). Excess halyard line may be secured using the bottom mast cleat.



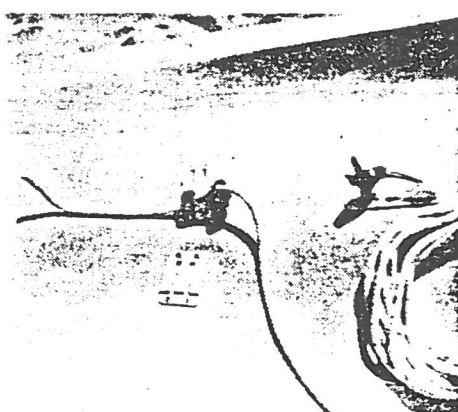
Using #11 (Line - Outhaul) tie a figure-8 knot in one end and thread the other end up thru the left pad eye on the end of the boom—thread thru the grommet of the sail—down thru the rear of the pulley on the right side of the end of the boom.



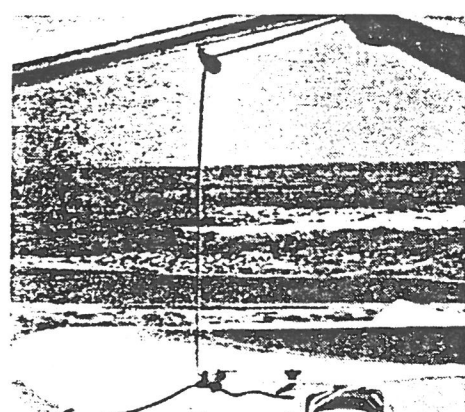
35 Secure the line to the jam cleat on the boom.



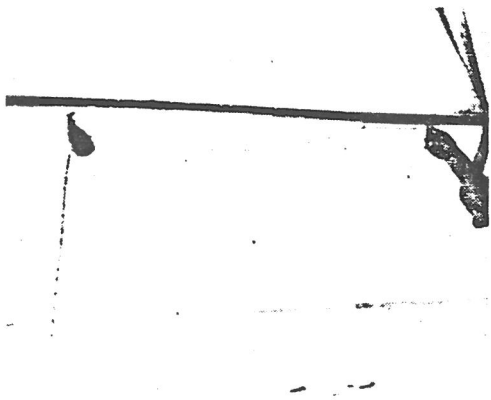
36 Using #12 (Line Traveler) tie a figure-8 knot in one end and thread the other end thru the pad eye located on the left rear deck. Run the other end thru #21 (Traveler Block with Eye) noting the position of the eye screw facing up. Cleat the end of the line thru the jam cleat on the right rear deck.



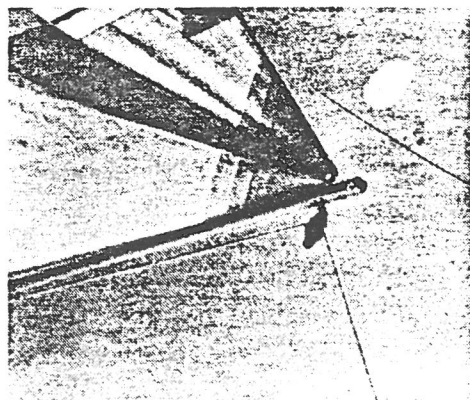
37 Place #8 (Line - Mainsheet) in the cockpit and run one end over the jaws and thru the main swivel jam cleat.



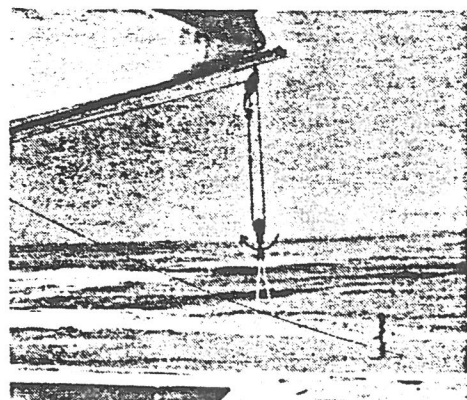
38 Up, over and back thru #19 (Sheet Block)



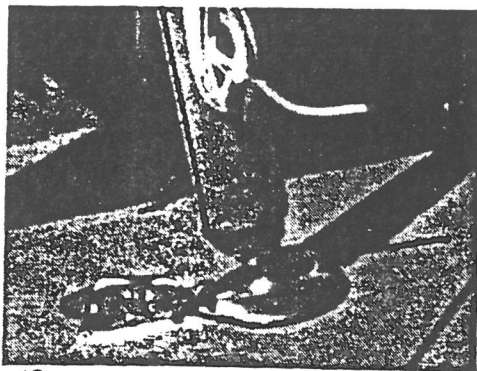
39 and on thru the bottom pad eye guide—



40 Over and down #18 (Sheet Block Becket)—

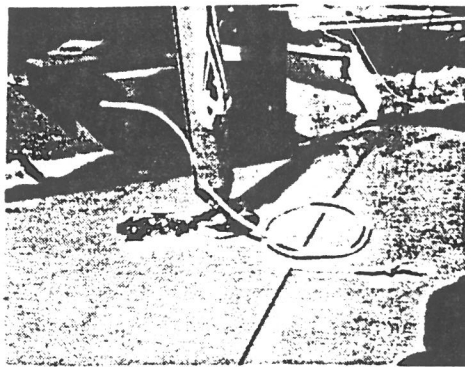


41 Under and thru #20 (Traveler Block) and up to the becket of #18 (Sheet Block - Becket). Tie off with a bow-line knot.



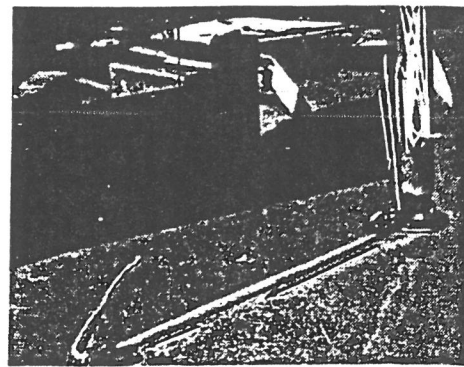
42

Attach #22 (Fiddle Block) to the rear eye of the mast step base.



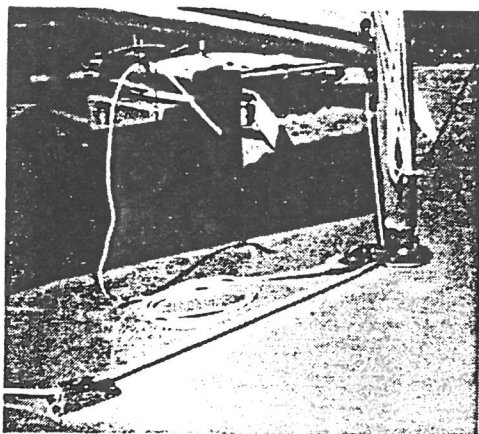
43

Using #13 (Line Downhaul) tie a figure-8 knot in one end and insert the other end thru the hole located on the right side at the base of the mast.



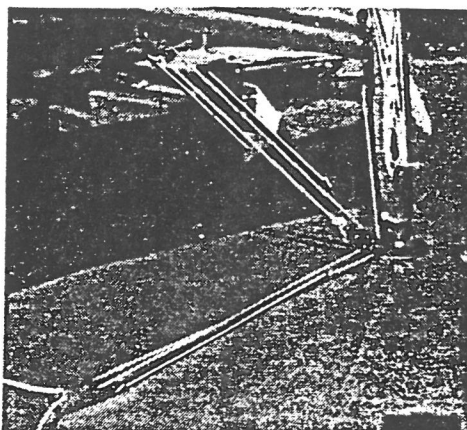
44

Feed the line up and thru the back, over and down #23 (Downhaul Block) thru the lower pulley of #22 (Fiddle Block) and cleat on the left jam cleat.



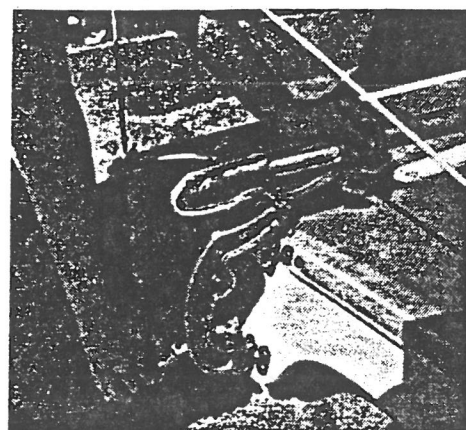
45

Using #10 (Line - Vang) secure one end, using a bowline knot to the becket of #22 (Fiddle Block). Thread the other end up, under and over #24 (Vang Block Boom)—



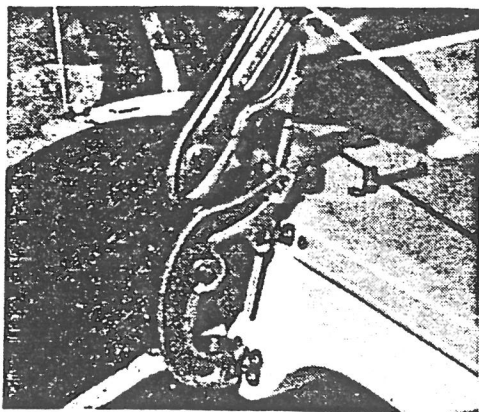
46

back down, over and under the top pulley of #22 (Fiddle Block) and cleat on the right jam cleat.



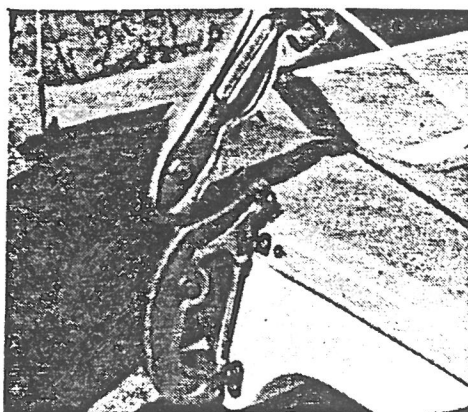
47

Line up the rudder as shown above.



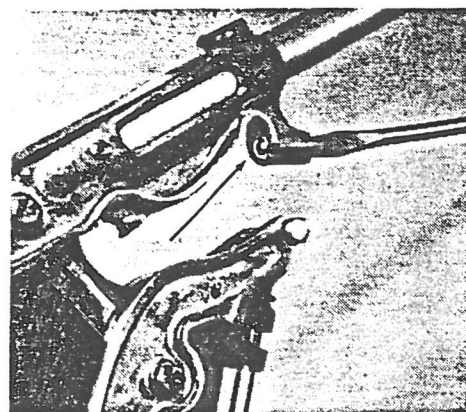
48

Remove the clip and pin on the rudder lock and insert #17 (Rudder Pin) keeping the cotter pin at the top.



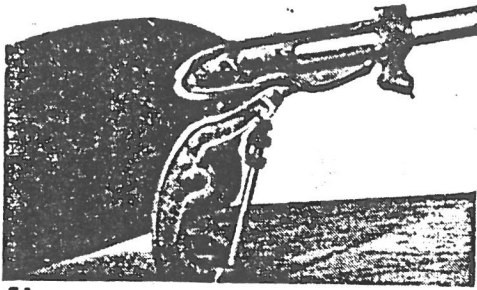
49

When the rudder pin is fully inserted replace the pin and clip on the rudder lock.

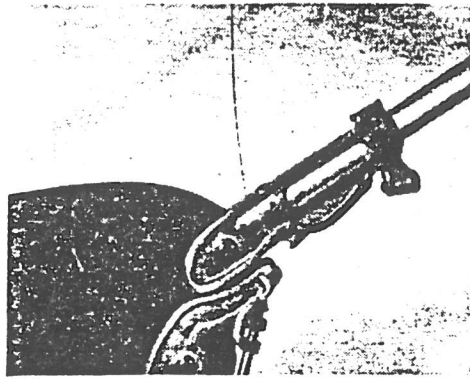


50

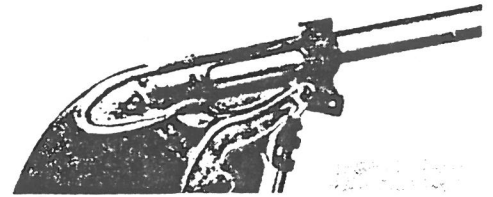
The kick-up rudder is equipped with a tension adjustable ball bearing. To increase tension, screw the nylon screw in—to lessen tension, screw out.



51

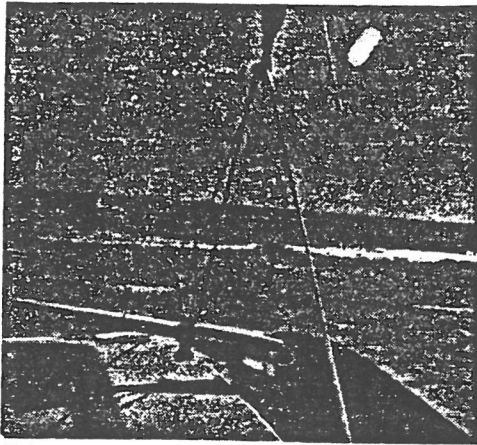


52



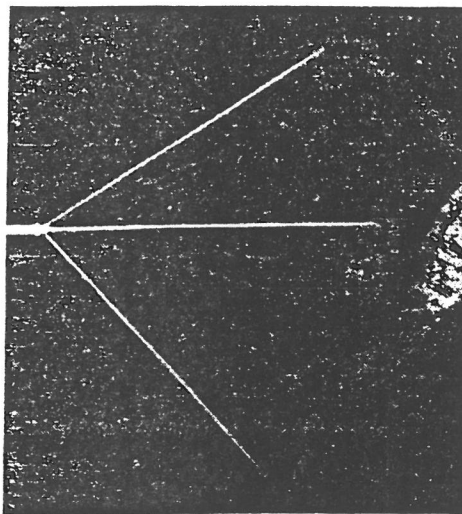
53

Tension should be tight enough to hold the rudder in the down position during all sailing conditions but not too tight that it will not release when it strikes an underwater obstacle. The kick-up rudder has two positive positions as shown above.



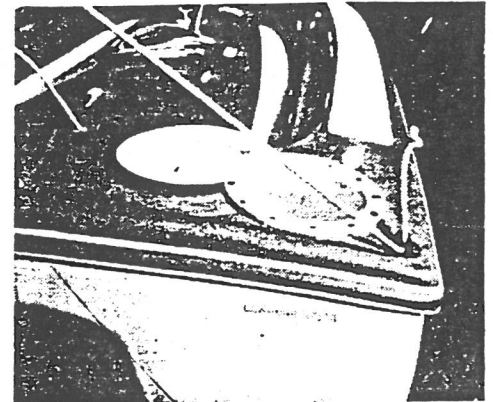
54

Using #14 (Line Traveler Control) tie a figure-8 knot in one end and insert the other end from the top thru the eye on #21 (Traveler Block with Eye) and down to the jam cleat on the top of the rudder housing.



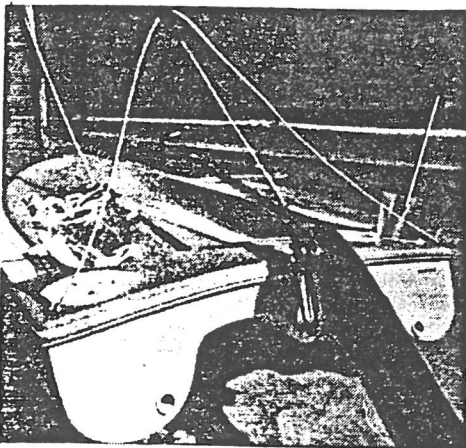
55

The tiller is equipped with an extension that is normally stored out of the way inside the tiller. When needed, pull the extension out all of the way, at which point you have a complete 360° freedom of movement.



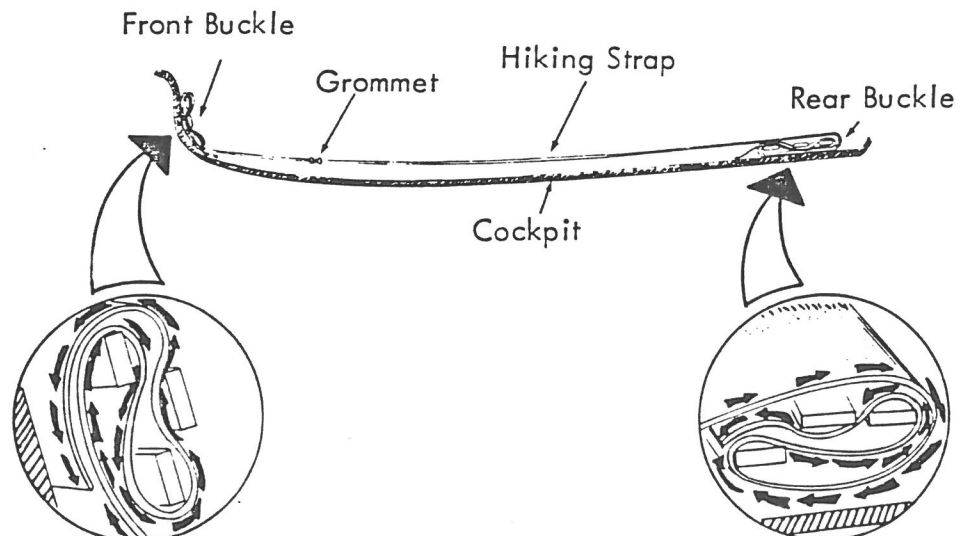
56

Your Mono-Cat is equipped with two unique watertight storage compartments in the stern and these can be utilized for storing clothing, beach towels, snacks, etc. Due to the foam lining, they are excellent coolers for keeping beverages cool.



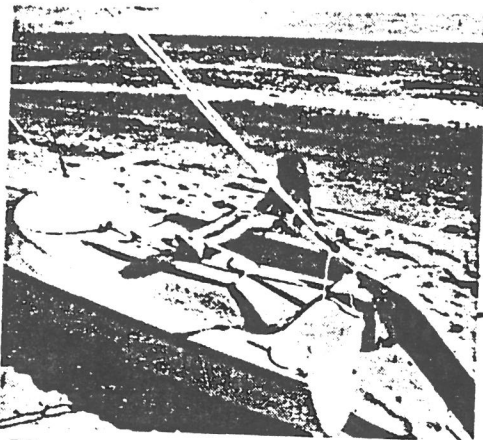
57

A piece of foam glued to the underside of #40 (Cover Storage Compartment) and #41 (Cover Storage Compartment) will provide flotation to these covers and enable you to retrieve them in case they are dropped overboard. You will find your Sail # Package in one of the storage compartments.



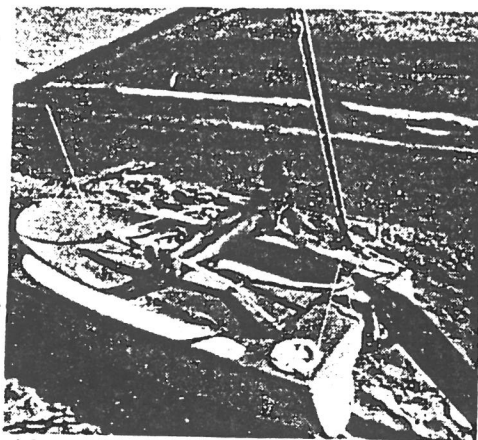
58

Hiking straps should be threaded as illustrated in the above diagrams. Adjustment for tightening or loosening should all be made at the front buckle.



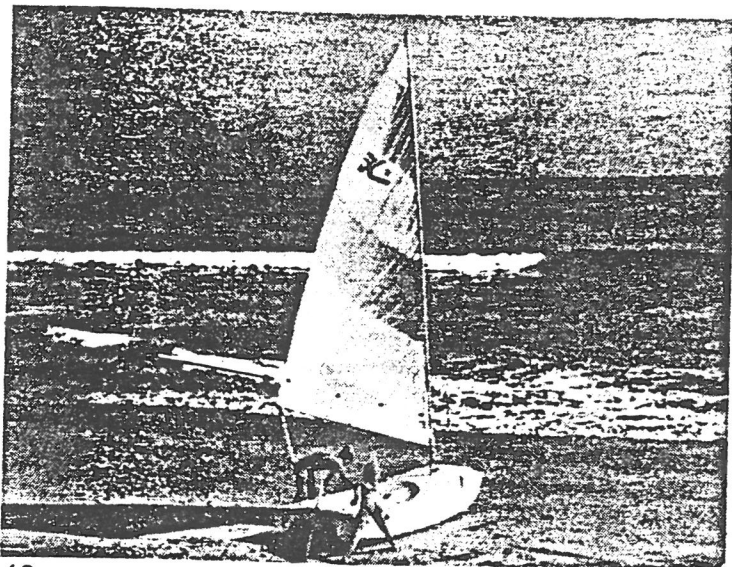
59

The hiking straps have been equipped with grommets to provide a tighter setup for smaller children. By running a line through these grommets and cinching the two straps together at the center of the cockpit, much of the normal slack is eliminated.



60

62 The center board is controllable from the cockpit. To lower the center board, pull up on the black handle as far as it will pull and secure the line in the jam cleat. To raise the center board, uncleat the black handle and pull up on the white handle as far as it will pull and secure the line in the jam cleat. NOTE: The center board should be fully down for all sailing conditions.



63

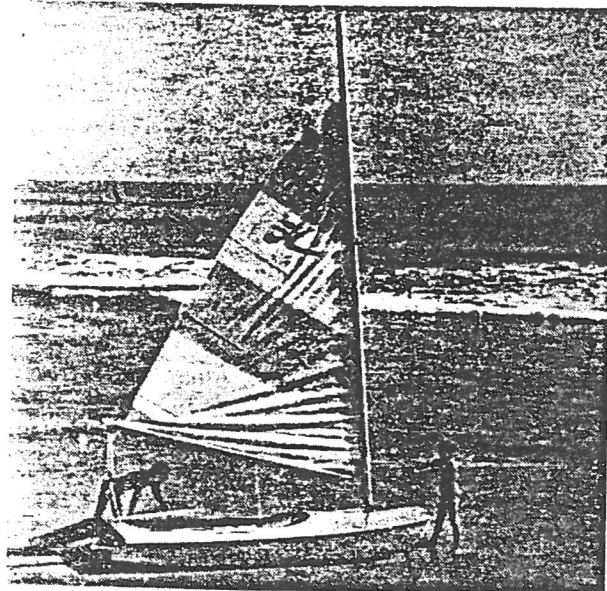
Righting is an easy matter and can be accomplished by a 50-pound child. In the turtle position, a righting line will speed up the sequence. The righting line should be attached to the up wind shroud. Make sure your mainsheet is not locked. Center yourself in the middle of the down wind hull and lean back holding the righting line as the up-wind hull comes up to a vertical position. Step up on the centerboard, still holding the righting line for balance and move back towards the tip of the centerboard, which gives you excellent leverage. As the sail and mast break clear of the water, be prepared to roll over into the cockpit. To eliminate all water from the hull, it is not necessary to step the mast. Simply remove the storage compartment cover and turn the Mono-Cat over on its side, draining the water through the compartment opening.



61

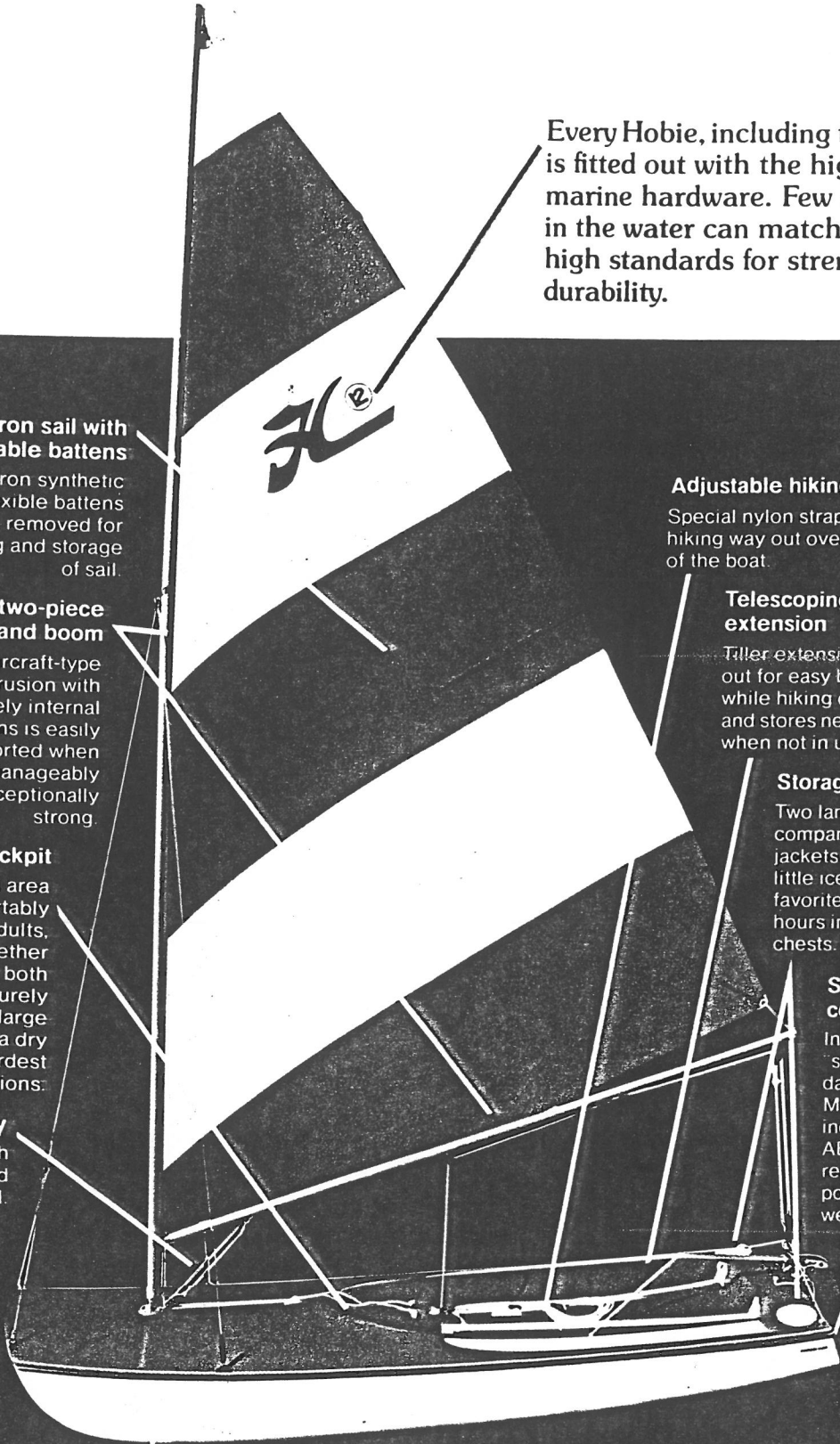
IMPORTANT: For your convenience, an eye has been cast in front of the mast step base that should be used when beaching or pulling your Mono-Cat. It is suggested that a line approximately 40 in. long with a snap hook on one end and a knot or T-handle on the other end be used for this purpose. When not in use, the beaching line can be kept in the storage compartment.

CAUTION: **DO NOT USE** the front bridle and shroud wires for beaching or pulling the boat. Serious damage may result to the chain plate, front bridle or shroud wires if used in this manner.



64

The Hobie Mono-Cat is a high performance, yet extremely stable, craft. It was designed to satisfy the most demanding skipper, yet be safe and fun for children and novices. We have installed reefing points in the sail that should be utilized in high wind conditions. Under no circumstances should any skipper venture out into weather that is beyond his capabilities. As we all know, there are times when a nice, enjoyable breeze rapidly deteriorates into a howling nightmare. It is during these occasions that the Mono-Cat in a reefed position maintains its fine handling qualities and allows a safe and sane return to the shore. With practice, the more experienced skipper can utilize the reefing points to his advantage in racing conditions.



Every Hobie, including the Hobie 12, is fitted out with the highest quality marine hardware. Few other boats in the water can match Hobie's high standards for strength and durability.

Tetron sail with removable battens

Tough Tetron synthetic fabric with flexible battens which can be removed for easy folding and storage of sail.

Lightweight two-piece mast and boom

Aerodynamic aircraft-type alloy extrusion with completely internal connections is easily transported when uncoupled. Manageably light, yet exceptionally strong.

Contoured cockpit

A specially shaped area designed to comfortably accommodate two adults, affording support whether in a sitting position or both reclining for a leisurely downwind sail. Two large bailer tubes insure a dry cockpit under the hardest sailing conditions.

Race ready

Comes complete with downhaul, boomvang, and traveler control.

Adjustable hiking straps

Special nylon straps for hiking way out over the side of the boat.

Telescoping tiller extension

Tiller extension telescopes out for easy boat handling while hiking over the side and stores neatly inside tiller when not in use.

Storage compartments

Two large, separate storage compartments for stowing jackets and lunches; add a little ice, and keep your favorite beverage cold for hours in these built-in ice chests.

Semi-tunnel hull configuration

Incorporates a reverse "spine" to deflect and dampen chop poundings. Molded of practically indestructible high-impact ABS acrylic plastic and reinforced with expandable polystyrene foam for light weight and flotation.

Rounded asymmetrical hulls

Provide a high degree of stability by supplying buoyancy on the extreme outer perimeters; yet fine enough to knife through the water at racing speeds.

Retractable centerboard

Controlled from the cockpit, allowing you to sail right up onto the beach. Also made of imported Malayan teak.

Controllable kick-up rudder

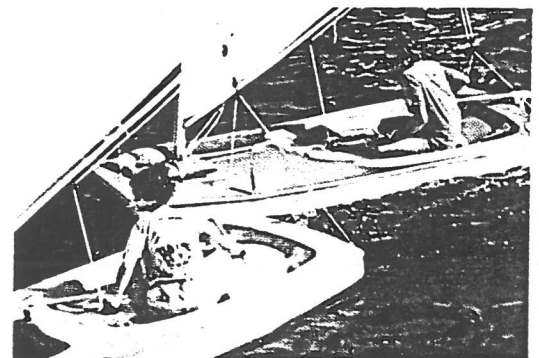
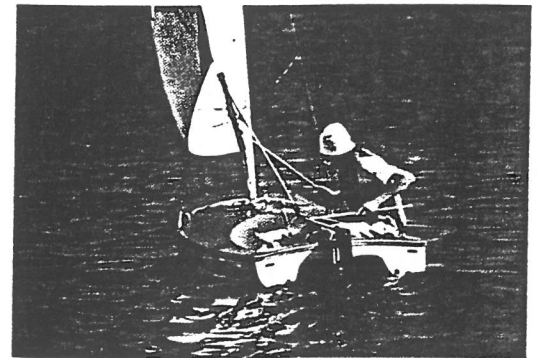
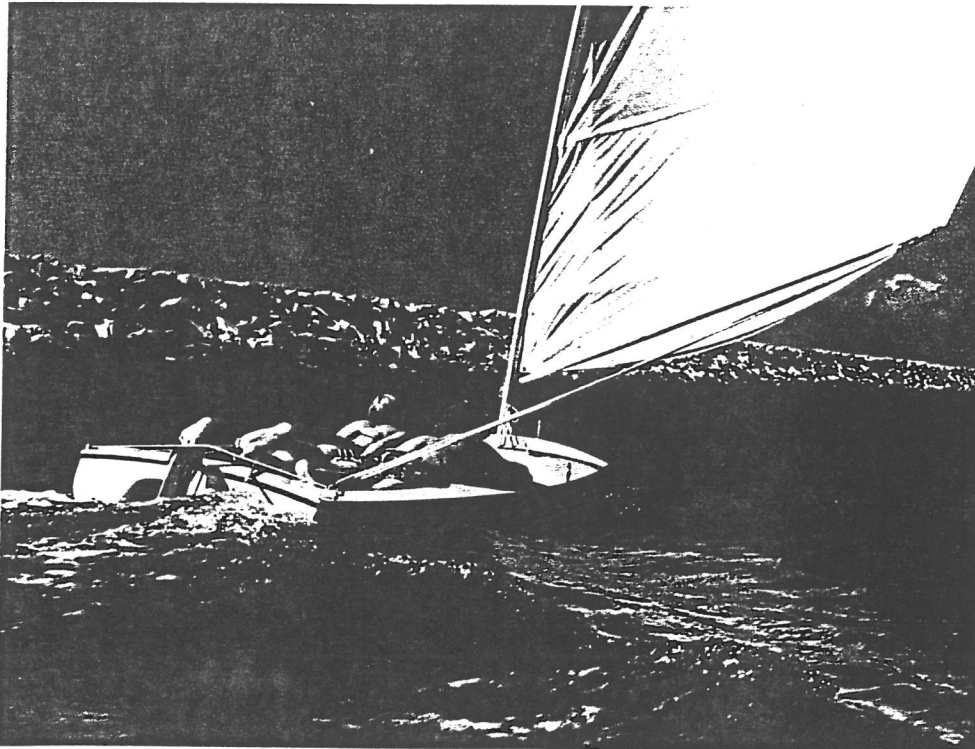
Affords carefree sailing over unseen obstacles — the rudder will automatically kick-up upon contact. Rudder assembly is made of sturdy aluminum castings, and the rudder itself is imported Malayan teak.

HOBIE 12

Hobie's unique blend of fun, speed, and stability...
the cat you can count on!

Sail it alone or double your pleasure with a friend! The Hobie 12 combines monohull maneuverability with catamaran performance in one tight, sporty little package. It's big enough to handle two adults with ease, and unsinkably safe so the kids can have it all to themselves.

Hobie 12 — an established new tradition in boating excitement!



HOBIE 12 HAS ALL THE HOBIE FEATURES!

Easy Rigging!

The Hobie 12's one of the simplest boats afloat to rig. A unique ball-joint base allows its mast to be easily raised and rotated for improved sailing efficiency. An integral mast luff groove permits the sail to be raised and lowered without unrigging the mast. The 12's shrouds and forestay are designed so that a child can easily rig the boat in only a few minutes.

Sailaway-Ready and Raring to Go!

Your Hobie 12 comes complete with everything you need to set sail — including exciting cat-like performance! Even with 300 lbs. of adults aboard, you'll out-class all the other comparable craft in the water!

Maintenance Free!

The hull of the Hobie 12 is protected from weathering by a tough acrylic coating, and the hull itself is made of practically indestructible ABS plastic. The 12's spars are fabricated from a special aluminum alloy of aerodynamic quality, and the sail is rugged and durable, too — the Tetron fabric will resist wear and fading for years!

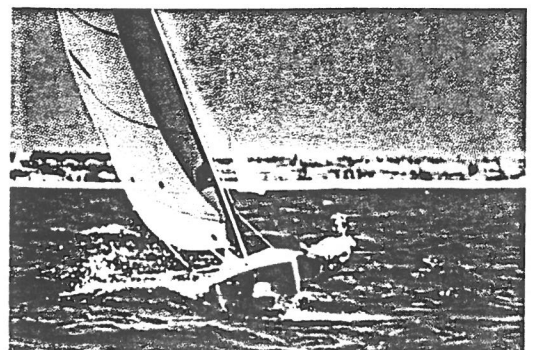
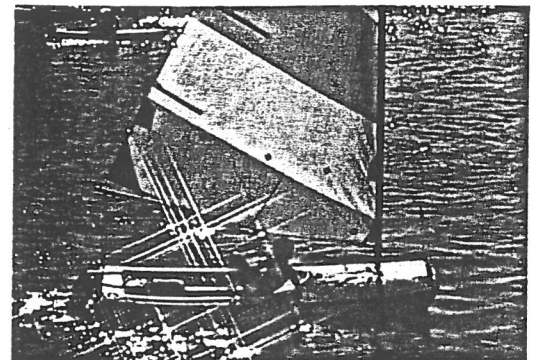
Class racing and comradeship!

For the born competitor, the 12 is a terrific deal! You'll get right in on the action with Hobie 12 Class Association local and national regattas. Anybody with a 12 can race — beginning, intermediate and experienced classes allow every Hobie sailor to participate and maybe win one of the trophies! When you become a Hobie 12 owner, you'll automatically be a member of the Hobie Class Association.

Reassuringly stable!

The expandable polystyrene foam reinforcement of your Hobie 12 makes the boat absolutely unsinkable. You may tip your Hobie over occasionally, but any medium-sized kid can easily right her. And the self-bailing cockpit automatically empties itself as you get underway again.

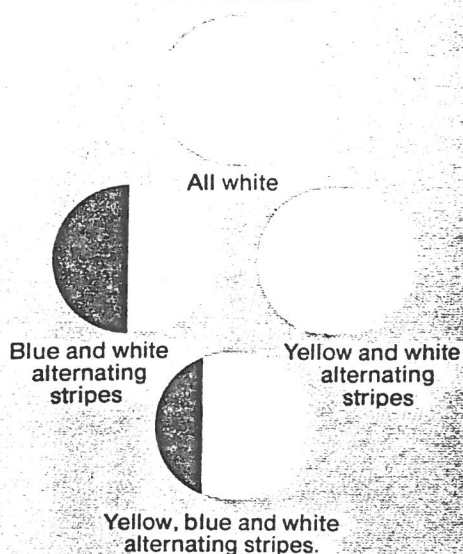
Hobie 12 is great as a trainer for junior sailors and exciting for experienced captains who want a little sailing challenge!



HOBIE 12

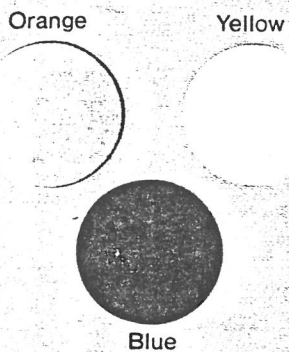
Specifications

SAIL COLORS



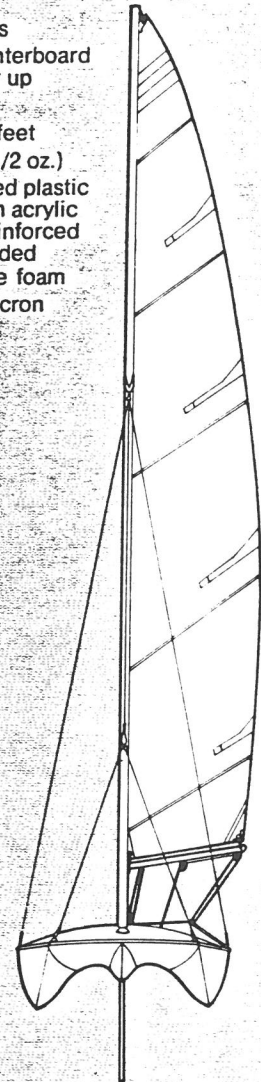
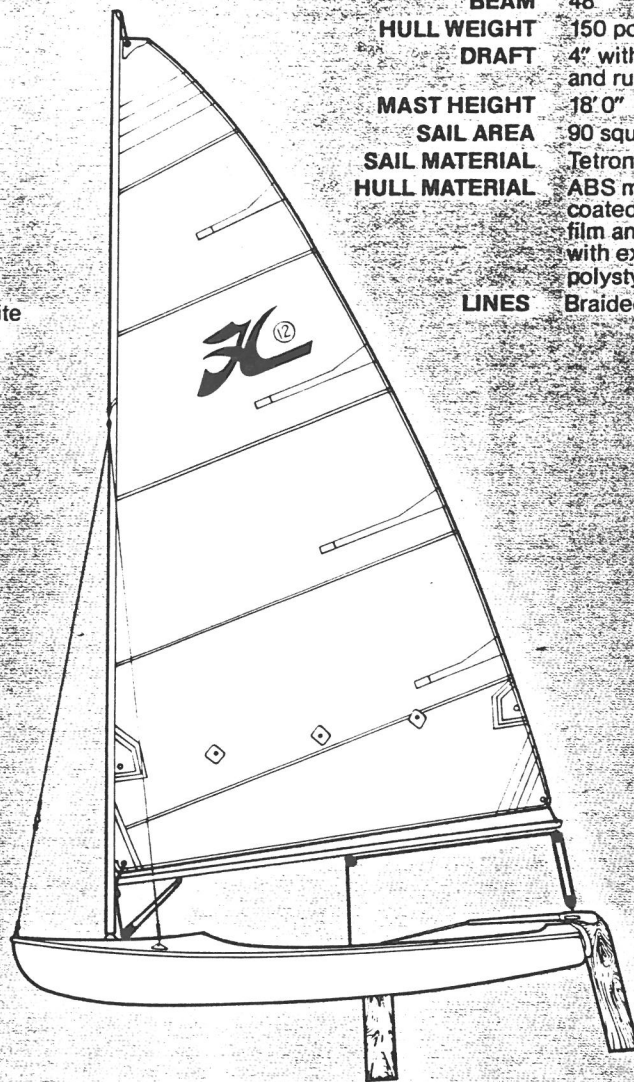
MAST, BOOM, AND
RUDDER ASSEMBLY ARE
ALUMINUM ALLOY;
RUDDER AND CENTERBOARD
ARE NATURAL TEAK.

DECK COLORS



All Hobie 12's have ivory hulls.

LENGTH OVERALL	11' 9"
BEAM	48"
HULL WEIGHT	150 pounds
DRAFT	4" with centerboard and rudder up
MAST HEIGHT	18' 0"
SAIL AREA	90 square feet
SAIL MATERIAL	Tetron (3-1/2 oz.)
HULL MATERIAL	ABS molded plastic coated with acrylic film and reinforced with expanded polystyrene foam
LINES	Braided Dacron



Contact your Hobie Dealer



Coast Catamaran Corp., 2026 McGaw Avenue, Irvine, CA. 92705

Sail, deck, hull and trampoline colors are subject to change without notice.