

NOTES:

1. THIS LOT IS LOCATED IN ZONE "X" ACCORDING TO THE FEDERAL EMERGENCY MANAGEMENT AGENCY'S FLOOD INSURANCE RATE MAP, COMMUNITY-PANEL NUMBER 3720311800 K DATED 6/2/06.
2. AREA= 0.55 AC.±
3. RATIO OF PRECISION = 1:10,000 +.

TABLE DISCLOSING LOCATION OF FOUND PROPERTY CORNERS FROM SAME AS INDICATED BY

BOOK 2910, PAGE 106

- Ⓐ BASE CONTROL LINE
- Ⓑ LINE CONTROL LINE
- Ⓒ S33°11'40"E 0.83'
- Ⓓ N65°19'32"W 0.10'
- Ⓔ S32°54'32"W 0.23'

NOTE: THE ABOVE FIGURES WERE DERIVED FROM AN ACTUAL SURVEY USING CONTROL POINTS AS SHOWN HEREON WITHIN THIS SUBDIVISION AS THE CONTROL BASE. BEARINGS AND DISTANCES OTHERWISE SHOWN HEREON ARE FROM BOOK 2910, PAGE 106

MAP BOOK 11, PAGE 11

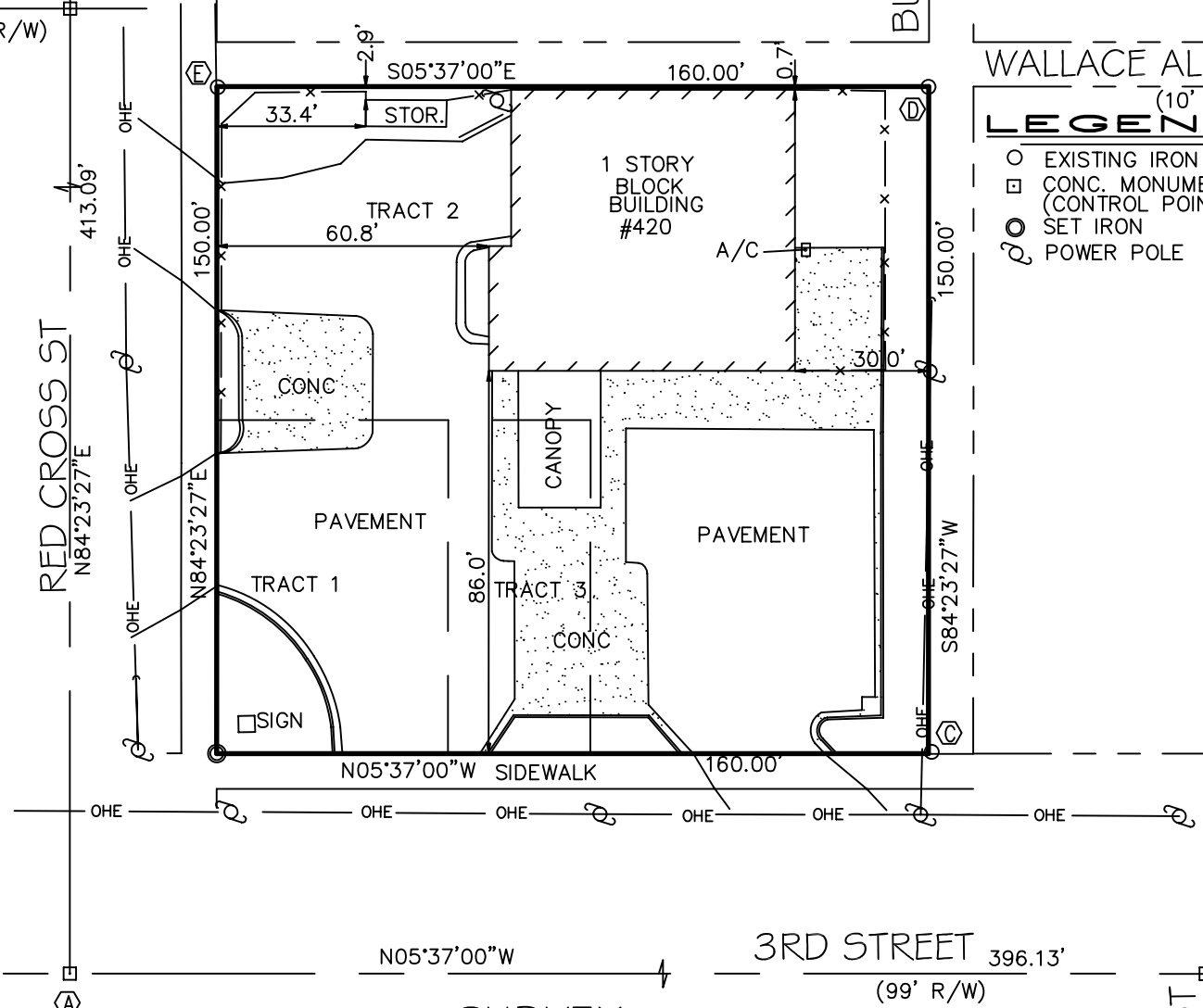
LOCATION MAP NOT TO SCALE

3RD STREET
(66' R/W)

BURCH ALLEY (10' R/W)

WALLACE ALLEY (10' R/W)
LEGEND

- EXISTING IRON
- ⊠ CONC. MONUMENT (CONTROL POINT)
- ⊙ SET IRON
- ⊕ POWER POLE



3RD STREET 396.13'
(99' R/W)

WALNUT ST (66' R/W)

SURVEY EXCLUSIVELY FOR

DAVID THOMPSON

PART OF LOTS 1,2,3 BLOCK 220, CITY OF WILMINGTON AS RECORDED IN BOOK 2910, PAGE 106, AND MAP BOOK 11, PAGE 11 OF THE NEW HANOVER COUNTY REGISTRY

WILMINGTON TOWNSHIP NEW HANOVER COUNTY NORTH CAROLINA
SCALE: 1" = 40' DECEMBER 12, 2006

ARNOLD W. CARSON PLS PC
406 NORTH THIRD STREET
WILMINGTON, NC 28401
(910) 772-9113

