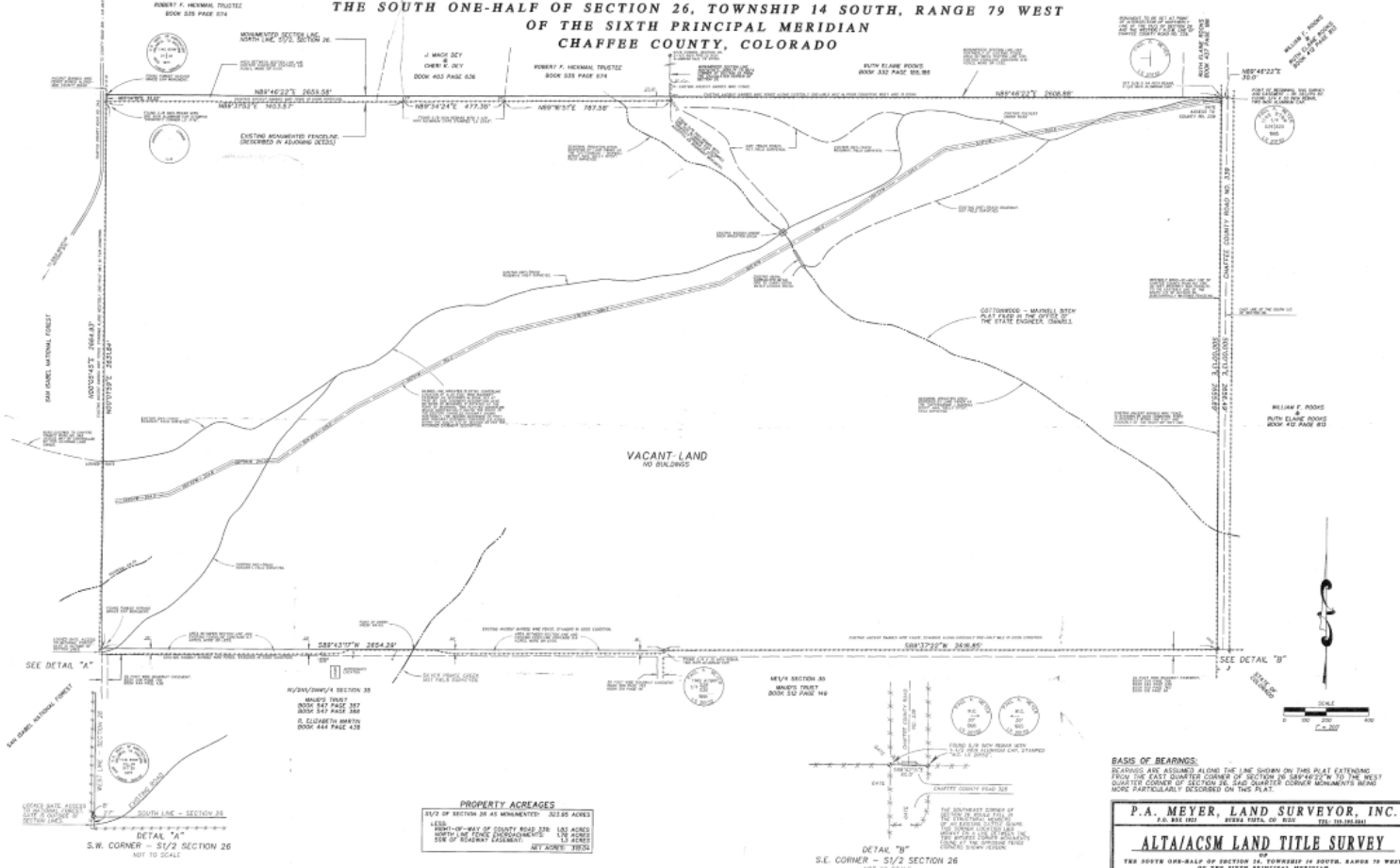


ALTA/ACSM LAND TITLE SURVEY

OF
 THE SOUTH ONE-HALF OF SECTION 26, TOWNSHIP 14 SOUTH, RANGE 79 WEST
 OF THE SIXTH PRINCIPAL MERIDIAN
 CHAFFEE COUNTY, COLORADO



PROPERTY ACRESSES

1/2 OF SECTION 26 AS MINUTE	312.65 ACRES
LESS	
1/2 WAY OF COUNTY ROAD 128	1.82 ACRES
NORTH-OF-RANGE CORRIDOR	1.28 ACRES
SEW OF RESIDENT ASSIGNMENT	1.28 ACRES
	NET ACRES 318.25

BASIS OF BEARINGS:
 BEARINGS ARE ASSUMED ALONG THE LINE SHOWN ON THIS PLAT EXTENDING FROM THE EAST QUARTER CORNER OF SECTION 26 NORTH 20° W TO THE WEST QUARTER CORNER OF SECTION 26. THE QUARTER CORNER MARKINGS SHOWN MORE PARTICULARLY DESCRIBED ON THIS PLAT.

P.A. MEYER, LAND SURVEYOR, INC.
 P.O. BOX 1001
 BOULDER, COLORADO 80501
 TEL: 440-2842

ALTA/ACSM LAND TITLE SURVEY
 THE SOUTH ONE-HALF OF SECTION 26, TOWNSHIP 14 SOUTH, RANGE 79 WEST
 OF THE SIXTH PRINCIPAL MERIDIAN
 CHAFFEE COUNTY, COLORADO

SHEET NO. 2 OF 2	PROJECT NO. 02040	SCALE: 1" = 200'
REVISED DRAWING	DATE: DECEMBER 21, 1995	DWG NO. 00040AL.E.CC