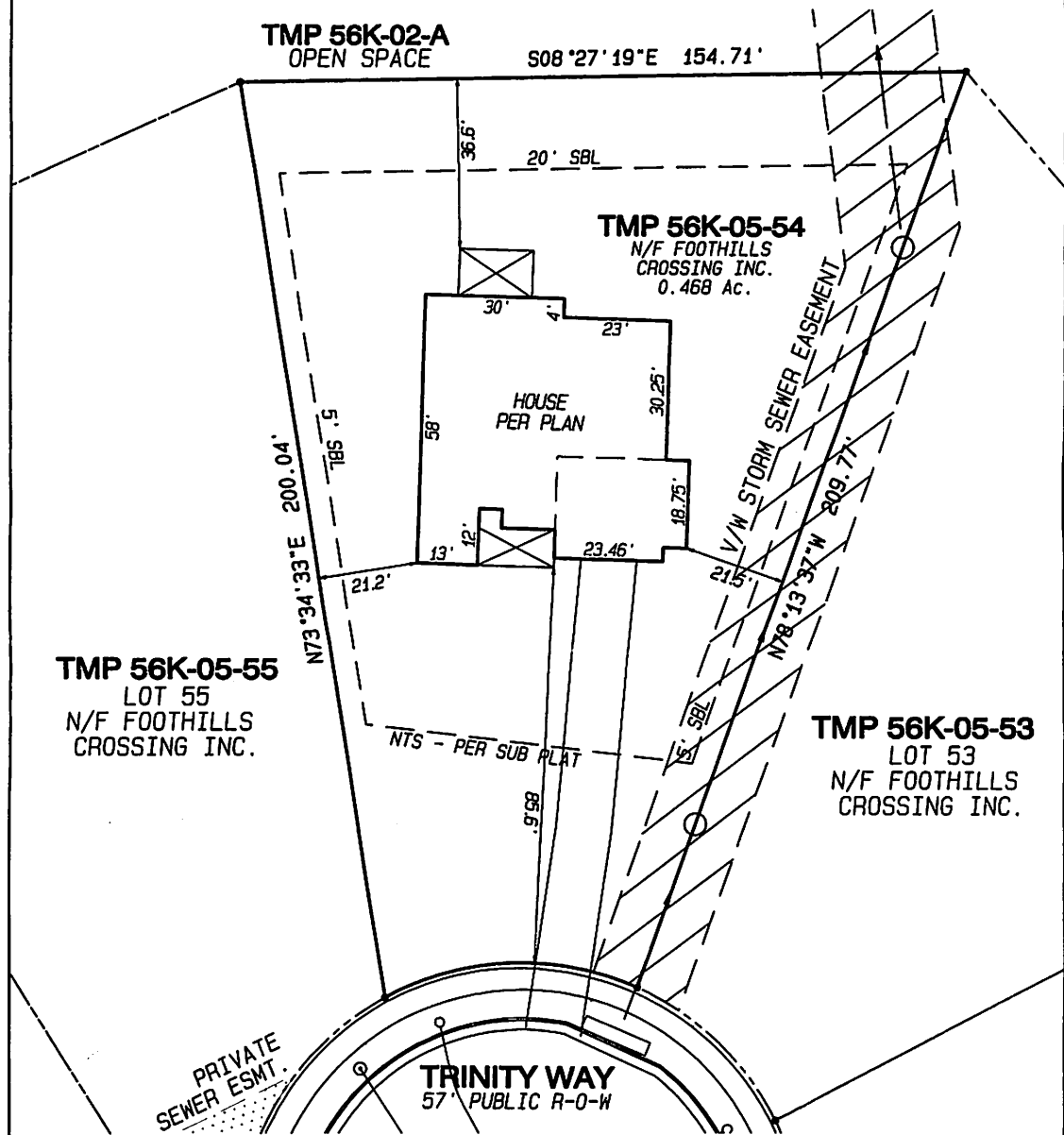


**PERMIT PLAN
LOT 54 FOOTHILL CROSSING**

**PHASE IV
WHITE HALL MAGISTERIAL DISTRICT
ALBEMARLE COUNTY, VIRGINIA**

PREPARED FOR: EVERGREEN HOME BUILDERS



SETBACKS
FRONT -
NOT TYPICAL SETBACK.
SHOWN PER SUBDIVISION PLAT
SIDE = 5' REAR = 20'

TOPOGRAPHY HAS NOT BEEN FIELD
VERIFIED. FINISHED FLOOR ELEVATIONS
MAY REQUIRE ADJUSTMENT BY THE BUILDER.

SUBDIVISION PLAT IS RECORDED AT DB 4769 p.262-271

NO TITLE REPORT PROVIDED. EASEMENTS OTHER
THAN THOSE SHOWN HEREON MAY EXIST ON THIS PROPERTY.

ALL LOTS ARE SERVED BY PUBLIC WATER AND SEWER.

SCALE 1" = 30'



SCALE IN FEET

ROUDABUSH, GALE & ASSOCIATES, INC.
ENGINEERS, SURVEYORS AND LAND PLANNERS



A PROFESSIONAL CORPORATION
SERVING VIRGINIA SINCE 1956



914 MONTICELLO ROAD - CHARLOTTESVILLE, VIRGINIA 22902
PHONE 434-677-0205 - FAX 434-298-6220 - EMAIL INFO@ROUDABUSH.COM

JANUARY 16, 2017

SCALE: 1" = 30'

FILE: 6234