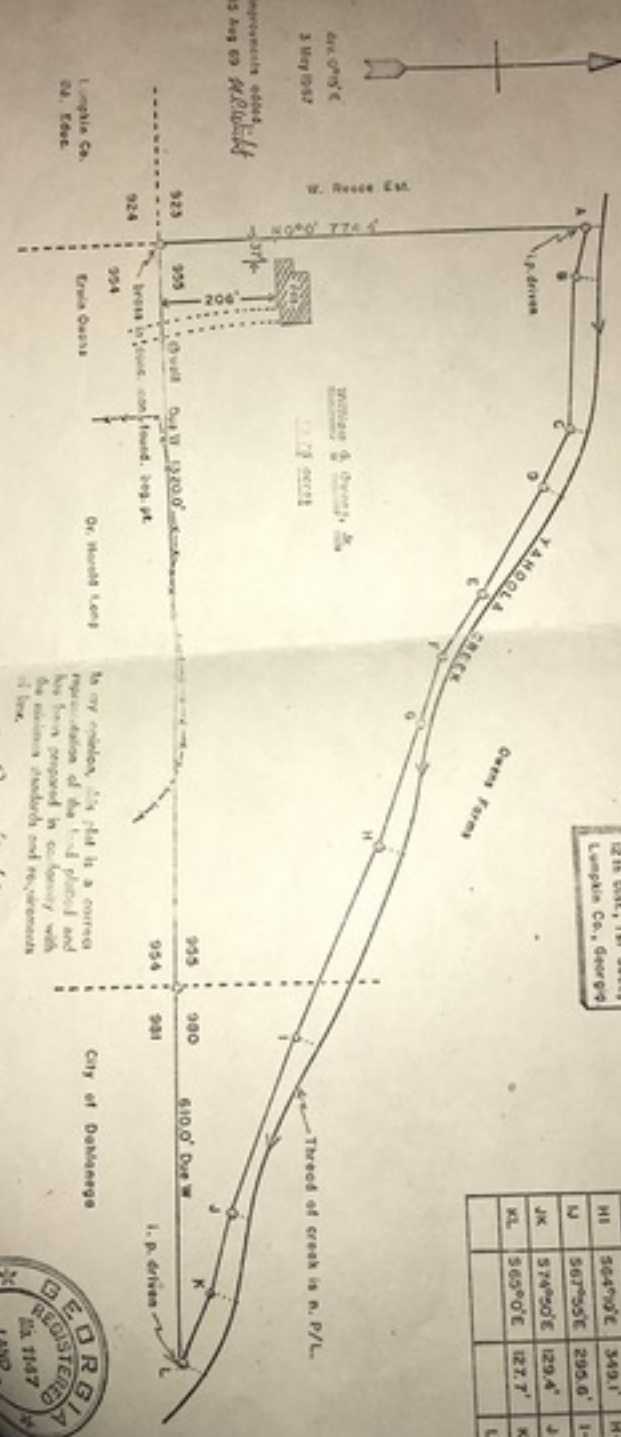


WILLIAM G. CURRIE, JR.

Property Survey

Line	Direction	Length	Dist to C
AB	57°33'35"E	103.9'	A-35'
BC	58°0'0"E	286.9'	9-40'
CD	56°0'45"E	119.4'	C-30'
DE	55°0'0"E	214.4'	D-40'
EF	55°4'45"E	143.6'	E-21'
FG	57°0'45"E	126.4'	F-20'
GH	56°0'45"E	210.5'	G-15'
HI	56°4'0"E	349.1'	H-45'
IJ	56°7'55"E	295.6'	I-40'
JK	57°0'0"E	129.4'	J-25'
KL	56°5'0"E	127.7'	K-45'
			L-45'



Part of L.L. 955
12th Dist, 1st Sheet,
Langhain Co., Georgia

Improvements added
15 Aug 69
W.G. Currie, Jr.

Langhain Co.
Ga. State

In my opinion, this plan is a correct
representation of the land parcel and
has been prepared in conformity with
the minimum standards and requirements
of law.

W.G. Currie, Jr.
Surveyor



Scale 1" = 100'