

JOHN R P &
DOROTHY H HAMILTON
TM# 67-6
DB:1360 PG:567

DONALD &
MARGARET E VREULS
TM# 67-6D
INST# 000003969

LONG MEADOW 1810 LLC
TM# 67-6F
INST# 070012800

ROBERT P &
KELLEY D FLANDERS
TM# 67-6G
DB:1438 PG: 93
OLD: 5.366 ACS
NEW: 24.743 ACS

PARCEL "B"
14.949 ACS

PARCEL "A"
4.428 ACS

EXISTING HOME

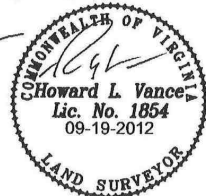
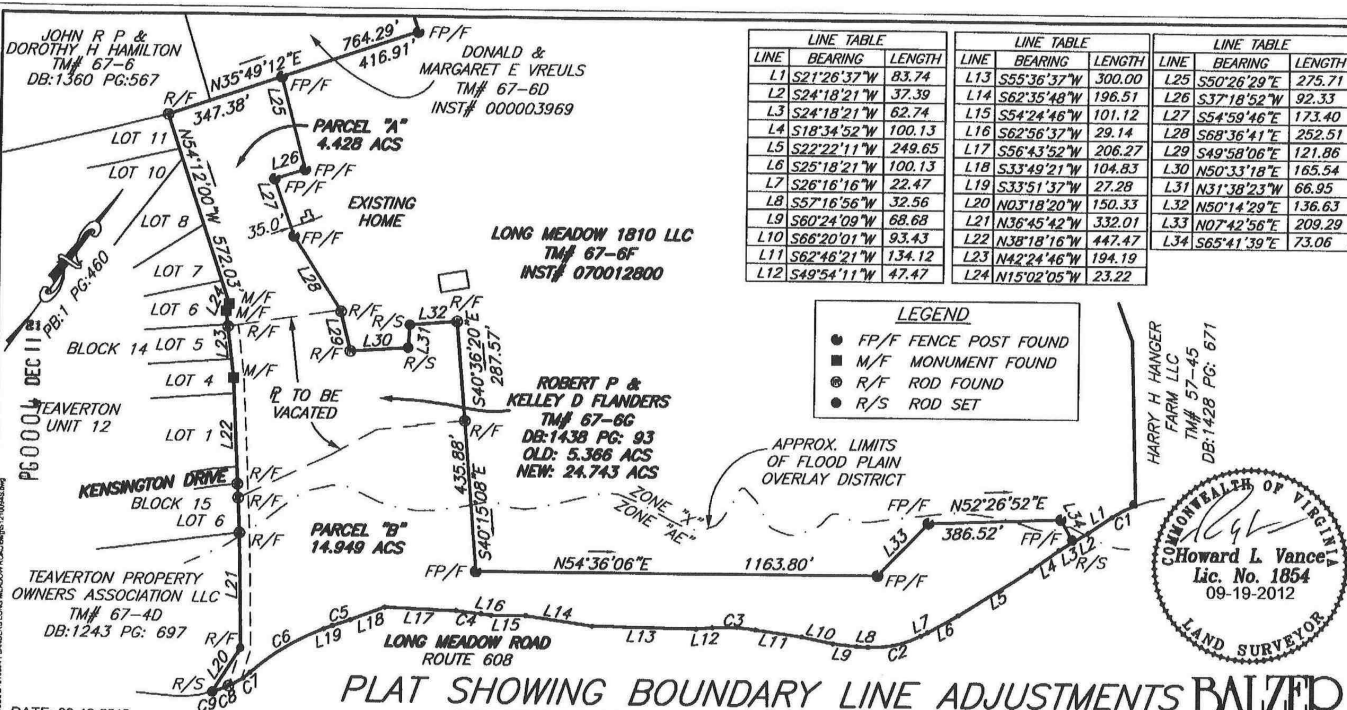
| LINE | BEARING | LENGTH |
|------|-------------|--------|
| L1 | S21°26'37"W | 83.74 |
| L2 | S24°18'21"W | 37.39 |
| L3 | S24°18'21"W | 62.74 |
| L4 | S18°34'52"W | 100.13 |
| L5 | S22°22'11"W | 249.65 |
| L6 | S25°18'21"W | 100.13 |
| L7 | S26°16'16"W | 22.47 |
| L8 | S57°16'56"W | 32.56 |
| L9 | S60°24'09"W | 68.68 |
| L10 | S66°20'01"W | 93.43 |
| L11 | S62°46'21"W | 134.12 |
| L12 | S49°54'11"W | 47.47 |

| LINE | BEARING | LENGTH |
|------|-------------|--------|
| L13 | S55°36'37"W | 300.00 |
| L14 | S62°35'48"W | 196.51 |
| L15 | S54°24'46"W | 101.12 |
| L16 | S62°56'37"W | 29.14 |
| L17 | S56°43'52"W | 206.27 |
| L18 | S33°49'21"W | 104.83 |
| L19 | S33°51'37"W | 27.28 |
| L20 | N03°18'20"W | 150.33 |
| L21 | N36°45'42"W | 332.01 |
| L22 | N38°18'16"W | 447.47 |
| L23 | N42°24'46"W | 194.19 |
| L24 | N15°02'05"W | 23.22 |

| LINE | BEARING | LENGTH |
|------|-------------|--------|
| L25 | S50°26'29"E | 275.71 |
| L26 | S37°18'52"W | 92.33 |
| L27 | S54°59'46"E | 173.40 |
| L28 | S68°36'41"E | 252.51 |
| L29 | S49°58'06"E | 121.86 |
| L30 | N50°33'18"E | 165.54 |
| L31 | N31°38'23"W | 66.95 |
| L32 | N50°14'29"E | 136.63 |
| L33 | N07°42'56"E | 209.29 |
| L34 | S65°41'39"E | 73.06 |

LEGEND

- FP/F FENCE POST FOUND
- M/F MONUMENT FOUND
- ⊙ R/F ROD FOUND
- ⊙ R/S ROD SET



**PLAT SHOWING BOUNDARY LINE ADJUSTMENTS
BETWEEN TAX MAPS #67-6F & #67-6G**



DATE: 09-19-2012
SCALE: 1" = 300'
JOB NO: S1210094
DRAWN BY: DEH
SHEET 2 OF 2

WAYNE DISTRICT
COUNTY OF AUGUSTA, VIRGINIA
PLANNERS • ARCHITECTS • ENGINEERS • SURVEYORS
ROANOKE • RICHMOND • NEW RIVER VALLEY • SHENANDOAH VALLEY
1561 Commerce Road • Suite 401 • Varona, Virginia 24482 • Phone (540) 248-3220 • Fax (540) 248-3221

REFLECTING TOMORROW