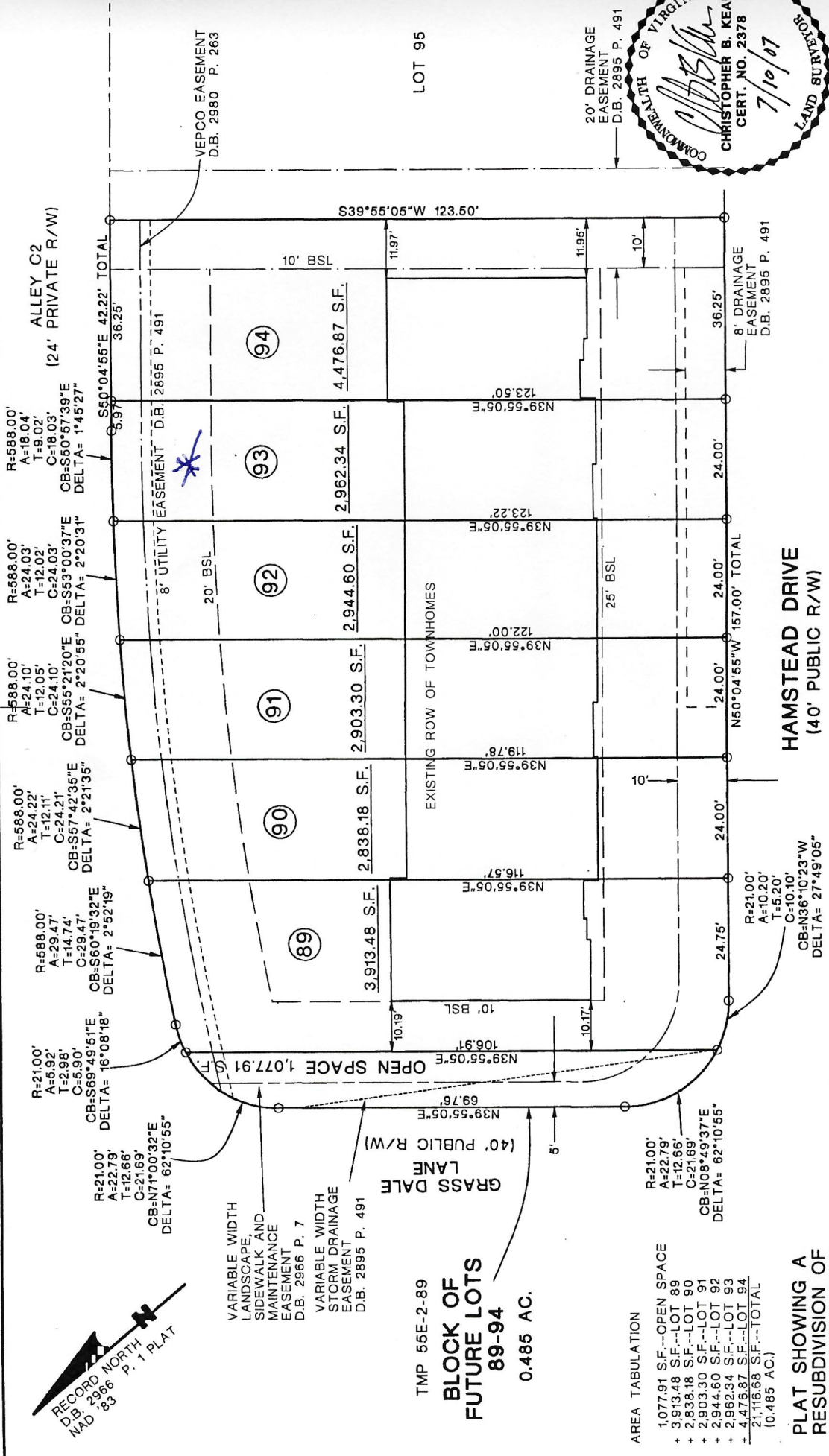




RECORD NORTH
 D.B. 2966 P. 1 PLAT
 MAD '83



VEPCO EASEMENT
 D.B. 2980 P. 263

ALLEY C2
 (24' PRIVATE R/W)

8" UTILITY EASEMENT D.B. 2895 P. 491

EXISTING ROW OF TOWNHOMES

HAMSTEAD DRIVE
 (40' PUBLIC R/W)

8' DRAINAGE EASEMENT D.B. 2895 P. 491

20' DRAINAGE EASEMENT D.B. 2895 P. 491

LOT 95

20' DRAINAGE EASEMENT D.B. 2895 P. 491

8' DRAINAGE EASEMENT D.B. 2895 P. 491

20' DRAINAGE EASEMENT D.B. 2895 P. 491

8' DRAINAGE EASEMENT D.B. 2895 P. 491

20' DRAINAGE EASEMENT D.B. 2895 P. 491

8' DRAINAGE EASEMENT D.B. 2895 P. 491

VEPCO EASEMENT D.B. 2980 P. 263

ALLEY C2 (24' PRIVATE R/W)

8" UTILITY EASEMENT D.B. 2895 P. 491

EXISTING ROW OF TOWNHOMES

HAMSTEAD DRIVE (40' PUBLIC R/W)

8' DRAINAGE EASEMENT D.B. 2895 P. 491

20' DRAINAGE EASEMENT D.B. 2895 P. 491

LOT 95

20' DRAINAGE EASEMENT D.B. 2895 P. 491

8' DRAINAGE EASEMENT D.B. 2895 P. 491

20' DRAINAGE EASEMENT D.B. 2895 P. 491

8' DRAINAGE EASEMENT D.B. 2895 P. 491

20' DRAINAGE EASEMENT D.B. 2895 P. 491

8' DRAINAGE EASEMENT D.B. 2895 P. 491

TMP 55E-2-89
 BLOCK OF FUTURE LOTS 89-94
 0.485 AC.

AREA TABULATION

1,077.91 S.F.--OPEN SPACE
+ 3,913.48 S.F.--LOT 89
+ 2,838.18 S.F.--LOT 90
+ 2,903.30 S.F.--LOT 91
+ 2,944.60 S.F.--LOT 92
+ 2,962.34 S.F.--LOT 93
+ 4,476.87 S.F.--LOT 94
21,116.68 S.F.--TOTAL
(0.485 AC.)

PLAT SHOWING A RESUBDIVISION OF BLOCK OF FUTURE LOTS 89-94 BLOCK 2 BALLARD FIELD WHITE HALL DISTRICT ALBEMARLE COUNTY, VIRGINIA SCALE: 1" = 20' JUNE 11, 2007 REVISED: JULY 10, 2007

IRONS SET AT ALL CORNERS UNLESS OTHERWISE NOTED.

THOMAS B. LINCOLN LAND SURVEYOR, INC.
 632 BERKMAR CIRCLE
 CHARLOTTESVILLE, VIRGINIA
 434-974-1417



TMODEL SERVER1 DATA\9 105\ 105005710.PRO 105-0057

SHEET 2 OF 2

Deed Book 3476 PS-671