

CLORENT LANE  
R/W VARIES  
D.B. 3941, PG. 678, 683 (PLAT)

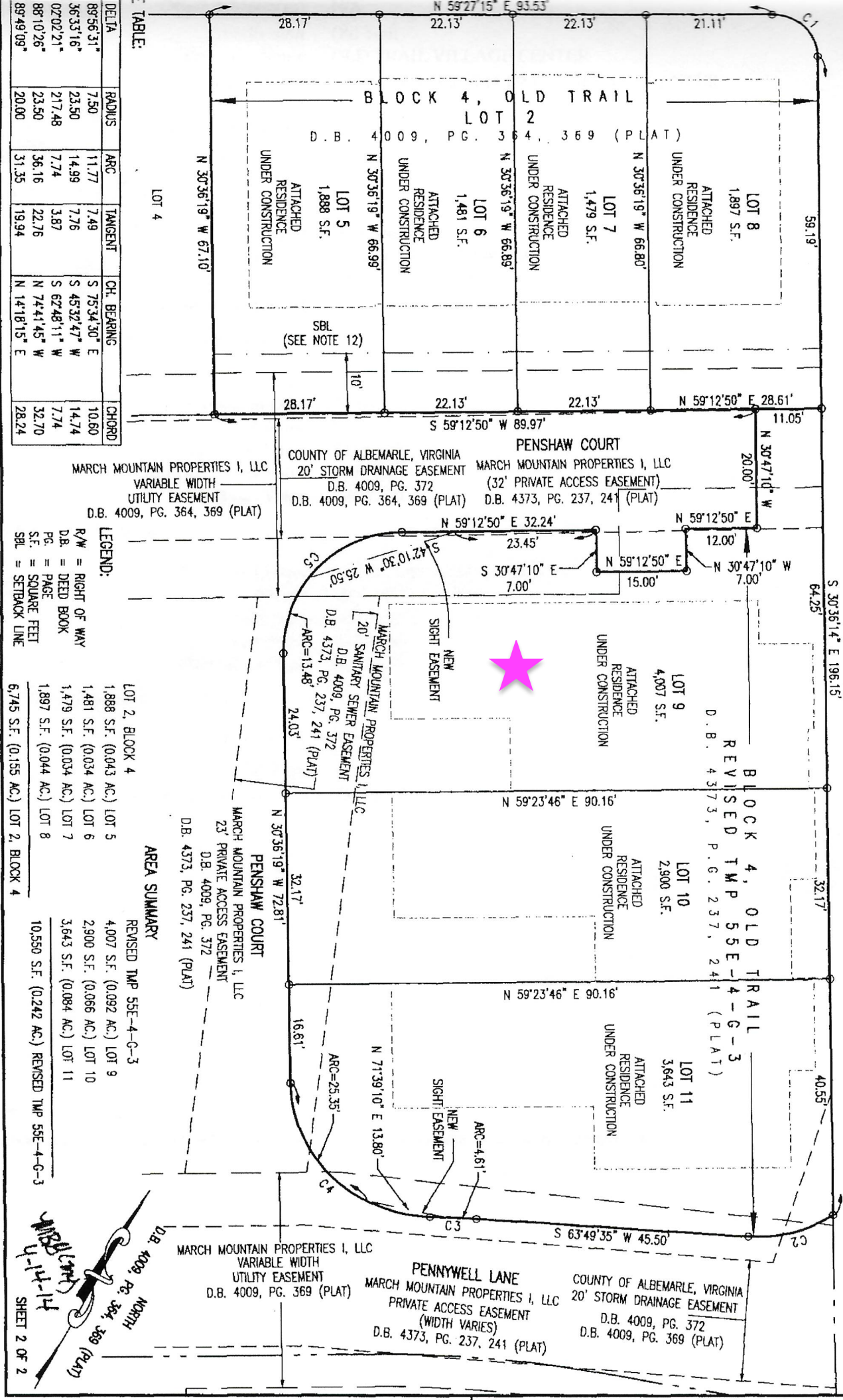


TABLE:

DELTA	RADIUS	ARC	TANGENT	CH. BEARING	CHORD
89°56'31"	7.50	11.77	7.49	S 75°34'30" E	10.60
36°33'16"	23.50	14.99	7.76	S 45°32'47" W	14.74
02°02'21"	217.48	7.74	3.87	S 62°48'11" W	7.74
88°10'26"	23.50	36.16	22.76	N 74°41'45" W	32.70
89°49'09"	20.00	31.35	19.94	N 14°18'15" E	28.24

LEGEND:  
R/W = RIGHT OF WAY  
D.B. = DEED BOOK  
PG. = PAGE  
S.F. = SQUARE FEET  
SBL = SETBACK LINE

LOT 2, BLOCK 4  
1,888 S.F. (0.043 AC.) LOT 5  
1,481 S.F. (0.034 AC.) LOT 6  
1,479 S.F. (0.034 AC.) LOT 7  
1,897 S.F. (0.044 AC.) LOT 8  
6,745 S.F. (0.155 AC.) LOT 2, BLOCK 4

AREA SUMMARY  
REVISED TMP 55E-4-G-3  
4,007 S.F. (0.092 AC.) LOT 9  
2,900 S.F. (0.066 AC.) LOT 10  
3,643 S.F. (0.084 AC.) LOT 11  
10,550 S.F. (0.242 AC.) REVISED TMP 55E-4-G-3

MARCH MOUNTAIN PROPERTIES I, LLC  
VARIABLE WIDTH UTILITY EASEMENT  
D.B. 4009, PG. 364, 369 (PLAT)

PENNYWELL LANE  
MARCH MOUNTAIN PROPERTIES I, LLC  
PRIVATE ACCESS EASEMENT (WIDTH VARIES)  
D.B. 4373, PG. 237, 241 (PLAT)

COUNTY OF ALBEMARLE, VIRGINIA  
20' STORM DRAINAGE EASEMENT  
D.B. 4009, PG. 372  
D.B. 4009, PG. 369 (PLAT)

4-14-14  
SHEET 2 OF 2