

SIX ROOMS AND BIG PORCH

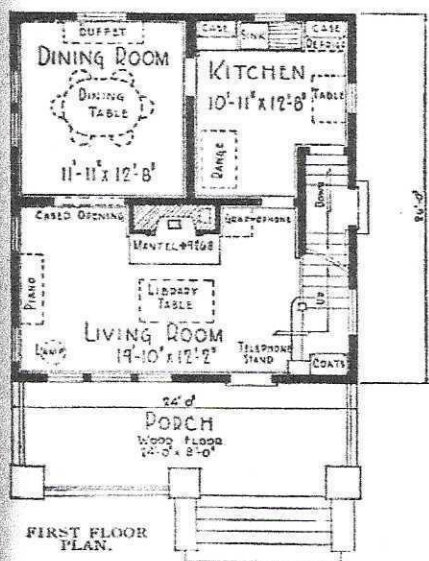


See Description of "Honor Bilt" Houses on Page 9.

Honor Bilt

The Fullerton
No. 3205X "Already Cut" and Fitted.
\$2,243⁰⁰

Can be built on a lot 30 feet wide.



FIRST FLOOR PLAN.

At the price quoted we will furnish all the material to build this six-room house consisting of lumber, siding, lath, asphalt shingles, mill work, medicine case, kitchen cabinets, flooring, porch ceiling, finishing lumber, colonial mantel, building paper, eaves trough, down spouts, sash weights, hardware and painting material. We guarantee enough material to build this house. Price does not include cement brick or plaster.

THIS style of home has become very popular in the past few years. It adapts itself equally well to city lots or country estates, and in few other styles can you get so much space for such a small outlay of money!

First Floor The living room is 19 feet 10 inches wide and 12 feet 2 inches deep. A colonial mantel and fireplace is opposite the entrance. The other stairway leading to the second floor is immediately to the right of entrance. Think of having plenty of room for the piano, davenport, table and chairs. In fact, there is not a dark or stuffy room in the entire house. A cased opening leads from the living room into the dining room, which, as the floor plans show, will accommodate a full size dining table, chairs and buffet without crowding. The kitchen may be entered from either the dining room or living room, as well as from the outside by a grade entrance which also leads to the basement.

Second Floor Three bedrooms and a bathroom open off the hall. Note the fine large closet in each bedroom and the closet in the bathroom for clean towels, bed clothing, etc.

We furnish our best "Quality Guaranteed" mill work in beautiful grain and color. See pages 86 and 87. Windows are made of clear California white pine, with good quality glass set in with best grade of putty.

Front door is our Franklin door. Inside doors are two vertical panel design, of white pine with fir panels, all inside trim is clear yellow pine.

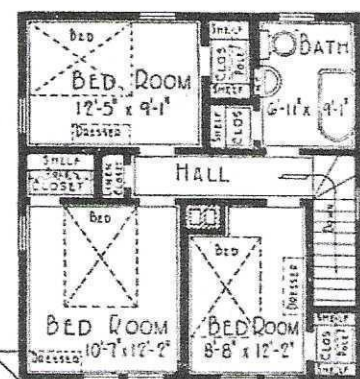
Floors All inside flooring is clear yellow pine. Porch floor, clear edge grain fir flooring is furnished.

Built on a concrete foundation with brick above grade line, excavated basement under entire building. Frame construction, sided with clear cypress bevel siding, roofed with Oriental Asphalt Slate Surfaced Shingles. All framing lumber is No. 1 quality yellow pine.

Paint furnished for three outside coats, varnish and wood filler for all inside doors and trim.

Stratford Design hardware, see page 118.

Height of Ceilings Basement, 7 feet from floor to joists, with concrete floor. First floor, 9 feet from floor to ceiling. Second floor, 8 feet 2 inches from floor to ceiling.



PORCH ROOF

OPTIONS

Sheet Plaster and White Plaster Finish to take the place of wood lath. \$100.00 extra. See page 88.

Oak Stairs, Trim and Floor for living room and dining room. \$120.00 extra.



The FULLERTON INTERIORS

Above—The reconstructed interior of The Fullerton presents the use of two pairs of living room furniture. The illustration shows how beautifully one style of European furniture will fit the living room plan.

Below—This splendid bedroom is a beautiful room of convenience to the bedroom. See pages 194 and 195 for detailed description of the interior.

Center—A spacious, well furnished living room is a source of comfort pleasure to the owner. Here social gatherings enjoy a general manner of hospitality, comfort and convenience.

"The threshold of happiness and comfort is at the door of every man's home."

—EDWARD TOWN

Below—Another view of the living room, showing the open fireplace to the second floor, and the open closet to the landing.

Below—A splendid bedroom of glass and marble.

See Description of The Fullerton Home on opposite Page

Page 67