

LEGEND & TYPICAL EASEMENTS



GENERAL NOTES

ALL ROADS SHOWN ARE DESIGNATED AS "PRIVATE" FRONT LOT CORNERS ARE REFERENCED WITH IRON PINS SET IN SIDE LOT LINES AS SHOWN.

THERE IS A 60' RIGHT-OF-WAY, DRAINAGE, UTILITY, AND CONSTRUCTION EASEMENT ALONG ALL FRONT LOT LINES, 30' EACH SIDE OF LOT LINE.

THERE IS A 30' DRAINAGE, UTILITY AND CONSTRUCTION EASEMENT, 15' EITHER SIDE OF REAR LOT LINES.

THERE IS A 30' DRAINAGE, UTILITY AND CONSTRUCTION EASEMENT, 15' EITHER SIDE OF SIDE LOT LINES.

ALL CUL-DE-SACS HAVE A 30' RADIUS RIGHT-OF-WAY FROM CENTER OF CUL-DE-SAC.

THERE IS A 6' RESERVED STRIP AROUND ENTIRE EXTERIOR BOUNDARY, AS SHOWN IN DETAIL.

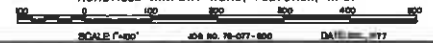
ALL BEARINGS SHOWN REFER TO THE NORTH CAROLINA STATE COORDINATE GRID SYSTEM.

THIS MAP IS A SUBDIVISION OF AN INTERIOR PORTION OF A TRACT OF LAND OWNED BY HIGH VISTA COUNTRY CLUB, INC. PLAT RECORDED IN BOOK 11 AT PAGE 3.

REF. DEED BOOK 547, PAGE 989, HENDERSON CO., N.C.

BLOCK III SHEET 3 HIGH VISTA COUNTRY CLUB, INC.

MILLS RIVER TWP, HENDERSON COUNTY, N.C.
MATHESON, HINTZ & ASSOCIATES
 CONSULTING ENGINEERS AND LAND SURVEYORS
 ASHEVILLE AIRPORT ROAD, FLETCHER, N. C.



STATE OF NORTH CAROLINA
 COUNTY OF HENDERSON
 I, **MATHESON, HINTZ & ASSOCIATES**, a duly qualified and licensed professional engineering and land surveying firm, do hereby certify that the above and foregoing plat is a true and correct copy of the original as recorded in my office, and that the same has been duly filed for record in the office of the Register of Deeds for Henderson County, North Carolina, on this 22nd day of **APRIL**, 2011.

MATHESON, HINTZ & ASSOCIATES
 REGISTERED PROFESSIONAL ENGINEERS AND LAND SURVEYORS
 1000 W. HICKORY STREET, SUITE 200
 ASHEVILLE, NORTH CAROLINA 28701
 PHONE: 828.251.1111
 FAX: 828.251.1112
 WWW.MHA-SURV.COM

REGISTER OF DEEDS
 HENDERSON COUNTY, N.C.
 1000 W. HICKORY STREET, SUITE 200
 ASHEVILLE, NORTH CAROLINA 28701
 PHONE: 828.251.1111
 FAX: 828.251.1112
 WWW.HENDERSONCOUNTY-NC.GOV