



1402  
JEFFERSON  
STREET  
SAVANNAH

1402JEFFERSON.COM

2 BEDS | 2.5 BATHS | 1,088 SF

### FEATURES

- Circa 1901
- Historic Corner Lot
- End-Unit
- Curated Finishes
- Multiple Fireplaces
- Private Courtyard



Bold, bright, and anything but cookie-cutter—this end-unit townhouse is a standout from the moment you walk inside. Exposed brick, clean lines, and curated finishes come together to create a space that feels both elevated and full of modern personality. At the heart of the home, the kitchen showcases undeniable character and makes an unforgettable impression. The main-level half bath is anything but an afterthought, showcasing a custom vanity and modern detailing that carry the home’s design throughout. Upstairs, two spacious bedrooms each feature updated en-suite bathrooms, where trendy design, glass enclosures, and thoughtfully selected finishes create spaces that are both functional and visually memorable. A private courtyard adds an outdoor element and creates an extension of the living space. Distinctive in design and thoughtfully executed throughout, this home offers a refreshing departure from the ordinary.

**RON MELANDER**  
**JORDAN GRAY**  
**912.441.7124**



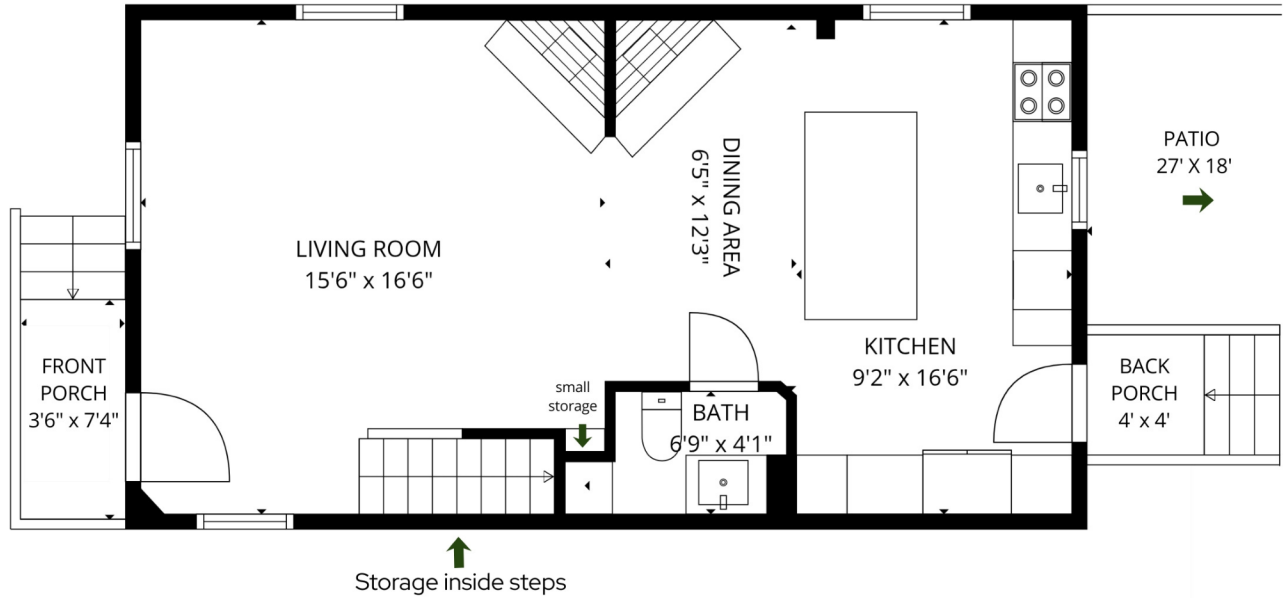
KELLER WILLIAMS  
REALTY  
SAVANNAH DOWNTOWN  
912.232.8580



SAVANNAHHISTORICPROPERTIES.COM

Each office is independently owned and operated.

## 1st Floor



## 2nd Floor

