

# Summer **Safety** Reminders for Kidney Patients

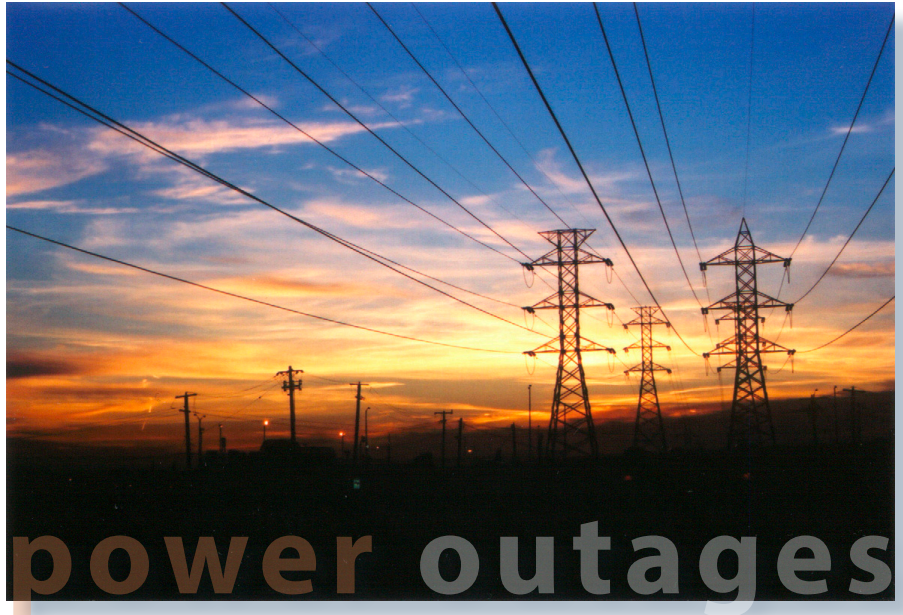
Be ready for the **Summer Heat** of Southern California!

## Power Outages

Extreme heat can impact your power!

When the temperature rises, so does the usage of electricity. When the power system cannot support the increase in energy usage, we may experience a power outage. These outages may be planned or can occur without warning. They could last for about one hour or for several days.

Call your power company to learn more about how a power outage may affect your area and always be prepared.



## Wildfires

As the temperatures rise, so does the risk for wildfires. Wildfires can affect businesses, freeways, surface streets and may even require an evacuation of the affected area. Be prepared to make plans if a wildfire affects your ability to get to dialysis for any reason.

Also, if you live in an area that is susceptible to wildfires, learn how to protect your home by contacting Cal Fire at [www.calfire.gov](http://www.calfire.gov) or by calling 1-559-222-3714.

For information about the status of your dialysis facility during one of the events above, contact:  
HealthInsight ESRD Network 18, Monday - Friday, 8:00 am - 4:30 pm at 1-800-637-4767