

Quicker than emails.
Better than WhatsApp.
Less soul destroying than paper.

Executive Summary



Introducing SymTerra

- ✔ UK based SaaS site reporting, compliance and assurance solution
- ✔ Out of the box solution used globally by 160+ companies
- ✔ We offer a scalable and flexible pricing model

Our Unique Strengths & Capabilities

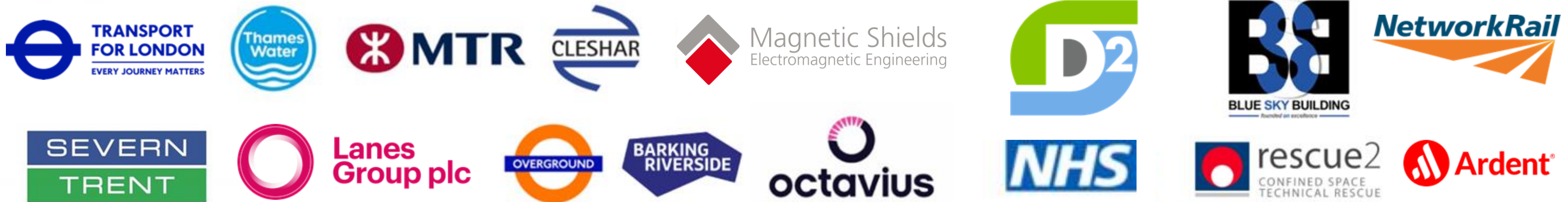
- ✔ We deliver a 5x ROI on the software cost invested in time and resources saved
- ✔ We play well with other systems, acting as a data pipeline
- ✔ You can get started in less than 30 minutes
- ✔ Ranked 4.9 / 5.0 by our users

Proposed Solution

- ✔ Overview of product:
<https://www.youtube.com/@symterra/featured>
- ✔ Fully meet capabilities requested
- ✔ Technical solution is best in class built on Google Cloud stack – promising 99.9% availability



Used by



Featured in



Trusted by many.

The way teams communicate and report is structured for failure



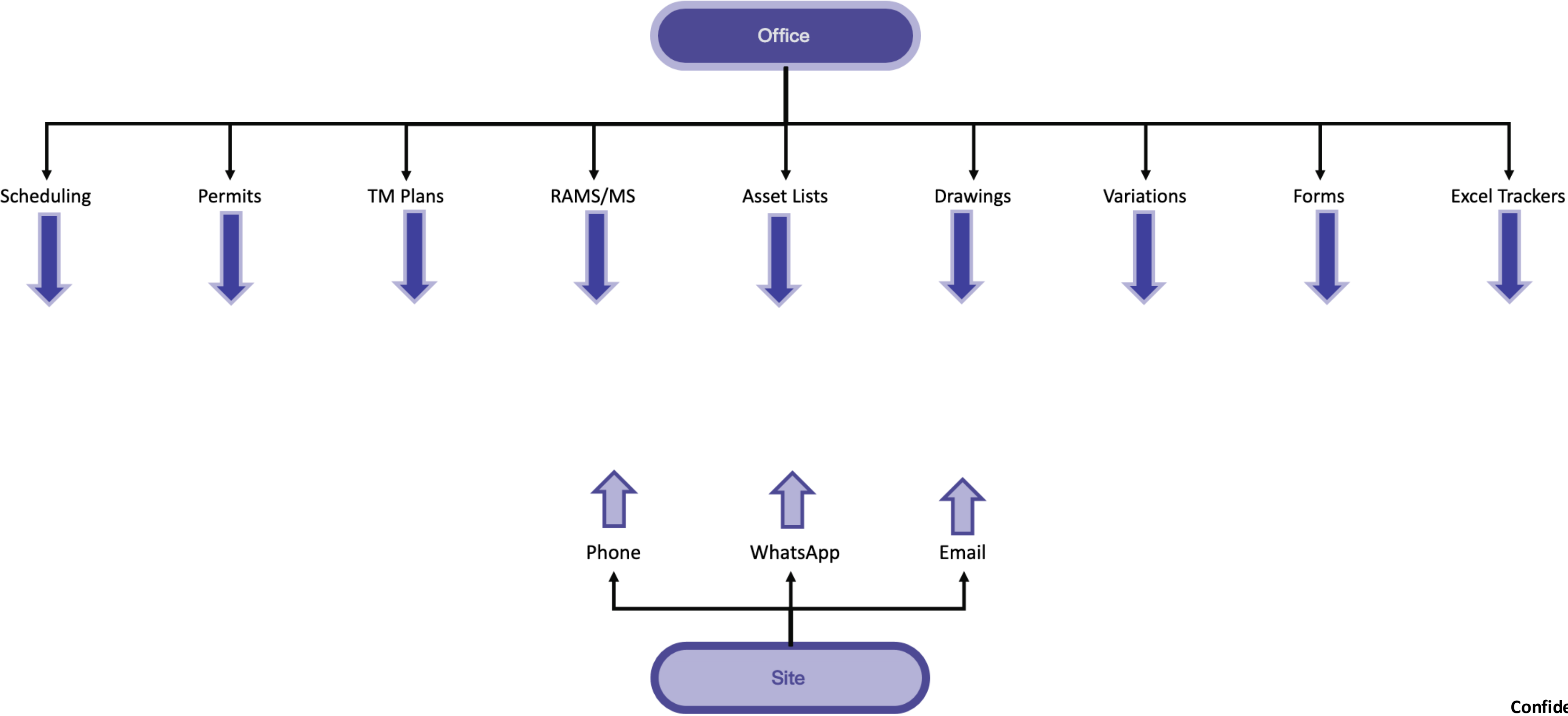
The status quo

- **Tech stack:** Multiple siloed, non-integrated top-down products. The norm is Excel, Paper and WhatsApp
- **Work environment:** On their feet firefighting
- **Role responsibility:** Delivery of works, info hunting, trying to mitigate a commercial dispute
TL;DR: Everything!

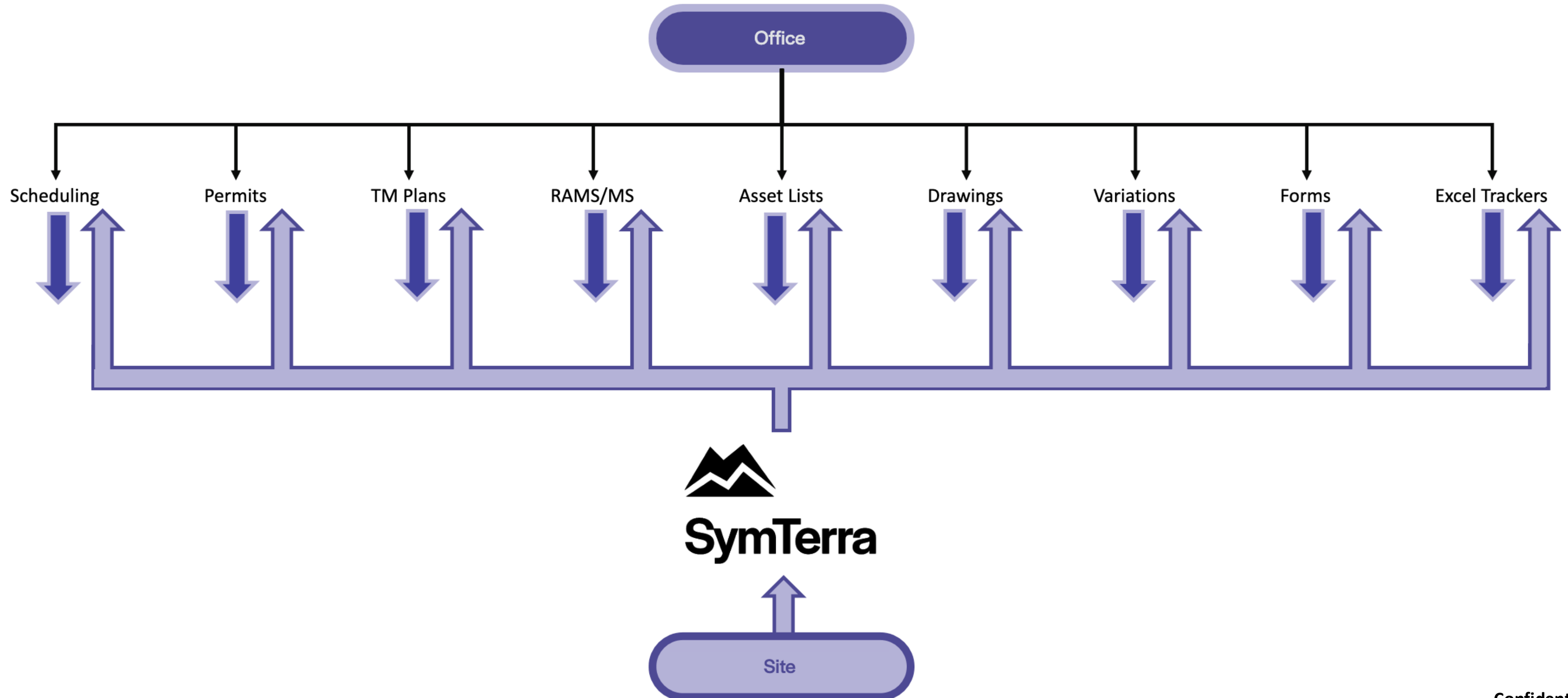
Competitors products

- Legacy point solutions for different areas that don't talk to each. Or one system trying to doing everything but not doing any of it well
- Low usage and engagement due to complex and outdated UI - "do not work faster than pen or paper"
- Don't allow a chaotic and fragmented supply chain to communicate

Communication is broken. There is a gap between field teams and office ...

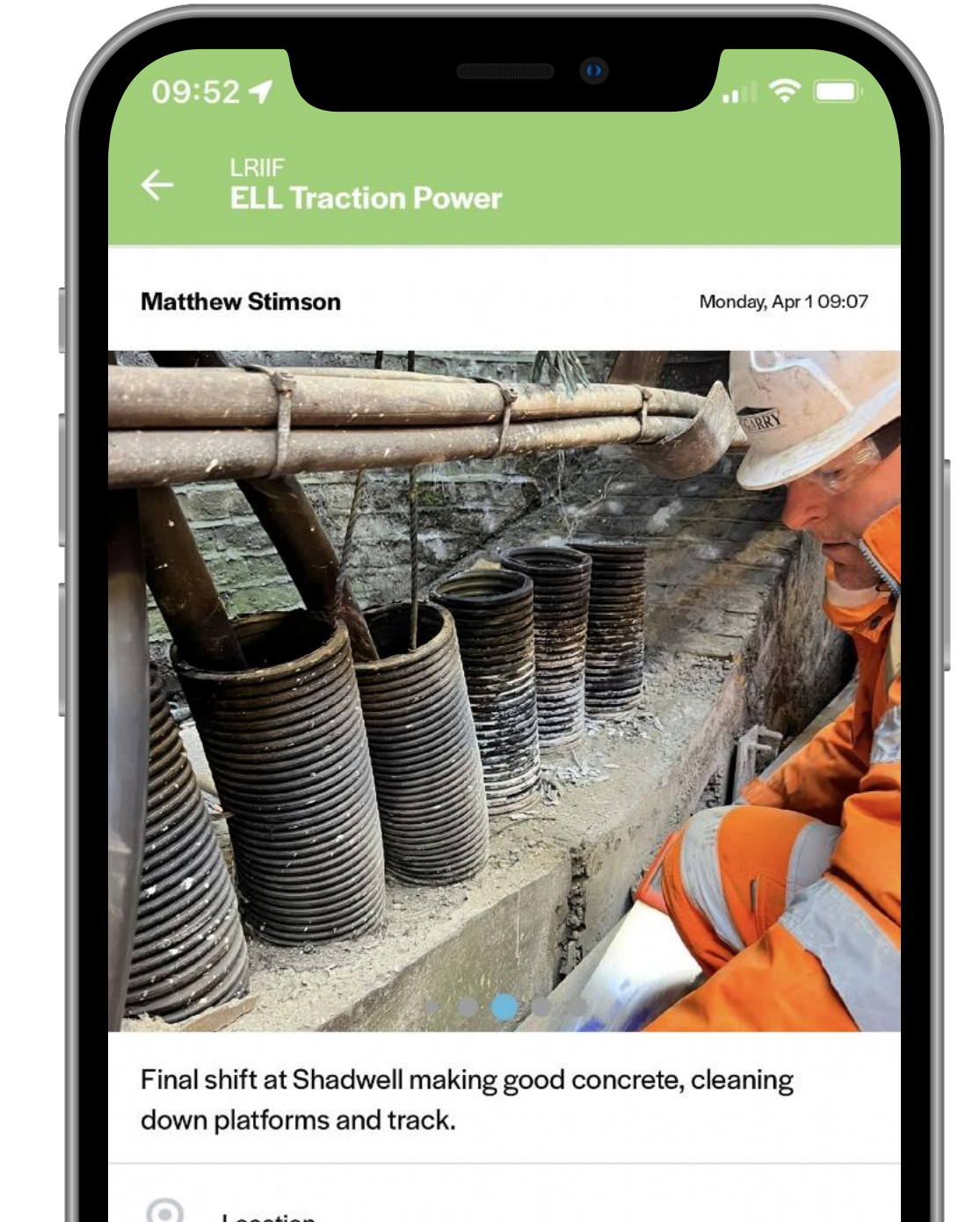
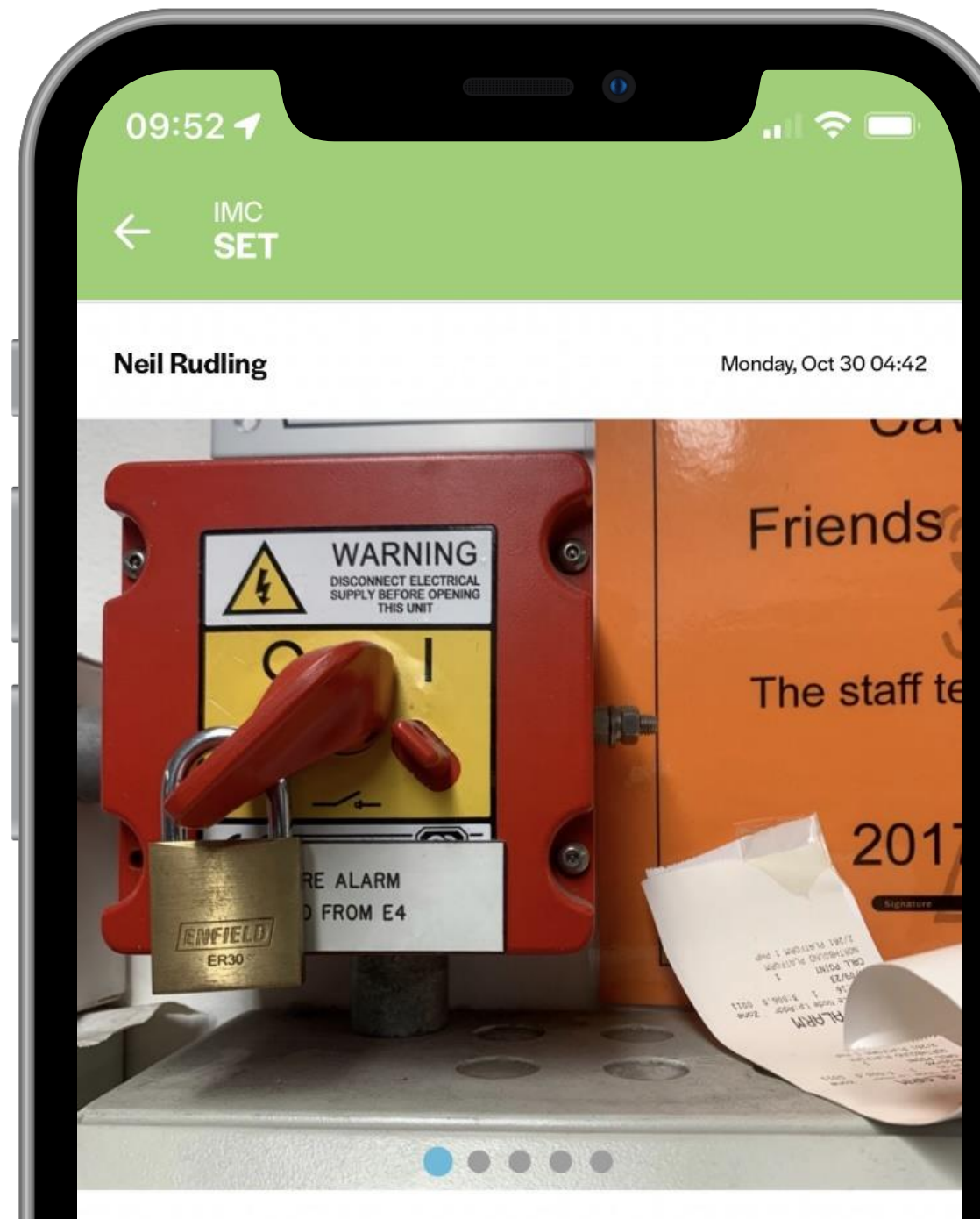
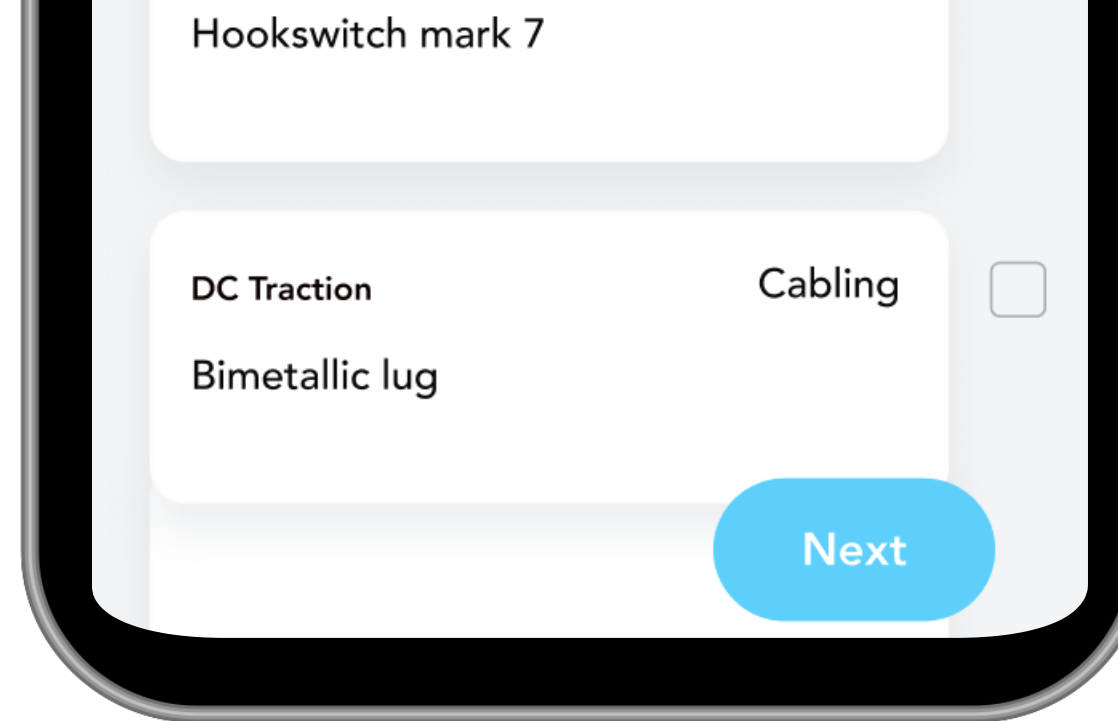


... Which is where SymTerra comes in



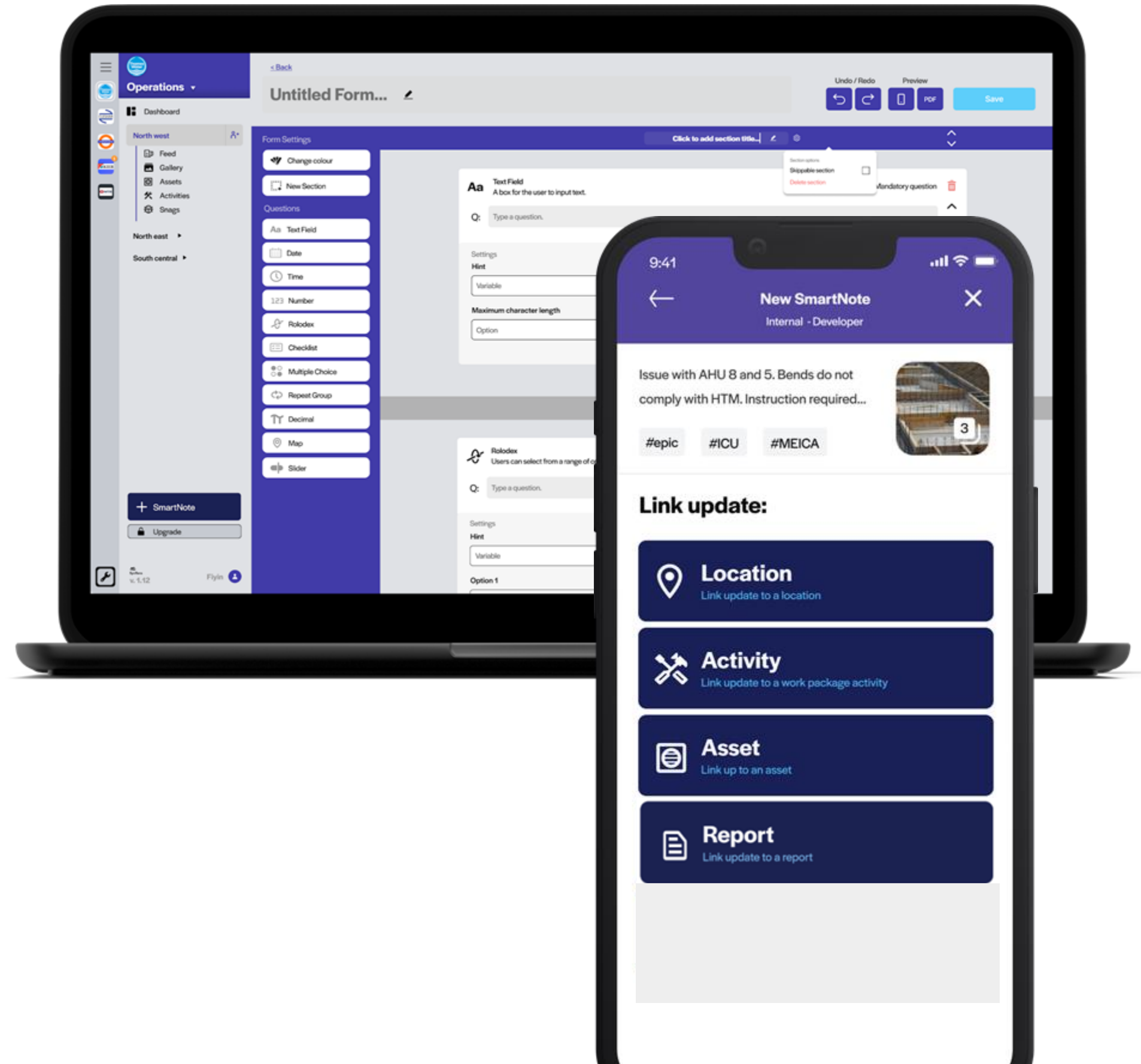
We make it easy for teams to communicate

- Built for simplicity
- Built for sharing
- Built for multiple stakeholders
- Built for data interoperability



Build your forms & workflows. Eliminate paperwork

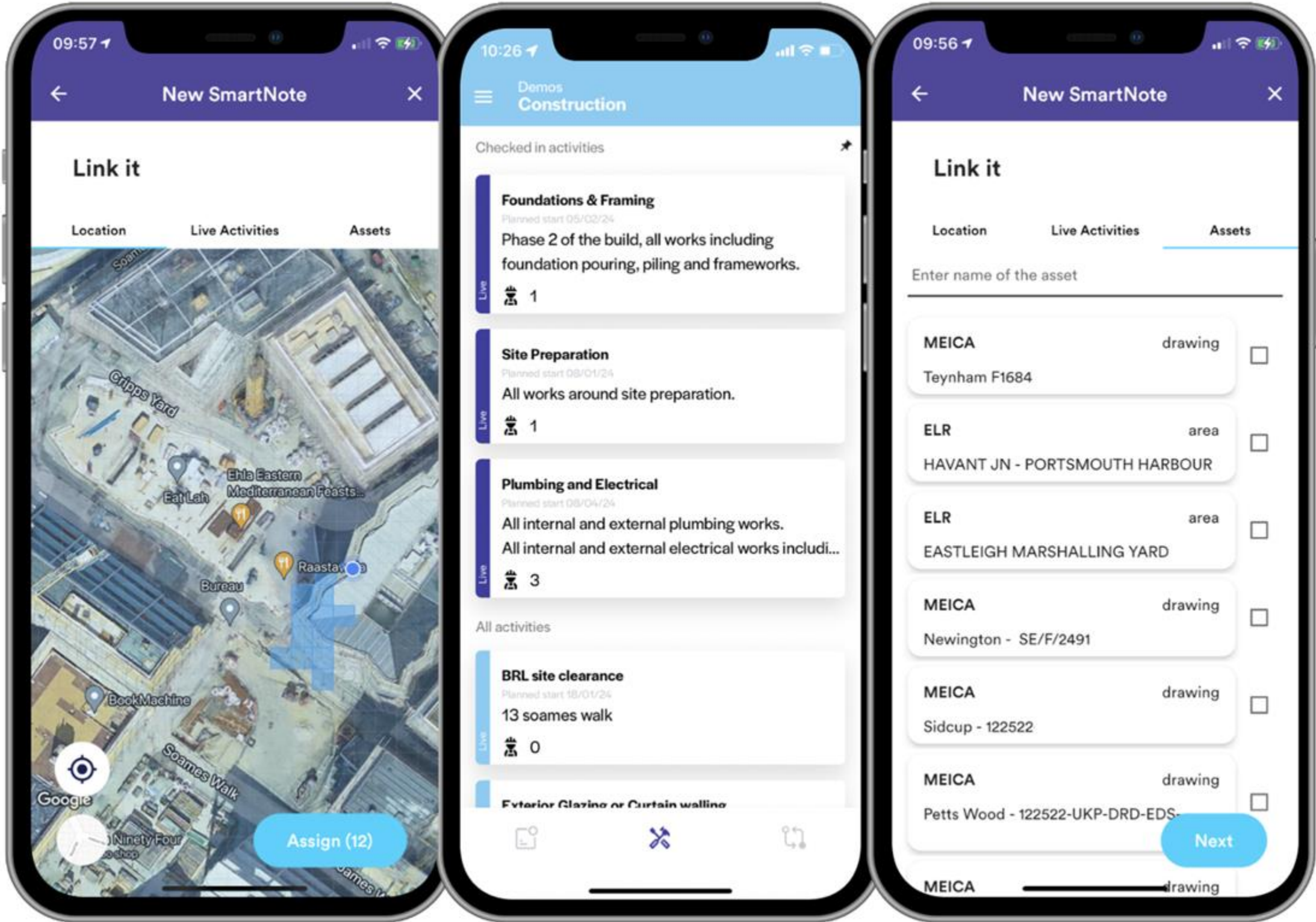
- Create forms and workflows that are easily accessible on both mobile and web.



Top Feature

Everything is easily cross referenced

→ Understand the interdependence of assets, activities and people across all projects.

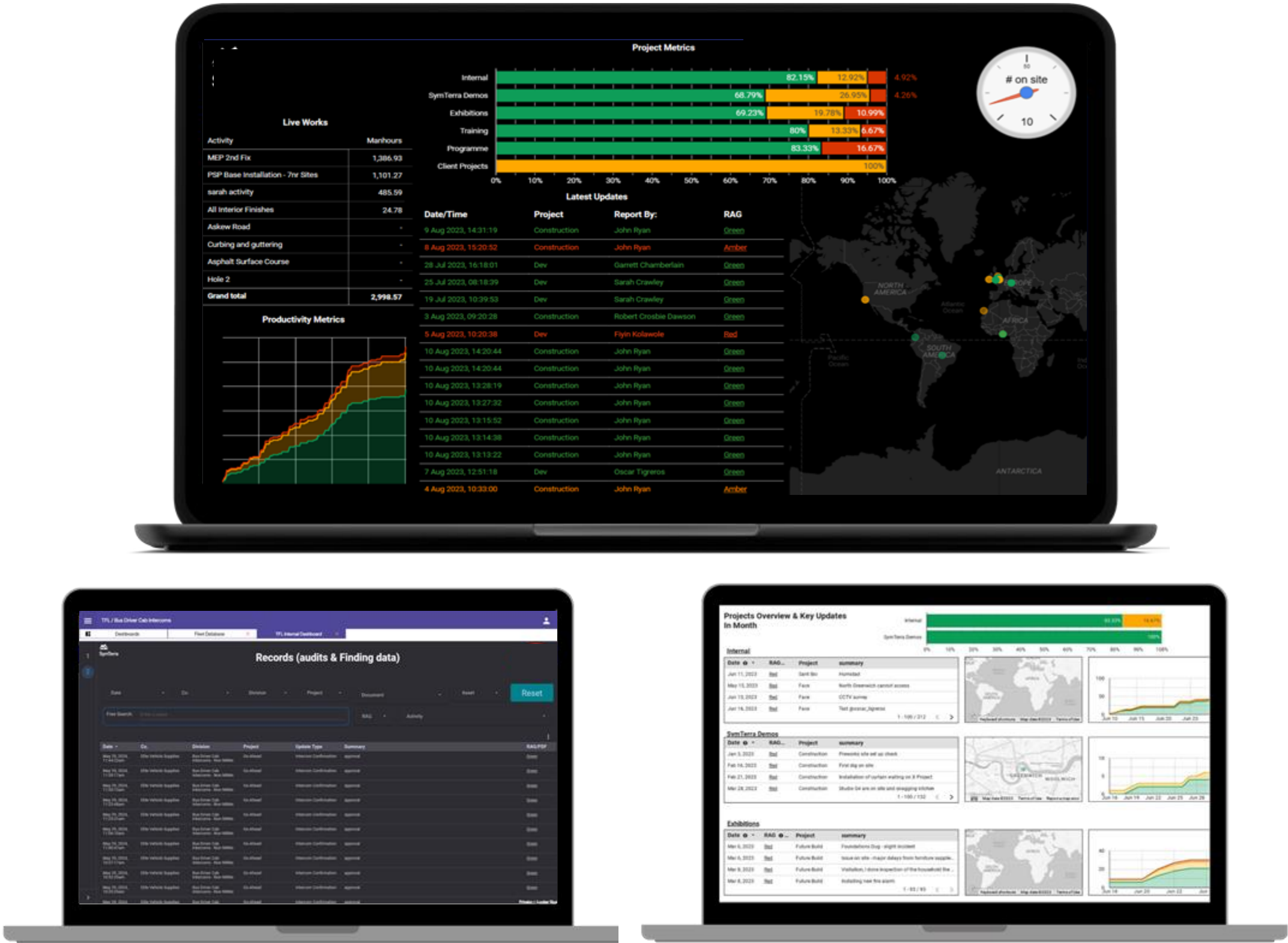


Top Feature

Efficient real-time reporting



- **Aware**
Be aware of what’s happening in real time.
- **Prepare**
Be ready for any potential challenges or changes.
- **Prioritise**
Clearly and simply see where to place attention.
- **Report**
Find vital information quickly. Auto generated and easily exportable reports.



Integrations: We play well with others



GCP is the cloud platform provider.

SymTerra is compliant with:

- ISO/IEC 27001/27017/27018/27701
- SOC 1/2/3
- PCI DSS
- VPAT
- FedRAMP
- ISO 50001:2018 for energy management.

- SymTerra is registered with the ICO.
- We do not track users or hold data not required to provide the service.
- The only personal data stored is the name and email address.
- All data belongs to the client.



All data is stored and processed in the UK.

Your six – step implementation plan

WITHIN WEEK 1



Set-up

Your programmes and projects set up.

User onboarding starts.



Forms & Workflows

Build your key forms and workflows with or without our support.



Training and check in

Training materials shared.

Review initial team usage.

WITHIN MONTH 1



Dashboards & Reports

Your custom reporting and KPI dashboards are built.



Integrations set-up

Link to your existing systems as required.

BY MONTH 2



BAU

Dashboards refined and finalised.

Key advantages of our solution over others

	Our Solution	Traditional Digital Competitors
User Experience	Modern, intuitive, and user-friendly interface designed for seamless adoption by all user levels. Also works on mobile devices!	Complex and outdated interfaces that require extensive training and customisation. Seldom work on mobile devices.
Flexibility for now and the future	Scalable and sustainable for your needs. Information focused.	Expensive and time-consuming to tailor; often rigid with limited flexibility.
Integration Capabilities	Seamless integration with a wide range of systems, ensuring data interoperability and open data standards.	Limited integration options, often requiring costly add-ons or workarounds. Don't support open data standards!
Agility & Innovation	Leveraging cutting-edge cloud technologies to deliver continuous updates and innovative features.	Slow to adopt new technologies, resulting in outdated systems that can't keep up with modern demands.
Support & Training	Upskilling the workforce in digital applications and data maturity.	Limited or generalised support; users often struggle with steep learning curves. Consultant always required.

**It's like paperwork.
Except without the paper.
Or the work.**

www.symterra.com