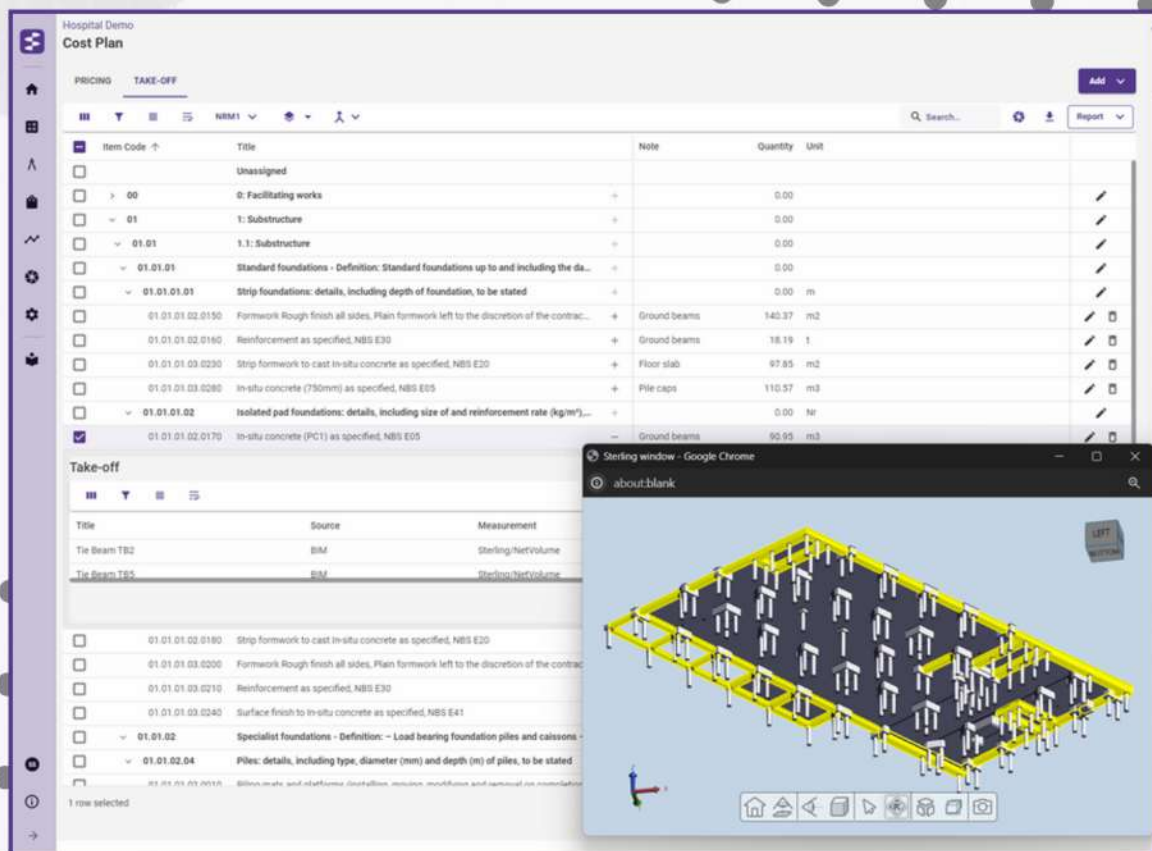


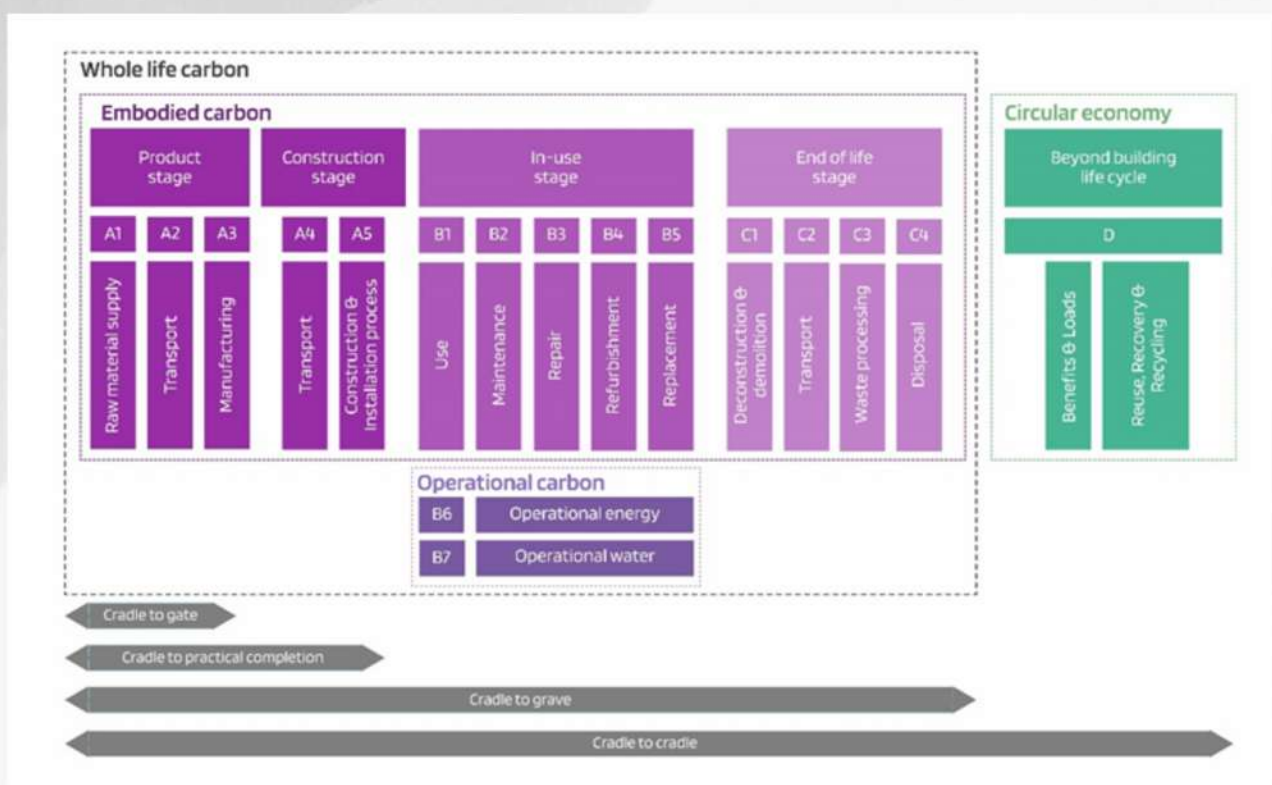


10 Reasons to Choose Sterling Cost and Carbon Estimating



1 - Full life cost and carbon estimating

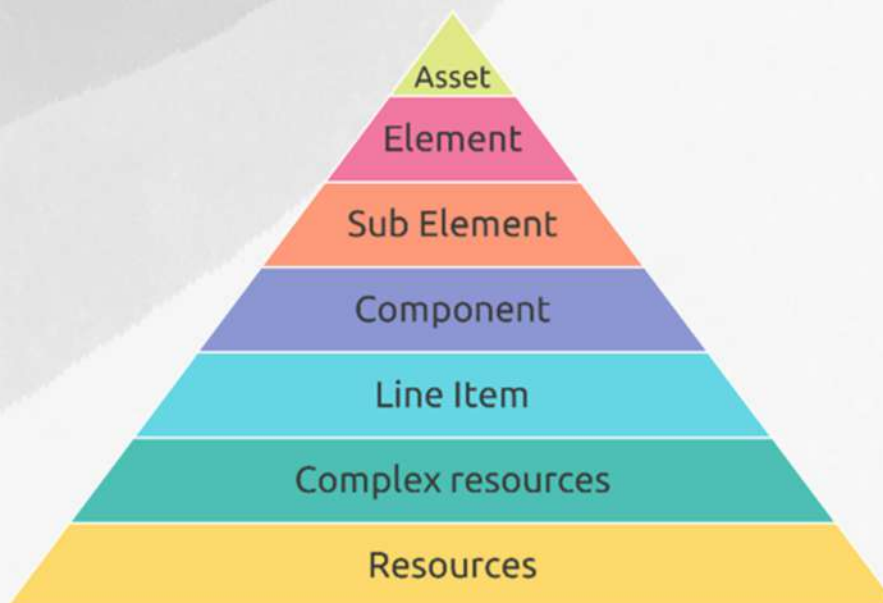
Sterling's integrated cost and carbon estimation offers a transformative approach that aligns economic efficiency with environmental stewardship. By seamlessly combining these crucial factors, stakeholders—including clients, architects, sustainability teams, and cost experts—can achieve an optimal balance between financial and environmental value. This integration promotes a unified understanding and transparency, ensuring that all parties are aligned in their commitment to sustainable development.



The synergy between cost and carbon data provides a comprehensive view of a project's financial and ecological impact. It empowers stakeholders to make informed decisions, where cost-saving strategies are evaluated in conjunction with their carbon footprints, enabling more sustainable choices without compromising on quality or budget. This holistic approach allows for project optimisation, enhancing environmental performance while meeting economic expectations. Ultimately, integrated cost and carbon estimation transcends the goal of merely building better—it embodies the principle of building responsibly for a sustainable future.

2 - Common resource library

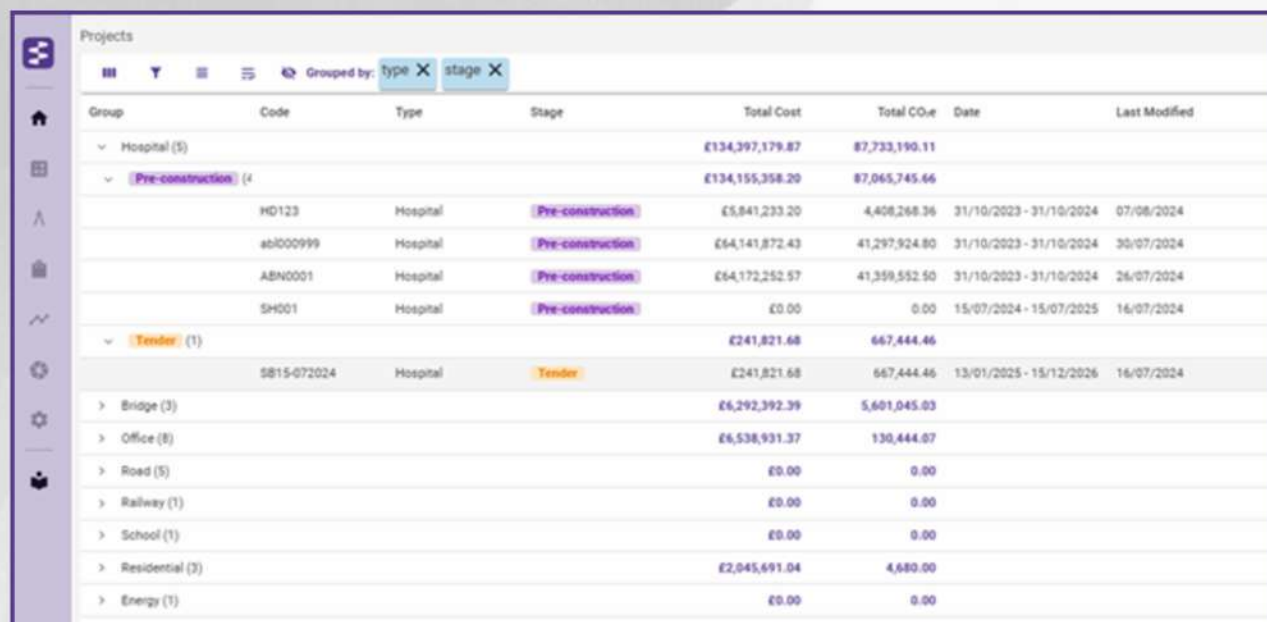
A common resource library, detailed across various levels of granularity, is essential for enhancing the transparency and accuracy of cost and carbon estimates. This centralised repository ensures that all stakeholders have access to consistent and reliable data, which is crucial for precise forecasting and assessment. By accurately cataloguing resources, it enables a more nuanced analysis of both direct and indirect values associated with carbon output



The inclusion of valid Environmental Product Declarations (EPDs) within this library is particularly critical. EPDs offer verified information about the environmental impact of products, forming the basis for robust sustainability assessments. They act as benchmarks for the environmental performance of materials, allowing stakeholders to make informed choices that align with sustainability objectives. This level of detail and verification propagates a culture of accountability and promotes best practices in environmental stewardship across the industry. Ultimately, a well-maintained common resource library, enriched with valid EPDs, is the cornerstone of producing high-quality, transparent, and sustainable cost and carbon estimates.

3 - Project Library

The Sterling Project Library provides a comprehensive solution for managing multiple projects by consolidating all project information into a single, accessible platform.



The screenshot displays the Sterling Project Library interface. On the left is a sidebar with navigation icons. The main area shows a table of projects, filtered and grouped by 'type' and 'stage'. The table has columns for Group, Code, Type, Stage, Total Cost, Total COe, Date, and Last Modified. Projects are grouped by Type (Hospital, Bridge, Office, Road, Railway, School, Residential, Energy) and then by Stage (Pre-construction, Tender). The 'Pre-construction' stage is highlighted in purple, and the 'Tender' stage is highlighted in orange.

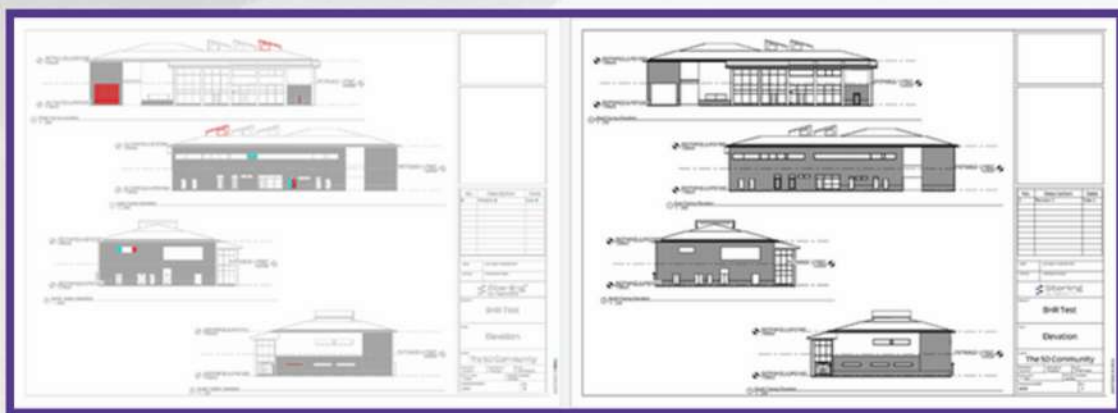
Group	Code	Type	Stage	Total Cost	Total COe	Date	Last Modified
▼ Hospital (5)				£134,397,179.87	87,733,190.11		
▼ Pre-construction (4)				£134,155,358.20	87,065,745.66		
	HD123	Hospital	Pre-construction	£5,841,233.20	4,408,268.36	31/10/2023 - 31/10/2024	07/08/2024
	4b1000999	Hospital	Pre-construction	£64,141,872.43	41,297,924.80	31/10/2023 - 31/10/2024	30/07/2024
	ABN0001	Hospital	Pre-construction	£64,172,252.57	41,359,552.50	31/10/2023 - 31/10/2024	26/07/2024
	SH001	Hospital	Pre-construction	£0.00	0.00	15/07/2024 - 15/07/2025	16/07/2024
▼ Tender (1)				£241,821.68	667,444.46		
	SB15-072024	Hospital	Tender	£241,821.68	667,444.46	13/01/2025 - 15/12/2026	16/07/2024
> Bridge (3)				£6,292,392.39	5,601,045.03		
> Office (8)				£6,538,931.37	130,444.87		
> Road (5)				£0.00	0.00		
> Railway (1)				£0.00	0.00		
> School (1)				£0.00	0.00		
> Residential (3)				£2,045,691.04	4,680.00		
> Energy (1)				£0.00	0.00		

This centralised collection enables users to easily view, organise, and track the progress of each project, ensuring that no details are overlooked.

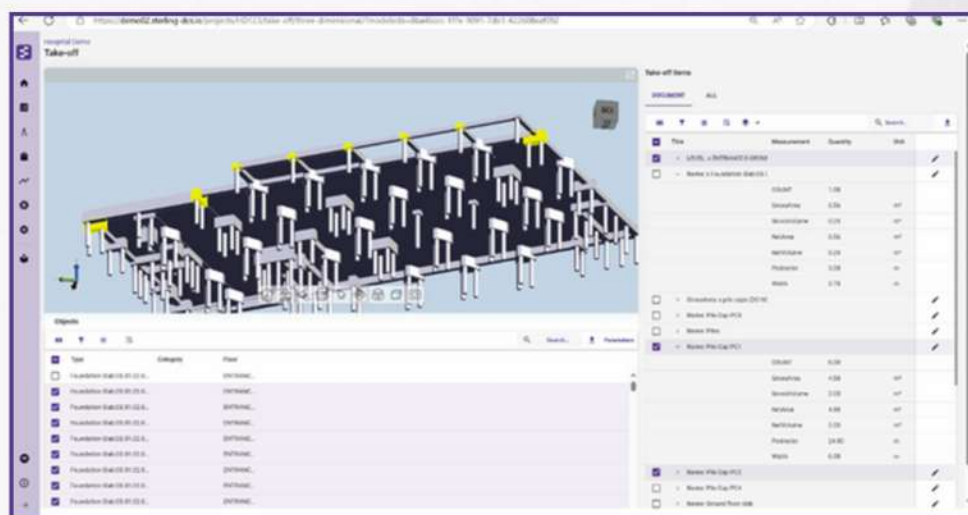
With the Sterling Project Library, managing all of your estimates across various clients becomes seamless and user-friendly, enhancing collaboration among team members. Sterling's robust filtering capabilities, akin to those found in Excel, allow you to quickly and easily locate specific projects. Additionally, projects can be grouped by metadata, such as client or project type, offering a customised and organised view that supports more effective decision-making and strategic planning. This unified approach not only saves time but also provides a clearer overview of project statuses, enabling more efficient management and execution.

4 - Simple model version comparison

Sterling offers comprehensive 2D and 3D take-off capabilities for all major CAD formats, including ifc, nwd, rvt, dwg, dxf, dng and pdf. Other file types such as Solidworks and Bentley are in our development roadmap. This robust functionality allows users to efficiently extract precise measurements and quantities directly from digital drawings. Sterling's advanced comparison tools further enhance this process by automatically detecting changes between different drawing versions, whether in 3D models or 2D images.



This feature significantly reduces the time and effort required to identify modifications, ensuring updates are seamlessly integrated into the project workflow. Additionally, Sterling provides immediate insights into the potential impacts on cost and carbon footprint that may result from adopting new drawings, facilitating informed decision-making and promoting sustainable project management practices.



5 - Standard coding practices and WBS

Sterling offers extensive capabilities for pivoting data across an unlimited number of standard breakdown structures, including NRM1, CESMM4, ICMS3, HMM, and RMM. This flexibility is further enhanced by allowing users to create a project-specific Work Breakdown Structure (WBS) tailored to the client's requirements. Estimates can be reported using various standards and structures, ensuring alignment with client needs and adherence to internal validation and sign-off processes.

The use of industry-recognised breakdown codes is crucial for transparency and benchmarking as the project database grows. These standardised codes provide a common language for all stakeholders, ensuring a shared understanding of project details and expectations. This commonality is essential for comparing projects, as it enables consistent tracking and analysis of data over time. As the database expands, these codes form the foundation for building a robust historical record, which is invaluable for benchmarking future projects. This level of transparency and standardisation is key to maintaining quality, efficiency, and accountability in project estimation and management.

Item Code	Title	Note	Quantity	Unit	Net Rate	Net Total	Gross Rate	Gross Total	Cx
01.01	1.1: Substructure		1,000.00	m2	£1,238.39	£1,238,392.04			
01.01.01	Standard foundations - Definition: Standard foundations up to and including the da...		75.00	m	£1,659.77	£124,482.49			
01.01.01.01	Strip foundations: details, including depth of foundation, to be stated		75.00	m	£104.63	£7,847.54			
01.01.01.03.0260	Formwork Rough finish all sides, Plain formwork left to the discretion of the contrac...		12.94	m2	£106.68	£1,380.17	£123.22	£1,594.10	GI
01.01.01.03.0270	Reinforcement as specified, NBS E30		0.98	t	£4,311.27	£4,226.95	£4,976.52	£4,882.11	GI

Code	Title	EPD Link	Type	Resource Rate	BoQ Quantity
10.06.005	Steelfixer		Labour	£14.80	0.98
20.03.010	25 tonne Truck Kato crane		Plant	£445.00	0.98
30.02.08.0...	High yield steel bars B5 4440, 4...		Material	£625.14	0.98
30.02.11.5...	Reinforcement spacer blocks, c...		Material	£7.73	0.98

Code	Title	Resource Rate	Unit
10.01.000	Labour operative	£14.00	hr
10.01.005	General labourer	£12.70	hr
10.01.010	Plant operator	£14.00	hr
10.01.015	Tunnelling equipment oper...	£14.00	hr

6 - Resource view for Cost and Carbon reduction

Sterling not only facilitates the creation of a detailed cost plan and Bill of Quantities (BoQ) but also empowers users to analyse projects from a resource-centric perspective. This dual capability allows for the assessment of both the cost and carbon footprint associated with resource consumption. By consolidating resource usage data, Sterling enables users to identify the major contributors to a project's carbon output and provides precise insights into where these resources are utilised. This clarity supports effective discussions with technical authorities and is instrumental in developing targeted strategies to reduce both cost and carbon footprint, thereby enhancing the project's overall sustainability and efficiency.

Resource Manager																
<input type="checkbox"/>	Code	Title	Type	Note	Quantity	Unit	Resource Rate	Total Cost	Resource Type	Hourly Rate	End-use to Site %	Total CO2e A	Total CO2e B	Total CO2e C	CO2e Code	CO2e Link
<input type="checkbox"/>	01.02.01.001	1000 steel bars 12 mm dia, 12mm x 12mm/m	Material		1000	m	\$21.00	\$21,000.00	Steel	1.00	100%	1000.00	1000.00	1000.00	01.02.01.001-001-001	https://api.vic.gov.au/energy/01.02.01.001-001-001
<input type="checkbox"/>	01.02.01.002	1000 steel reinforcement bars 12mm dia, 12mm x 12mm/m	Material		1000	m	\$21.00	\$21,000.00	Steel	1.00	100%	1000.00	1000.00	1000.00	01.02.01.001-001-002	https://api.vic.gov.au/energy/01.02.01.001-001-002
<input type="checkbox"/>	01.02.01.003	1000 steel reinforcement bars 12mm dia, 12mm x 12mm/m	Material		1000	m	\$21.00	\$21,000.00	Concrete	1.00	100%	1000.00	1000.00	1000.00	01.02.01.001-001-003	https://api.vic.gov.au/energy/01.02.01.001-001-003
Cost Items - Concrete (25mm aggregate)																
<input type="checkbox"/>	Item Code	Title	Note	Quantity	Unit	Resource Rate	Total Cost	CO2e Rate	Total CO2e							
<input type="checkbox"/>	01.02.01.001	1000 concrete (25mm aggregate) as specified, 1000 m³	Concrete	1000	m³	\$21.00	\$21,000.00	1000.00	1000.00							
<input type="checkbox"/>	01.02.01.002	1000 concrete (25mm aggregate) as specified, 1000 m³	Concrete	1000	m³	\$21.00	\$21,000.00	1000.00	1000.00							
<input type="checkbox"/>	01.02.01.003	1000 concrete (25mm aggregate) as specified, 1000 m³	Concrete	1000	m³	\$21.00	\$21,000.00	1000.00	1000.00							
<input type="checkbox"/>	01.02.01.004	1000 concrete (25mm aggregate) as specified, 1000 m³	Concrete	1000	m³	\$21.00	\$21,000.00	1000.00	1000.00							
<input type="checkbox"/>	01.02.01.005	1000 concrete (25mm aggregate) as specified, 1000 m³	Concrete	1000	m³	\$21.00	\$21,000.00	1000.00	1000.00							

7 - Collaboration with the supply chain and delivery partners

Sterling sets the standard for working with the supply chain to ensure estimates are both robust and reliable. Our innovative platform revolutionises the creation and distribution of work packages within estimates, streamlining the process of inviting suppliers and specialist contractors to provide essential cost and carbon data. This ensures that the generation of estimates is not delayed while waiting for information from the supply chain.

Sterling allows users to create work packages effortlessly with a simple drag-and-drop feature from the cost plan to the work package. These work packages can then be assigned to multiple partners, fostering a competitive yet collaborative environment. Additionally, users can allocate multiple work packages to a single partner, optimising resource management and task distribution.

Project Details

Work Packages (Estimate - Package)

Cost Plan

Advanced

File	Quantity	Unit	Rate	Item Total	Total Cost
Disposal of excavated material arising from piling	1,228.6	m3	£37.57	£46,147.76	0.00
Excavation, commencing level stated on the drawings	164,257	m3	£6,822.94	£1,120,995.78	388,107.94
Support to floors of excavation is at the discretion of	£173.93	m2	£752.69	£361,745.84	899,917.91
Excavation, commencing level stated on the drawings	164,854	m3	£389.92	£23,476.92	0.00
Support to floors of excavation is at the discretion of	£175.23	m2	£124.78	£4,805.70	£3,047.88
Excavation, commencing level stated on the drawings	79,242	m3	£338.92	£2,735.77	0.00
Support to floors of excavation is at the discretion of	292,226	m2	£124.78	£7,124.40	£3,645.36
Package Total	£: £1,614,134.82 c/c/a £: 1,191,437.81				£: £620,886.77 - /c/a/b/c £: 7,086.33
Below the Line Items / Adjustments					
contract sum					
initial price item					
Adjustments Subtotal					
Revised Package Total					

Artificial Bidder (average)

Remis

File	Quantity	Unit	Rate	Item Total	Total Cost
Disposal of excavated material arising from piling	60.00	m3	£50.00	£3,000.00	0.00
Excavation, commencing level stated on the drawings	£1,000.00	m3	£1,000.00	£1,000.00	0.00
Support to floors of excavation is at the discretion of	£1,000.00	m2	£1,000.00	£1,000.00	0.00
Excavation, commencing level stated on the drawings	£1,000.00	m3	£1,000.00	£1,000.00	0.00
Support to floors of excavation is at the discretion of	£1,000.00	m2	£1,000.00	£1,000.00	0.00
Excavation, commencing level stated on the drawings	£1,000.00	m3	£1,000.00	£1,000.00	0.00
Support to floors of excavation is at the discretion of	£1,000.00	m2	£1,000.00	£1,000.00	0.00
Package Total	£: £1,000.00 c/c/a £: 1,000.00				£: £1,000.00 - /c/a/b/c £: 1,000.00
Below the Line Items / Adjustments					
contract sum					
initial price item					
Adjustments Subtotal					
Revised Package Total					

Paddock construction

Advanced

File	Quantity	Unit	Rate	Item Total	Total Cost
Disposal of excavated material arising from piling	60.00	m3	£50.00	£3,000.00	0.00
Excavation, commencing level stated on the drawings	£1,000.00	m3	£1,000.00	£1,000.00	0.00
Support to floors of excavation is at the discretion of	£1,000.00	m2	£1,000.00	£1,000.00	0.00
Excavation, commencing level stated on the drawings	£1,000.00	m3	£1,000.00	£1,000.00	0.00
Support to floors of excavation is at the discretion of	£1,000.00	m2	£1,000.00	£1,000.00	0.00
Excavation, commencing level stated on the drawings	£1,000.00	m3	£1,000.00	£1,000.00	0.00
Support to floors of excavation is at the discretion of	£1,000.00	m2	£1,000.00	£1,000.00	0.00
Package Total	£: £1,000.00 c/c/a £: 1,000.00				£: £1,000.00 - /c/a/b/c £: 1,000.00
Below the Line Items / Adjustments					
contract sum					
initial price item					
Adjustments Subtotal					
Revised Package Total					

gworks

Advanced

File	Quantity	Unit	Rate	Item Total	Total Cost
Disposal of excavated material arising from piling	60.00	m3	£50.00	£3,000.00	0.00
Excavation, commencing level stated on the drawings	£1,000.00	m3	£1,000.00	£1,000.00	0.00
Support to floors of excavation is at the discretion of	£1,000.00	m2	£1,000.00	£1,000.00	0.00
Excavation, commencing level stated on the drawings	£1,000.00	m3	£1,000.00	£1,000.00	0.00
Support to floors of excavation is at the discretion of	£1,000.00	m2	£1,000.00	£1,000.00	0.00
Excavation, commencing level stated on the drawings	£1,000.00	m3	£1,000.00	£1,000.00	0.00
Support to floors of excavation is at the discretion of	£1,000.00	m2	£1,000.00	£1,000.00	0.00
Package Total	£: £1,000.00 c/c/a £: 1,000.00				£: £1,000.00 - /c/a/b/c £: 1,000.00
Below the Line Items / Adjustments					
contract sum					
initial price item					
Adjustments Subtotal					
Revised Package Total					

8 Lowest

Advanced

File	Quantity	Unit	Rate	Item Total	Total Cost
Disposal of excavated material arising from piling	60.00	m3	£50.00	£3,000.00	0.00
Excavation, commencing level stated on the drawings	£1,000.00	m3	£1,000.00	£1,000.00	0.00
Support to floors of excavation is at the discretion of	£1,000.00	m2	£1,000.00	£1,000.00	0.00
Excavation, commencing level stated on the drawings	£1,000.00	m3	£1,000.00	£1,000.00	0.00
Support to floors of excavation is at the discretion of	£1,000.00	m2	£1,000.00	£1,000.00	0.00
Excavation, commencing level stated on the drawings	£1,000.00	m3	£1,000.00	£1,000.00	0.00
Support to floors of excavation is at the discretion of	£1,000.00	m2	£1,000.00	£1,000.00	0.00
Package Total	£: £1,000.00 c/c/a £: 1,000.00				£: £1,000.00 - /c/a/b/c £: 1,000.00
Below the Line Items / Adjustments					
contract sum					
initial price item					
Adjustments Subtotal					
Revised Package Total					

9 Plug Rates

Advanced

File	Quantity	Unit	Rate	Item Total	Total Cost
Disposal of excavated material arising from piling	60.00	m3	£50.00	£3,000.00	0.00
Excavation, commencing level stated on the drawings	£1,000.00	m3	£1,000.00	£1,000.00	0.00
Support to floors of excavation is at the discretion of	£1,000.00	m2	£1,000.00	£1,000.00	0.00
Excavation, commencing level stated on the drawings	£1,000.00	m3	£1,000.00	£1,000.00	0.00
Support to floors of excavation is at the discretion of	£1,000.00	m2	£1,000.00	£1,000.00	0.00
Excavation, commencing level stated on the drawings	£1,000.00	m3	£1,000.00	£1,000.00	0.00
Support to floors of excavation is at the discretion of	£1,000.00	m2	£1,000.00	£1,000.00	0.00
Package Total	£: £1,000.00 c/c/a £: 1,000.00				£: £1,000.00 - /c/a/b/c £: 1,000.00
Below the Line Items / Adjustments					
contract sum					
initial price item					
Adjustments Subtotal					
Revised Package Total					

Remove Plug Rates

Advanced

File	Quantity	Unit	Rate	Item Total	Total Cost
Disposal of excavated material arising from piling	60.00	m3	£50.00	£3,000.00	0.00
Excavation, commencing level stated on the drawings	£1,000.00	m3	£1,000.00	£1,000.00	0.00
Support to floors of excavation is at the discretion of	£1,000.00	m2	£1,000.00	£1,000.00	0.00
Excavation, commencing level stated on the drawings	£1,000.00	m3	£1,000.00	£1,000.00	0.00
Support to floors of excavation is at the discretion of	£1,000.00	m2	£1,000.00	£1,000.00	0.00
Excavation, commencing level stated on the drawings	£1,000.00	m3	£1,000.00	£1,000.00	0.00
Support to floors of excavation is at the discretion of	£1,000.00	m2	£1,000.00	£1,000.00	0.00
Package Total	£: £1,000.00 c/c/a £: 1,000.00				£: £1,000.00 - /c/a/b/c £: 1,000.00
Below the Line Items / Adjustments					
contract sum					
initial price item					
Adjustments Subtotal					
Revised Package Total					

Remove Plug Rates

Advanced

File	Quantity	Unit	Rate	Item Total	Total Cost
Disposal of excavated material arising from piling	60.00	m3	£50.00	£3,000.00	0.00
Excavation, commencing level stated on the drawings	£1,000.00	m3	£1,000.00	£1,000.00	0.00
Support to floors of excavation is at the discretion of	£1,000.00	m2	£1,000.00	£1,000.00	0.00
Excavation, commencing level stated on the drawings	£1,000.00	m3	£1,000.00	£1,000.00	0.00
Support to floors of excavation is at the discretion of	£1,000.00	m2	£1,000.00	£1,000.00	0.00
Excavation, commencing level stated on the drawings	£1,000.00	m3	£1,000.00	£1,000.00	0.00
Support to floors of excavation is at the discretion of	£1,000.00	m2	£1,000.00	£1,000.00	0.00
Package Total	£: £1,000.00 c/c/a £: 1,000.00				£: £1,000.00 - /c/a/b/c £: 1,000.00
Below the Line Items / Adjustments					
contract sum					
initial price item					
Adjustments Subtotal					
Revised Package Total					

Remove Plug Rates

Advanced

File	Quantity	Unit	Rate	Item Total	Total Cost
Disposal of excavated material arising from piling	60.00	m3	£50.00	£3,000.00	0.00
Excavation, commencing level stated on the drawings	£1,000.00	m3	£1,000.00	£1,000.00	0.00
Support to floors of excavation is at the discretion of	£1,000.00	m2	£1,000.00	£1,000.00	0.00
Excavation, commencing level stated on the drawings	£1,000.00	m3	£1,000.00	£1,000.00	0.00
Support to floors of excavation is at the discretion of	£1,000.00	m2	£1,000.00	£1,000.00	0.00
Excavation, commencing level stated on the drawings	£1,000.00	m3	£1,000.00	£1,000.00	0.00
Support to floors of excavation is at the discretion of	£1,000.00	m2	£1,000.00	£1,000.00	0.00
Package Total	£: £1,000.00 c/c/a £: 1,000.00				£: £1,000.00 - /c/a/b/c £: 1,000.00
Below the Line Items / Adjustments					
contract sum					
initial price item					
Adjustments Subtotal					
Revised Package Total					

Remove Plug Rates

Advanced

File	Quantity	Unit	Rate	Item Total	Total Cost
Disposal of excavated material arising from piling	60.00	m3	£50.00	£3,000.00	0.00
Excavation, commencing level stated on the drawings	£1,000.00	m3	£1,000.00	£1,000.00	0.00
Support to floors of excavation is at the discretion of	£1,000.00	m2	£1,000.00	£1,000.00	0.00
Excavation, commencing level stated on the drawings	£1,000.00	m3	£1,000.00	£1,000.00	0.00
Support to floors of excavation is at the discretion of	£1,000.00	m2	£1,000.00	£1,000.00	0.00
Excavation, commencing level stated on the drawings	£1,000.00	m3	£1,000.00	£1,000.00	0.00
Support to floors of excavation is at the discretion of	£1,000.00	m2	£1,000.00	£1,000.00	0.00
Package Total	£: £1,000.00 c/c/a £: 1,000.00				£: £1,000.00 - /c/a/b/c £: 1,000.00
Below the Line Items / Adjustments					
contract sum					
initial price item					
Adjustments Subtotal					
Revised Package Total					

Remove Plug Rates

Advanced

File	Quantity	Unit	Rate	Item Total	Total Cost
Disposal of excavated material arising from piling	60.00	m3	£50.00	£3,000.00	0.00
Excavation, commencing level stated on the drawings	£1,000.00	m3	£1,000.00	£1,000.00	0.00
Support to floors of excavation is at the discretion of	£1,000.00	m2	£1,000.00	£1,000.00	0.00
Excavation, commencing level stated on the drawings	£1,000.00	m3	£1,000.00	£1,000.00	0.00
Support to floors of excavation is at the discretion of	£1,000.00	m2	£1,000.00	£1,000.00	0.00
Excavation, commencing level stated on the drawings	£1,000.00	m3	£1,000.00	£1,000.00	0.00
Support to floors of excavation is at the discretion of	£1,000.00	m2	£1,000.00	£1,000.00	0.00
Package Total	£: £1,000.00 c/c/a £: 1,000.00				£: £1,000.00 - /c/a/b/c £: 1,000.00
Below the Line Items / Adjustments					
contract sum					
initial price item					
Adjustments Subtotal					
Revised Package Total					

Remove Plug Rates

Advanced

File	Quantity	Unit	Rate	Item Total	Total Cost
Disposal of excavated material arising from piling	60.00	m3	£50.00	£3,000.00	0.00
Excavation, commencing level stated on the drawings	£1,000.00	m3	£1,000.00	£1,000.00	0.00
Support to floors of excavation is at the discretion of	£1,000.00	m2	£1,000.00	£1,000.00	0.00
Excavation, commencing level stated on the drawings	£1,000.00	m3	£1,000.00	£1,000.00	0.00
Support to floors of excavation is at the discretion of	£1,000.00	m2	£1,000.00	£1,000.00	0.00
Excavation, commencing level stated on the drawings	£1,000.00	m3	£1,000.00	£1,000.00	0.00
Support to floors of excavation is at the discretion of	£1,000.00	m2	£1,000.00	£1,000.00	0.00
Package Total	£: £1,000.00 c/c/a £: 1,000.00				£: £1,000.00 - /c/a/b/c £: 1,000.00
Below the Line Items / Adjustments					
contract sum					
initial price item					
Adjustments Subtotal					
Revised Package Total					

Remove Plug Rates

Advanced

File	Quantity	Unit	Rate	Item Total	Total Cost
Disposal of excavated material arising from piling	60.00	m3	£50.00	£3,000.00	0.00
Excavation, commencing level stated on the drawings	£1,000.00	m3	£1,000.00	£1,000.00	0.00
Support to floors of excavation is at the discretion of	£1,000.00	m2	£1,000.00	£1,000.00	0.00
Excavation, commencing level stated on the drawings	£1,000.00	m3	£1,000.00	£1,000.00	0.00
Support to floors of excavation is at the discretion of	£1,000.00	m2	£1,000.00	£1,000.00	0.00
Excavation, commencing level stated on the drawings	£1,000.00	m3	£1,000.00	£1,000.00	0.00
Support to floors of excavation is at the discretion of	£1,000.00	m2	£1,000.00	£1,000.00	0.00
Package Total	£: £1,000.00 c/c/a £: 1,000.00				£: £1,000.00 - /c/a/b/c £: 1,000.00
Below the Line Items / Adjustments					
contract sum					
initial price item					
Adjustments Subtotal					
Revised Package Total					

Remove Plug Rates

Advanced

File	Quantity	Unit	Rate	Item Total	Total Cost
Disposal of excavated material arising from piling	60.00	m3	£50.00	£3,000.00	0.00
Excavation, commencing level stated on the drawings	£1,000.00	m3	£1,000.00	£1,000.00	0.00
Support to floors of excavation is at the discretion of	£1,000.00	m2	£1,000.00	£1,000.00	0.00
Excavation, commencing level stated on the drawings	£1,000.00	m3	£1,000.00	£1,000.00	0.00
Support to floors of excavation is at the discretion of	£1,000.00	m2	£1,000.00	£1,000.00	0.00
Excavation, commencing level stated on the drawings	£1,000.00	m3	£1,000.00	£1,000.00	0.00
Support to floors of excavation is at the discretion of	£1,000.00	m2	£1,000.00	£1,000.00	0.00
Package Total	£: £1,000.00 c/c/a £: 1,000.00				£: £1,000.00 - /c/a/b/c £: 1,000.00
Below the Line Items / Adjustments					
contract sum					
initial price item					
Adjustments Subtotal					
Revised Package Total					

Remove Plug Rates

Advanced

File	Quantity	Unit	Rate	Item Total	Total Cost
Disposal of excavated material arising from piling	60.00	m3	£50.00	£3,000.00	0.00
Excavation, commencing level stated on the drawings	£1,000.00	m3	£1,000.00	£1,000.00	0.00
Support to floors of excavation is at the discretion of	£1,000.00	m2	£1,000.00	£1,000.00	0.00
Excavation, commencing level stated on the drawings	£1,000.00	m3	£1,000.00	£1,000.00	0.00
Support to floors of excavation is at the discretion of	£1,000.00	m2	£1,000.00	£1,000.00	0.00
Excavation, commencing level stated on the drawings	£1,000.00	m3	£1,000.00	£1,000.00	0.00
Support to floors of excavation is at the discretion of	£1,000.00	m2	£1,000.00	£1,000.00	0.00
Package Total	£: £1,000.00 c/c/a £: 1,000.00				£: £1,000.00 - /c/a/b/c £: 1,000.00
Below the Line Items / Adjustments					
contract sum					
initial price item					
Adjustments Subtotal					
Revised Package Total					

Remove Plug Rates

Advanced

File	Quantity	Unit	Rate	Item Total	Total Cost
Disposal of excavated material arising from piling	60.00	m3	£50.00	£3,000.00	0.00
Excavation, commencing level stated on the drawings	£1,000.00	m3	£1,000.00	£1,000.00	0.00
Support to floors of excavation is at the discretion of	£1,000.00	m2	£1,000.00	£1,000.00	0.00
Excavation, commencing level stated on the drawings	£1,000.00	m3	£1,000.00	£1,000.00	0.00
Support to floors of excavation is at the discretion of	£1,000.00	m2	£1,000.00	£1,000.00	0.00
Excavation, commencing level stated on the drawings	£1,000.00	m3	£1,000.00	£1,000.00	0.00
Support to floors of excavation is at the discretion of	£1,000.00	m2	£1,000.00	£1,000.00	0.00
Package Total	£: £1,000.00 c/c/a £: 1,000.00				£: £1,000.00 - /c/a/b/c £: 1,000.00
Below the Line Items / Adjustments					
contract sum					
initial price item					
Adjustments Subtotal					
Revised Package Total					

Remove Plug Rates

Advanced

File	Quantity	Unit	Rate	Item Total	Total Cost
Disposal of excavated material arising from piling	60.00	m3	£50.00	£3,000.00	0.00

Partners access Sterling through a secure, simplified version of the platform, eliminating the need for exports, emails, and imports. This specialised interface streamlines workflows, saves time, and reduces the potential for errors.

A standout feature of Sterling is the removal of licensing requirements for partner companies, which eliminates a common barrier and broadens supply chain engagement. This inclusion extends to a diverse range of suppliers, both large and small.

8 - Exports, Reporting and Dashboards

Sterling empowers users to generate outputs from the system in three distinct ways:

- **Data Export:** Users can export data from any window to .CSV, enabling smooth integration with existing Excel reporting tools. This feature facilitates seamless data transfer for further analysis and manipulation within familiar spreadsheet applications.
- **Report Writer:** Sterling includes a comprehensive, user-friendly report writer that simplifies the creation of bespoke reports. This tool enables users to generate tailored reports that meet specific business needs without requiring extensive technical expertise.
- **API Suite:** Sterling's robust API suite ensures that data can be seamlessly shared with other systems, including corporate data warehouses, document management systems, asset management tools, and dashboard solutions like Microsoft Power BI. This integration capability allows for broader distribution of data across various platforms, enhancing the accessibility and utility of information throughout the organisation.

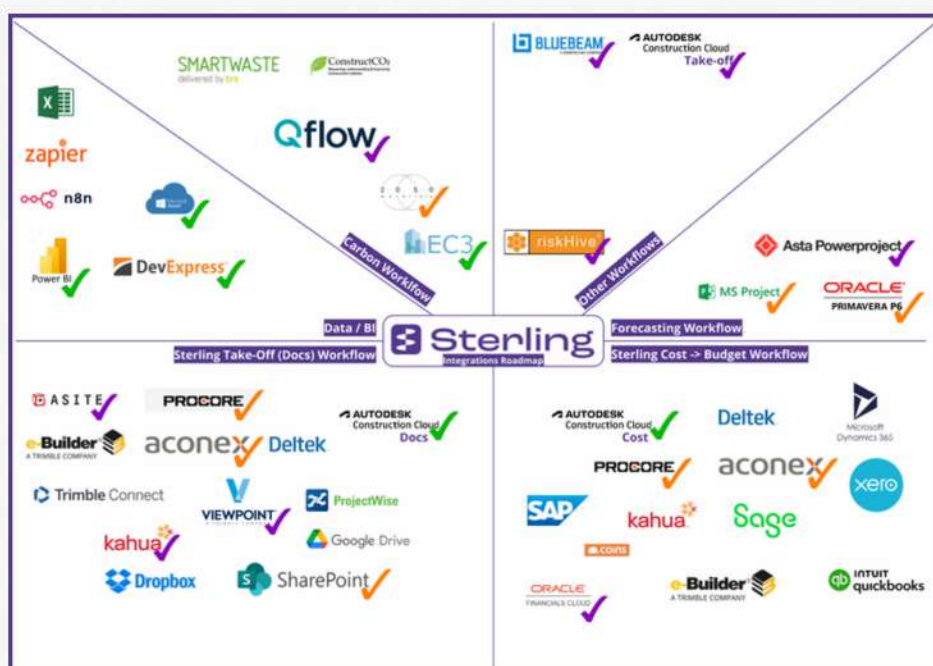
The screenshot displays the Sterling Report Writer interface. The main window shows a 'Cost Item Report' for a client named 'NHS'. The report includes a table with columns for 'Code', 'Description', 'Quantity', 'Unit', 'Unit Price', and 'Total'. The table lists various construction items, including 'Excavation, comprising work required on the drainage of a new original ground level to finished level', 'Substructure', 'Standard foundations', 'Strip foundations', and 'Retained wall foundations'. The report also includes a 'PREVIEW PARAMETERS' section on the right with fields for 'Cost or Carbon', 'Breakdown Code', and 'Breakdown Level'. The interface includes a top navigation bar with the Sterling logo and a 'REPORT WRITER' title, and a bottom status bar with the report name and page number.

9 - Integrations and APIs

Sterling's API suite offers a robust and flexible solution that simplifies the integration of Sterling's services into a company's digital ecosystem. Designed to be simple, reliable, and highly configurable, the API ensures businesses can easily incorporate Sterling's capabilities into their existing applications. With extensive API options, dedicated support, and decades of industry expertise, Sterling's API suite supports a wide range of background and identity screening options.

Sterling's API integrations are already enhancing the digital infrastructure of various organisations. A prime example is the flagship integration with Autodesk Construction Cloud, which highlights a significant partnership between Autodesk and Sterling DCS. This collaboration allows Autodesk to offer Sterling's advanced estimating capabilities to its extensive user community, demonstrating the trust and value placed in Sterling's technology.

For more information, you can read about our latest integration here: [New Autodesk Construction Cloud Integration from Sterling Enhances Construction Take-off and Estimating - Sterling.](#)



10 - UK Sovereign

Sterling DCS is a UK-developed solution that exemplifies the strength of British innovation. Conceived, designed, and developed within the UK, Sterling is supported by three additional partners based in the US, Australia and Canada for specialised assistance. Our commitment to data sovereignty ensures that all data hosting and processing occur within the UK, reinforcing data security, especially for sensitive and governmental projects.

Here's why this is crucial:

Data Sovereignty: By keeping data within the UK, Sterling adheres to strict local data protection laws, ensuring compliance and maintaining control over data access.

Reduced Risk of Data Breach: Trans-border data transfer can expose information to varying levels of security. Sterling's UK-centric hosting minimises this risk, providing a secure platform for confidential data.

Governmental Assurance: For government projects, which often deal with classified information, the assurance that data remains within national borders is essential. This aligns with national security protocols and preserves the integrity of sensitive operations.

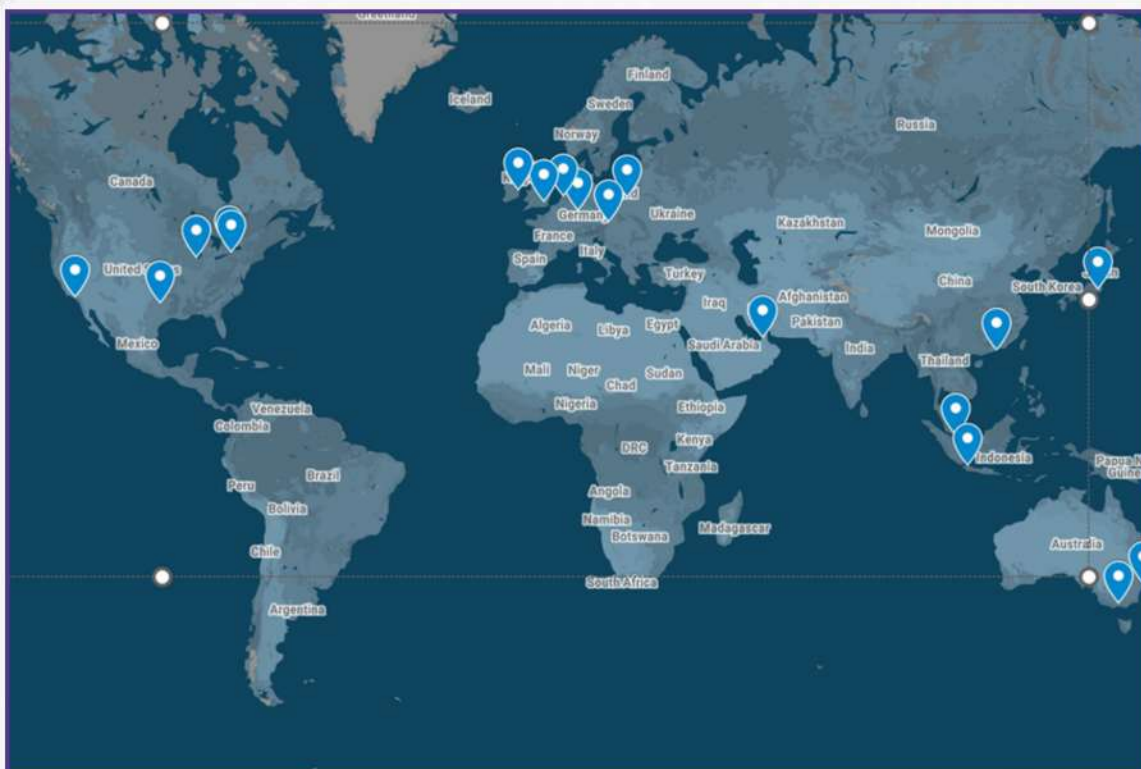
Sterling's dedication to maintaining data within the UK underscores its commitment to security, compliance, and customer trust—key elements for managing confidential or government projects

General Information

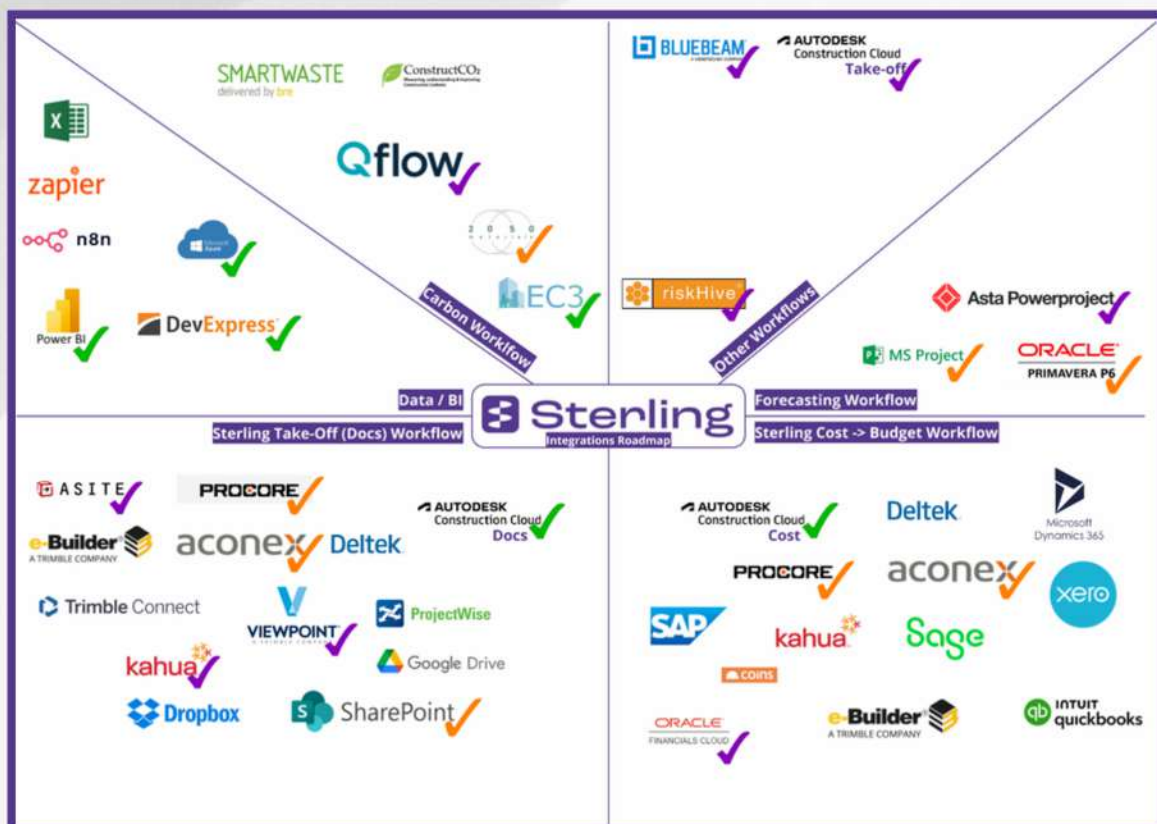
Hosting Opportunity and Flexibility: Sterling is a cloud-based solution offered through a Software as a Service (SaaS) model. Hosting in our Sterling Cloud is included in the licensing fee. However, if you prefer to use your own private cloud or require deployment in a high-security environment, Sterling offers full flexibility and can be deployed to any suitable hosting environment of your choice.

Sterling Hosting Regions: Sterling DCS has hosting partners across the globe including the United Kingdom, Ireland, Europe, USA, South America, Asia and Australia.

Our UK and Ireland hosting capability can be seen in the map below with the global locations also shown.



Sterling Technical Partners: Our technical partners cover many aspects of the project estimating and controls eco-system including such strategic organisations as Autodesk and Oracle as well as tactical integrations driven by the user community. We are committed to making the flow of data in the digital engineering space as simple and as robust as possible.



At Sterling, our mission is to revolutionise the construction industry by providing cutting edge preconstruction solutions that not only optimise project costs but also address the urgent need for carbon reduction. We are committed to advancing sustainability within the sector by equipping our clients with the tools necessary to make informed decisions that balance financial and environmental considerations. Our goal is to lead the way in sustainable construction, setting new standards for efficiency, innovation, and responsible resource management.

Want to learn more?

Book a demo today

sterling-dcs.com
info@sterling-dcs.com

