



# The Proof Overview

PROOF PRESENTATION

LAST UPDATED: JUNE 19, 2026

**trunksubmittal**

# Getting submittals **unstuck.**

Submittal review consumes 50–60% of an APM's day. Missed non-compliance shows up in the field — not on paper — making rework a risk. Submittal review cycle times put pressure on the schedule and submittals are often reviewed by less experienced project engineers or managers.

---

## CLEVELAND CONSTRUCTION ROLLED OUT TRUNKSUBMITTAL ON 4 JOB SITES AND SAW

- System spec compliance review under 10 minutes per submittal, down from 2 hours previously.
- 96% of non-compliant submittals caught before they reach the architect.

**CLEVELAND  
CONSTRUCTION**  
General Contracting & Construction Management

# 55 → 13d

## Submittal cycle time reduction

43% → 2% STUCK SUBMITTALS (>60 DAYS)

---

“[The architect] already suggested us for more work inside that market because of the process that we've had on the front end and how detailed we have been. I think Trunk Tools is a big part of this.”

**BRYANT CAPORALE — ASSISTANT PROJECT MANAGER**  
CLEVELAND CONSTRUCTION



# Spanning the experience gap.

Field teams lose 20–40 minutes per question hunting through disconnected document systems. For supers managing crews where many people on site are rookies, every unanswered question is a decision delayed or a mistake waiting to happen.

---

## TORCON DEPLOYED TRUNKTEXT AND SAW:

- 23 active users across the project team.
- 1,100+ document queries and an estimated 25 min saved per prompt on average.



# 453 hrs

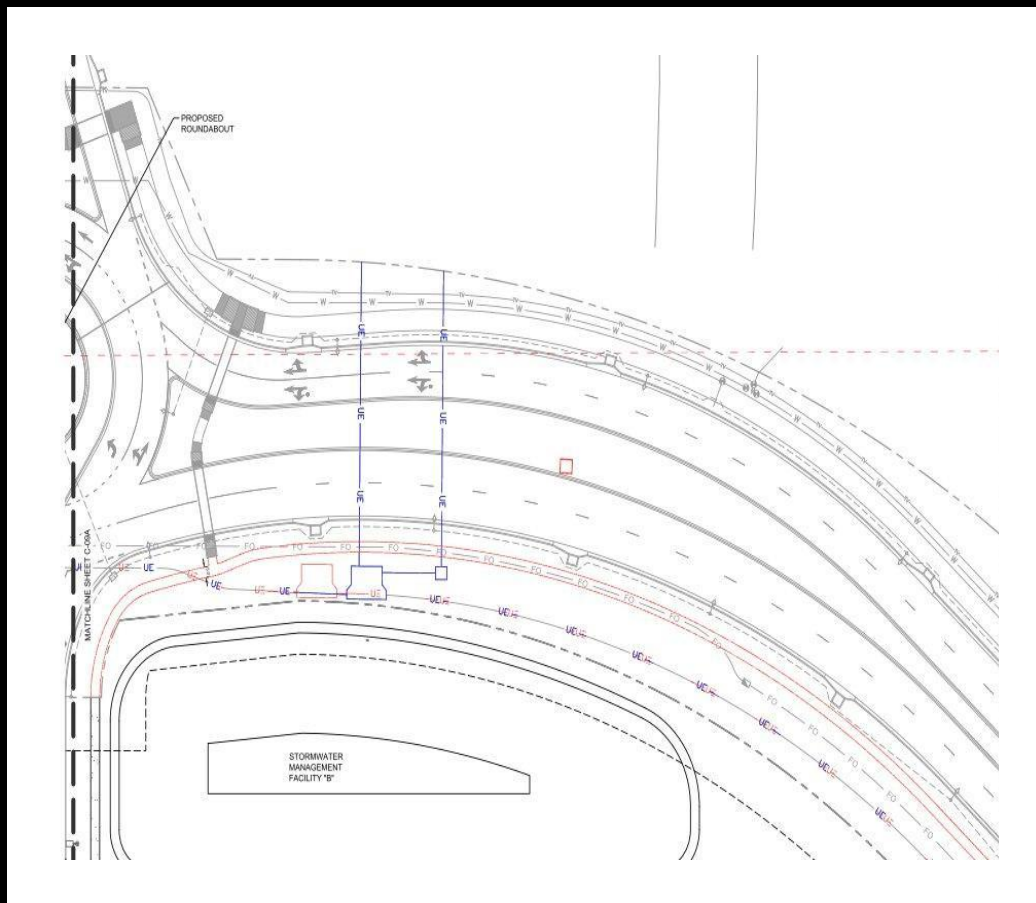
saved in the first  
four months.

---

“TrunkTools is definitely a time saver. For the first dive into any particular topic, I’ve been using it because it takes some of the human error out of the equation.”

**MARK LUZ — SUPERINTENDENT**

TORCON

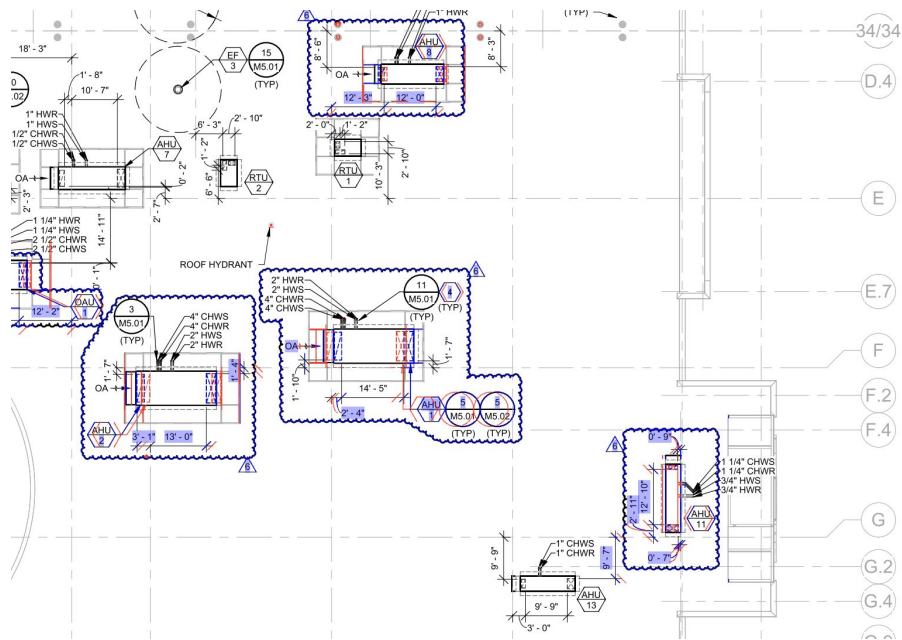


A civil change on sheet C-09B. Not clouded. Not in the narrative.

A bulletin revision on a highway travel center project included a civil change on sheet C-09B. It wasn't clouded. It wasn't called out in the design narrative. On a manual review, it might have passed through undetected.

**Bulletin issued to Autodesk Forma.**

**TrunkReview found the issues automatically.**



SHEETS FLAGGED BY TRUNKREVIEW  
M3.00 • M1.01 • M1.02 • M1.03 • M1.04

## 8 AHUs relocated. Roof penetration impacts: not in any narrative

### WHAT THE NARRATIVE SAID

G709 defers all MEP changes to the mechanical engineer's narrative. The engineer shifts 9 AHUs to avoid structural joists. But the roof curb and penetration impacts: not summarized in any narrative.

### WHAT TRUNKREVIEW CAUGHT

AHU relocations confirmed with revision clouds on M3.00 (AHU 3, 4, 8, 9). Clouded ductwork revisions on M1.01, M1.02, and M1.04. Eight AHUs and one OAU have revised roof penetration locations — quantity and extent not captured in any narrative.

**Roof curb and penetration scope not priced. Owner killed the change before a full CO exercise.**

**\$1M CO exposure mitigated.**

"IT WOULD HAVE BEEN CATASTROPHIC, WHAT YOU GUYS CAUGHT." — PROJECT MANAGER

# Doesn't Procore have AI?

	Procore + Datagrid	Trunk Tools
Built For Construction	Generic LLMs underneath. No construction -specific eval dataset.	<b>Purpose-built. 4+ years of model training. Millions of real construction docs. 500+ active U.S. projects.</b>
Drawing Review	No drawing review with change detection. Document management only.	<b>Detects clouded and non-clouded changes. 2M+ labeled objects. 20-sheet bulletin auto-reviewed in &lt;5 min.</b>
Agent Setup	Your team builds the agents. Configuration, prompting, ongoing maintenance.	<b>Zero setup. Live on day one. No workflows to build or logic to maintain yourself.</b>
Connected Intelligence	No inter-agent orchestration. Workflows run independently.	<b>Agents hand off to each other with full context preserved.</b>
Pricing	Consumption-based credits. Costs scale as adoption grows. Disincentive for usage.	<b>Predictable annual pricing. Unlimited usage, unlimited users.</b>

# In their own words:



“[The architect] already suggested us for more work inside that market because of the process that we’ve had on the front end and how detailed we have been. I think Trunk Tools is a big part of this.”

**BRYANT CAPORALE**  
ASSISTANT PROJECT MANAGER

“ I have significantly less revise and resubmit requests, and even received a few shoutouts from the design team for attention to detail with submittal reviews.”

**CHELSEA VU**  
PROJECT ENGINEER

“I think it's very helpful for someone who doesn't have the experience. It makes it easier to digest the information I would say than getting overwhelmed with 500 drawings and 2,500 pages of a spec. When I don't know where to start, it gives me a head start.”

**BRIAN LAUSTSEN**  
PROJECT ENGINEER

"We went from having four team members go through [a revision] to maybe just assigning two team members to go through it...[And] typically you would have one person just typing out every single change. The beauty about this is it actually sends you a Word document with everything typed up."

**JOSUE PAREDES**  
SENIOR PROJECT MANAGER

# In their own words:



The logo for Suffolk, consisting of the word 'SUFFOLK' in a bold, sans-serif font inside a white rectangular border.



The logo for AMLI Residential, featuring the word 'AMLI' in a bold, sans-serif font above the word 'RESIDENTIAL' in a smaller, all-caps, sans-serif font.

"Something that would normally take me 20 minutes or more to thumb through and find what I needed, I punched it in and I had it in two minutes. Exactly what I needed."

**ZACH WILLIAMS**  
SUPERINTENDENT

"Trunk Tools showed that it can help our teams increase efficiency and save significant time by preventing rework. With TrunkText doing the 'document digging' for me, I can work more effectively and be more responsive in the field."

**ANDY ROY**  
SUPERINTENDENT

"Trunk Tools is definitely a time saver. For the first dive into any particular topic, I've been using it because it takes some of the human error out of the equation."

**MARK LUZ**  
SUPERINTENDENT

"Trunk Tools has been invaluable in parsing through data quickly, making it easier for everyone to stay on top of their tasks."

**MIKE TRENSKI**  
DIRECTOR OF CONSTRUCTION TECH

# In their own words:



The logo for Suffolk, consisting of the word 'SUFFOLK' in a bold, white, sans-serif font inside a white rectangular border.

The logo for Harkins, featuring a stylized geometric icon of three squares to the left of the word 'HARKINS' in a bold, white, sans-serif font.

The logo for Gilbane, featuring the word 'Gilbane' in a bold, white, sans-serif font with a white rectangular background behind the letters 'ilbane'.

“TrunkSubmittal gives a junior PE five-plus years of experience to work with.”

**ELLIOT CHRISTIANSEN**  
SVP OF OPERATIONS

“My team was facing challenges documenting all our standard operating procedures and capturing all that data. It was almost impossible to search through all that data and call up the information we needed, when we needed it.”

**KELSEA GAUGER**  
VP OF OPERATIONAL EXCELLENCE

“In terms of applying AI to project team workflows in a way that delivers real value on our jobsites, Trunk Tools is the best partner you can find. Their team goes above and beyond to ensure we have strong adoption, which is not the case with every technology vendor.”

**PATRICK HENNESSY**  
PLANNING & ANALYTICS EXECUTIVE

“Partnering with Trunk Tools allows us to apply AI where it matters most, tackling complex, high-impact challenges that have traditionally lacked clear solutions. Drawing review is a prime example.”

**HEIDI DEBENEDETTI**  
CHIEF OPERATING OFFICER