

SIREN™ Jukebox

Product registration

To register on-line with Sonic Foundry, please follow the steps outlined in the registration wizards upon installation of this product.

Registering your product will provide technical support, notification of product updates, and special promotions exclusive only to Siren registered users.

Sonic Foundry product registration helps protect against software copyright infringement and allows us to provide support exclusive to registered users.

If you do not have access to the Internet, registration assistance (in English) is available. Please contact our Customer Service Department, 24 hours per day, seven days per week.

Telephone

- 1-800-577-6642 (toll-free) in the US, Canada, and the Virgin Islands.
- +800-000-76642 (toll-free) in Australia, Denmark, France, Germany, Italy, Sweden, UK, Netherlands, and Japan.
- +608-256-3133, extension 2300 in all other countries.

E-mail

customerservice@sonicfoundry.com

Fax

1-608-250-1745

Technical Support

1-608-256-5555 Monday through Friday between 7am and 10pm (CST).

Fax: 608-250-1745

E-mail: support@sonicfoundry.com

Sonic Foundry, Inc.
754 Williamson Street
Madison, WI 53703

Sonic Foundry Europe

PO Box 2903
2601 CX Delft
Netherlands

The information contained in this manual is subject to change without notice and does not represent a commitment on the part of Sonic Foundry. The software described in this manual is provided under the terms of a license agreement or non-disclosure agreement. The software license agreement specifies the terms and conditions for its lawful use. No part of this manual may be reproduced or transmitted in any form or by any means for any purpose other than the purchaser's personal use, without written permission from Sonic Foundry, Inc.

Sonic Foundry and **Siren** are trademarks of Sonic Foundry, Inc. All other products mentioned in this manual are trademarks or registered trademarks of their respective holders.

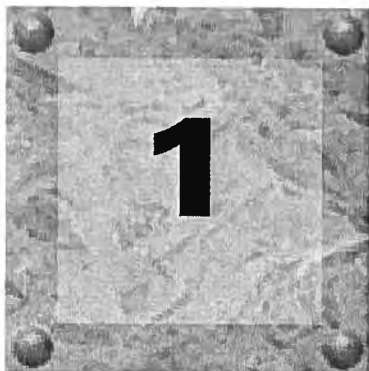
© 2000 Sonic Foundry, Inc.

Table of Contents

SIREN™ Jukebox

Table of Contents	i
Overview	1
Introduction	1
SIREN Jukebox Highlights	1
System Requirements	2
Registration	2
Music Files	5
Main Window	5
Using Online Help	6
Setting Up SIREN Jukebox	9
SIREN Jukebox Settings	9
Customizing the SIREN Jukebox Screen	9
Configuration Wizard	10
Searching for Music on a Hard Drive	13
Searching for Music in a Network, Removable Drive, or Folder	13

SIREN Jukebox Panels	15
Organizing Music.....	23
Organizing Music	23
Clean Database	32
Advanced Music Management	32
Playing and Recording Music	41
Playing Music Files with SIREN Jukebox.....	41
The Current Playlist.....	41
Playing CDs.....	47
Recording from CD.....	49
Custom CDs.....	53
Creating CDs.....	53
Closing the CD Session	56
Downloading Music to a Portable Player	57
Sending Music to a Portable Player	57
Managing the Portable Player	61
Index.....	63



Overview

Introduction

Sonic Foundry's SIREN™ Jukebox allows you to play audio CDs and music files of various formats from your computer. SIREN Jukebox will record music from your personal CD collection to your computer for playback, as well as allow you to create custom CDs and download music to portable players.

With SIREN Jukebox, you can organize create and organize a personal music library, making it easy to locate a specific song, even in an extensive collection. SIREN Jukebox will also sort, group, and filter your music library to create custom playlists for any occasions.

This manual describes the basic features of SIREN Jukebox, and provides the procedures needed to take full advantage of the program.

SIREN Jukebox Highlights

Siren will help build and manage your music collection by:

- Playing CDs and music files.
- Recording music from CDs to the computer for playback.
- Organizing music into playlists.
- Storing extensive database information for your music library.
- Helping you download music from the Internet.
- Creating custom CDs from your music library.
- Downloading music to portable players.

System Requirements

The system's components affect Siren's performance. What follows is a list of the minimum, common, and recommended system requirements.

Minimum System Requirements

- 200 MHz processor
- VGA display
- 32 MB RAM
- DirectX Media 6.0 or later

Common System Requirements

- Microsoft ® Windows™ 98, 2000, or NT 4.0
- CD-ROM drive
- Supported CD-Writer (for CD writing features)
- Supported portable player (for portable player features; not available for Windows NT or Windows 2000 systems)
- 20 MB hard-disk space for program installation
- Windows-compatible sound card
- Internet Explorer™ 4.0 or later to view the online help
- 1024x768 pixel screen area

Recommended System Requirements

- 4 GB of hard drive space (This allows for storage of over 100 CDs).

Note: When recording at CD quality, one minute of recorded music uses 1 Mb of storage space.

- 24-bit color display (for viewing spectrum and scope analysis)
- 64 MB RAM

Registration

Registering a SIREN Jukebox Download

Users who own a full version of Siren 1.0 and download Siren 1.5 from the Sonic Foundry web site, need only to uninstall the previous version and install the updated application. The Siren 1.0 serial number or product unlock key will unlock a full version of Siren 1.5.

Once Siren is unlocked, choose **Register Siren** from the **Help** menu and follow the dialog instructions to register the program. While registering is not mandatory, it allows Sonic Foundry to provide you with technical support, application updates, and special promotions.

Registering a Sonic Foundry SIREN Jukebox CD

Sonic Foundry's new browserless registration process allows owners to immediately begin taking full advantage of Siren's powerful array of features. The system will automatically detect if Siren is being installed from an authentic Sonic Foundry CD, and if so, unlock all of the program's features without requiring any user input.

Once Siren is unlocked, choose **Register Siren** from the **Help** menu and follow the dialog instructions to register the program. While registering is not mandatory, it allows Sonic Foundry to provide you with technical support, application updates, and special promotions.



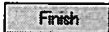
If the application was not purchased, users may elect to purchase a full version of Siren, or use Siren XPress.

Purchasing a Full Version of SIREN Jukebox

If Siren was not purchased, a registration dialog is displayed the first time the program is launched. From this dialog, users may elect to enter a serial number for a full version of Siren, or use Siren XPress.

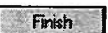
Purchasing SIREN Jukebox Online



To purchase Siren online:

1. Select the I would like to use Siren XPress radio button and click . Siren XPress is launched.
2. From the **Help** menu, choose **Instant Upgrade**. The Purchase Upgrade dialog is displayed.
3. Select the I want to purchase online radio button and click . The system attempts to launch its browser and connect to the Sonic Foundry Web site.
4. Follow the instructions to purchase the upgrade. When the transaction is completed a Product Unlock Key is e-mailed to the user.
5. Enter the Product Unlock Key and click . The full version of Siren is unlocked.

Purchasing SIREN Jukebox Over the Phone

To purchase Siren over the phone:

1. Select the I would like to use Siren XPress radio button and click . Siren XPress is launched.
2. From the **Help** menu, choose **Instant Upgrade**. The Purchase Upgrade dialog is displayed.

3. Select the I want to purchase over the phone radio button and click . The Purchase Upgrade via Phone dialog is displayed.
4. Write down the provided Computer ID number and contact the Sonic Foundry Customer Service Department at:
 - 1-800-577-6642 in the U.S., Canada, and the Virgin Islands
 - +800-000-76642 in Austria, Denmark, France, Germany, Italy, Sweden, UK, Netherlands, and Japan
 - +608-256-3133 extension 2300 in all other countries
5. When the transaction is complete, enter the Product Unlock Key and click . The full version of Siren is unlocked.

Note: *Note: The Computer ID is a number that serves to identify the computer for licensing purposes only, and contains no specific information about you, your computer, or any files or other data on your system. Sonic Foundry is aware of your privacy concerns and strives to collect only as much data as is required to make your Internet and/or product use experience as efficient and satisfying as possible.*

Using SIREN Jukebox XPress

Users not wishing to purchase a full version of Siren may use Siren XPress, a limited version of the application, free of charge. To avoid confusion, features included only in the full version of Siren are identified with the following icon:



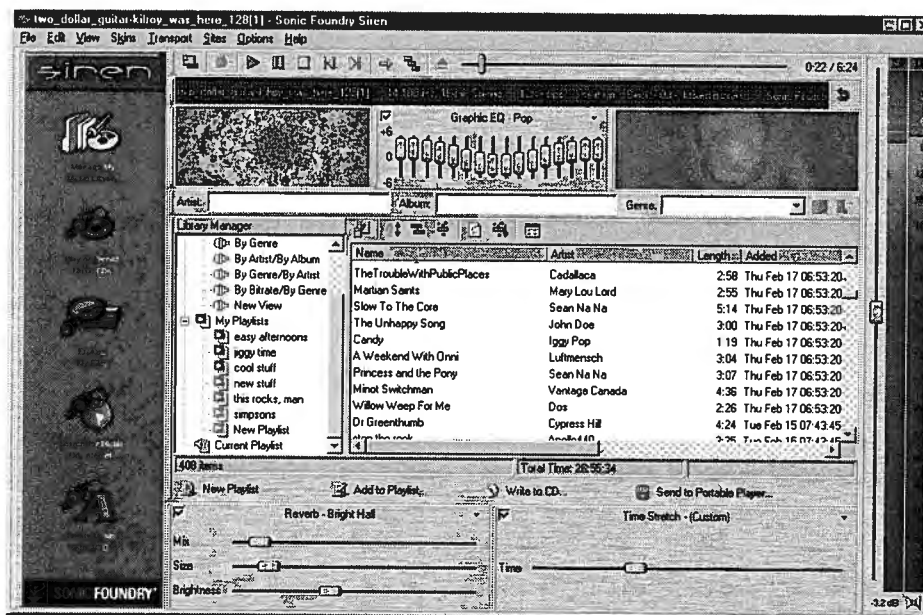
Music Files

Music files are any audio file Siren will playback from the computer. Siren supports the following audio file formats:

File Type	Extension	Description
Wave (Microsoft)	*.wav	Standard audio format used on Windows-based computers.
MPEG Layer 3	*.mp3	Popular audio compression format. In addition to playing .mp3 files, Siren can create .mp3 files from music recorded off audio CDs, and from .wav files. .Mp3 files are the only files that can be downloaded to portable players.
Windows Media Audio	*.wma	Microsoft file compression format that provides security features to prevent unauthorized duplication. In addition to playing .wma files, Siren can also create .wma files from music recorded off audio CDs, as well as from .wav and .mp3 files.

Main Window

Siren's main window and panels are depicted below. Each of the labeled panels can be toggled on/off by choosing the appropriate panel in the **View** menu. *For more information, see SIREN Jukebox Panels on page 15.*



Note: For detailed information regarding the main window, refer to online help.

Using Online Help

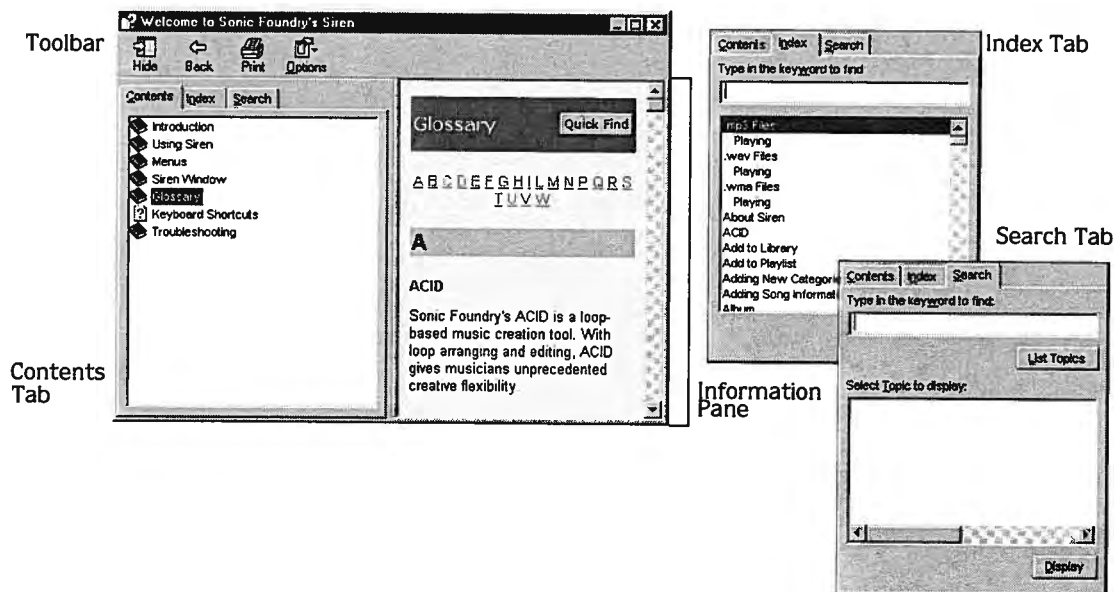
Siren includes online help, which contains detailed information about all program components and functions. Internet Explorer 4.0 or higher (included on the Siren CD-ROM) must be installed on the system to view online help.

Accessing Help

Online help is displayed using the keyboard or the **Help** menu.

Main Help Window

The main help window is displayed by choosing Contents and Index from the **Help** menu or by pressing the **[F1]** key. The main help window contains three tabs which are used to locate the desired information.



The Contents tab provides a categorized listing of available help topics. Click a book (📖), and a topic page (📄) to display a topic.

The Index tab provides a complete listing of the help topics available. Use the scroll bar to scroll through the list or enter a word in the text box to quickly locate related topics. Select the topic and click **Display**.

The Search tab allows users to enter a keyword and display all pertinent topics in online help. Enter a keyword in the text box and click **List Topics**. Select a topic from the list and click **Display**. The selected topic is displayed in the information pane.

Help on the Web

Additional help is available on the Sonic Foundry web site. To quickly connect to the Sonic Foundry web site, choose **Sonic Foundry on the Web** followed by the appropriate help subject from **Help** menu. Siren launches an internal browser and attempts to connect to the appropriate page on the Sonic Foundry web site, via your Internet Service Provider (ISP).



Setting Up SIREN Jukebox

SIREN Jukebox Settings

Prior to using Siren, users must configure various operating settings to allow them to take full advantage of Siren's features.

Before using Siren for the first time, users should:

- Customize the Siren window; displaying, sizing, and arranging panels to make the screen as comfortable and intuitive as possible. *For more information, see Customizing the SIREN Jukebox Screen on page 9.*
- Specify the music library folders using the Configuration Wizard. *For more information, see Configuration Wizard on page 10.*
- Verify that the computer is configured to play CDs automatically. *For more information, see CD Autoplay on page 47.*
- Search the computer for music to begin building a music library.

Customizing the SIREN Jukebox Screen

Users can move and resize the majority of Siren's panels. Panels can also be toggled on/off by choosing the appropriate panel from the **View** menu. *For more information, see SIREN Jukebox Panels on page 15.*

Configuration Wizard

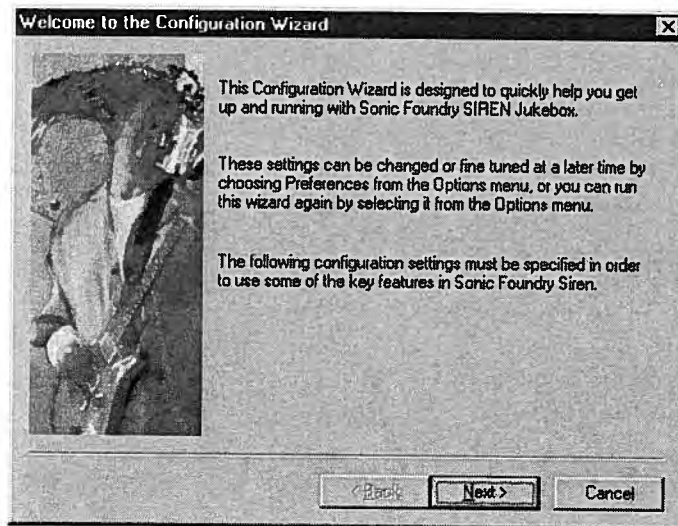
The Configuration Wizard is automatically launched the first time Siren is run, and allows users to configure their Siren preferences.


Note: *The Configuration Wizard can also be launched by choosing Configuration Wizard from the **Options** menu.*

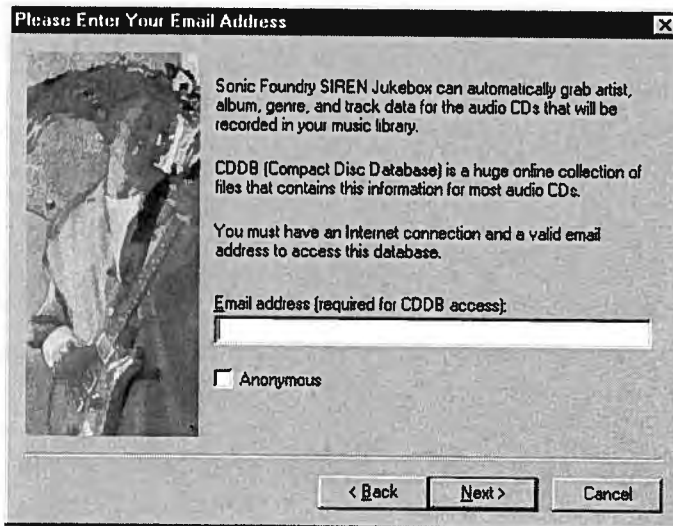
Completing the Configuration Wizard


To use the Configuration Wizard:

1. Choose Configuration Wizard from the **Options** menu. The Welcome to the Configuration Wizard dialog is displayed.

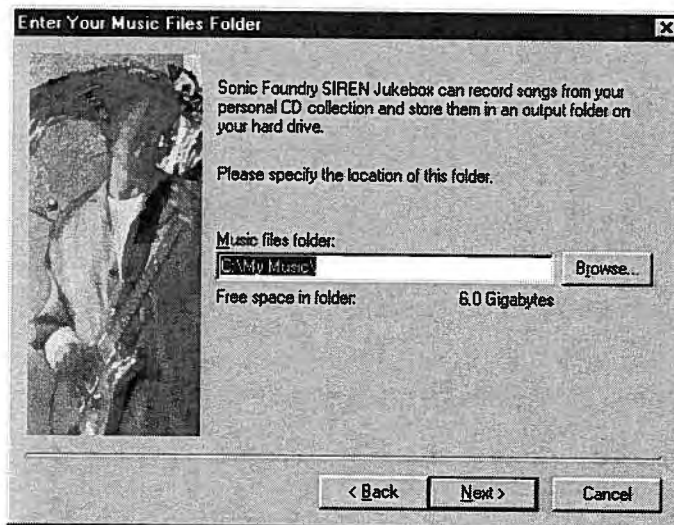




2. Click . The Please Enter Your Email Address dialog is displayed.

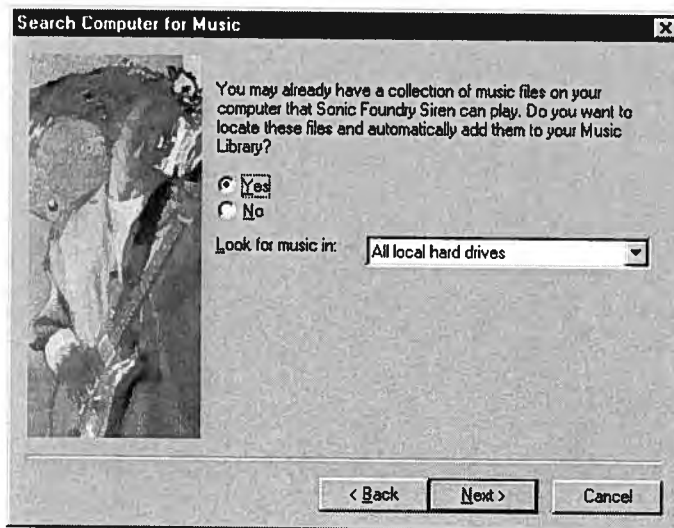



3. Enter an appropriate e-mail address in the field and click . The Enter Your Music Files Folder dialog is displayed.

Note: Users not wishing to provide an e-mail address can simply select the Anonymous checkbox.



4. Accept the default folder location or click  and select the system folder in which Siren will store music files.
5. Click . The Search Computer for Music dialog is displayed.

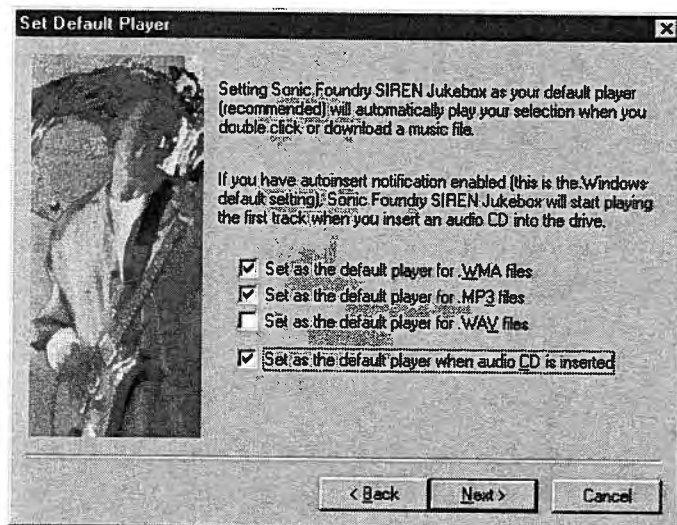



6. If necessary, specify a drive to search from the Look for music in drop-down list and click . Siren searches the selected hard drive(s) and indicates the number of music files found.

Note: Users not wishing to search for music should select the No radio button.

For more information, see *Searching for Music on a Hard Drive* on page 13.

7. Click . The Set Default Player dialog is displayed.



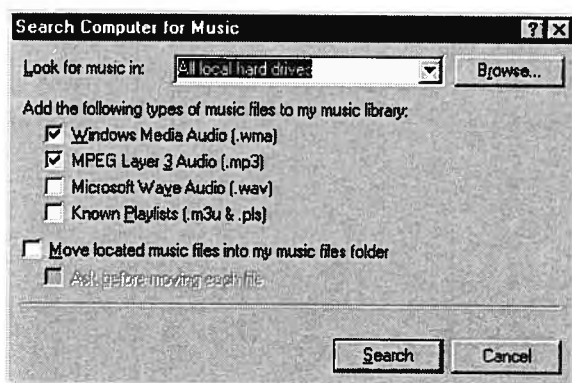
8. Select the checkbox(es) corresponding to the file type(s) for which Siren will serve as the default player.
9. Click . Siren's preferences are configured. Individual settings may be edited by choosing Preferences from the **Options** menu.

Searching for Music on a Hard Drive

Siren will scan the specified drive(s) for .wav, .mp3, and .wma files, then either physically move the files to the music files folder or simply add links to each song.



To search the computer for music:

1. Choose Search Computer for Music from the **Options** menu. The Search Computer for Music dialog is displayed.



2. Specify the drive(s) to be searched in the Look for music in drop-down list.
3. Select the checkbox(es) corresponding to the file format(s) to be added.
4. To physically move files to the music library folder, select the Move located music files into my music files folder checkbox.

When this checkbox is cleared, music files remain in their system location, and Siren simply creates links to the Manage My Music Library view.

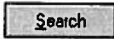

5. Click  to begin searching. Once Siren has completed the search, it indicates the number of music files found.
6. Click . The music search is completed and Siren's main window is displayed.

Searching for Music in a Network, Removable Drive, or Folder

To search a network, removable drive, or folder for music:

1. Select the Navigator panel's Explore My Files icon.
2. Use the tree view to select the drive or folder to be searched.
3. Right-click and choose Search For Music from the shortcut menu.
4. The Search Computer for Music dialog is displayed.
5. Select the checkbox(es) corresponding to the file format(s) to be added.
6. To physically move files to the music library, select the Move located music files into my music files folder checkbox.

When this checkbox is cleared, music files remain in their system location, and Siren simply creates links to the Manage My Music Library view.


7. Click  to begin searching. Once Siren has completed the search, it indicates the number of music files found.
8. Click . The music search is completed and Siren's main window is displayed.

Compact Mode

Siren allows users to place the application in compact mode and use skins to give the Siren a new look. Though skins typically include only a portion of available Siren controls (often only the Transport bar) they are convenient for placing on the desktop and providing limited Siren control while working in another application.

Toggling Compact Mode On/Off

Users can toggle between Siren's compact and normal modes by:

- Clicking  in the Transport toolbar
- Choosing Compact/Skin Mode from the **View** menu
- Pressing **Ctrl+M** on the keyboard

Selecting a Skin

Siren features a number of built-in skins. To use a skin, simply select it from the **Skins** menu. Siren is automatically placed in compact mode and the new skin is displayed.

Getting More Skins

Users can download additional Siren skins, as well as the resources needed to create custom skins. To download new skins, or the Sonic Foundry Skin Grafters Kit, choose **Get Skins** from the **Skins** menu. Siren launches the internal browser and attempts to connect to the page of the Sonic Foundry web site dedicated to Siren skin support.



SIREN Jukebox Panels

SIREN Jukebox Panels

Siren features a number of panels designed to help manage music collections, customize audio attributes, and enhance the jukebox experience.

Displaying Panels

To toggle a panel display on/off, select the appropriate panel from the **View** menu.

Navigator



The Navigator panel displays several icons designed to assist users in acquiring and managing personal music libraries.

My Music

The Manage My Music Library icon displays the contents of a personal music library, views and playlists, in the Explorer panel.

Audio CD

The Play or Record Music CDs icon lists the contents of the audio CD in the system's current CD drive.

Explore

The Explore My Files icon launches an Explorer within Siren, allowing users to navigate the system without exiting the application.

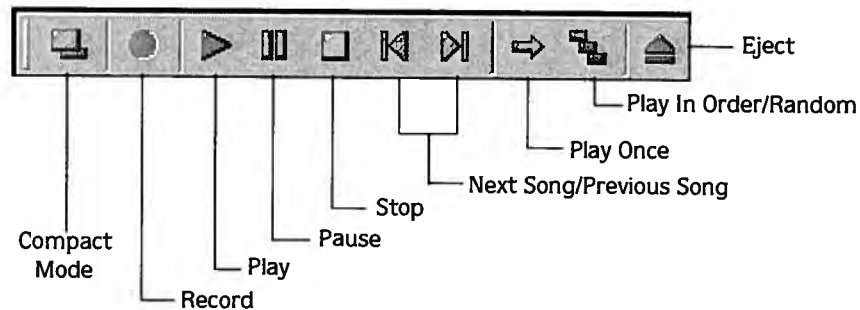
Get Music

The Search for Music on the Internet icon launches Siren's internal browser and displays links to several Internet music resource sites.

Create Music

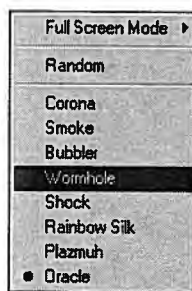
The Create Music with ACID icon launches any Sonic Foundry ACID product installed on the system. If an ACID product is not located on the system, Siren launches an internal browser and attempts to connect to the area of the Sonic Foundry web site dedicated to ACID.

Transport



The Transport panel contains buttons corresponding to Siren's music playback control. For more information regarding the Transport panel, refer to online help.

Spectrum



Spectrum is one of Siren's two visual displays. The Spectrum panel is capable of displaying real-time visualizations based on FFT (Fast Fourier Transform) analysis of songs.

Selecting the Spectrum Display

To select the Spectrum panel display, right click on the panel and choose the desired display from the shortcut menu.

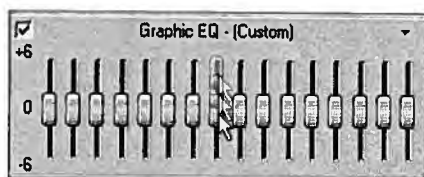
Full Screen Mode

Selecting full screen mode expands the Spectrum display to fill the screen at a user-specified resolution.

Graphic EQ

The Graphic EQ panel divides the audio spectrum in sixteen bands, and allows users to customize their listening experience by boosting or cutting specific frequencies.

Setting the Graphic EQ

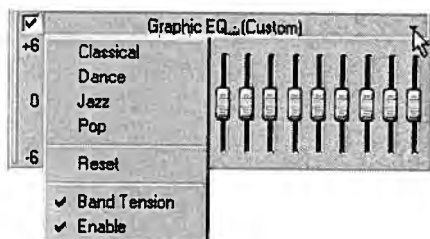


To adjust a band, left-click on the fader thumb, and using the mouse, drag it up or down. If **Band Tension** is disabled, individual bands can be adjusted independent of the surrounding faders. If **Band Tension** is enabled, adjusting a fader affects all adjacent faders.

Enabling Graphic EQ

Selecting the Graphic EQ checkbox applies equalization to the current audio. Clearing the checkbox bypasses the current EQ settings.

Graphic EQ Shortcut Menu



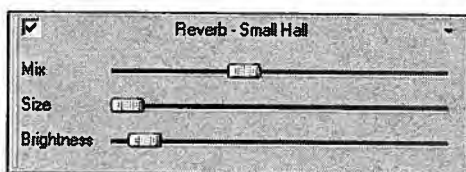
Clicking the title bar of the Graphic EQ panel displays the Graphic EQ shortcut menu. Using this shortcut menu, users can quickly:

- Select an EQ preset
- Reset all EQ bands
- Toggle **Band Tension** on/off
- Enable/disable the Graphic EQ



Reverb

Reverb simulates the acoustics of various venues and situations. It can also be used to create interesting effects by placing sounds in spaces, real and otherwise, where they are normally not heard.

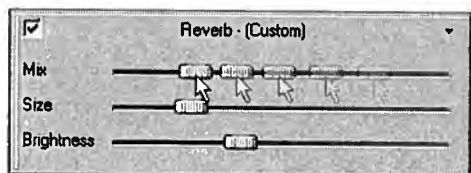


Configuring Reverb

Configuring Siren's Reverb involves three individual parameters:

- **Mix** determines the amount of processed sound in the output. When **Mix** is set to 100%, only the reverberated signal is heard. For more realistic reverb effects, reduce the mix level.
- **Size** determines the time lapse between the initial audio and the onset of reverberation. This, in turn, determines the illusion of the size of the acoustic space. Longer times are associated with larger spaces, therefore, increasing the **Size** values simulates a larger room.

- Brightness determines the reverb decay time. In a dampened room, walls absorb sound quickly, whereas in a bright room, such as a gymnasium, walls reflect more sound. Reverberation in a bright room lasts substantially longer than in a damp room, therefore, increasing the Brightness level simulates a larger, brighter venue.



Like Graphic EQ, Reverb values are set by left-clicking on the appropriate slider thumb and dragging it to the left or right:

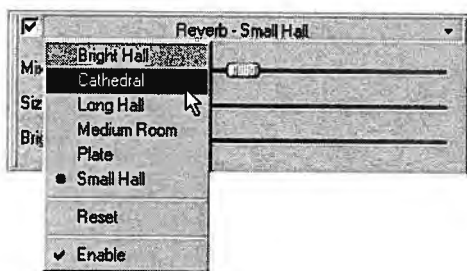
- Moving the thumb to the right increases the value.
- Moving the thumb to the left decreases the value.

Users are encouraged to experiment freely with the Reverb parameters to create custom effects.

Enabling Reverb

Selecting the Reverb checkbox applies reverberation to the current audio. Clearing the checkbox bypasses the current reverb settings.

Reverb Shortcut Menu

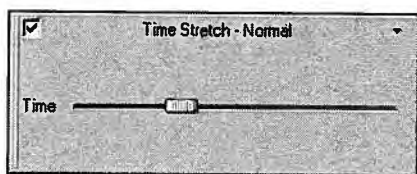


Clicking the title bar of the Reverb panel displays the Reverb shortcut menu. Using this shortcut menu, users can quickly:

- Select a Reverb preset
- Reset all Reverb parameters
- Enable/disable the Reverb



Time Stretch

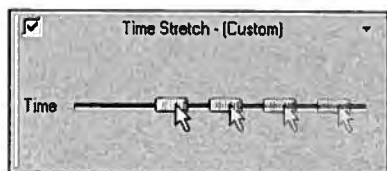


Time Stretch alters the length of a song without changing its pitch. It is important to realize that this feature is most effective for applying light to medium time compression or expansion. Attempting to severely alter the length of a song typically results in a distracting distortion of the audio signal.

Setting Time Stretch

To set Time Stretch, left click on the slider thumb and drag it left or right:

- Moving the thumb to the right speeds the song up, thereby decreasing its length.
- Moving the thumb to the left slows the song down, thereby increasing its length.



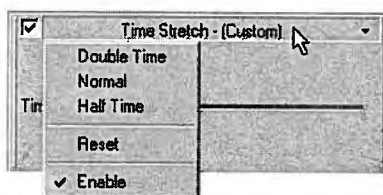
Notice that the Time Stretch value is depicted as a percentage of the song's original speed.

Note: Double-clicking the Time Stretch slider thumb returns the song to its original length and tempo.

Enabling Time Stretch

Selecting the Time Stretch checkbox applies the current setting to the audio. Clearing the checkbox bypasses the current time stretch settings.

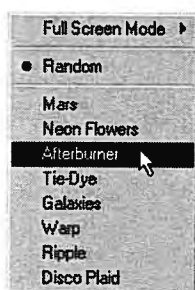
Time Stretch Shortcut Menu



Clicking the title bar of the Time Stretch panel displays the Time Stretch shortcut menu. Using this shortcut menu, users can quickly:

- Double the length of a song
- Halve the length of a song
- Restore a song to its original length and tempo
- Enable/disable Time Stretch

Scope



Scope, Siren's other visual effect, displays real-time visualizations based on waveform analysis of songs.

Selecting the Scope Display

To select the Scope display, right click on the panel and choose the desired display from the shortcut menu.

Full Screen Mode

Choosing full screen mode expands the Scope display to fill the screen at a user-specified size resolution.

Song Info

The Song Info panel lists the artist, album, and genre of the current song.



Status Bar

The Status Bar is a scrolling display that provides playback information, based on whether Siren is in Playback or Recording mode.

Playback Status Bar

During playback, the Status Bar displays:

- The current song's title, artist, album, sample rate, bit-depth, channels, and bit rate
- The next song's title, artist, and album



Recording Status Bar

During recording, the Status Bar displays:

- The name of the song being recorded, its track number, and sample rate
- Size of the song (in MB)
- Drive location of the music library
- Space remaining on drive

Volume

The Volume panel, which contains a volume fader and level meters, allows users to determine and monitor Siren's playback volume.

Setting Volume

To set Siren's volume, left-click the fader thumb and drag it up or down:

- Moving the thumb up increases playback volume.
- Moving the thumb down decreases playback volume.

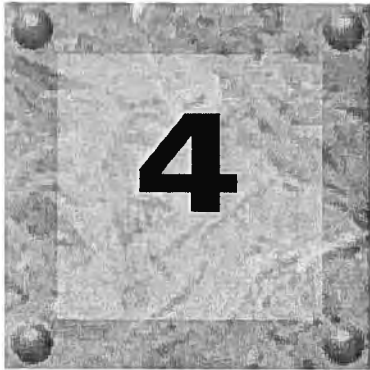
Volume Shortcut

Right-clicking the Volume panel displays the Volume shortcut menu. Using this menu, users can:

- Reset volume level clips

-
- Enable/disable volume meter labeling
 - Determine labeling increments
 - Enable/disable the hold peak and hold valley features

For additional information on any of Siren's panels, refer to online help.



Organizing Music

Organizing Music

Music in the Manage My Music Library view can be categorized, sorted, and filtered. Siren organizes songs based on information provided with the song, including artist, album, and genre. If information is not available for a song, Siren places it in an Unknown folder in each category.

In addition to predefined organization included in the Manage My Music Library view, Siren can create custom playlists. *For more information, see Custom Playlists on page 29.*

CD Information

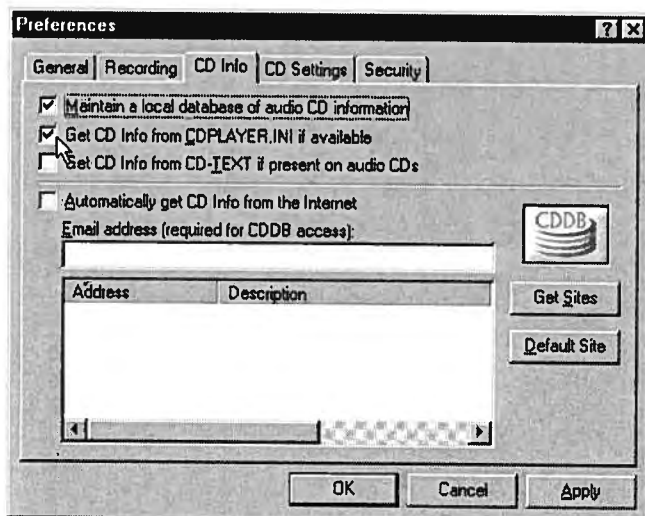
If Siren is able to retrieve information about a CD, either from the CD itself or a local database, this information is displayed.


Configuring CD Information Preferences

Prior to using the Siren's CD information features, users must configure the music database preferences.

To set the music database preferences:

1. Choose **Preferences** from the **Options** menu. The Preferences dialog is displayed.
2. Select the CD Info tab.



3. Select the checkbox(es) corresponding to the desired CD information option(s) and click . Siren is configured to retrieve CD information automatically when a CD is inserted and the Play or Record Music CDs icon is clicked.

Compact Disc Database

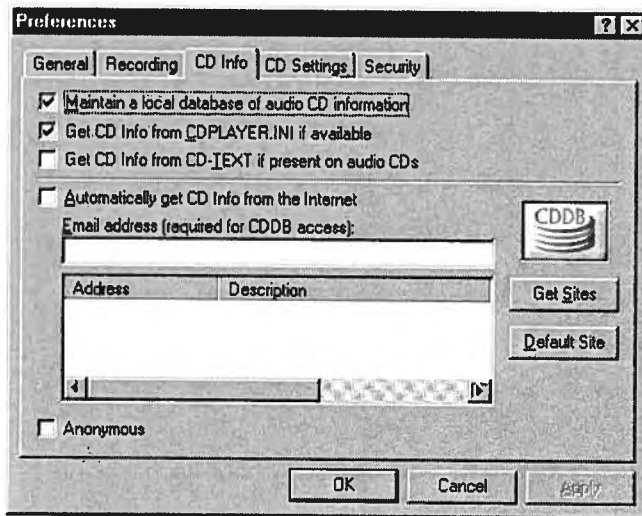
In addition to the previously discussed option, Siren can retrieve CD information over the Internet from the Compact Disc Database (CDDb).

Configuring CDDb

Users typically configure CDDb in the Configuration Wizard that is launched the first time Siren is run. However, CDDb configuration can be edited at any time.

To edit the CDDb configuration:

1. Choose Preferences from the **Options** menu. The Preferences dialog is displayed.
2. Select the CD Info tab.
3. If desired, select the Automatically get CD Info from the Internet checkbox.



4. Enter a valid e-mail address in the Email address field and click **Apply**. CDDB is configured.


Note: Users not wishing to sub an e-mail address can simply select the Anonymous checkbox.

Using CDDB

To access song information using CDDB:

1. Verify that the computer is connected to the Internet.
2. Place a CD in the CD drive and click the Play or Record Music CDs icon in the Explorer panel. If Siren is configured to automatically retrieve CDDB information, it is accessed and displayed. *For more information, see Configuring CDDB on page 24.*

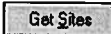
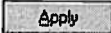
Track	Start	Length	Size
14 Maybe Partying Will Help	00:22:30.55	00:01:56.32	19.6 MB
15 Toadies	00:24:27.12	00:01:38.18	16.5 MB
16 Retreat	00:26:05.30	00:02:00.40	20.3 MB
17 The Big Foist	00:28:05.70	00:01:30.55	15.3 MB
18 God Bows To Math	00:29:36.60	00:01:16.30	12.9 MB
19 Corone	00:30:53.15	00:02:25.40	24.5 MB
20 The Glory Of Man	00:33:18.55	00:02:57.42	29.9 MB
21 Take 5, D.	00:36:16.22	00:01:39.63	16.8 MB
22 My Heart And The Real World	00:37:56.10	00:01:06.25	11.2 MB
23 History Lesson - Part II	00:39:02.35	00:02:12.10	22.2 MB
24 You Need The Glory	00:41:14.45	00:02:03.10	20.7 MB
25 The Roar Of The Masses Could Be Farts	00:43:17.55	00:01:21.02	13.6 MB
26 West Germany	00:44:38.57	00:01:49.13	18.4 MB
27 The Politics Of Time	00:46:27.70	00:01:12.47	12.2 MB
28 Themselves	00:47:40.42	00:01:18.20	13.2 MB
29 Please Don't Be Gentle With Me	00:48:58.62	00:00:47.68	8.1 MB
30 Nothing Indeed	00:49:46.55	00:01:22.22	13.8 MB
31 No Exchange	00:51:08.02	00:01:51.43	18.8 MB
32 There Ain't No No. T.V. Toadies	00:53:00.45	00:01:24.67	15.8 MB

If Siren is not configured to automatically retrieve CDDB information, click , or choose CD Info, followed by Get from the **File** menu.

Note: Once Siren retrieves information from CDDB, it is saved to a local database.

Problems with CDDB Connections


Occasionally, users may experience problems connecting to CDDB. When experiencing problems connecting to CDDB:

1. Choose Preferences from the **Options** menu. The Preferences dialog is displayed.
2. Select the CD Info tab.
3. Click . A list of available CDDB sites is displayed.
4. Select a site and click . Siren will connect to the new CDDB site when prompted.

Submitting CDDB Information

Given the number of CDs released each year, it is inevitable that users will eventually encounter a CD without CDDB information. When this happens, users can submit information to CDDB, which is added to the database and made available for future users.

To submit CD information to CDDB:

1. Insert a CD for which CDDB has no information and click the Play or Record Music CDs icon.
2. Manually enter the CD information. *For more information, see Adding CD Information Manually on page 27.*
3. Click , or choose CD Info, followed by Submit from the **File** menu. Siren attempts to connect to CDDB, and if successful, submits the user-provided information.

If CDDB submission is unsuccessful, the user will receive an e-mail notification. Anonymous users, however, will not receive notification of submission problems.

Adding/Editing Song Information

Typically, Siren retrieves song information from a CD or local database and displays the information in Siren's Explorer panel. When this information is unavailable, Siren displays generic song information. For example, when an audio CD containing no song information is inserted, or a CDDB connection cannot be made, Siren simply lists the tracks numerically.

Adding CD Information Manually

If Siren is unable to retrieve song information for a CD, information should be manually entered before the song is recorded to the computer. Siren copies this information while recording the audio.

To add CD information:

1. Place a CD in the CD drive. Siren alerts the user that CD information cannot be located and lists the songs numerically.
2. Enter the appropriate information in the Album, Artist, and Genre fields.
3. Select a song.
4. Right-click on the selected song and choose Rename from the shortcut menu. An edit field is displayed in place of the current song title.
5. Enter the new title and press **Enter**. Siren stores the information in a local database, and retrieves it whenever the CD is inserted. In addition, this information remains with the songs after they are recorded to the computer.
6. Repeat steps 3 through 5 until all desired songs are named.

Editing Song Information in Views and Playlists


To manually add or edit song information, do one of the following:

- Select the song and edit the artist, album, or genre information in the Song Info panel.

Artist: Tom Waits	Album: Mule Variations	Genre: Pop
-------------------	------------------------	------------

- Select the song and click the area below the category column to be edited. Siren enters edit mode. Enter the correct information followed by:
 - **Enter** to move one cell down
 - **Shift** + **Enter** to move one cell up
 - **Tab** to move one cell to the right
 - **Shift** + **Tab** to move one cell to the left

Name	Artist	Album	Genre
Biosphere	Trance International	http://www.stargrass.com	
Bizarre	U God	Golden Arms Redemption	Hip-Hop
Black Leather	All the Pretty Horses		
Bleeding	Simon V.	One Night	
Boom-Boom	Babaloo		
Boys Life	Fire Engine Red		
Braille	My Lai	Learn... Forget... Re-Learn	
Bring the Noise	anthrax and PE		metal/rap
Bryan Ferry - Slave To Love	Bryan Ferry		
Burn Baby, Burn	SKINNeR	SKINNeR	Rock
Burning Down The House	The Cardigans & Tom Jones		Other
Buzz Fledderjon	Tom Waits	Mule Variations	Pop
Callin The Shots	Planet Asia	Callin The Shots 12"	Hip-Hop
Camouflage Of Righteousness	Little Steven	Born Again Savage	Pop

- Select the song and choose Properties from the **File** menu. When the Properties dialog is displayed, select the Song Info tab. Edit the song information and click .

Properties - Unknown Artist-Disk [E0F9FD3A]-Track 06- M...

General Song Info

Name:

Artist:

Album:

Genre:

OK Cancel Apply


Note: When artist, album, or genre information is edited, the song is resorted in the Manage My Music Library views. If the artist, album, or genre information does not have an existing category, Siren creates a new view containing the song.

Auto Rename Files Command

Users are able to rename linked music files based on the information retrieved from the local music database. This feature changes a song's filename to include available song information, thereby making it more easily identifiable to users. When the Auto Rename Files feature is used, Siren uses the following renaming format: artist-album-track-title.extension.

Using Auto Rename Files

To use the Auto Rename Files feature:

1. Select a song in the Manage My Music Library view.
2. Choose Auto Rename Files from the **Edit** menu. The file is renamed according to Siren's renaming format.
3. Click  or press F5 to refresh the Manage My Music Library view.

Note: *The Auto Rename Files command can be used on several files simultaneously.*

MP3 Files and ID3 Tags

ID3 Tags allow additional information, musical and otherwise, to be saved as part of an .mp3 file.

Saving an ID3 Tag

To save an ID3 tag with an .mp3 file:

1. Add or edit song information as desired. *For more information, see Editing Song Information in Views and Playlists on page 27.*
2. From the **Edit** menu, choose Update ID3 Tags. The appropriate ID3 Tags are added or edited.

When the song's properties are viewed, the updated ID3 Tags are included in the Properties dialog.

Custom Playlists

Siren allows users to create custom playlists from the music library. Playlists enable users to store links to music located in a number of different views. Using this simple idea, users can create playlists for parties, work, reading, etc., and since playlists use links to songs rather than copies, a song can be included in multiple playlists without depleting hard drive space.

Creating a Playlist

To create a playlist:

1. From the Manage My Music Library view, click the New Playlist button, or choose New Playlist from the **Edit** menu. Siren creates a new playlist with a default name and displays it beneath the My Playlists icon.



2. Name the playlist and press **Enter**.

Note: Change a playlist name by right-clicking on it and choosing Rename from the shortcut menu.

3. Add songs to the playlist using any of the following methods:
 - Drag and drop songs from the music library to a playlist
 - Select a song and choose Add to Playlist from the **Edit** menu
 - Select a song and click Add to Playlist at the bottom of the Explorer panel

Note: When Add to Playlist is selected, Siren prompts the user to specify the playlist to which the song will be added.

An Alternate Method of Creating a Playlist

To create a playlist:

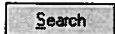
1. Select the song(s) to be added to the new playlist.
2. Choose **Add to Playlist** from the **Edit** menu, or click Add to Playlist at the bottom of the Explorer panel.
3. Name the playlist.

Adding a Playlist

Once placed in a playlist, songs can be arranged using drag and drop.


Importing Playlists

To import a playlist:

1. Choose **Search Computer for Music** from the **Options** menu. The Search Computer for Music dialog is displayed.
2. Select the Known Playlists checkbox and click . Siren searches the computer for previously created playlists (.m3u or .pls) and adds them to the music library.

Exporting Playlists

To export a playlist:

1. Click the Manage My Music Library icon, or choose **Manage My Music Library** from the **View** menu.
2. Select a playlist for export.
3. Right-click the mouse and choose **Export Playlist** from the menu. The Export Playlist dialog is displayed.
4. Specify a location and name for the .m3u file and click .

Locking Views and Playlists

Once a view or playlist is created and configured to the user's satisfaction, it can be locked to prevent accidental deletion. To lock a view or play, right-click on it in the Explorer panel and select **Locked** from the shortcut menu. A checkmark is displayed adjacent to the **Locked** command and subsequent right-clicking on the locked view or playlist displays an unavailable **Delete** option. To unlock a view or playlist, thereby allowing it to be deleted, right-click on it and reselect **Locked** from the shortcut menu.

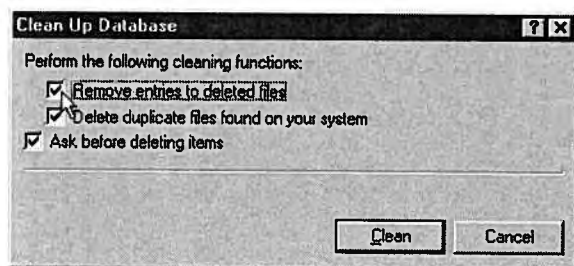
Note: A locked view or playlist can be renamed.


Clean Database

Siren's Clean Database command, as one might expect, allows users to clear their music database of deleted and duplicate file entries.

To clean the database:

1. Choose Clean Database from the **Edit** menu. The Clean Up Database dialog is displayed.



2. Select the checkbox(es) corresponding to the desired option(s) and click .

Clean Database Functions

Remove Entries to Deleted Files

Siren searches the music database for files that have been deleted from the computer and removes their database entries.

Delete Duplicate Files Found On Your System

Siren searches the music database for duplicate files and deletes them, retaining a single database entry for each file.

Ask Before Deleting Items

Sirens prompts the user prior to deleting files or database entries.

Advanced Music Management


Siren features a number of database tools designed to allow users gain superior control over their music libraries and listening habits. These include the Field Chooser, Sort Bar, Group Bar, and Filter Bar.

Field Chooser



The Field Chooser allows users to determine the database categories used to display, sort, group, and filter their music libraries.

Displaying the Field Chooser

To display the Field Chooser, click  in the database toolbar, or right-click in the head row and choose Field Chooser from the shortcut menu.

Explorer Panel Fields

All fields listed in the Field Chooser can be displayed in the Explorer panel. By default, Siren displays only the name, artist, album, and genre information for a song.

Adding Fields to the Explorer Panel

To demonstrate adding fields to the Explorer panel:

1. Display any view or playlist.
2. Display the Field Chooser.
3. Click and hold the left mouse button on the desired field in the Field Chooser.
4. Drag the field from the Field Chooser and drop it into the Explorer panel's head row. When the field is properly positioned, two small, red arrows appear above and below the head row.



After the field is dropped, a new field column is added to the head row and all songs in the list display a value, if applicable.

Removing Fields from the Explorer Panel

To remove a field from the Explorer panel, right-click on the field to be removed, and choose Remove This Column from the shortcut menu.

Note: *The fields displayed in the Explorer panel have no effect on sorts, groupings, or filters applied to the music library.*

Editable and Non-Editable Fields

Select fields are populated with information retrieved directly from the music file, the CD, or a local database, and this information may be permanent, or subject to editing. Other fields rely on user input for their information. *For more information, see Editing Song Information in Views and Playlists on page 27.*


The following table lists all available fields, and identifies each as either editable, or non-editable.

Field	Status
Added	Non-editable
Album	Editable
Artist	Editable
Bitrate	Non-editable
Comment	Editable
File Path	Non-editable
File Size	Non-editable
File Type	Non-editable
Genre	Editable
Icon	Non-editable
Last Played	Non-editable
Length	Non-editable
Name	Editable
Play Command	Non-editable
Played	Non-editable
Track	Editable
Volume Name	Editable
Year	Editable

Sort Bar

The Sort Bar, which can be used from any Manage My Music Library view, allows all songs in the music library to be listed, or sorted, by field(s). This feature is useful for ordering and displaying the music library alphabetically (by artist, album, or song name), chronologically, by date added, number of times played, or by any other available field.

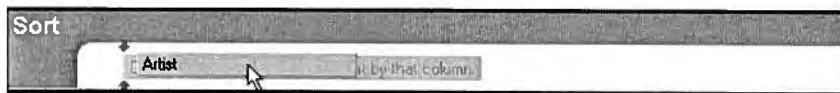
Displaying the Sort Bar

To display the Sort Bar, click  in the database toolbar, or right-click in the database toolbar and choose Show Sort Bar from the shortcut menu.

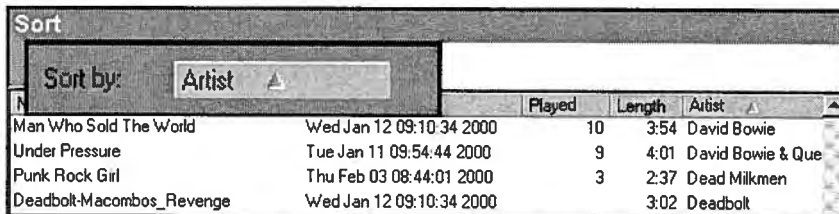
Creating a Sort

To demonstrate creating a sort:

1. Display the All Music view and the Sort Bar.
2. Drag a field (Artist in the case of this demonstration) from the Field Chooser or head row and drop it in the Sort Bar. When the field is properly positioned, two small, red arrows appear in the Sort Bar.

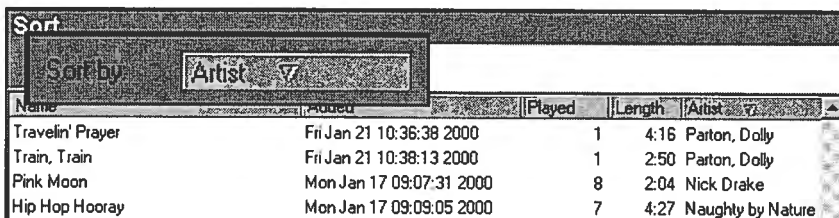


The field is added to the Sort Bar with a small, up-pointing arrow, and all music library artists are listed from A to Z.



		Played	Length	Artist
Man Who Sold The World	Wed Jan 12 09:10:34 2000	10	3:54	David Bowie
Under Pressure	Tue Jan 11 09:54:44 2000	9	4:01	David Bowie & Que
Punk Rock Girl	Thu Feb 03 08:44:01 2000	3	2:37	Dead Milkmen
Deadbolt-Macombos_Revenge	Wed Jan 12 09:10:34 2000		3:02	Deadbolt

3. Click the Artist field button in the Sort Bar. The arrow turns down and the sort reverses directions; listing all library artists from Z to A.



		Played	Length	Artist
Travelin' Prayer	Fri Jan 21 10:36:38 2000	1	4:16	Parton, Dolly
Train, Train	Fri Jan 21 10:38:13 2000	1	2:50	Parton, Dolly
Pink Moon	Mon Jan 17 09:07:31 2000	8	2:04	Nick Drake
Hip Hop Hooray	Mon Jan 17 09:09:05 2000	7	4:27	Naughty by Nature

Note: Clicking a field bar in the head row automatically adds it to the Sort Bar.

Multiple Field Sorts

Sorts may be comprised of several fields. Using the previous procedure, users can add additional sort fields. Continuing with the previous example, adding the Name field to the Sort Bar will list each artist's songs alphabetically with the initial sort.

Fields in the Sort Bar can be arranged by dragging and dropping, with the left-most field being the primary sort.


Removing Fields from a Sort

To remove a field from the Sort Bar, right-click on the field and choose Remove This Sort from the shortcut menu.

To remove all fields from the Sort Bar, right-click on a field and choose Remove All Sorts from the shortcut menu.

Saving a Sort


To save a sort as a new view:

1. Click  in the database toolbar, or right-click in the database toolbar and choose Make New View from the shortcut menu. A new view with a default name is created.
2. Enter a name for the new view and press **Enter**.

Group Bar

The Group Bar, which can be used in any Manage My Music Library view, groups all songs in the music library by field(s). This feature is useful for creating simple or complex groups of songs. For example, grouping by genre allows the user to quickly identify all free jazz songs in the music library. A multi-level grouping will allow users to easily identify song groupings as elaborate as all 1997 death-metal .mp3 files with 128kbs bitrates added to the music library on January 11, 2000.

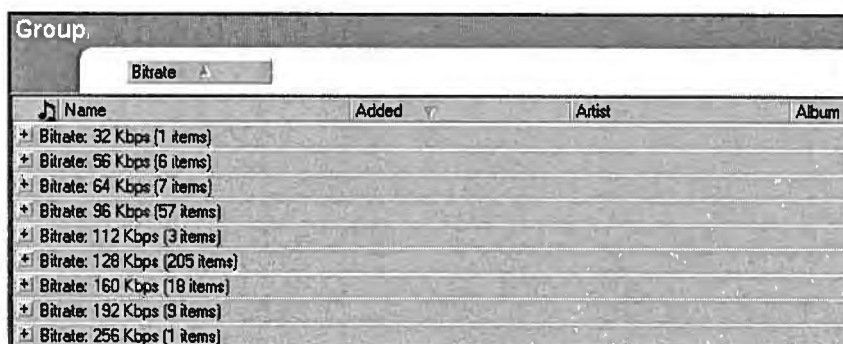
Displaying the Group Bar

To display the Group Bar, click  in the database toolbar, or right-click in the database toolbar and choose Show Group Bar from the shortcut menu.

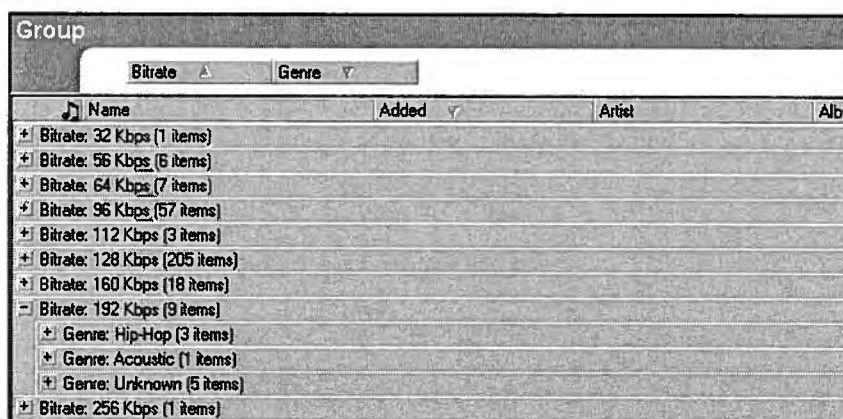
Creating a Grouping

To demonstrate creating a group:

1. Display the All Music view and the Group Bar.
2. Drag the Bitrate field from the Field Chooser or head row and drop it into the Group Bar. All songs in the music library are grouped and displayed by bitrate.



3. Drag the Genre field from the Field Chooser or head row and drop it in the Group Bar. All songs are sorted by bitrate, and sub-sorted by genre.




Using this procedure, users can add additional fields. Fields in the Group Bar can be arranged by dragging and dropping, with the left-most field being the primary grouping.

Removing Fields from a Grouping

To remove a field from the Group Bar, right-click on the field and choose Remove This Grouping from the shortcut menu.

To remove all fields from the Group Bar, right-click on a field and choose Remove All Groupings from the shortcut menu.


Saving a Grouping

To save a grouping as a new view, click  in the database toolbar, or right-click in the database toolbar and choose Make New View from the shortcut menu. A new view, with a name based on the grouping field order, is created and displayed.

Filter Bar

The Filter Bar, which can be used in any Manage My Music Library view, allows users to select, or filter, songs fitting user-specified criteria. Whereas the Group Bar allows users to group songs by field, the Filter Bar is more flexible, enabling users to apply comparative values or ranges to determine which song meet their criteria, regardless of how specific. For example, all songs between four and five minutes in length. Using Siren's filter capabilities, users can quickly isolate all library songs recorded between 1970 and 1980 that are longer than ten minutes, have the word *booty* in the title, and have been played more than 25 times, but haven't been played since January 1, 2000.

Displaying the Filter Bar


To display the Filter Bar, click  in the database toolbar, or right-click in the database toolbar and choose Show Filter Bar from the shortcut menu.

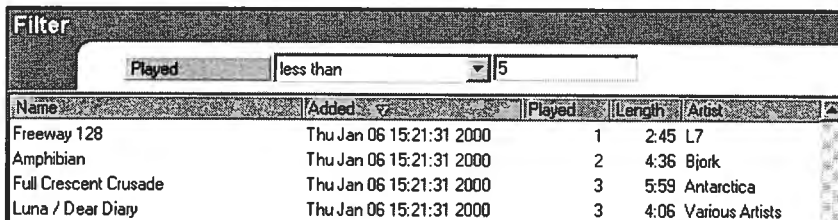
Creating a Filter

To demonstrate creating a filter:

1. Display the All Music view and the Filter Bar.
2. Drag the Played field from the Field Chooser or head row and drop it in the Filter Bar. The Played field is added to the Filter Bar with a corresponding drop-down list and edit field.




3. Specify less than in the drop-down list.
4. Enter 5 in the edit field.
5. Press **Enter**, click  in the database toolbar, or right-click in the Filter Bar and choose Apply Filter from the shortcut menu. The filter is applied and only songs from the music library that have been played 5 times or less are listed.



Name	Added	Played	Length	Artist
Freeway 128	Thu Jan 06 15:21:31 2000	1	2:45	L7
Amphibian	Thu Jan 06 15:21:31 2000	2	4:36	Bjork
Full Crescent Crusade	Thu Jan 06 15:21:31 2000	3	5:59	Antarctica
Luna / Dear Diary	Thu Jan 06 15:21:31 2000	3	4:06	Various Artists

Adding a Second Filter

To add a second filter:

1. Drag the Bitrate field from the Field Chooser or header row and drop it in the Filter Bar. The Bitrate field is added under the Played filter with a corresponding drop-down list and edit field.
2. Specify equals from the drop-down list.
3. Enter 128 kbs in the edit field.
4. Press **Enter**, click  in the database toolbar, or right-click in the Filter Bar and choose Apply Filter from the shortcut menu. The second filter is applied and only songs from the music library that have been played less than 5 times or less, *and* have bitrates of 128kbs are listed.

Filter				
Played	less than	5		
Bitrate	equals	128 kbs		
Name	Added	Played	Bitrate	Length
Lawyers, Guns and Money	Wed Jan 12 09:10:34 2000	5	128 Kbps	
Rollins Band - Four Sticks	Wed Jan 12 09:10:34 2000		128 Kbps	
David Bowie - China Girl	Wed Jan 12 09:10:34 2000	1	128 Kbps	
The End Of Life In America, An	Wed Jan 12 09:10:34 2000	5	128 Kbps	

Note: Fields in the Filter Bar cannot be re-arranged.

Added and Last Played Field Values

Siren allows all views and playlists to be filtered using two different date fields, Added and Last Played. Since there are countless ways to create a date value, Siren's database features have been designed with maximum flexibility. What follows is a partial list of valid date values:

yesterday	today	tomorrow
last week	next week	x days ago
x weeks ago	x months ago	x years ago
x hours ago	month last year	month x years ago
day last week	day x weeks ago	month date
month date year	month (abbr.) date year	

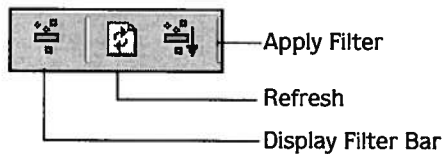
Removing Fields from a Filter

To remove a field from the Filter Bar, right-click on the field and choose Remove This Filter from the shortcut menu.

To remove all fields from the Filter Bar, right-click on a field and choose Remove All Filters from the shortcut menu.


Refreshing a View

After a filter is removed, the view can be updated, or refreshed, by clicking the Refresh button, located between the Show Filter Bar and Apply Filter buttons.



Saving a Filter

To save a filter as a new playlist:

1. Click  in the database toolbar, or right-click in the database toolbar and choose Make New View from the shortcut menu. A new playlist, with a default name, is created and displayed in the Manage My Music Library view.
2. Enter a name for the new playlist and press **Enter**.

Combining Sorts, Groups, and Filters

As described previously, sorts, groups, and filters can be used independently of each other. However, Siren's music organization power can be further exploited by using these functions in conjunction with each other. For example, users can quickly configure Siren to group songs by bitrate and genre, sort by length and file type, and filter by date added and number of times played. Combining these features allows users to find the perfect song for any situation.

Note: When database features are combined, they are always applied in Group-Sort-Filter order.



Playing and Recording Music

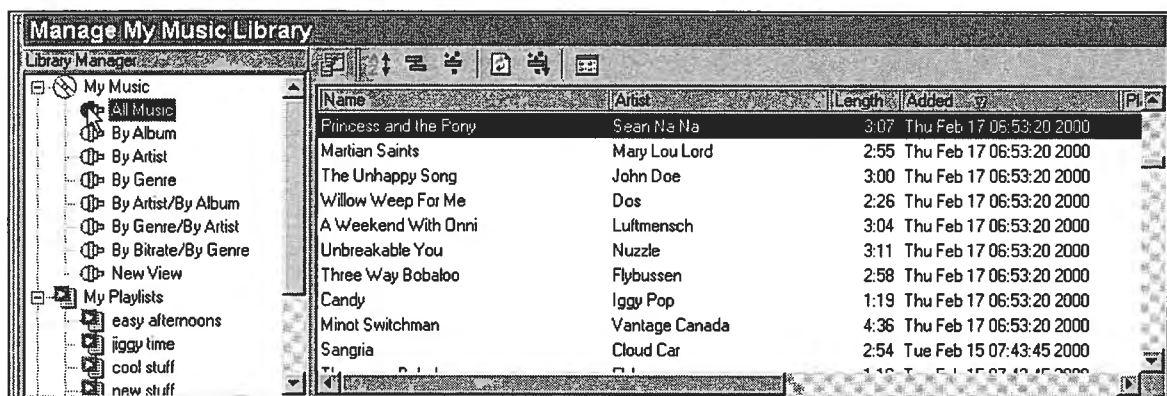
Playing Music Files with SIREN Jukebox

Once music is added to the music library, it can be played-back from any My Music view or custom playlist. In addition, Siren will play most .wav, .mp3, and .wma files from the computer or a network drive.

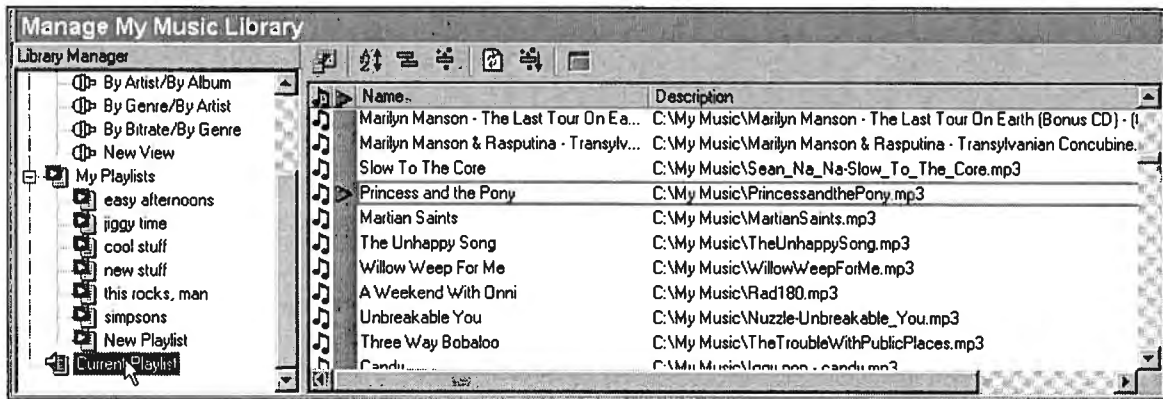
The Current Playlist

Regardless of whether it is playing from a CD, a music view, a custom playlist, or a network location, Siren always performs playback using the songs and sequence displayed in the Current Playlist. Siren generates a Current Playlist each time the user selects a song for playback from any of Siren's available sources. To view a Current Playlist:

1. Click the Manage My Music Library icon in the Navigator panel.
2. Select the All Music icon.
3. Select any song in the All Music view and initiate playback.



4. Select the Current Playlist icon, which is located at the bottom on the Explorer tree.



Notice that the current song is highlighted, and the preceding and following songs are indicated. *For more information, see Play in Order versus Play Randomized on page 43.*

Instant Current Playlists

Siren generates a Current Playlist whenever the user specifies a folder, CD, view, or even a single song for playback.

Folders and CDs

When a network folder, computer folder, or CD is selected for playback, its contents automatically become the Current Playlist. The playback sequence can be as originally arranged, or randomized. *For more information, see Play in Order versus Play Randomized on page 43.*



Music Library

Current Playlists generated from the music library are more involved than those generated from folders and CDs. The following table describes Siren's Current Playlist generation based on user action and the source of the music files. Again, the playback sequence can be as originally arranged in the music library view, or randomized. *For more information, see Play in Order versus Play Randomized on page 43.*

User Action	Resulting Current Playlist
Select a view from the Explorer panel tree	Entire content of view is placed in Current Playlist. Playback begins with the first song in the view.
Select a single song	Entire content of view is placed in Current Playlist. Playback begins with the selected song.
Select a group of songs	Only selected songs are placed in Current Playlist. Playback begins with the first song selected.
Select song from multi-category view	Only songs located in selected branch are placed in Current Playlist. Playback begins with selected song.



Play in Order versus Play Randomized

When playing music from any source, users can specify whether the Current Playlist is generated using the original order, or with a random order, by clicking the playback toggle button in the Transport panel.

- When  is displayed, songs are played-back in the listed order
- When  is displayed, song are played-back in a random order

Play Once versus Continuous Play

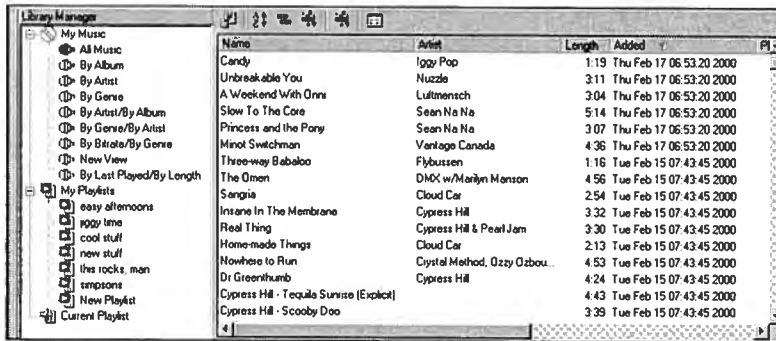
Like the previous feature, users are able to specify whether Current Playlist playback occurs once, or is looped infinitely by clicking the appropriate toggle button in the Transport panel.

- When  is displayed, playback is halted once the CD or playlist is complete
- When  is displayed, playback continues infinitely (looped)

Playing Music from a My Music View

To play music from a Manage My Music Library view:

1. Display the contents of the music library by clicking on the Manage My Music Library icon in the Navigator panel, or by choosing **Manage My Music Library** from the **View** menu.
2. Click the All Music view. Siren lists all songs in the music library.

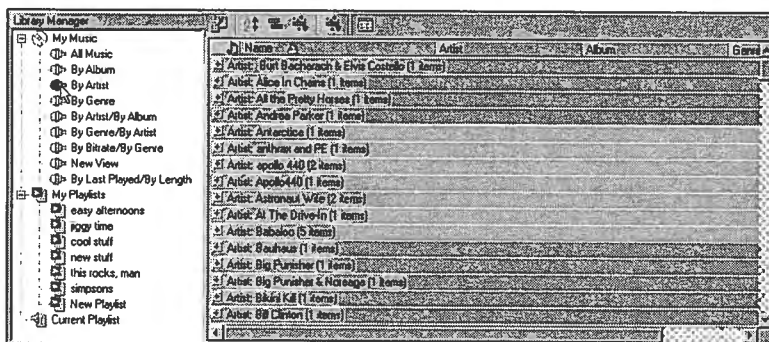


3. Click ► on the Transport panel. Siren generates a Current Playlist, begins playing the first song, and continues through the entire view. To begin playback with an alternate track, double-click the track, or highlight it and click ►.

Playing Music from Other Views

To playback music from another of Siren's views:

1. Display the contents of the music library by clicking on the Manage My Music Library icon in the Navigator panel, or by choosing **Manage My Music Library** from the **View** menu.
2. Select the desired view. All music from the view is sorted and displayed in appropriate branches.



3. Click the desired branch. Siren displays all songs in the branch.

Note: Depending upon the complexity of the view, it may be necessary to click through several layers of branches before locating song

listings.

4. Select a song and click ► on the Transport panel, or double-click it to begin playback. Siren generates a Current Playlist and plays only the songs located in the specified branch.

Playing Music from a Custom Playlist

As discussed previously, Siren will instantly generate a Current Playlist to allow users to immediately begin listening to music from the music library, a CD, or a network folder/drive. In addition, Siren also allows users to create custom playlists to satisfy individual tastes or requirements. To playback music from a playlist:

1. Display the music library by clicking the Manage My Music Library icon in the Navigator panel or by choosing **Manage My Music Library** from the **View** menu.
2. Double-click the My Playlists icon in the Library Manager to display all playlists.
3. Select the desired playlist. The playlist's songs are listed.
4. Click ► on the Transport panel. Siren begins playing the first song in the list and continues through the playlist. To begin playback with an alternate track, double-click the track, or select it and click ►.

For more information, see Custom Playlists on page 29.

Using the Play Command Field

The Play Command field allows users to initiate playback from a view or playlist with a single mouse click. To use the Play Command field:

1. Display any view or playlist.
2. Display the Field Chooser. *For more information, see Field Chooser on page 33.*
3. Drag the Play Command field from the Field Chooser, and drop it into the Explorer panel's head row. A Play Command column (►) is added to the Explorer panel.
4. Left-click in the Play Command column. Playback begins with the adjacent song and continues through the view or playlist.

Note: *The Play Command field is displayed by default in the Current Playlist.*

Playing Music from the Computer or a Drive Location

While music is typically played from the music library or a CD, Siren can also play music from a folder on the computer, or from a network drive. In addition, links to these files can be created in the Manage My Music Library view for easy accessibility.

Note: Secured .wma files cannot be played from a network drive. However, .wav and .mp3 files can be played or copied from a network location.

To play music from the computer or a network drive:

1. Click the Explore My Files icon in the Navigator panel to view all drives and folders in the Explorer panel.
2. Navigate to the file containing the music to be played.
3. Click ►. Siren creates a Current Playlist and begins playback with the first song in the list. To begin playback with a different track, double-click the track, or highlight it and click ►.

Adding Music From the Computer or Network to My Music

To add files to the Manage My Music Library view from folders on the computer or a network drive, do one of the following:

- Choose Search Computer for Music from the **Options** menu.
- Click the Explore My Files icon, right-click on the desired folder, and choose Search for Music from the shortcut menu.

If music located on a network drive is linked to a Manage My Music Library view, it is available only when the computer is connected to that drive.

Identifying Network Music

As stated previously, music located on a network drive is only available when the computer is connected to the network. Attempting to play music from a network when the computer is disconnected produces an error message. To avoid error messages when the computer is disconnected from the network, simply apply a filter using the File Path field, and specify only songs located at the system's hard drive address (typically C:). For more information, see Filter Bar on page 38.

Playing CDs



Siren will play audio CDs from the computer's CD-ROM drive. Use Siren's Transport panel or the **Transport** menu to control CD playback.

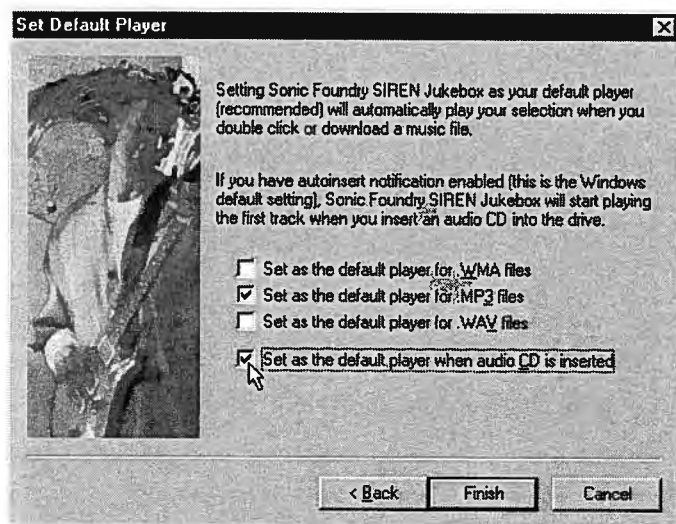
CD Autoplay

If Siren and the system are configured to play CDs automatically, Siren initiates CD playback when a CD is inserted.

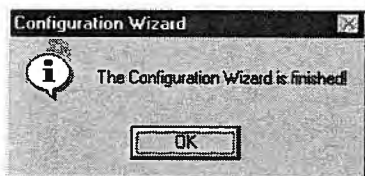
Configuring Siren Autoplay

To configure Siren's CD Autoplay feature:

1. Choose Configuration Wizard from the **Options** menu. The Welcome to the Configuration Wizard dialog is displayed.
2. Click  until the Set Default Player dialog is displayed.
3. Select the Set as the default player when audio CD is inserted checkbox and click .



The user is alerted that the configuration is complete.







4. Click . Siren's Autoplay feature is configured.

Note: *If Siren still does not automatically play CDs, and the system is running Windows 9x, the system's Autoplay feature must be configured.*

Configuring System Autoplay (Windows 9x only)

To configure the system to automatically play CDs:



1. Choose **Settings**, then **Control Panel** from the  **Start** menu.
2. Double-click the **System** icon.
3. Select the **Device Manager** tab.
4. Click the appropriate  to display the system's CD-ROM drive(s).
5. Select the desired CD-ROM drive and click .
6. Select the **Settings** tab.
7. Select the **Auto insert notification** checkbox and click . The system's Autoplay feature is configured.

Playing CDs Without Autoplay

If the system is not configured to play CDs automatically, or to play a CD currently in the CD-ROM drive:

1. Click the **Play or Record Music CDs** icon in Siren's Navigator panel. The Explorer panel displays the available tracks and Siren attempts to retrieve and display CD information from local databases, or from the CD itself.

If this information is not available, the songs are listed numerically. Users may attempt to retrieve CD information from the Internet using CDDb. *For more information, see Compact Disc Database on page 24.*

2. Click  on the Transport panel. Siren makes the CDs content the Current Playlist, and plays the entire CD, starting with the first track. To begin playback with an alternate track, double-click the track, or highlight it and click .

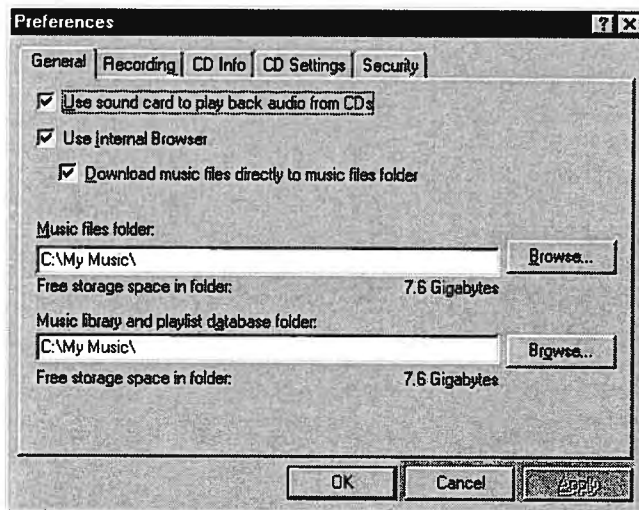
Recording from CD


Siren is able to record songs from a CD, place the files in a user-specified location, and create links to those files in the Manage My Music Library view. In addition, users can listen to music from the music library while recording CDs to the computer. However, it is not possible to listen to a CD while recording it to the computer. In addition, while tracks can be recorded from a previously created custom CD, these tracks cannot be written to another CD.

Selecting the Music Files View

As mentioned previously, users must specify the system folder for music storage. To specify the music files folder:

1. From the **Options** menu, choose Preferences. The Preferences dialog is displayed.
2. Select the General tab.

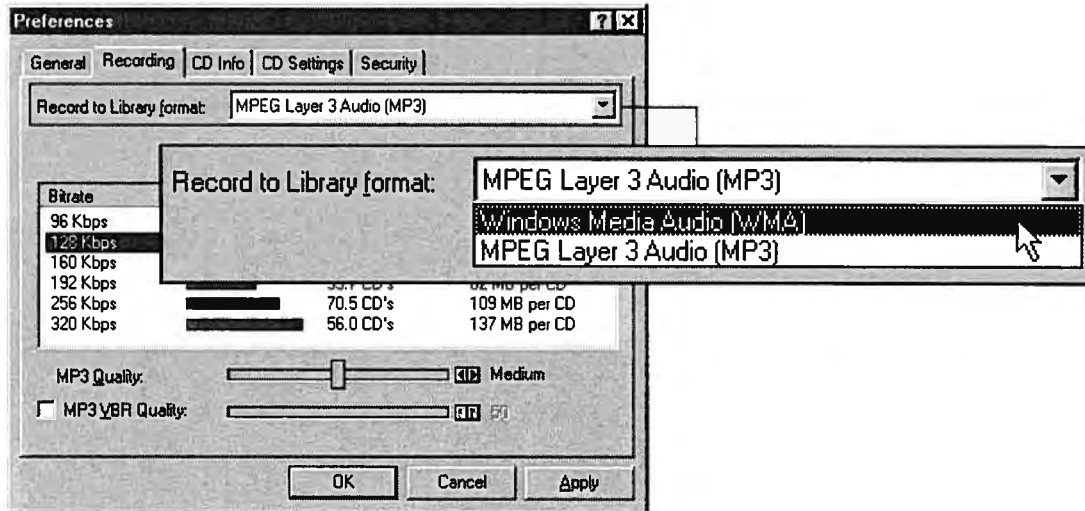


3. Enter the path to the folder in the Music files folder field and click . The folder location is updated.

Specifying the Record Format

Users are able to record tracks to the computer in .mp3 or .wma format. To specify the record format:

1. Choose Preferences from the **Options** menu. The Preferences dialog is displayed.
2. Select the Recording tab.
3. Specify the record format from the Record to Library format drop-down list.

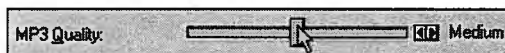


Siren displays the available recording bitrates.

4. Select the recording bitrate. *For more information, see Recording Bitrates on page 50.*

Bitrate	Quality Level	Limit	Diskspace
96 Kbps		187.4 CD's	41 MB per CD
128 Kbps		142.3 CD's	54 MB per CD
160 Kbps		113.0 CD's	68 MB per CD
192 Kbps		93.7 CD's	82 MB per CD
256 Kbps		70.5 CD's	109 MB per CD
320 Kbps		56.0 CD's	137 MB per CD

5. If encoding to .mp3, use the MP3 Quality slider to select the recording quality.
 - Setting to Fastest Encode (far left) records files as quickly as possible.
 - Setting to Highest Quality (far right) records files with the highest possible audio quality.



6. If desired, select the MP3VBR Quality checkbox and use the corresponding slider to set the encoding sensitivity value. *For more information, see MP3VBR Quality on page 51.*
7. Click . The configuration is saved.



Recording Bitrates

Available recording bitrates vary based on the recording format. The Windows Media Audio (.wma) format offers 64, 96, 128, and 160kbps. Conversely, selecting the MPEG Layer 3 Audio (.mp3) format allows the user to specify from the following bitrates: 96, 128, 160, 192, 256 or 320kbps.

Siren XPress users are limited to 64 and 96kbps bitrate in the .wma format, and twenty .mp3 encodes.

MP3VBR Quality

Variable bitrate (VBR) is an encoding method available only when recording to .mp3. The bitrate is automatically adjusted during recording, resulting in higher quality audio and smaller file sizes.

Recording from CD to the Computer

To record music from CD to the computer:

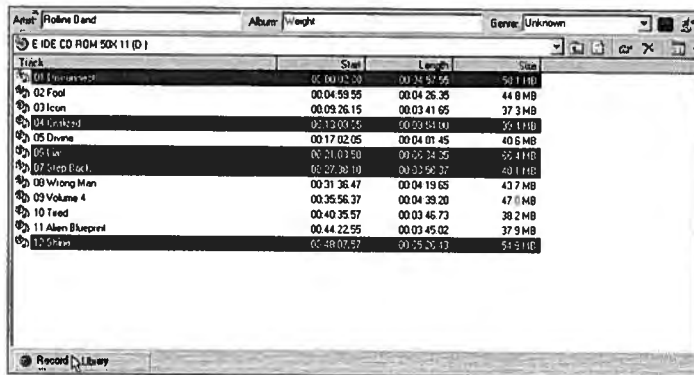
1. Place an audio CD in the system's CD-ROM drive.
2. Click the Play or Record Music CDs icon in the Navigator panel. The CD's tracks and database information are displayed.

Note: *If the system has multiple CD drives, users must specify the appropriate drive to display the track listing and database information.*

3. If the track information is not displayed, access CDDB or add this information manually. For more information, see *CD Information* on page 23.

Note: *If track information is not displayed or added, Siren records all songs as unknown and numbers them sequentially.*

4. Select the track(s) to be recorded and click Record to Library from the Explorer menu command bar, or choose Record to Library from the **File** menu.

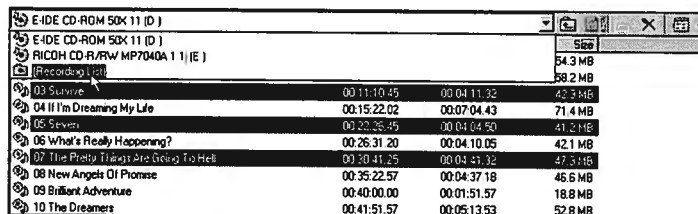


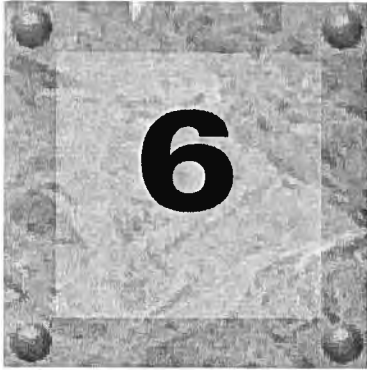
Siren records the song(s) to the music files folder and a progress meter is displayed in the Status panel. To halt recording, click Cancel.



Monitoring the Recording Process

To monitor the recording progress, specify Recording List from the Explorer toolbar drop-down list.





Custom CDs

Creating CDs




Once music is in the music library, users can create custom CDs using a supported CD writer. Custom CDs can be constructed using personal CD tracks along with .wav, .mp3, and .wma files recorded or downloaded from the Internet.

Note: .Wma files may only be written to a custom CD if the file includes a flag permitting the file to be written to CD.

In accordance with copyright law, users may create a personal copy of copyrighted material. This allows users to record music from personal CDs to the computer, and use that music to create a custom CD of that music. However, users may not copy a custom CD or record its music to another computer.

Configuring SIREN Jukebox to Write Custom CDs

To configure Siren to write custom CDs:

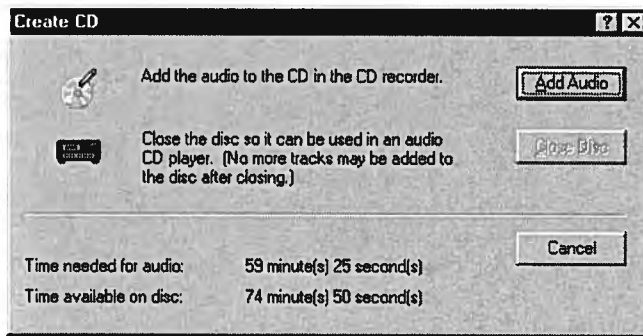
1. Choose **Preferences** from the **Options** menu. The Preferences dialog is displayed.
2. Select the CD Settings tab.
3. Specify the connected CD-R drive from the Write to CD drive drop-down list.
4. Set an appropriate Write to CD speed for the drive and click .

Creating Custom CDs

To create a custom CD:

1. Verify that Siren is properly configured to create CDs. For more information, see *Configuring SIREN Jukebox to Write Custom CDs on page 53*.

2. Verify that the supported CD writer (CD-R or CD-RW) is connected to the computer.
3. In the Explorer panel, select the song(s) to be written to the CD.
4. Click Write to CD in the Explorer panel's command bar or choose Write to CD from the **File** menu. The Create CD dialog is displayed.

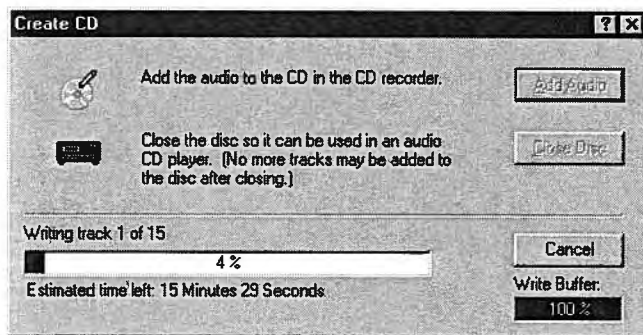


The Create CD dialog contains two very important values.


- The Time needed for audio value indicates the total time of the selected song(s).
- The Time available on disc value indicates the space remaining on the CD.

Note: The user will be alerted if the selected song(s) require more space than the amount remaining on the CD.

5. Click **Add Audio**. Siren begins writing the selected music to the CD and the Create CD dialog displays the progress and time remaining.



Note: Sonic Foundry recommends allowing Siren to complete this operation. Clicking Cancel, may render the CD unusable.

-
6. When Siren finishes adding the selected song(s), it displays a message declaring that the operation was successful. Click .


If any error messages are displayed during CD writing, refer to Siren's online help.

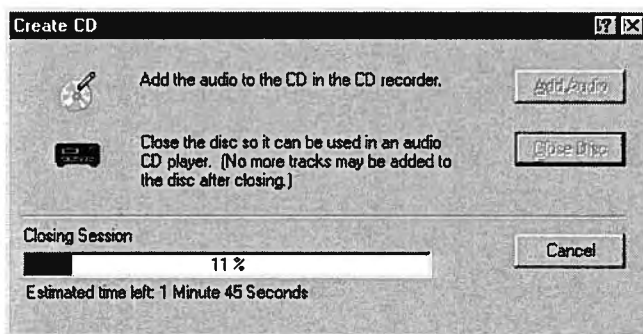
Use this method to write additional songs to the CD. The CD can be removed from the drive and inserted in the future to continue adding songs, because the CD remains at the current position and each song appends to it. When the custom CD is complete or full, it must be closed. *For more information, see Closing the CD Session on page 56.*

Closing the CD Session

Once all desired songs are written to a custom CD, the CD session must be closed. Closing a CD allows it to be played in consumer CD players. Once a CD is closed, new songs can no longer be added.

To close a CD session:

1. If it is not currently displayed, open the Create CD dialog by choosing **Close CD Session** from the **File** menu.
2. Click . Siren begins closing the CD and the Create CD dialog displays the progress and time remaining.



3. When Siren completes the closing process, it displays a message declaring that the operation was successful. Click .

If any error messages are displayed during CD writing, refer to Siren's online help.



Downloading Music to a Portable Player

Sending Music to a Portable Player

Siren is able to download .mp3 files to a portable player, as well as manage files once they are placed in the player's memory. However, Siren's portable player features are available only for Windows 95 and 98 operating systems.

Siren downloads music to portable players in one of two ways:

- Songs are selected from the Explorer panel, and downloaded using the **Send to Portable Player** command. *For more information, see [Selecting Songs from the Explorer Window](#) on page 57.*
- Songs are selected and downloaded while managing the player. *For more information, see [Downloading Music while Managing the Portable Player](#) on page 59.*

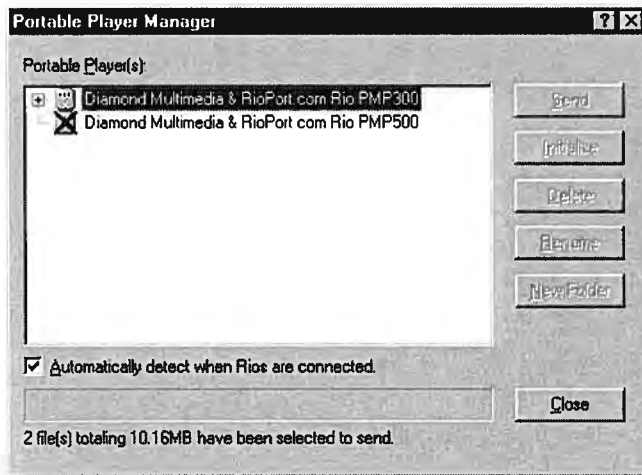
Note: *Windows and dialogs pictured in this chapter are examples only. Screens and options vary based on the player.*

Selecting Songs from the Explorer Window

To select songs for download from the Explorer panel:

1. Verify that the portable player is properly connected to the computer as described in the player's documentation.
2. In the Explorer panel, select the .mp3 file(s) to be downloaded to the portable player.

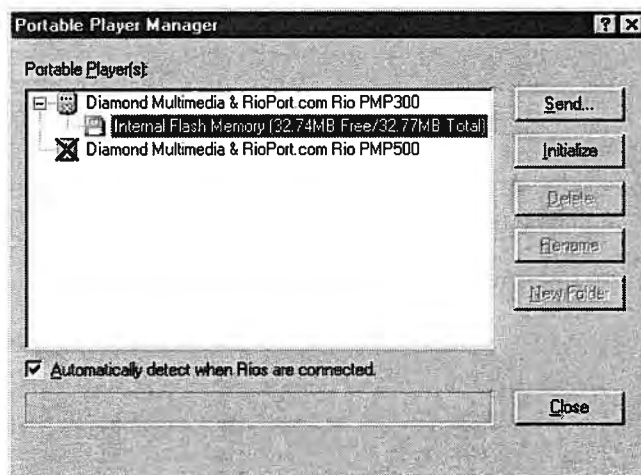
- Click Send to Portable Player in the Explorer panel's command bar, or choose Send to Portable Player from the **File** menu. The Portable Player Manager dialog is displayed.

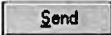


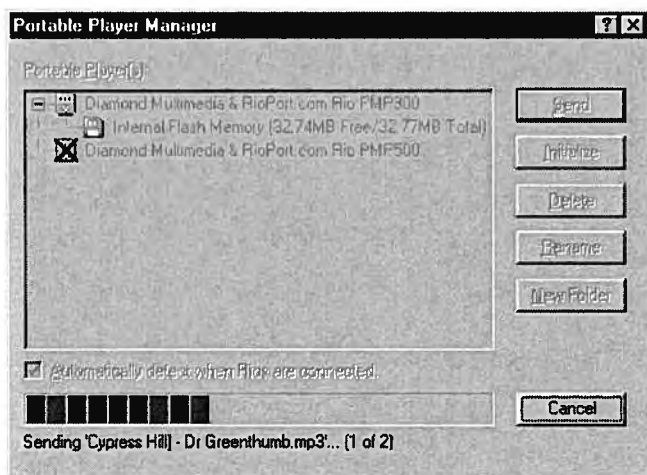
All connected portable players are displayed in the Portable Player Manager dialog, however, if the player is turned off, its icon is inactive (crossed-out).

Note: If the player has a battery save feature, and is idle for an extended period of time, it may display as inactive even if properly connected and previously on.

- Click appropriate to the desired portable player. The content of the player's internal memory, and any removable memory cards, is displayed.




5. Select the memory, or folder, to which the selected music will be added. For more information, see *Folders* on page 59.
6. Click . The Portable Player Manager dialog displays the download progress of each song.



Note: Sonic Foundry recommends allowing Siren to complete this operation. Clicking Cancel may leave the portable player in an unknown state.

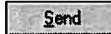
Once all selected songs are downloaded, the Portable Player Manager dialog closes and Siren's main screen is displayed. To manage songs in the player's memory, choose **Manage Portable Player** from the **File** menu. For more information, see *Managing the Portable Player* on page 61.

Folders

Select portable player models support folders. If the connected player supports this feature, the  button is active in the Portable Player Manager dialog. For more information about folders, refer to online help.

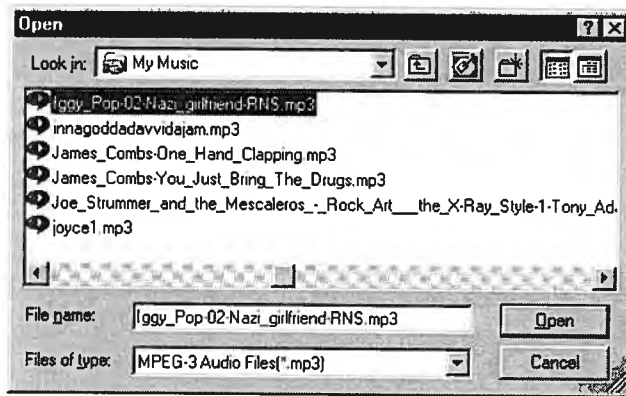
Downloading Music while Managing the Portable Player

To download music while managing the portable player:

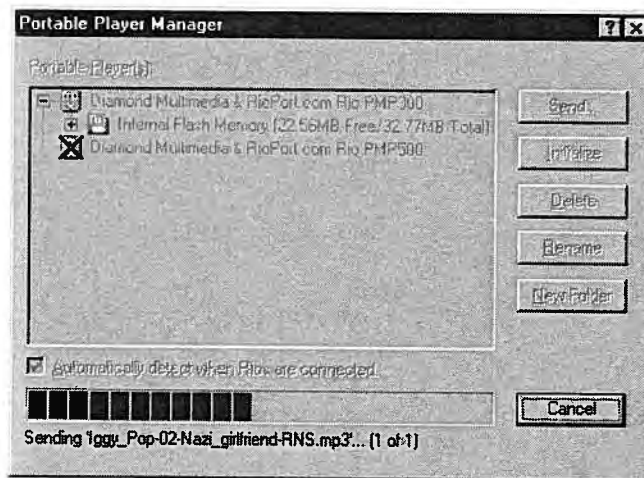
1. Choose **Manage Portable Player** from the **File** menu. The Portable Player Manager dialog is displayed.
2. Click . The Open dialog is displayed.

3. Select the system folder containing the song(s) to be downloaded.
4. Select the song(s) to download.

Note: To select multiple songs, use **Ctrl**-click.



5. Click **Open**. The Portable Player Manager dialog displays the download progress of each song.



Note: Sonic Foundry recommends allowing Siren to complete this operation. Clicking Cancel may leave the portable player in an unknown state.

After Siren downloads all selected songs, the Portable Player Manager dialog displays a list of songs in the player.

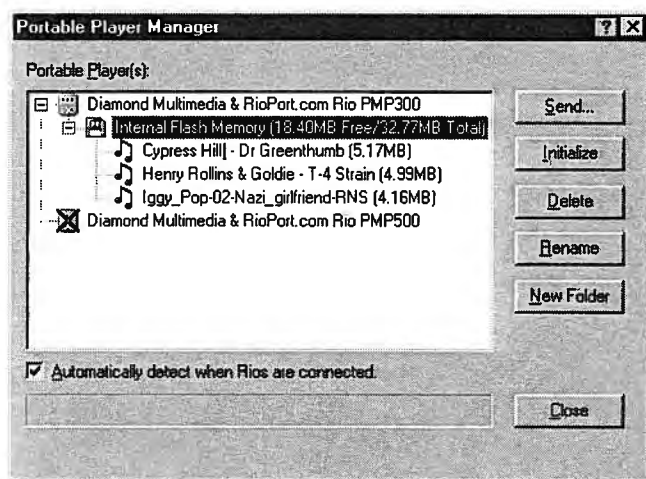


Managing the Portable Player

In addition to downloading .mp3 files to portable players, Siren can also manage files. However, management options vary based on the make and model of the player.

To manage music in a portable player:

1. Verify that the portable player is properly connected to the computer, as described in the player's documentation.
2. Choose **Manage Portable Player** from the **File** menu. The Portable Player Manager dialog is displayed, listing songs in the player's memory.



From this dialog, users are able to download .mp3 files to the portable player, as well as manage the .mp3 files stored in the player's memory. Management options vary based on the make and model of the portable player.

Note: *For more information on portable player management features, refer to Siren's online help.*

Index

A

Adding song information, 26

C

CD Information, 23, 24

CDs, 41

 Creating, 53

 Playing, 48

 Recording, 49

Clean database, 32

Compact Disc Database (CDDb), 24, 48

Compact mode, 14

Configuration Wizard, 9, 10

Copyright information, 53

Creating custom CDs, 53

Custom playlists, 29

D

Downloading music to a portable player, 57

E

European contact information *Title page*

F

Field Chooser, 33

Files

Music, 5

Filter Bar, 38

Full screen mode, 16

G

Getting CD information, 24

Graphic EQ, 16

Group Bar, 36

H

Highlights, 1

M

Music

 Organizing, 23

 Playing, 41

 Recording, 41, 49

 Searching, 13

Music files, 5

My Music library, 23

O

Online help

 Accessing, 6

 Via the web, 7

Organizing music, 23

Overview, 1

P

Panels, 9, 15
Playing CDs, 41
Playing music, 41
Playlist, 45
Playlists, 29
Portable player
 downloading music, 57
Preferences, 10

R

Random play, 43
Recording
 music, 41, 49
Reverb, 17

S

Searching for music, 13
Sending music to a portable player, 57
Serial Number
 Title page
Setting up Siren, 9
Siren
 Highlights, 1
 Overview, 1
 Preferences, 10
 Setting up, 9
 Window, 5
Skins, 14
Song Info, 20, 26
Sort Bar, 34
Status bar, 20
System requirements, 2

T

Technical support *Title page*

Transport controls, 47

Transport panel, 16

U

Using online help, 6

V

Volume, 20

W

Web site
 Help, using, 7