



US006098106A

United States Patent [19]

Philyaw et al.

[11] **Patent Number:** **6,098,106**

[45] **Date of Patent:** **Aug. 1, 2000**

- [54] METHOD FOR CONTROLLING A
COMPUTER WITH AN AUDIO SIGNAL**

5,357,276	10/1994	Banker et al.	348/7
5,438,355	8/1995	Palmer	348/1

(List continued on next page.)

[75] Inventors: **Jeffrey Jovan Philyaw**, Dallas; **David Kent Mathews**, Carrollton; **Brad Maxwell Smith**, Irving; **Paul Scovell Adams**, Dallas, all of Tex.

FOREIGN PATENT DOCUMENTS

[73] Assignee: **DigitalConvergence.com inc.**, Dallas, Tex.

0 152 341	8/1985	European Pat. Off. .
2 692 613	9/1994	France .
0 601 437 A1	6/1994	Germany .
WO 91/03891	3/1991	WIPO .
WO 95/28044	10/1995	WIPO .

OTHER PUBLICATIONS

[21] Appl. No.: 09/151,530

[22] Filed: **Sep. 11, 1998**

[51] **Int. Cl.**⁷ **G06F 15/00**; G06F 15/16

[52] U.S. Cl. 709/238; 709/218; 709/219;
709/224; 709/239

[58] **Field of Search** 709/238, 239,
709/245, 218, 224, 719; 345/327

“Integrating Traditional Media with the Web”, web page located at www.webchoicetv.com/products, 4 pages, by Web-Choice, Inc., Santa Monica, CA.

Web page for Symbol, located at www.symbol.com, 5 pages.

“Symbol CyberPen (previously know as InfoPen)”, web page located at www.symbol.com/products/consumer systems/consumer cyberpen, 2 pages.

Primary Examiner—Zarni Maung

Assistant Examiner—Almari Romero

Attorney, Agent, or Firm—Gregory M. Howison

[56] **References Cited**

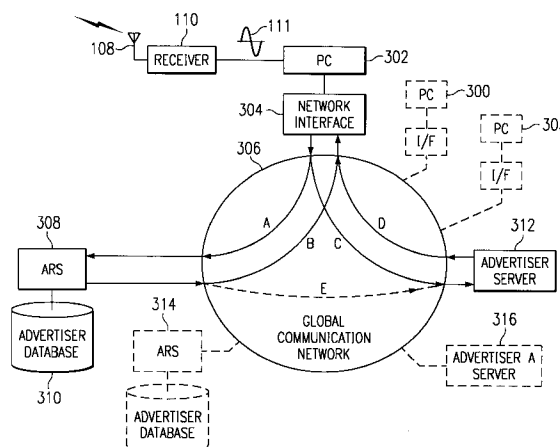
U.S. PATENT DOCUMENTS

3,668,312	6/1972	Yamamoto et al.	348/17
4,042,792	8/1977	Pakenham et al.	179/90
4,621,259	11/1986	Schepers et al.	345/180
4,654,482	3/1987	DeAngelis	379/95
4,816,904	3/1989	McKenna et al.	348/13
4,817,136	3/1989	Rhoads	379/375
4,841,132	6/1989	Kajitani et al.	235/462.46
4,894,789	1/1990	Yee	348/552
4,899,370	2/1990	Kameo et al.	379/104
4,905,094	2/1990	Pocock et al.	386/106
4,907,264	3/1990	Seiler et al.	379/216
4,937,853	6/1990	Brule et al.	379/91
4,947,028	8/1990	Gorog	235/380
4,975,948	12/1990	Andresen et al.	379/355
4,984,155	1/1991	Geier et al.	364/401
5,128,752	7/1992	Von Kohorn	705/10
5,144,654	9/1992	Kelley et al.	379/356
5,189,630	2/1993	Barstow et al.	364/514
5,247,347	9/1993	Litzl et al.	348/7
5,262,860	11/1993	Fitterpatrick et al.	348/461
5,285,278	2/1994	Holman	348/10
5,287,181	2/1994	Holman	348/473
5,305,195	4/1994	Murphy	705/1
5,319,454	6/1994	Schutte	348/5.5

[57] **ABSTRACT**

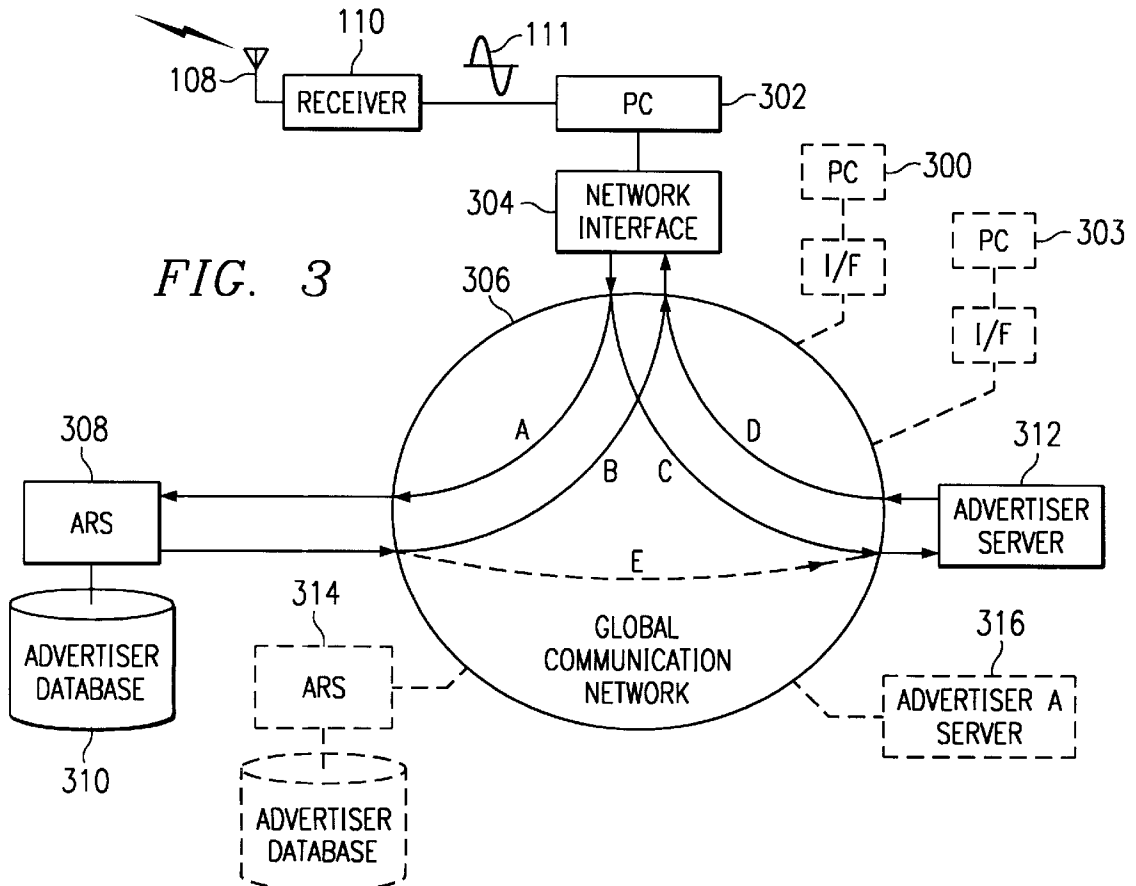
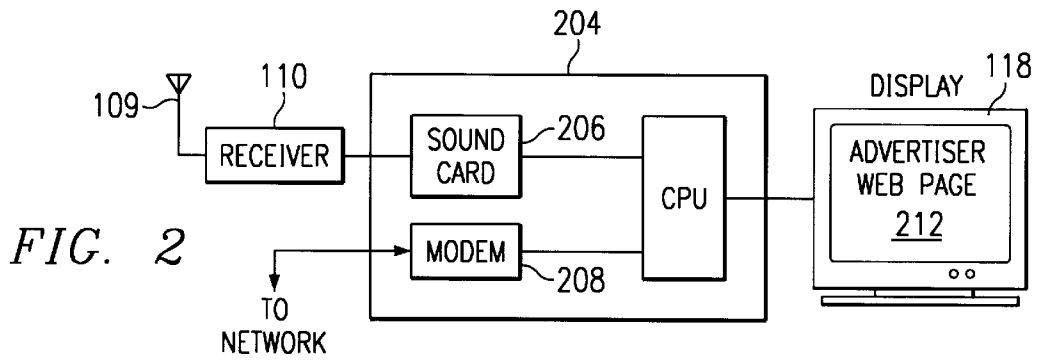
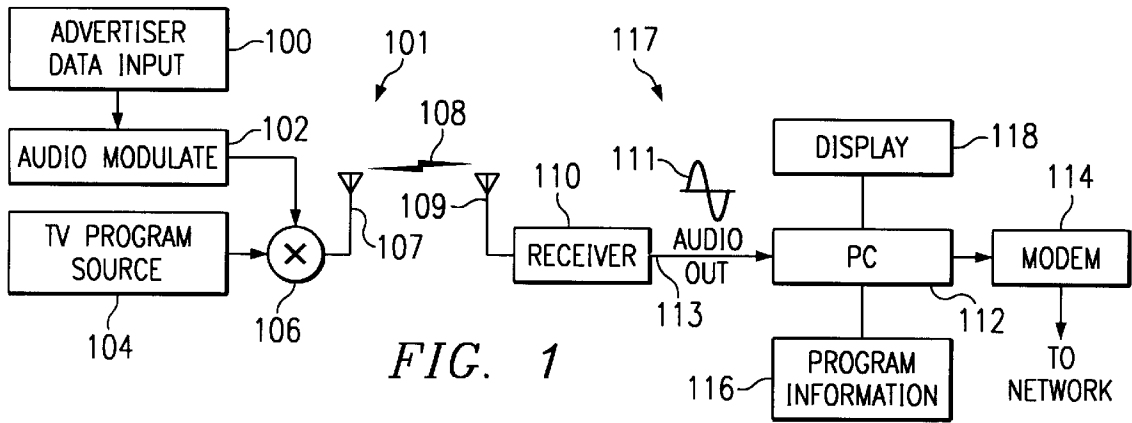
A method for controlling a computer by inputting an analog signal into the computer to control a web browser software application. The analog signal contains a trigger signal which activates proprietary software, and a product identifier. The proprietary software launches the web browser application on the computer, extracts the product identifier, and creates an appended data string by appending server address (URL) routing information to the product identifier information. The appended data string is automatically inserted into the web browser as keystroke data and routed to an advertiser reference server. The appended routing information directs communication to the advertiser reference server which contains a cross-referenced database of advertiser product identifier information and associated advertiser server URLs. The advertiser server URL and a request for product information relevant to the product identifier is returned to the computer web browser where it is automatically redirected to the advertiser server containing the advertiser product information. The advertiser product information is then returned to the computer for display.

18 Claims, 6 Drawing Sheets



U.S. PATENT DOCUMENTS

5,446,490	8/1995	Blahut et al.	348/7	5,905,251	5/1999	Knowles	235/472.01
5,446,919	8/1995	Wilkins	455/6.2	5,905,665	5/1999	Rim	364/746
5,491,508	2/1996	Friedell et al.	348/16	5,905,865	5/1999	Palmer et al.	395/200.47
5,570,295	10/1996	Isenberg et al.	379/90.01	5,907,793	5/1999	Reams	455/3.1
5,572,643	11/1996	Judson	395/793	5,915,090	6/1999	Joseph et al.	709/202
5,592,551	1/1997	Lett et al.	380/20	5,925,865	7/1999	Steger	235/379
5,594,226	1/1997	Steger	235/379	5,929,850	7/1999	Broadwin et al.	345/327
5,604,542	2/1997	Dedrick	348/552	5,933,468	11/1998	Guy et al.	434/350
5,640,193	6/1997	Wellner	348/7	5,933,829	8/1999	Durst et al.	707/10
5,664,110	9/1997	Green et al.	705/26	5,948,061	9/1999	Merriman et al.	709/219
5,675,721	10/1997	Freedman et al.	395/129	5,957,695	9/1999	Redford et al.	434/307 R
5,694,163	12/1997	Harrison	348/13	5,960,411	9/1999	Hartman et al.	705/26
5,708,780	1/1998	Levergood et al.	709/229	5,961,603	10/1999	Kunkel et al.	709/229
5,715,314	2/1998	Payne et al.	705/78	5,970,471	10/1999	Hill	705/26
5,724,424	3/1998	Gifford	705/79	5,970,472	10/1999	Allsop et al.	705/26
5,754,906	5/1998	Yoshida	396/448	5,971,277	10/1999	Cragun et al.	235/462.01
5,761,606	6/1998	Wolzien	455/6.2	5,974,443	10/1999	Jeske	709/202
5,768,528	6/1998	Stumm	709/231	5,974,451	10/1999	Simmons	709/218
5,774,664	6/1998	Hidary et al.	709/218	5,976,833	11/1999	Furukawa et al.	435/69.1
5,774,870	6/1998	Storey	705/14	5,978,773	11/1999	Hudetz et al.	709/219
5,778,367	7/1998	Wesinger, Jr.	707/10	5,991,739	11/1999	Cupps et al.	705/26
5,790,793	8/1998	Higley	709/218	6,002,394	12/1999	Schein et al.	345/327
5,794,210	8/1998	Goldhaber et al.	705/14	6,003,073	12/1999	Solvason	709/219
5,796,952	8/1998	Davis et al.	305/200.54	6,006,257	12/1999	Slezak	709/219
5,854,897	12/1998	Radziewicz et al.	709/224	6,009,410	12/1999	LeMole et al.	709/219
5,864,823	1/1999	Levitan	105/14	6,009,465	12/1999	Decker et al.	709/219
				6,018,764	1/2000	Field et al.	709/217



PATH A: SOURCE TO ARS



FIG. 4a

PATH B: ARS TO SOURCE

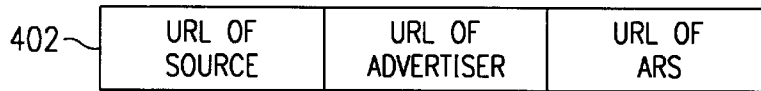


FIG. 4b

PATH C: SOURCE TO ADVERTISER



FIG. 4c

PATH D: ADVERTISER TO SOURCE

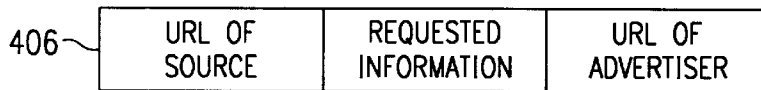


FIG. 4d

PATH E: ARS TO ADVERTISER (OPTIONAL)

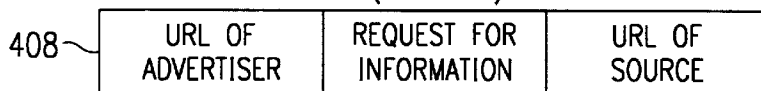


FIG. 4e

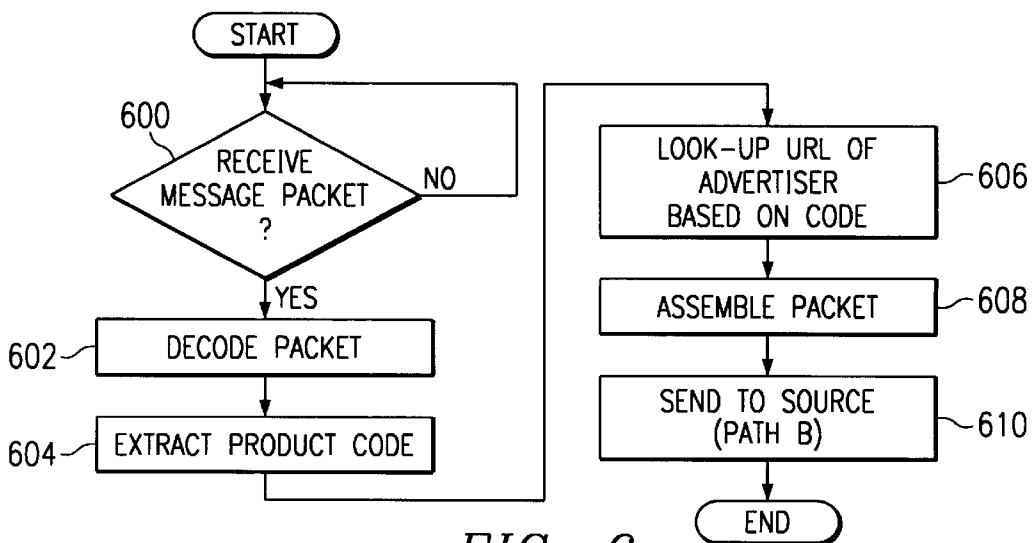


FIG. 6

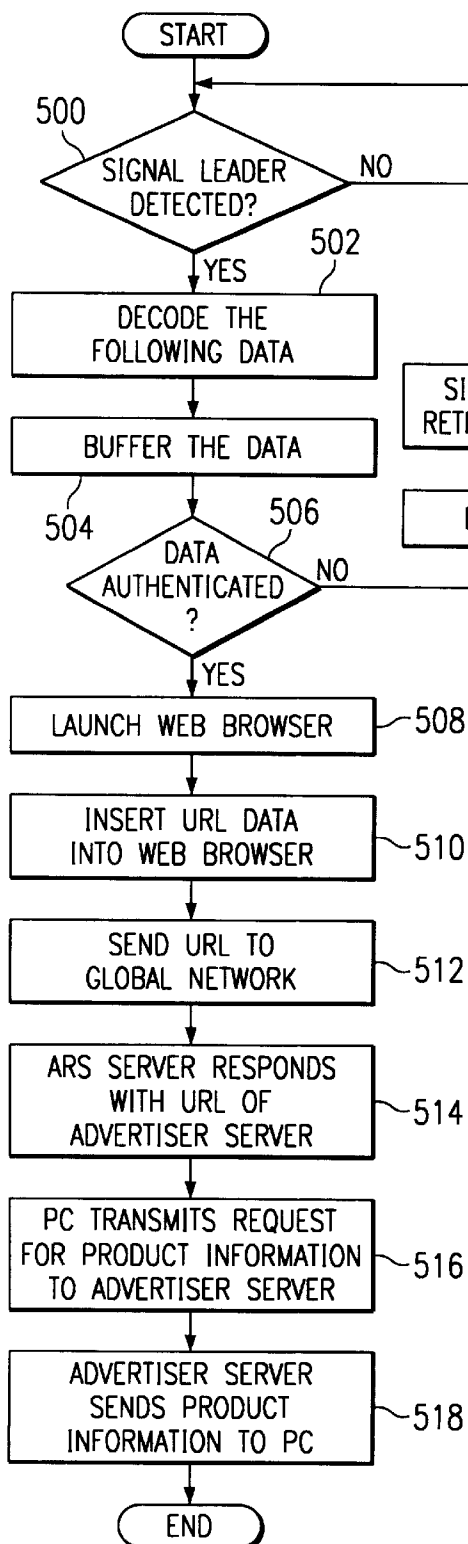


FIG. 5

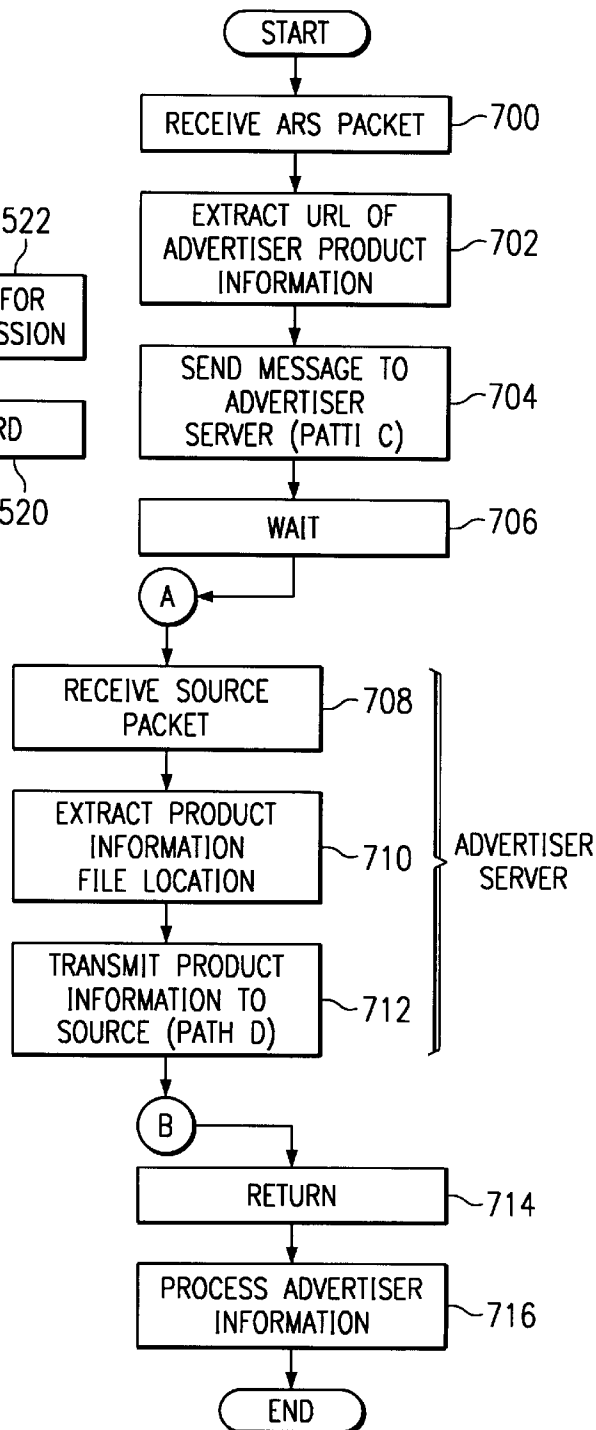


FIG. 7

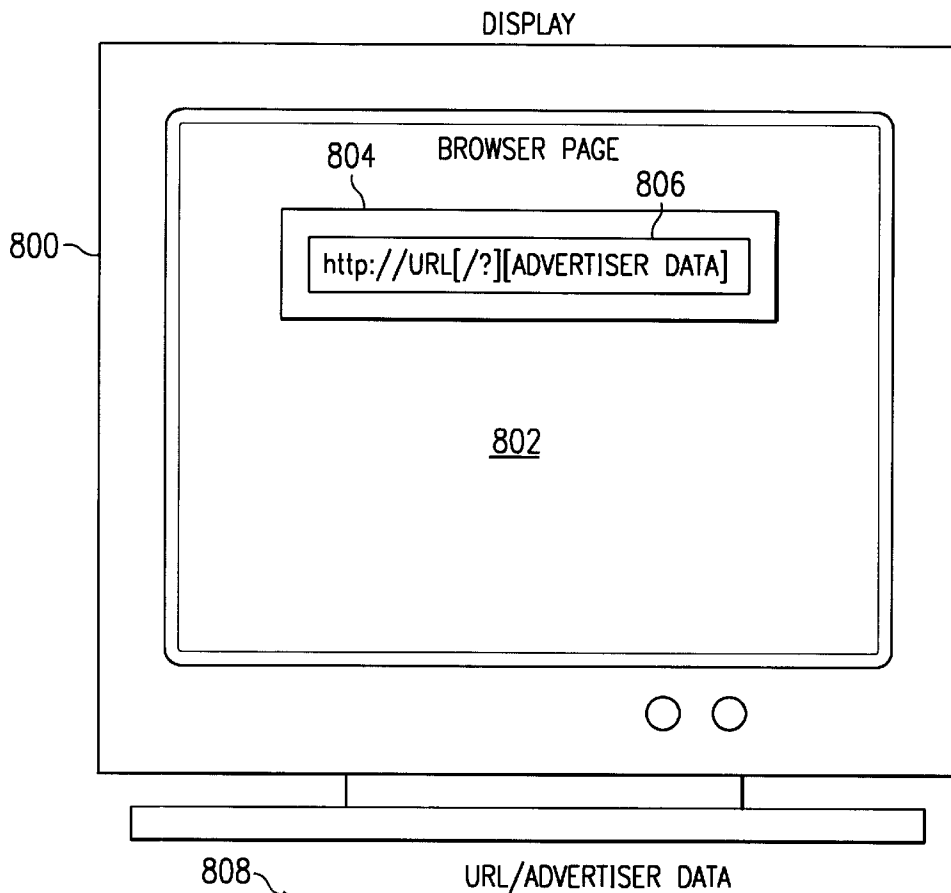


FIG. 8

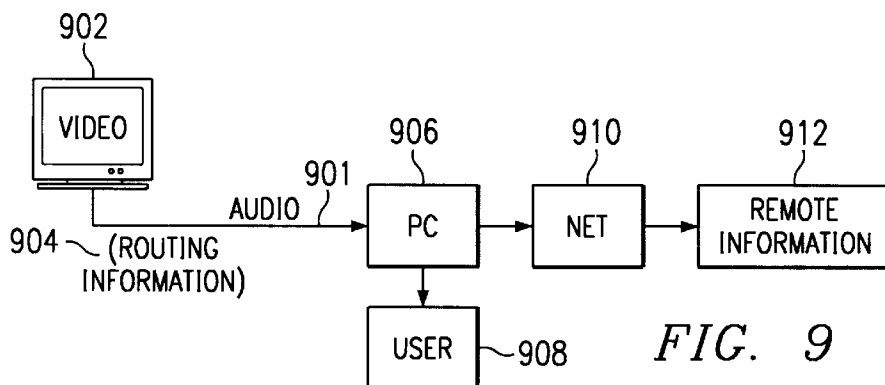
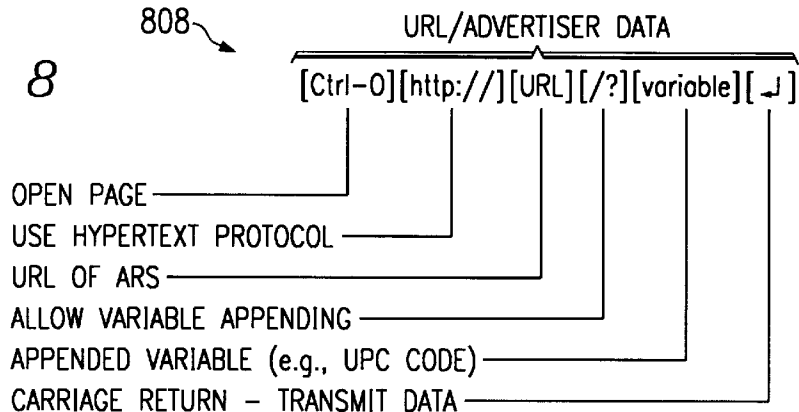
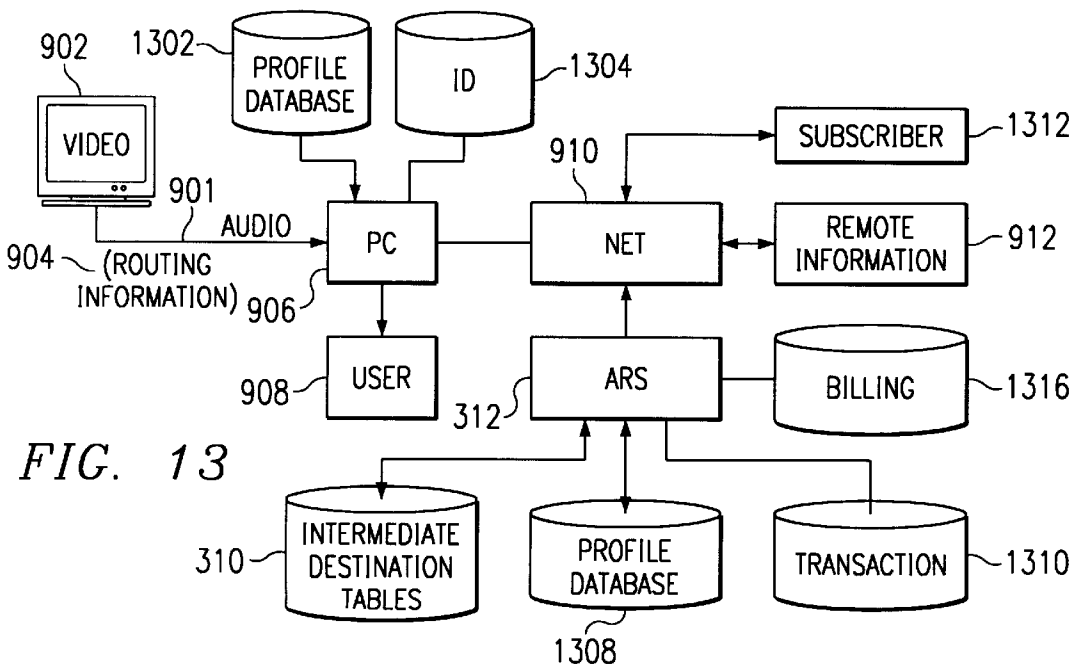
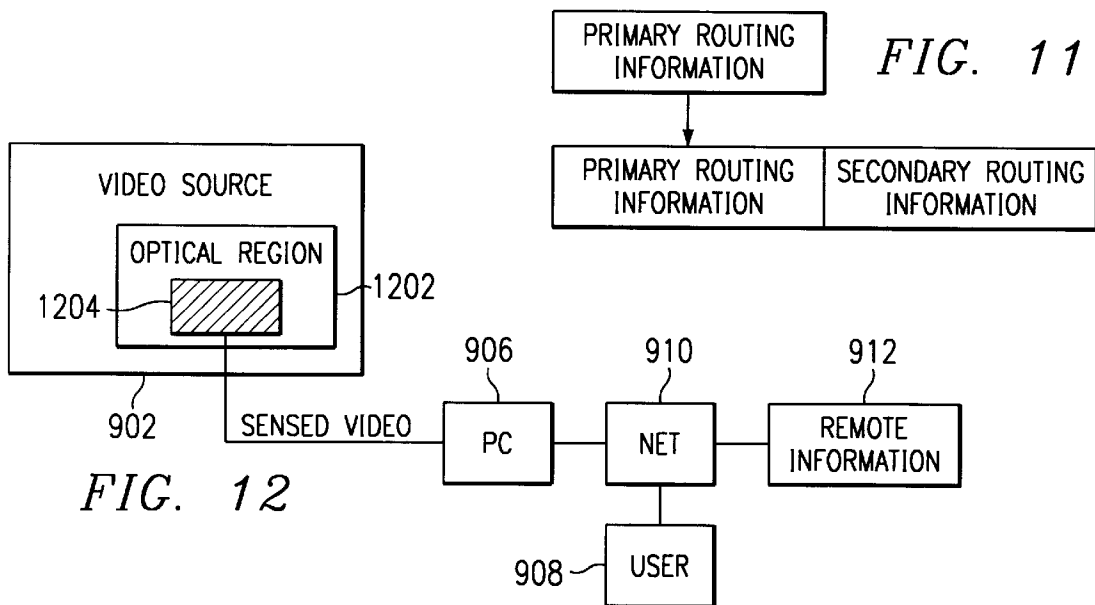
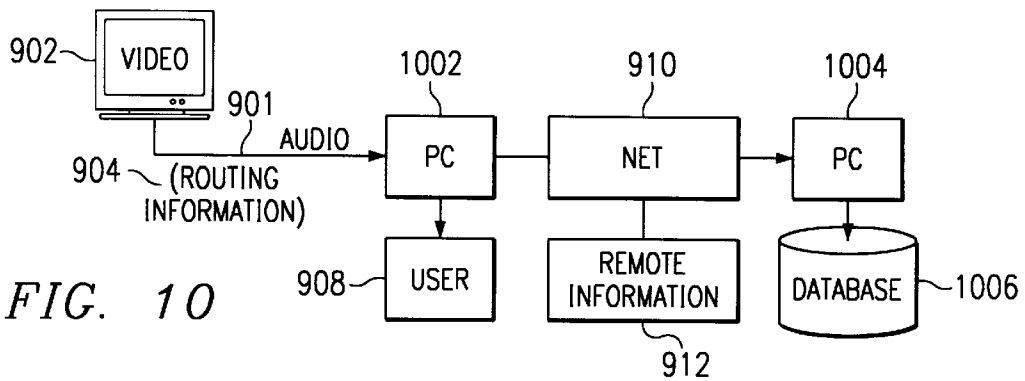


FIG. 9



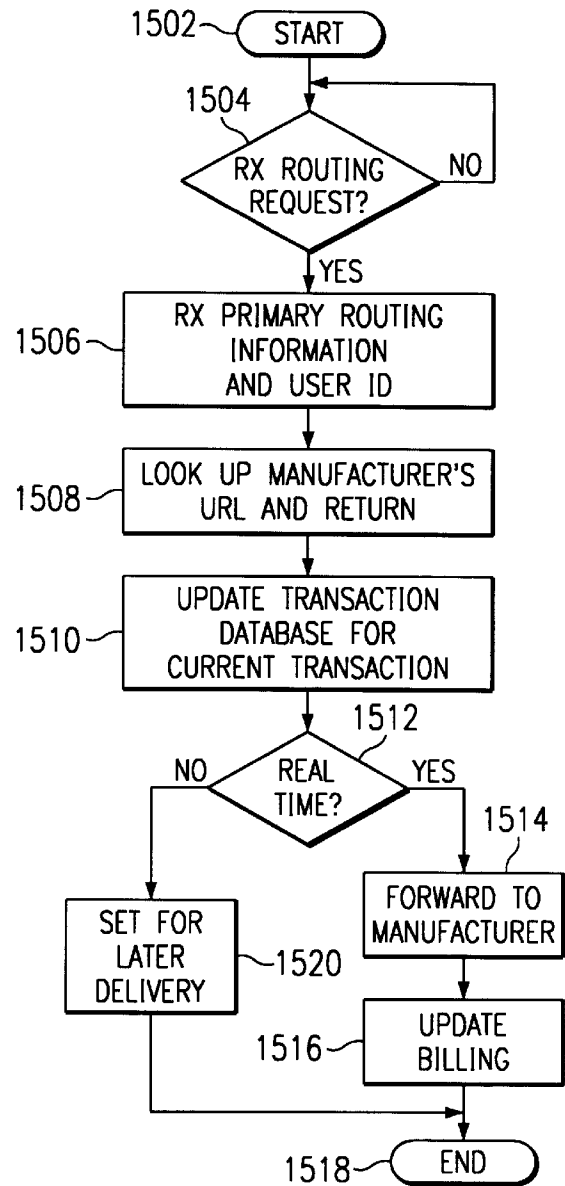
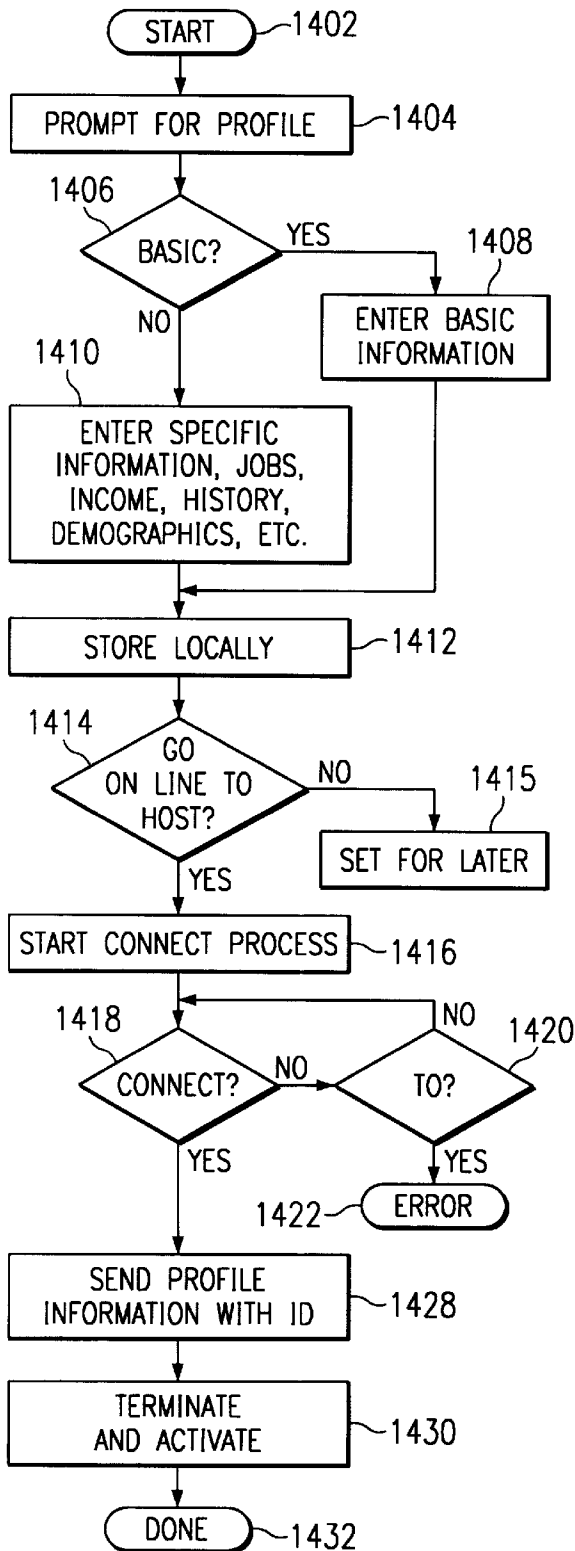


FIG. 15

1

METHOD FOR CONTROLLING A COMPUTER WITH AN AUDIO SIGNAL

This application is related to copending U.S. patent application Ser. No. 09/151,471, entitled, "METHOD FOR INTERFACING SCANNED PRODUCT INFORMATION WITH A SOURCE FOR THE PRODUCT OVER A GLOBAL NETWORK" filed of even date herewith.

TECHNICAL FIELD OF THE INVENTION

This invention is related to a method of computer control, and particularly for automatically directing a web browser application on the computer to retrieve and display information in response to an analog signal.

BACKGROUND OF THE INVENTION

With the growing numbers of computer users connecting to the "Internet," many companies are seeking the substantial commercial opportunities presented by such a large user base. For example, one technology which exists allows a television ("TV") signal to trigger a computer response in which the consumer will be guided to a personalized web page. The source of the triggering signal may be a TV, video tape recorder, or radio. For example, if a viewer is watching a TV program in which an advertiser offers viewer voting, the advertiser may transmit a unique signal within the television signal which controls a program known as a "browser" on the viewer's computer to automatically display the advertiser's web page. The viewer then simply makes a selection which is then transmitted back to the advertiser.

In order to provide the viewer with the capability of responding to a wide variety of companies using this technology, a database of company information and Uniform Resource Locator ("URL") codes is necessarily maintained in the viewer's computer, requiring continuous updates. URLs are short strings of data that identify resources on the Internet: documents, images, downloadable files, services, electronic mailboxes, and other resources. URLs make resources available under a variety of naming schemes and access methods such as HTTP, FTP, and Internet mail, addressable in the same simple way. URLs reduce the tedium of "login to this server, then issue this magic command . . ." down to a single click. The Internet uses URLs to specify the location of files on other servers. A URL includes the type of resource being accessed (e.g., Web, gopher, FTP), the address of the server, and the location of the file. The URL can point to any file on any networked computer. Current technology requires the viewer to perform periodic updates to obtain the most current URL database. This aspect of the current technology is cumbersome since the update process requires downloading information to the viewer's computer. Moreover, the likelihood for error in performing the update, and the necessity of redoing the update in the event of a later computer crash, further complicates the process. Additionally, current technologies are limited in the number of companies which may be stored in the database. This is a significant limitation since worldwide access presented by the Internet and the increasing number of companies connecting to perform on-line commerce necessitates a large database.

SUMMARY OF THE INVENTION

The present invention disclosed and claimed herein comprises a method for retrieving information from a storage

2

region having a defined location. A program is broadcasted having embedded therein a routing signal having routing information contained therein. The routing signal is then extracted from the broadcast. Thereafter, a personal computer is controlled to allow a user to retrieve the information from a storage region at the defined location, which defined location is located with the extracted routing information, providing it at the personal computer for use by the user.

BRIEF DESCRIPTION OF THE DRAWINGS

For a more complete understanding of the present invention and the advantages thereof, reference is now made to the following description taken in conjunction with the accompanying Drawings in which:

FIG. 1 illustrates a block diagram of the preferred embodiment;

FIG. 2 illustrates the computer components employed in this embodiment;

FIG. 3 illustrates system interactions over a global network;

FIGS. 4a-4e illustrate the various message packets transmitted between the source PC and network servers used in the preferred embodiment; and

FIG. 5 is a flowchart depicting operation of the system according to the preferred embodiment.

FIG. 6 illustrates a flowchart of actions taken by the Advertiser Reference Server ("ARS") server;

FIG. 7 illustrates a flowchart of the interactive process between the source computer and ARS;

FIG. 8 illustrates a web browser page receiving the modified URL/advertiser product data according to the preferred embodiment;

FIG. 9 illustrates a simplified block diagram of the disclosed embodiment;

FIG. 10 illustrates a more detailed, simplified block diagram of the embodiment of FIG. 9;

FIG. 11 illustrates a diagrammatic view of a method for performing the routing operation;

FIG. 12 illustrates a block diagram of an alternate embodiment utilizing an optical region in the video image for generating the routing information;

FIG. 13 illustrates a block diagram illustrating the generation of a profile with the disclosed embodiment;

FIG. 14 illustrates a flowchart for generating the profile and storing at the ARS; and

FIG. 15 illustrates a flowchart for processing the profile information when information is routed to a user.

DETAILED DESCRIPTION OF THE INVENTION

Referring now to FIG. 1, there is illustrated a block diagram of a system for controlling a personal computer ("PC") 112 via an audio tone transmitted over a wireless system utilizing a TV. In the embodiment illustrated in FIG. 1, there is provided a transmission station 101 and a receive station 117 that are connected via a communication link 108. The transmission station 101 is comprised of a television program source 104, which is operable to generate a program in the form of a broadcast signal comprised of video and audio. This is transmitted via conventional techniques along channels in the appropriate frequencies. The program source is input to a mixing device 106, which mixing device is operable to mix in an audio signal. This audio signal is

derived from an audio source **100** which comprises a coded audio signal which is then modulated onto a carrier which is combined with the television program source **104**. This signal combining can be done at the audio level, or it can even be done at the RF level in the form of a different carrier. However, the preferred method is to merely sum the audio signal from the modulator **102** into the audio channel of the program that is generated by the television program source **104**. The output thereof is provided from the mixing device **106** in the form of broadcast signal to an antenna **107**, which transmits the information over the communication link **108** to an antenna **109** on the receive side.

On the receive side of the system, a conventional receiver **110**, such as a television is provided. This television provides a speaker output which provides the user with an audible signal. This is typically associated with the program. However, the receiver **110** in the disclosed embodiment, also provides an audio output jack, this being the type RCA jack. This jack is utilized to provide an audio output signal on a line **113** which is represented by an audio signal **111**. This line **113** provides all of the audio that is received over the communication link **108** to the PC **112** in the audio input port on the PC **112**. However, it should be understood that, although a direct connection is illustrated from the receiver **110** to the PC **112**, there actually could be a microphone pickup at the PC **112** which could pick the audio signal up. In the disclosed embodiment the audio signal generated by the advertiser data input device **100** is audible to the human ear and, therefore, can be heard by the user. Therefore, no special filters are needed to provide this audio to the PC **112**.

The PC **112** is operable to run programs thereon which typically are stored in a program file area **116**. These programs can be any type of programs such as word processing programs, application programs, etc. In the disclosed embodiment, the program that is utilized in the system is what is referred to as a "browser." The PC **112** runs a browser program to facilitate the access of information on the network, for example, a global communication network known as the "Internet" or the World-Wide-Web ("Web"). The browser is a hypertext-linked application used for accessing information. Hypertext is a term used to describe a particular organization of information within a data processing system, and its presentation to a user. It exploits the computer's ability to link together information from a wide variety of sources to provide the user with the ability to explore a particular topic. The traditional style of presentation used in books employs an organization of the information which is imposed upon it by limitations of the medium, namely fixed sized, sequential paper pages. Hypertext systems, however, use a large number of units of text or other types of data such as image information, graphical information, video information, or sound information, which can vary in size. A collection of such units of information is termed a hypertext document, or where the hypertext documents employ information other than text, hypermedia documents. Multimedia communications may use the Hypertext Transfer Protocol ("HTTP"), and files or formatted data may use the Hypertext Markup Language ("HTML"). This formatting language provides for a mingling of text, graphics, sound, video, and hypertext links by "tagging" a text document using HTML. Data encoded using HTML is often referred to as an "HTML document," an "HTML page," or a "home page." These documents and other Internet resources may be accessed across the network by means of a network addressing scheme which uses a locator referred to as a Uniform Resource Locator ("URL"), for example, "http://www.digital.com."

The Internet is one of the most utilized networks for interconnecting distributed computer systems and allows users of these computer systems to exchange data all over the world. Connected to the Internet are many private networks, for example, corporate or commercial networks. Standard protocols, such as the Transport Control Protocol ("TCP") and the Internet Protocol ("IP") provide a convenient method for communicating across these diverse networks. These protocols dictate how data are formatted and communicated. As a characteristic of the Internet, the protocols are layered in an IP stack. At higher levels of the IP stack, such as the application layer (where HTTP is employed), the user information is more readily visible, while at lower levels, such as the network level (where TCP/IP are used), the data can merely be observed as packets or a stream of rapidly moving digital signals. Superimposed on the Internet is a standard protocol interface for accessing Web resources, such servers, files, Web pages, mail messages, and the like. One way that Web resources can be accessed is by browsers made by Netscape® and Microsoft Internet Explorer®.

Referring again now to FIG. 1, the user can load this program with the appropriate keystrokes such that a browser window will be displayed on a display **118**. In one embodiment, the user can run the browser program on the PC **112** such that the browser window is displayed on the display **118**. While watching a preferred program, the user can also view display **118**. When an audio signal is received by the receiver **110** and the encoded information is contained therein that was input thereto by the advertiser, the PC **112** will then perform a number of operations. The first operation, according to the disclosed embodiment, is to extract the audio information within the received audio signal in the form of digital data, and then transmit this digital data to a defined location on the global communication network via a modem connection **114**. This connection will be described hereinbelow. This information will be relayed to a proprietary location and the instructions sent back to the PC **112** as to the location of the advertiser associated with the code, and the PC **112** will then effect a communication link to that location such that the user can view on the display **118** information that the advertiser, by the fact of putting the tone onto the broadcast channel, desires the viewer to view. This information can be in the form of interactive programs, data files, etc. In one example, when an advertisement appears on the television, the tone can be generated and then additional data displayed on the display **118**. Additionally, a streaming video program could be played on the PC received over the network, which streaming video program is actually longer than the advertising segment on the broadcast. Another example would be a sports game that would broadcast the tone in order to allow a user access to information that is not available over the broadcast network, such as additional statistics associated with the sports program, etc.

By utilizing the system described herein with respect to the disclosed embodiment of FIG. 1, an advertiser is allowed the ability to control a user's PC **112** through the use of tones embedded within a program audio signal. As will be described hereinbelow, the disclosed embodiment utilizes particular routing information stored in the PC **112** which allows the encoded information in the received audio signal to route this information to a desired location on the network and then allow other routing information to be returned to the PC **112** for control thereof to route the PC **112** to the appropriate location associated with that code.

Referring now to FIG. 2, there is illustrated a computer **204**, similar to computer **112**, connected to display infor-

mation on display 118. The computer 204 comprises an internal audio or "sound" card 206 for receiving the transmitted audio signal through receive antenna 109 and receiver 110. The sound card 206 typically contains analog-to-digital circuitry for converting the analog audio signal into a digital signal. The digital signal may then be more easily manipulated by software programs. The receiver 110 separates the audio signal from the video signal. A special trigger signal located within the transmitted advertiser audio signal triggers proprietary software running on the computer 204 which launches a communication application, in this particular embodiment, the web browser application located on the PC 204. Coded advertiser information contained within the audio signal is then extracted and appended with the address of a proprietary server located on the communication network. The remote server address is in the form of a URL. This appended data, in addition to other control codes, is inserted directly into the web browser application for automatic routing to the communication network. The web browser running on PC 204, and communicating to the network with a through an internal modem 208, in this embodiment, transmits the advertiser information to the remote server. The remote server cross-references the advertiser product information to the address of the advertiser server located on the network. The address of the advertiser server is routed back through the PC 204 web browser to the advertiser server. The advertiser product information is returned to PC 204 to be presented to the viewer on display 118. In this particular embodiment, the particular advertiser product information displayed is contained within the advertiser's web page 212. As mentioned above, the audio signal is audible to the human ear. Therefore the audio signal, as emitted from the TV speakers, may be input to the sound card 206 via a microphone. Furthermore, the audio signal need not be a real-time broadcast, but may be on video tapes, CDs, DVD, or other media which may be displayed at a later date. With the imminent implementation of high definition digital television, the audio signal output from the TV may also be digital. Therefore, direct input into a sound card for A/D purposes may not be necessary, but alternative interfacing techniques to accommodate digital-to-digital signal formats would apply.

Referring now to FIG. 3, there is illustrated a source PC 302, similar to PCs 204 and 112, connected to a global communication network 306 through an interface 304. In this embodiment, the audio signal 111 is received by PC 302 through its sound card 206. The audio signal 111 comprises a trigger signal which triggers proprietary software into launching a web browser application residing on the PC 302. The audio signal 111 also comprises advertiser product information which is extracted and appended with URL information of an Advertiser Reference Server ("ARS") 308. The ARS 308 is a system disposed on the network that is defined as the location to which data in the audio signal 111 is to be routed. As such, data in the audio signal 111 will always be routed to the ARS 308, since a URL is unique on the network system. Connected to the ARS 308 is a database 310 of product codes and associated manufacturer URLs. The database 310 undergoes a continual update process which is transparent to the user. As companies sign-on, e.g., subscribe, to this technology, manufacturer and product information is added to the database 310 without interrupting operation of the source PC 302 with frequent updates. When the advertiser server address URL is obtained from the ARS database 310, it and the request for the particular advertiser product information is automatically routed back through the web browser on PC 302, over to the respective

advertiser server for retrieval of the advertiser product information to the PC 302. It should be noted that although the disclosed invention discusses a global communication network, the system is also applicable to LANs, WANs, and peer-to-peer network configurations. It should be noted that the disclosed architecture is not limited to a single source PC 302, but may comprise a plurality of source PCs, e.g., PC 300 and PC 303. Moreover, a plurality of ARS 308 systems and advertiser servers 312 may be implemented, e.g., ARS 314, and advertiser server A 316, respectively.

The information transactions, in general, which occur between the networked systems of this embodiment, over the communication network, are the following. The web browser running on source PC 302 transmits a message packet to the ARS 308 over Path "A." The ARS 308 decodes the message packet and performs a cross-reference function with product information extracted from the received message packet to obtain the address of an advertiser server 312. A new message packet is assembled comprising the advertiser server 312 address, and sent back to the source PC 302 over Path "B." A "handoff" operation is performed whereby the source PC 302 browser simply reroutes the information on to the advertiser server 312 over Path "C," with the appropriate source and destination address appended. The advertiser server 312 receives and decodes the message packet. The request-for-advertiser-product-information is extracted and the advertiser 312 retrieves the requested information from its database for transmission back to the source PC 302 over Path "D." The source PC 302 then processes the information, i.e., for display to the viewer. The optional Path "E" is discussed hereinbelow. It should be noted that the disclosed methods are not limited to only browser communication applications, but may accommodate, with sufficient modifications by one skilled in the art, other communication applications used to transmit information over the Internet or communication network.

Referring now to FIG. 4a, the message packet 400 sent from the source PC 302 to ARS 308 via Path "A" comprises several fields. One field comprises the URL of the ARS 308 which indicates where the message packet is to be sent. Another field comprises the advertiser product code or other information derived from the audio signal 111, and any additional overhead information required for a given transaction. The product code provides a link to the address of the advertiser server 312, located in the database 310. Yet another field comprises the network address of the source PC 302. In general, network transmissions are effected in packets of information, each packet providing a destination address, a source address, and data. These packets vary depending upon the network transmission protocol utilized for communication. Although the protocols utilized in the disclosed embodiment are of a conventional protocol suite commonly known as TCP/IP, it should be understood that any protocols providing the similar basic functions can be used, with the primary requirement that a browser can forward the routing information to the desired URL in response to keystrokes being input to a PC. However, it should be understood that any protocol can be used, with the primary requirement that a browser can forward the product information to the desired URL in response to keystrokes being input to a PC. Within the context of this disclosure, "message packet" shall refer to and comprise the destination URL, product information, and source address, even though more than a single packet must be transmitted to effect such a transmission.

Upon receipt of the message packet 400 from source PC 302, ARS 308 processes the information in accordance with

instructions embedded in the overhead information. The ARS 308 specifically will extract the product code information from the received packet 400 and, once extracted, will then decode this product code information. Once decoded, this information is then compared with data contained within the ARS advertiser database 310 to determine if there is a "hit." If there is no "hit" indicating a match, then information is returned to the browser indicating such. If there is a "hit," a packet 402 is assembled which comprises the address of the source PC 302, and information instructing the source PC 302 as to how to access, directly in a "handoff" operation, another location on the network, that of an advertiser server 312. This type of construction is relatively conventional with browsers such as Netscape® and Microsoft Internet Explorer® and, rather than displaying information from the ARS 308, the source PC 302 can then access the advertiser server 312. The ARS 308 transmits the packet 402 back to source PC 302 over Path "B." Referring now to FIG. 4b, the message packet 402 comprises the address of the source PC 302, the URL of the advertiser server 312 embedded within instructional code, and the URL of the ARS 308.

Upon receipt of the message packet 402 by the source PC 302, the message packet 402 is disassembled to obtain pertinent routing information for assembly of a new message packet 404. The web browser running on source PC 302 is now directed to obtain, over Path "C," the product information relevant to the particular advertiser server 312 location information embedded in message packet 404. Referring now to FIG. 4c, the message packet 404 for this transaction comprises the URL of the advertiser server 312, the request-for-product-information data, and the address of the source PC 302.

Upon receipt of the message packet 404 from source PC 302, advertiser server 312 disassembles the message packet 404 to obtain the request-for-product-information data. The advertiser server 312 then retrieves the particular product information from its database, and transmits it over Path "D" back to the source PC 302. Referring now to FIG. 4d, the message packet 406 for this particular transaction comprises the address of the source PC 302, the requested information, and the URL of the advertiser server 312.

Optionally, the ARS 308 may make a direct request for product information over Path "E" to advertiser server 312. In this mode, the ARS 308 sends information to the advertiser server 312 instructing it to contact the source PC 302. This, however, is unconventional and requires more complex software control. The message packet 408 for this transaction is illustrated in FIG. 4e, which comprises the URL of the advertiser server 312, the request-for-product-information data, and the address of the source PC 302. Since product information is not being returned to the ARS 308, but directly to the source PC 302, the message packet 408 requires the return address to be that of the source PC 302. The product information is then passed directly to PC 302 over Path "D."

Referring now to FIG. 5, the method for detecting and obtaining product information is as follows. In decision block 500, a proprietary application running resident on a source computer PC 302 (similar to PC 204) monitors the audio input for a special trigger signal. Upon detection of the trigger signal, data following the trigger signal is decoded for further processing, in function block 502. In function block 504, the data is buffered for further manipulation. In decision block 506, a determination is made as to whether the data can be properly authenticated. If not, program flow continues through the "N" signal to function block 520

where the data is discarded. In function block 522, the program then signals for a retransmission of the data. The system then waits for the next trigger signal, in decision block 500. If properly authenticated in decision block 506, program flow continues through the "Y" signal path where the data is then used to launch the web browser application, as indicated in function block 508. In function block 510, the web browser receives the URL data, which is then automatically routed through the computer modem 208 to the network interface 304 and ultimately to the network 306. In function block 514, the ARS 308 responds by returning the URL of advertiser server 312 to the PC 302.

In function block 516, the web browser running on the source PC 302, receives the advertiser URL information from the ARS 308, and transmits the URL for the product file to the advertiser server 312. In block 518, the advertiser server 312 responds by sending the product information to the source PC 302 for processing.

The user may obtain the benefits of this architecture by simply downloading the proprietary software over the network. Other methods for obtaining the software are well-known; for example, by CD, diskette, or pre-loaded hard drives.

Referring now to FIG. 6, there is illustrated a flowchart of the process the ARS 308 may undergo when receiving the message packet 400 from the source PC 302. In decision block 600, the ARS 308 checks for the receipt of the message packet 400. If a message packet 400 is not received, program flow moves along the "N" path to continue waiting for the message. If the message packet 400 is received, program flow continues along path "Y" for message processing. Upon receipt of the message packet 400, in function block 602, the ARS 308 decodes the message packet 400. The product code is then extracted independently in function block 604 in preparation for matching the product code with the appropriate advertiser server address located in the database 310. In function block 606, the product code is then used with a look-up table to retrieve the advertiser server 312 URL of the respective product information contained in the audio signal data. In function block 608, the ARS 308 then assembles message packet 402 for transmission back to the source PC 302. Function block 610 indicates the process of sending the message packet 402 back to the source PC 302 over Path "B."

Referring now to FIG. 7, there is illustrated a flowchart of the interactive processes between the source PC 302 and the advertiser server 312. In function block 700, the source PC 302 receives the message packet 402 back from the ARS 308 and begins to decode the packet 402. In function block 702, the URL of the advertiser product information is extracted from the message packet 402 and saved for insertion into the message packet 404 to the advertiser server 312. The message packet 404 is then assembled and sent by the source PC 302 over Path "C" to the advertiser server 312, in function block 704. While the source PC 302 waits, in function block 706, the advertiser server 312 receives the message packet 404 from the source PC 302, in function block 708, and disassembles it. The product information location is then extracted from the message packet 404 in function block 710. The particular product information is retrieved from the advertiser server 312 database for transmission back to the source PC 302. In function block 712, the product information is assembled into message packet 406 and then transmitted back to the source PC 302 over Path "D." Returning to the source PC 302 in function block 714, the advertiser product information contained in the message packet 406 received from the advertiser server 312, is then extracted and processed in function block 716.

Referring now to FIG. 8, after receipt of a trigger signal, a web browser application on a source PC 302 is automatically launched and computer display 800 presents a browser page 802. Proprietary software running on the source PC 302 processes the audio signal data after being digitized through the sound card 206. The software appropriately prepares the data for insertion directly into the web browser by extracting the product information code and appending keystroke data to this information. First, a URL page 804 is opened in response to a Ctrl-O command added by the proprietary software as the first character string. Opening URL page 804 automatically positions the cursor in a field 806 where additional keystroke data following the Ctrl-O command will be inserted. After URL page 804 is opened, the hypertext protocol preamble http:// is inserted into the field 806. Next, URL information associated with the location of the ARS 308 is inserted into field 806. Following the ARS 308 URL data are the characters /? to allow entry of variables immediately following the /? characters. In this embodiment, the variable following is the product information code received in the audio signal. The product code information also provides the cross-reference information for obtaining the advertiser URL from the ARS database 310. Next, a carriage return is added to send the URL/product data and close the window 804. After the message packet 400 is transmitted to the ARS 308 from the source PC 302, transactions from the ARS 308, to the source PC 302, to the advertiser server 312, and back to the source PC 302, occur quickly and are transparent to the viewer. At this point, the next information the viewer sees is the product information which was received from the advertiser server 312.

Referring now to FIG. 9, there is illustrated a block diagram of a more simplified embodiment. In this embodiment, a video source 902 is provided which is operable to provide an audio output on an audio cable 901 which provides routing information referred to by reference numeral 904. The routing information 904 is basically information contained within the audio signal. This is an encoded or embedded signal. The important aspect of the routing information 904 is that it is automatically output in realtime as a function of the broadcast of the video program received over the video source 902. Therefore, whenever the program is being broadcast in realtime to the user 908, the routing information 904 will be output whenever the producer of the video desires it to be produced. It should be understood that the box 902 representing the video source could be any type of media that will result in the routing information being output. This could be a cassette player, a DVD player, an audio cassette, a CD ROM or any such media. It is only important that this is a program that the producer develops which the user 908 watches in a continuous or a streaming manner. Embedded within that program, at a desired point selected by the producer, the routing information 904 is output.

The audio information is then routed to a PC 906, which is similar to the PC 112 in FIG. 1. A user 908 is interfaced with the PC to receive information thereof, the PC 906 having associated therewith a display (not shown). The PC 906 is interfaced with a network 910, similar to the network 306 in FIG. 3. This network 910 has multiple nodes thereon, one of which is the PC 906, and another of which is represented by a network node 912 which represents remote information. The object of the present embodiment is to access remote information for display to the user 908 by the act of transmitting from the video program in block 902 the routing information 904. This routing information 904 is utilized to allow the PC 906 which has a network "browser"

running thereon to "fetch" the remote information at the node 912 over the network 910 for display to the user 908. This routing information 904 is in the form of an embedded code within the audio signal, as was described hereinabove.

Referring now to FIG. 10, there is illustrated a more detailed block diagram of the embodiment of FIG. 9. In this embodiment, the PC 906 is split up into a couple of nodes, a first PC 1002 and a second PC 1004. The PC 1002 resides at the node associated with the user 908, and the PC 1004 resides at another node. The PC 1004 represents the ARS 308 of FIG. 3. The PC 1004 has a database 1006 associated therewith, which is basically the advertiser database 310. Therefore, there are three nodes on the network 910 necessary to implement the disclosed embodiment, the PC 1002, the PC 1004 and the remote information node 912. The routing information 904 is utilized by the PC 1002 for routing to the PC 1004 to determine the location of the remote information node 912 on the network 910. This is returned to the PC 1002 and a connection made directly with the remote information node 912 and the information retrieved therefrom to the user 908. The routing information 904 basically constitutes primary routing information.

Referring now to FIG. 11, there is illustrated a diagrammatic view of how the network packet is formed for sending the primary routing information to the PC 1004. In general, the primary routing information occupies a single field which primary routing information is then assembled into a data packet with the secondary routing information for transfer to the network 910. This is described hereinabove in detail.

Referring now to FIG. 12, there is illustrated an alternate embodiment to that of FIG. 9. In this embodiment, the video source 902 has associated therewith an optical region 1202, which optical region 1202 has disposed therein an embedded video code. This embedded video code could be relatively complex or as simple as a grid of dark and white regions, each region in the grid able to have a dark color for a logic "1" or a white region for a logic "0." This will allow a digital value to be disposed within the optical region 1202. A sensor 1204 can then be provided for sensing this video code. In the example above, this would merely require an array of optical detectors, one for each region in the grid to determine whether this is a logic "1" or a logic "0" state. One of the sensed video is then output to the PC 906 for processing thereof to determine the information contained therein, which information contained therein constitutes the primary routing information 904. Thereafter, it is processed as described hereinabove with reference to FIG. 9.

Referring now to FIG. 13, there is illustrated a block diagram for an embodiment wherein a user's profile can be forwarded to the original subscriber or manufacturer. The PC 906 has associated therewith a profile database 1302, which profile database 1302 is operable to store a profile of the user 908. This profile is created when the program, after initial installation, requests profile information to be input in order to activate the program. In addition to the profile, there is also a unique ID that is provided to the user 908 in association with the browser program that runs on the PC 906. This is stored in a storage location represented by a block 1304. This ID 1304 is accessible by a remote location as a "cookie" which is information that is stored in the PC 906 in an accessible location, which accessible location is actually accessible by the remote program running on a remote node.

The ARS 308, which basically constitutes the PC 1004 of FIG. 10, is operable to have associated therewith a profile

database **1308**, which profile database **1308** is operable to store profiles for all of the users. The profile database **1308** is a combination of the stored in profile database **1302** for all of the PCs **906** that are attachable to the system. This is to be distinguished from information stored in the database **310**, the advertiser's database, which contains intermediate destination tables. When the routing information in the primary routing information **904** is forwarded to the ARS **308** and extracted from the original data packet, the look-up procedure described hereinabove can then be performed to determine where this information is to be routed. The profile database **1302** is then utilized for each transaction, wherein each transaction in the form of the routing information received from the primary routing information **904** is compared to the destination tables **310** to determine what manufacturer it is associated with. The associated ID **1304** that is transmitted along with the routing information in primary routing information **904** is then compared with the profile database **1308** to determine if a profile associated therewith is available. This information is stored in a transaction database **1310** such that, at a later time, for each routing code received in the form of the information in primary routing information **904**, there will associated therewith the IDs **1304** of each of the PCs **906**. The associated profiles in database **1308**, which are stored in association with IDs **1304**, can then be assembled and transmitted to a subscriber as referenced by a subscriber node **1312** on the network **910**. The ARS **308** can do this in two modes, a realtime mode or a non-realtime mode. In a realtime mode, each time a PC **906** accesses the advertiser database **310**, that user's profile information is uploaded to the subscriber node **1312**. At the same time, billing information is generated for that subscriber **1312** which is stored in a billing database **1316**. Therefore, the ARS **308** has the ability to inform the subscriber **1312** of each transaction, bill for those transactions, and also provide to the subscriber **1312** profile information regarding who is accessing the particular product advertisement having associated therewith the routing information field **904** for a particular routing code as described hereinabove. This information, once assembled, can then be transmitted to the subscriber **1312** and also be reflected in billing information and stored in the billing information database **1316**.

Referring now to FIG. **14**, there is illustrated a flowchart depicting the operation for storing the profile for the user. The program is initiated in a block **1402** and then proceeds to a function block **1404**, wherein the system will prompt for the profile upon initiation of the system. This initiation is a function that is set to activate whenever the user initially loads the software that he or she is provided. The purpose for this is to create, in addition to the setup information, a user profile. Once the user is prompted for this, then the program will flow to a decision block **1406** to determine whether the user provides basic or detailed information. This is selectable by the user. If selecting basic, the program will flow to a function block **1408** wherein the user will enter basic information such as name and serial number and possibly an address. However, to provide some incentive to the user to enter more information, the original prompt in function block **1404** would have offers for such things as coupons, discounts, etc, if the user will enter additional information. If the user selects this option, the program from the decision block **1406** to a function block **1410**. In the function block **1410**, the user is prompted to enter specific information such as job, income level, general family history, demographic information and more. There can be any amount of information collected in this particular function block.

Once all of the information is collected, in either the basic mode or the more specific mode, the program will then flow to a function block **1412** where this information is stored locally. The program then flows to a decision block **1414** to then go on-line to the host or the ARS **308**. In general, the user is prompted to determine whether he or she wants to send this information to the host at the present time or to send it later. If he or she selects the "later" option, the program will flow to a function block **1415** to prompt the user at a later time to send the information. In the disclosed embodiment, the user will not be able to utilize the software until the profile information is sent to the host. Therefore, the user may have to activate this at a later time in order to connect with the host.

If the user has selected the option to upload the profile information to the host, the program will flow to the function block **1416** to initiate the connect process and then to a decision block **1418** to determine if the connection has been made. If not, the program will flow along a "N" path to a time to decision block **1420** which will time to an error block **1422** or back to the input of the connect decision block **1418**. The program, once connected, will then flow along a "Y" path from decision block **1418** to a function block **1428** to send the profile information with the ID of the computer or user to the host. The ID is basically, as described hereinabove, a "cookie" in the computer which is accessed by the program when transmitting to the host. The program will then flow to a function block **1430** to activate the program such that it, at later time, can operate without requiring all of the set up information. In general, all of the operation of this flowchart is performed with a "wizard" which steps the user through the setup process. Once complete, the program will flow to a Done block **1432**.

Referring now to FIG. **15**, there is illustrated a flowchart depicting the operation of the host when receiving a transaction. The program is initiated at a start block **1502** and then proceeds to decision block **1504**, wherein it is determined whether the system has received a routing request, i.e., the routing information **904** in the form of a tone, etc., embedded in the audio signal as described hereinabove with respect to FIG. **9**. The program will loop back around to the input of decision block **1504** until the routing request has been received. At this time, the program will flow along the "Y" path to a function block **1506** to receive the primary routing information and the user ID. Essentially, this primary routing information is extracted from the audio tone, in addition to the user ID. The program then flows to a function block **1508** to look up the manufacturer URL that corresponds to the received primary routing information and then return the necessary command information to the originating PC **108** in order to allow that PC to connect to the destination associated with the primary routing information. Thereafter, the program will flow to a function block **1510** to update the transaction database **1310** for the current transaction. In general, the routing information **904** will be stored as a single field with the associated IDs. The profile database, as described hereinabove, has associated therewith detailed profiles of each user on the system that has activated their software in association with their ID. Since the ID was sent in association with the routing information, what is stored in the transaction database is the routing code, in association with all of the IDs transmitted to the system in association with that particular routing code. Once this transaction database has been updated, as described hereinabove, the transactions can be transferred back to the subscriber at node **312** with the detailed profile information from the profile database **1308**.

The profile information can be transmitted back to the subscriber or manufacturer in the node **312** in realtime or non-realtime. A decision block **1512** is provided for this, which determines if the delivery is realtime. If realtime, the program will flow along a "Y" path to a function block **1514** wherein the information will be immediately forwarded to the manufacturer or subscriber. The program will then flow to a function block **1516** wherein the billing for that particular manufacturer or subscriber will be updated in the billing database **1316**. The program will then flow into an End block **1518**. If it was non-realtime, the program moves along the "N" path to a function block **1520** wherein it is set for a later delivery and it is accrued in the transaction database. In any event, the transaction database will accrue all information associated with a particular routing code.

With a realtime transaction, it is possible for a manufacturer to place an ad in a magazine or to place a product on a shelf at a particular time. The manufacturer can thereafter monitor the times when either the ads are or the products are purchased. Of course, they must be scanned into a computer which will provide some delay. However, the manufacturer can gain a very current view of how a product is moving. For example, if a cola manufacturer were to provide a promotional advertisement on, for example, television, indicating that a new cola was going to be placed on the shelf and that the first 1000 purchasers, for example, scanning their code into the network would receive some benefit, such as a chance to win a trip to some famous resort in Florida or some other incentive, the manufacturer would have a very good idea as to how well the advertisement was received. Further, the advertiser would know where the receptive markets were. If this advertiser, for example, had placed the television advertisement in ten cities and received overwhelming response from one city, but very poor response from another city, he would then have some inclination to believe that either one poor response city was not a good market or that the advertising medium he had chosen was very poor. Since the advertiser can obtain a relatively instant response and also content with that response as to the demographics of the responder, very important information can be obtained in a relatively short time.

It should be noted that the disclosed embodiment is not limited to a single source PC **302**, but may encompass a large number of source computers connected over a global communication network. Additionally, the embodiment is not limited to a single ARS **308** or a single advertiser server **312**, but may include a plurality of ARS and advertiser systems, indicated by the addition of ARS **314** and advertiser server **A 316**, respectively. It should also be noted that this embodiment is not limited only to global communication networks, but also may be used with LAN, WAN, and peer-to-peer configurations.

It should also be noted that the disclosed embodiment is not limited to a personal computer, but is also applicable to, for example, a Network Computer ("NetPC"), a scaled-down version of the PC, or any system which accommodates user interaction and interfaces to information resources.

One typical application of the above noted technique is for providing a triggering event during a program, such as a sport event. In a first example, this may be generated by an advertiser. One could imagine that, due to the cost of advertisements in a high profile sports program, there is a desire to utilize this time widely. If, for example, an advertiser contracted for 15 seconds worth of advertising time, they could insert within their program a tone containing the routing information. This routing information can then be output to the user's PC which will cause the user's PC to, via

the network, obtain information from a remote location typically controlled by the advertiser. This could be in the form of an advertisement of a length longer than that contracted for. Further, this could be an interactive type of advertisement. An important aspect to the type of interaction between the actual broadcast program with the embedded routing information and the manufacturer's site is the fact that there is provided in the information as to the user's PC and a profile of the user themselves. Therefore, an advertiser can actually gain realtime information as to the number of individuals that are watching their particular advertisement and also information as to the background of those individuals, demographic information, etc. This can be a very valuable asset to an advertiser.

In another example, the producer of the program, whether it be an on-air program, a program embedded in a video tape, CD-ROM, DVD, or a cassette, can allow the user to automatically access additional information that is not displayed on the screen. For example, in a sporting event, various statistics can be provided to the user from a remote location, merely by the viewer watching the program. When these statistics are provided, the advertiser can be provided with demographic information and background information regarding the user. This can be important when, for example, the user may record a sports program. If the manufacturer sees that this program routing code is being output from some device at a later time than the actual broadcast itself, this allows the advertisers to actually see that their program is still being used and also what type of individual is using it. Alternatively, the broadcaster could determine the same and actually bill the advertiser an additional sum for a later broadcast. This is all due to the fact that the routing information automatically, through a PC and a network, will provide an indication to the advertiser for other intermediary regarding the time at which the actual information was broadcast.

The different type of medium that can be utilized with the above embodiment are such things as advertisements, which are discussed hereinabove, contests, games, news programs, education, coupon promotional programs, demonstration media (demos), photographs, all of which can be broadcast on a private site or a public site. This all will provide the ability to allow realtime interface with the network and the remote location for obtaining the routed information and also allow for realtime billing and accounting.

Although the preferred embodiment has been described in detail, it should be understood that various changes, substitutions and alterations can be made therein without departing from the spirit and scope of the invention as defined by the appended claims.

What is claimed is:

1. A method for controlling a computer disposed at a user location on a network, comprising the steps of:

inputting an analog signal at the user location on the network, the analog signal comprising a commerce identifier, which commerce identifier has an association with information disposed on a remote information provider location on the network;

in response to the step of inputting;

appending routing information to the commerce identifier, which routing information defines the location of the remote information provider location on the network;

creating a link between the user location and the remote information provider location over the network in accordance with the appended routing information,

15

which routing information defines the network connection between the user location and the remote location on the network; and
 transmitting the commerce identifier from the user location to the remote information provider location over the network utilizing the created link, wherein the information associated with the commerce identifier can be returned to the user location from the remote information provider location.

2. The method of claim 1, wherein the analog signal is input to a sound card on the computer.

3. The method of claim 1, wherein the step of appending routing information comprises the steps of:
 providing a database of routing information at a secondary location on the network which provides an association between a predetermined commerce identifier and a predefined remote information provider location on the network, there being a plurality of such routing information stored in the database;
 transmitting to the secondary location on the network the commerce identifier;
 accessing the database in response to receiving at the secondary location a transmitted commerce identifier from the user location;
 comparing the received commerce identifier with the stored routing information in the database;
 if there is a match between the received commerce identifier and any of the stored routing information, transmitting the matching routing information back to the user location; and
 at the user location, in response to receiving the matching routing information, appending the matching routing information to the commerce identifier.

4. The method of claim 3, and further comprising the step of displaying the received information from the remote information provider location.

5. The method of claim 1, wherein the network is a global communication network that provides a universal resource locator (URL) for each remote information provider location on the network and the routing information is comprised of the URL for the remote information provider location.

6. The method of claim 1, wherein the appended routing information in the step of appending includes instructional information as to how the remote information provider location is to process the transmitted commerce identifier.

7. A method for retrieving information from a storage region having a defined information provider location on a network, comprising the steps of:
 broadcasting a program having embedded therein an encoded signal having unique identifier information contained therein, wherein the unique identifier has an association with the location on the network of the storage region;
 extracting the encoded signal from the broadcast; and
 controlling a personal computer for a user at a user location on the network in response to the step of extracting to connect to the storage region on the network and retrieve information from the storage region at the defined location thereof on the network, which defined location is located with the extracted

16

encoded signal, and providing it at the personal computer for use by the user.

8. The method of claim 7, wherein the personal computer has a display associated therewith, wherein the retrieved information is displayed on the display.

9. The method of claim 7, wherein the broadcast program is a video program.

10. The method of claim 7, wherein the broadcast program is an audio program.

11. The method of claim 7, wherein the encoded signal comprises an audio signal and wherein the step of extracting comprises decoding the unique identifier information in the audio signal by the personal computer.

12. The method of claim 11, wherein the broadcast program is a video program.

13. The method of claim 11, wherein the broadcast program is an audio program.

14. The method of claim 11, wherein the step of extracting routing information comprises connecting the video source to the personal computer with a cable which carries at least audio information, the personal computer then decoding from the audio information in the step of extracting the unique identifier information from the encoded signal.

15. The method of claim 7, wherein the encoded signal is a video signal and the broadcast program is a video program and the step of extracting comprises extracting the unique identifier information from the video encoded signal.

16. The method of claim 7, wherein the storage region is disposed on a remote information provider location on the network, and the step of controlling comprises:
 transferring the extracted unique identifier information to an intermediate node on the network;
 storing at the intermediate node on the network lookup information associated with the location of the storage region on the network with the unique identifier information, such that the unique identifier information is associated with the location of the storage region on the network;
 looking up at the intermediate node the associated location of the storage region for the received unique identifier information and returning the location information to the personal computer; and
 the step of controlling using the returned location information to retrieve information from the storage region at the defined remote information provider location on the network.

17. The method of claim 16 and further comprising the step of storing at the intermediate node profile information associated with the user of the personal computer and storing at the personal computer identification information associated with the profile information at the intermediate node and further comprising the step of transmitting the identification information to the intermediate node when transmitting the unique identifier information thereto.

18. The method of claim 17, and further comprising the step of transmitting profile information from the intermediate node to the personal computer with the returned routing information, such that profile information is transmitted with the unique identifier information from the personal computer to the defined location on the network.

* * * * *